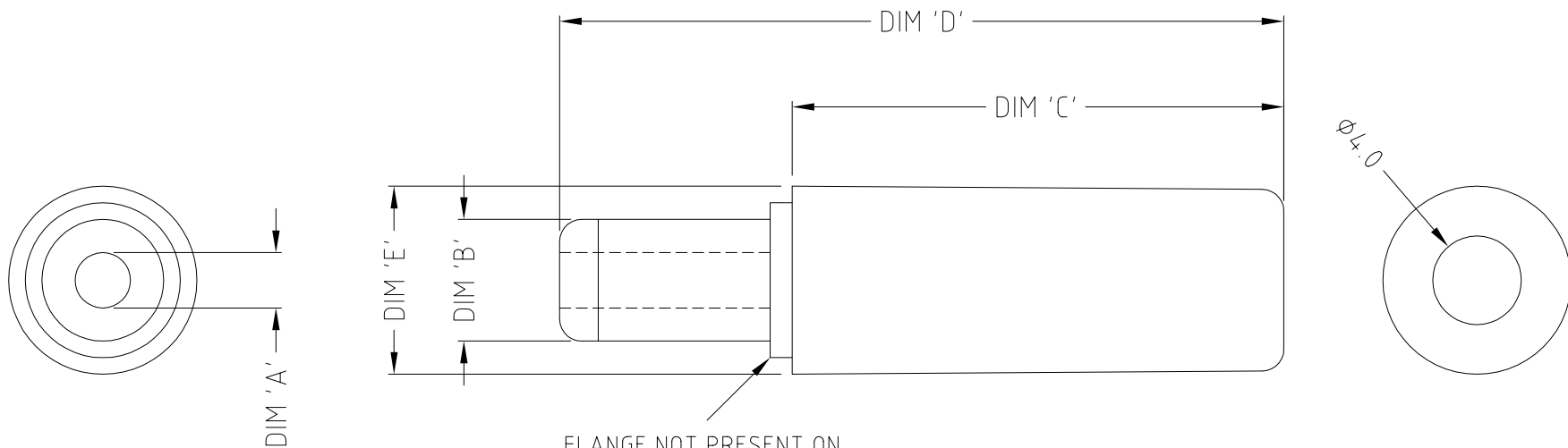
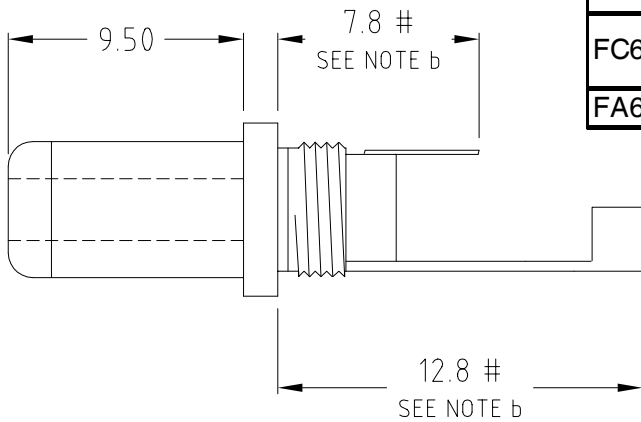
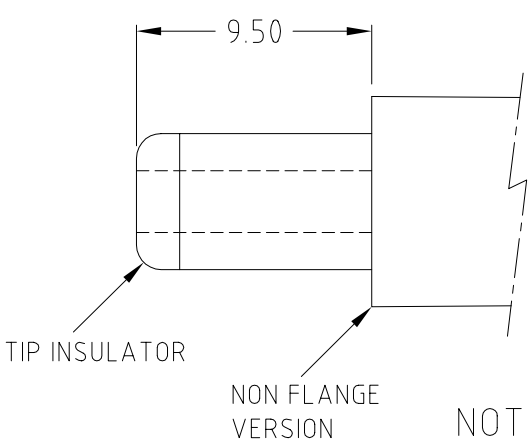


ISS.	AMEND	DATE
1	1st DRAWN	27/07/90
2	NOTE *	02/05/91
3	C MODELS ADD	01/02/94
4	F ADD, C MOD DEL	25/04/96
5	DIM D AMEND	06/02/07
6	DCPP3 B DIM ERROR	19/02/07
7	UPDATE TABLE+VIEWS	04/09/13



FLANGE NOT PRESENT ON ALL MODELS. SEE TABLE

PART No.	MODEL	DIM A	DIM B	DIM C	DIM D	DIM E	FLANGE
FC68147	DCPP1	$\phi 2.1$	$\phi 5.5$	22.2	32.7	$\phi 8.7$	YES
				20.0	29.5	$\phi 8.3$	NO
FC681471	DCPP2	$\phi 2.5$	$\phi 5.5$	22.2	32.7	$\phi 8.7$	YES
				20.0	29.5	$\phi 8.3$	NO
FA67555	DCPP3	$\phi 1.3$	$\phi 3.5$	21.8	32.3	$\phi 7.8$	YES



- NOTES:
- a) NOMINAL RATING FOR ALL: 12V 5A (60VA)
  - b) # DIMENSIONS MAY VARY.
  - c) DCPP1 + DCPP2 WITH OR WITHOUT FLANGE, SEE TABLE.

**RoHS COMPLIANT**

TOLERANCE

- NO DEC. PLACE  $\pm 0.50$
- 1 DEC. PLACE  $\pm 0.25$
- 2 DEC. PLACE  $\pm 0.10$
- HOLE  $\phi \pm 0.10$
- ANGLES  $\pm 1/2^\circ$
- UNLESS OTHERWISE STATED