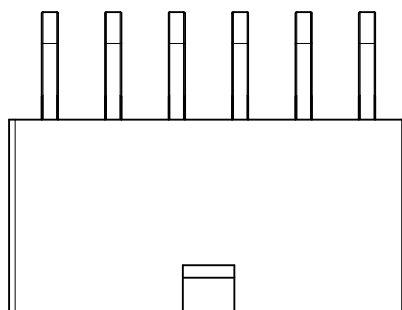


NATURAL HEADERS						
PART NUMBER	ENG NUMBER	CKT. SIZE	PLATING	DIM "A"	DIM "B"	PACKAGING
30070-1232		12	GOLD	1.039	.827	BULK
30070-1235			TIN	(26.40)	(21.00)	
30070-1032		10	GOLD	.874	.661	
30070-1035			TIN	(22.20)	(16.80)	
30070-0832		8	GOLD	.709	.496	
30070-0835			TIN	(18.00)	(12.60)	
30070-0632		6	GOLD	.543	.331	
30070-0635			TIN	(13.80)	(8.40)	
30070-0432		4	GOLD	.378	.165	
30070-0435			TIN	(9.60)	(4.20)	
30070-0232		2	GOLD	.213		
30070-0235			TIN	(5.40)		

BLACK HEADERS						
PART NUMBER	ENG NUMBER	CKT. SIZE	PLATING	DIM "A"	DIM "B"	PACKAGING
30070-1212		12	GOLD	1.039	.827	BULK
30070-1215			TIN	(26.40)	(21.00)	
30070-1012		10	GOLD	.874	.661	
30070-1015			TIN	(22.20)	(16.80)	
30070-0812		8	GOLD	.709	.496	
30070-0815			TIN	(18.00)	(12.60)	
30070-0612		6	GOLD	.543	.331	
30070-0615			TIN	(13.80)	(8.40)	
15-97-8048	30070-04B1	4	GOLD	.378	.165	
15-97-8043	30070-04B3		TIN	(9.60)	(4.20)	
15-97-8028	30070-02B1	2	GOLD	.213		
15-97-8023	30070-02B3		TIN	(5.40)		



FINISHED PART LEGEND

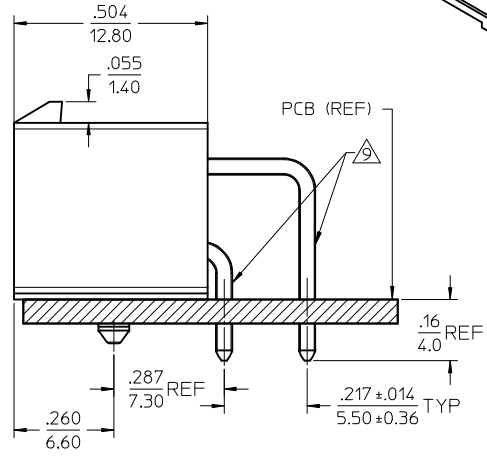
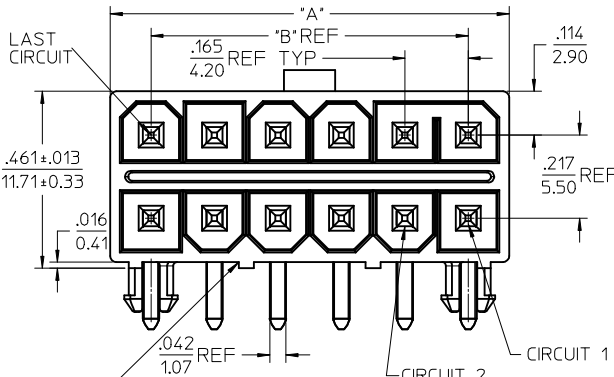
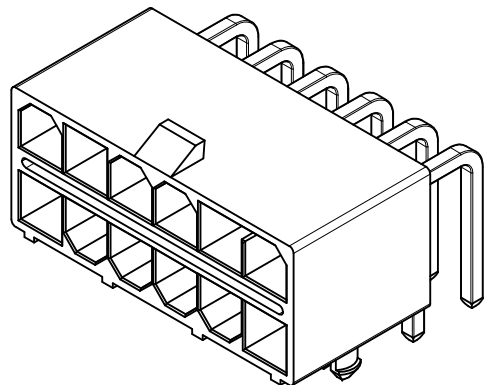
30070 - * * * * *

BASE NUMBER

CIRCUIT SIZE

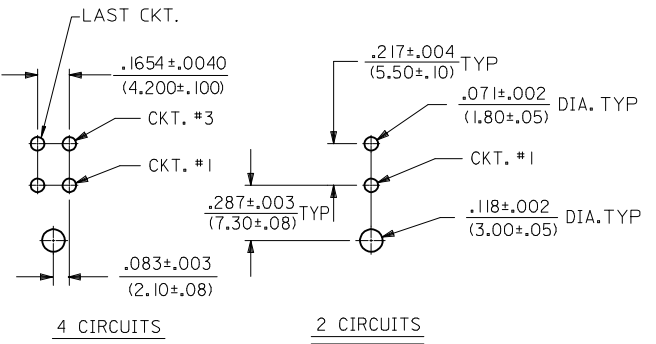
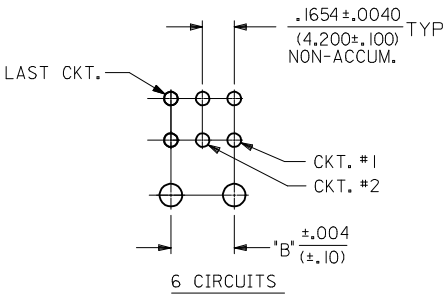
PCB MOUNTING & COLOR
 B OR *1* = PEG, COLOR = BLACK
 A = FLANGE (SEE SHEET 2)
 3 = PEG, COLOR = NATURAL

PLATING
 (SEE NOTE 2)



SHOWN WITH OPTIONAL CENTER RIBS
 MAY OR MAY NOT BE PRESENT
 DEPENDING ON CIRCUIT SIZE

**OPTION 1 AND 3
 PEG MOUNT**
 SEE SHEET 2 FOR FLANGE MOUNT



NOTE:
 DIMENSIONS SHOWN IN THIS
 VIEW ARE TYPICAL FOR ALL
 P.C.B. CONFIGURATIONS FROM
 6-16 CIRCUITS.

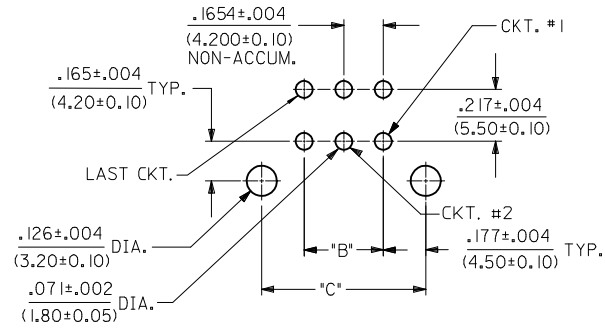
RECOMMENDED HOLE LAYOUT FOR .070/(1.78) MAX. P.C.BOARD
 VIEWED FROM COMPONENT SIDE OF BOARD

- NOTES:
- MATERIAL:
 HOUSING: POLYESTER, UNFILLED, UL94 V-0,
 COLOR: SEE CHART
 TERMINALS: BRASS
 - TERMINAL PLATING:
 3 OR 5-.000100/(0.00254) MIN. MATTE TIN OVER
 .000050/(0.00127) MIN. NICKEL
 1 OR 2-.000030/(0.00076) MIN. SELECT GOLD AND
 .000100/(0.00254) MIN. SELECT MATTE TIN OVER
 .000050/(0.00127) MIN. NICKEL OVERALL
 - PRODUCT SPECIFICATION: PS-5556-003
 - PACKAGING: SEE CHARTS: BULK PER PK-30070-001
 TRAY PER PK-44483-001
 - PART MATES WITH MINI-FIT JR. TPA RECEPTACLE 30067.
 - PARTS ARE NOT TO BE MATED OR UNMATED WHILE
 CIRCUITS ARE LIVE.
 - DISCOLORATION ON THE BANDOLIER CARRIER AREA OF
 THE PIN IS INHERENT TO THE PLATING PROCESS
 AND IS DUE TO THE MASKING EFFECT OF THE CARRIER.
 THIS DISCOLORATION IS IN A NON-FUNCTIONAL AREA
 OF THE PIN AND WILL NOT AFFECT THE PREFORMRANCE
 OF THE HEADER ASSEMBLY.
 - PARTS CONFORM TO CLASS "B" REQUIREMENTS OF
 COSMETIC SPECIFICATION PS-45499-002.
 - FORMING MARKS ARE ACCEPTABLE.
 - PARTS ARE NOT DESIGNED FOR CURRENT SHARING.

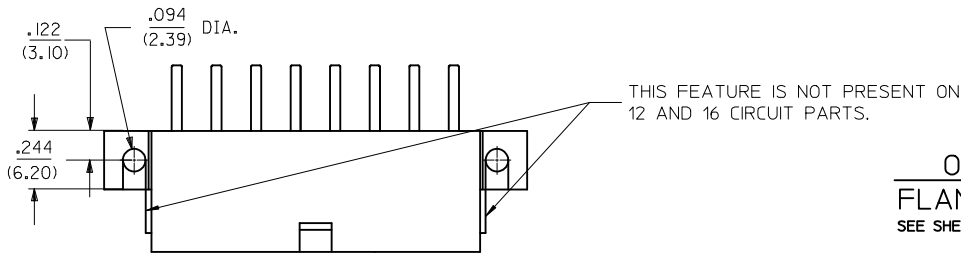
CHG 10CKT PACKAGING EC NO: UCP2014-3091 DRWINANGUYEN 2014/01/28 CHKD:JBELL 2014/01/28 APPR:FSMITH 2014/02/14 REV: D4	QUALITY SYMBOLS ▽=0 ▽=0 ▽=0	GENERAL TOLERANCES (UNLESS SPECIFIED)		DIMENSION STYLE IN/MM		SCALE 4:1	DESIGN UNITS METRIC	THIRD ANGLE PROJECTION	
		mm	INCH	DRAWN BY	DATE	MINI-FIT TPA RIGHT ANGLE HEADER ASSY molex DOCUMENT NO. SD-30070-001 SHEET NO. 1 OF 2			
		4 PLACES ± ---	± ---	TGREGORI	2006/03/28				
		3 PLACES ± ---	± .010	CHECKED BY	DATE				
2 PLACES ± 0.25	± .014	JCOMERCI	2006/03/28						
1 PLACE ± 0.36	± ---	APPROVED BY	DATE	THIS DRAWING CONTAINS INFORMATION THAT IS PROPRIETARY TO MOLEX INCORPORATED AND SHOULD NOT BE USED WITHOUT WRITTEN PERMISSION					
0 PLACE ±	±	FSMITH	2010/04/09						
ANGULAR ±1/2°		MATERIAL NO.							
DRAFT WHERE APPLICABLE MUST REMAIN WITHIN DIMENSIONS		SEE CHART							

BLACK FLANGE MOUNT HEADERS

CKT. SIZE	PART NUMBER	ENG NUMBER	PLATING	DIM "A"	DIM "B"	DIM "C"	DIM "D"	PACKAGING	
2	15-97-8022	30070-02A3	TIN	.213	---	.354	.606	BULK	
	15-97-8027	30070-02A1	GOLD	(5.40)	---	(9.00)	(15.40)		
4	15-97-8042	30070-04A3	TIN	.378	.165	.520	.772		
	15-97-8047	30070-04A1	GOLD	(9.60)	(4.20)	(13.20)	(19.60)		
6	15-97-8062	30070-06A3	TIN	.543	.331	.685	.937		
	15-97-8067	30070-06A1	GOLD	(13.80)	(8.40)	(17.40)	(23.80)		
8	15-97-8082	30070-08A3	TIN	.709	.496	.850	1.102		
	15-97-8087	30070-08A1	GOLD	(18.00)	(12.60)	(21.60)	(28.00)		
10	15-97-8102	30070-10A3	TIN	.874	.661	1.016	1.268		TRAY
	15-97-8107	30070-10A1	GOLD	(22.20)	(16.80)	(25.80)	(32.20)		
12	15-97-8122	30070-12A3	TIN	1.039	.827	1.181	1.433		
	15-97-8127	30070-12A1	GOLD	(26.40)	(21.00)	(30.00)	(36.40)		
16	15-97-8162	30070-16A3	TIN	1.370	1.157	1.512	1.764		
	15-97-8167	30070-16A1	GOLD	(34.80)	(29.40)	(38.40)	(44.80)		



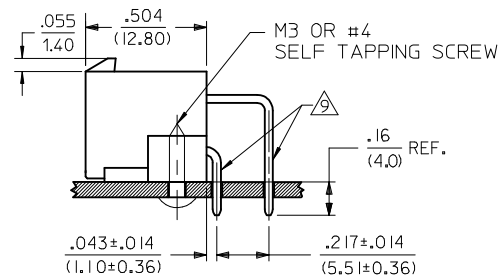
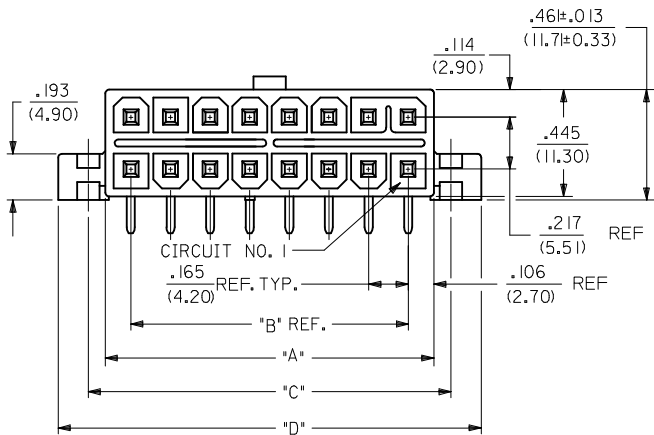
RECOMMENDED HOLE LAYOUT FOR .070/(1.78) MAX. P.C. BOARD
VIEWED FROM COMPONENT SIDE OF BOARD



OPTION 2 FLANGE MOUNT SEE SHEET 1 FOR PEG MOUNT

FINISHED PART LEGEND

30070 - * * * *
 BASE NUMBER _____
 CIRCUIT SIZE _____
 PCB MOUNTING & COLOR _____
 B OR *1* = PEG (SEE SHEET 1)
 A = FLANGE COLOR = BLACK
 3 = PEG (SEE SHEET 1)
 PLATING (SEE NOTE 2)



REV	DESCRIPTION	QUALITY SYMBOLS	GENERAL TOLERANCES (UNLESS SPECIFIED)		DIMENSION STYLE		SCALE	DESIGN UNITS	THIRD ANGLE PROJECTION
			mm	INCH	IN/MM				
D4	SEE SHEET 1 EC NO: UCP2014-3091 DRWING: NGUYEN CHKD: J. BELL APPR: FSMITH	▽=0 ▽=0 ▽=0	4 PLACES ± ---	± ---	DRAWN BY	DATE	4:1	METRIC	MINI-FIT TPA RIGHT ANGLE HEADER ASSY
			3 PLACES ± ---	± .010	TGREGORI	2006/03/28			molex
			2 PLACES ± 0.25	± .014	CHECKED BY	DATE			
			1 PLACE ± 0.36	± ---	JCOMERCI	2006/03/28			SD-30070-001
			0 PLACE ±	±	APPROVED BY	DATE			2 OF 2
					FSMITH	2010/04/09			
					MATERIAL NO.	DOCUMENT NO.			
					SEE CHART				
					THIS DRAWING CONTAINS INFORMATION THAT IS PROPRIETARY TO MOLEX INCORPORATED AND SHOULD NOT BE USED WITHOUT WRITTEN PERMISSION				