

## MECHANICAL DETAILS

**Shell Style Model** PX\* : Elbow receptacle key (G) or keys (A, B, C) with two nuts for printed circuit

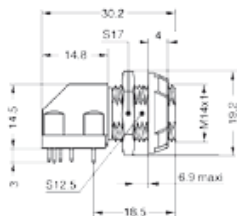
**Keying** 1 key (alpha=0; Plug: male contact; Receptacle: female contact)

**Housing Material** PSU (Polysulfone), gray

**Cable Fixing** 0 - 0 mm

**Variant 2** G : Gray front nut

	A	E	L	S1	S2	e
Mm.	19.2	6.9 max	30.2	S12.5	S17	M14x1
In.	0.76	0.27	1.19			



## PERFORMANCE DETAIL

**Insert** 1P.M05 : 5 Low Voltage

**Insulator**

**Specifications**

**Contact Type:** Print (straight)

**Max. Matings:** 2000

**Contact Dia.:** 0.9 mm (0.0354in)

**R (max):** 4.5 mOhm



## OTHER CHARACTERISTICS

**Shell Style/Model** Libellé

**F ret (min):** 50 N

**F ret (max):** 150 N







**IP Rating** 50



## Available Download

 [P\\_series\\_catalog.pdf](#)

## Related links

-  [Contact](#)
-  [Quote Request](#)
-  [Catalogs Downloads](#)
-  [Catalogs Requests](#)
-  [Sample Request](#)
-  [3D drawings](#)