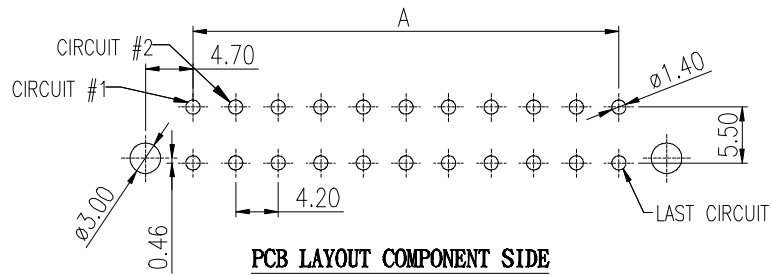
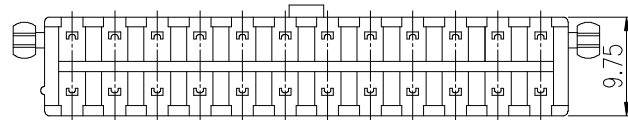
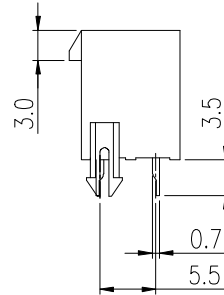
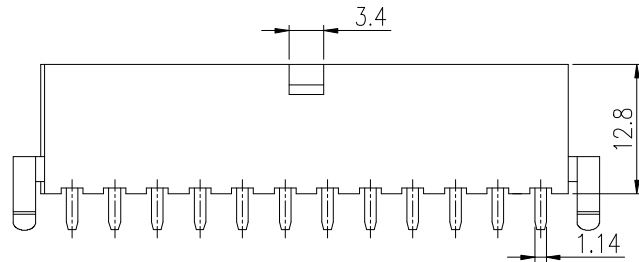
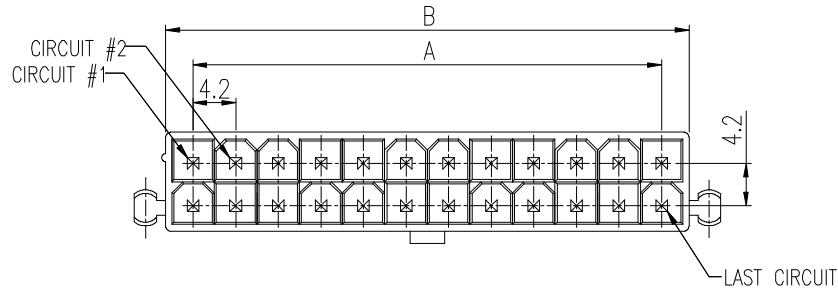


PRODUCT NUMBER  
SEE PART NO. TABLE



**PCB LAYOUT COMPONENT SIDE**

NOTES:

- MATERIAL:  
HSG: OPTIONAL PA66. UL94V-0.  
COLOR: NATURAL.  
TERMINAL: BRASS.  
PLATING: OPTIONAL ON CONTACT AREA.
- THIS PLUG MATES WITH FCI RECEPTACLE WIRE CONNECTOR 10127815.
- PRODUCT SPECIFICATION: GS-12-1181.
- PACKAGE SPECIFICATION: GS-14-2362.
- THE HOUSING WILL WITHSTAND EXPOSURE TO 235°C PEAK TEMPERATURE FOR 5 SECONDS IN A WAVE SOLDER APPLICATION WITH A 1.6mm MINIMUM THICK CIRCUIT BOARD.
- PART NUMBER SCHEME:  
10127820- XX X X X X LF

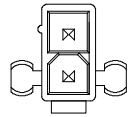
POS. CODE: \_\_\_\_\_ PEG:  
02: 2 POS. BLANK: NO PEG  
04: 4 POS. P: 2 PEGS  
24: 24 POS. GLOW WIRE COMPATIBLE:  
BLANK: NON COMPATIBLE  
G: COMPATIBLE  
PLATING CODE:  
1: GOLD FLASH  
2: TIN

7. DIMENSIONAL & PART NO. TABLE:

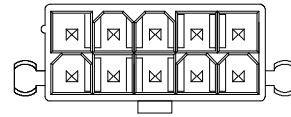
PART NUMBER	POS.	A	B
10127820-02XXXXLF	02	/	5.4
10127820-04XXXXLF	04	4.2	9.6
10127820-06XXXXLF	06	8.4	13.8
10127820-08XXXXLF	08	12.6	18.0
10127820-10XXXXLF	10	16.8	22.2
10127820-12XXXXLF	12	21.0	26.4
10127820-14XXXXLF	14	25.2	30.6
10127820-16XXXXLF	16	29.4	34.8
10127820-18XXXXLF	18	33.6	39.0
10127820-20XXXXLF	20	37.8	43.2
10127820-22XXXXLF	22	42.0	47.4
10127820-24XXXXLF	24	46.2	51.6

mat'l. code		surface		tolerance		projection		product family	
						MM		Minitek Pwr4.2	
ltr		ecn no		dr		date		title	
A				TAI		2013-11-11		MINITEK PWR4.2, WT B HEADER, DUAL ROW, VERTICAL, DIP TYPE	
B		ELX-T-16592		TAI		2013-12-27			
C		ELX-T-17193		TAI		2014-03-12			
D		ELX-T-17526		TAI		2014-04-17			
E		ELX-T-17590		TAI		2014-04-29			
F		ELX-T-19251		TAI		2014-10-31			
								scale	
				dr		KENNY TAI		2013-11-11	
				enr		KENNY TAI		2013-11-11	
				chr		KENNY TAI		2013-11-11	
				appd		PM ZHENG		2013-11-22	
sheet index		revision sheet		F 1		F 2		type	
								CUSTOMER Drawing	
								dwg no	
								10127820	
								sheet 1 of 2	
								size	
								A4	

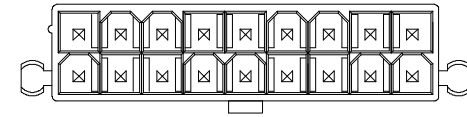




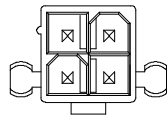
2 POS



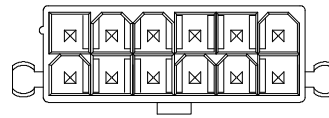
10 POS



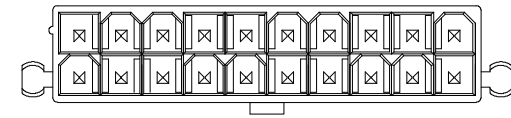
18 POS



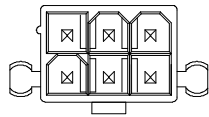
4 POS



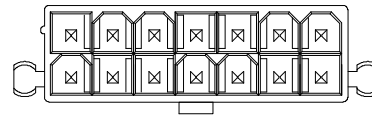
12 POS



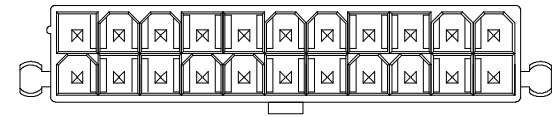
20 POS



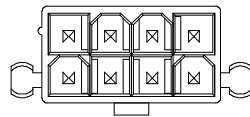
6 POS



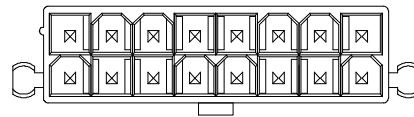
14 POS



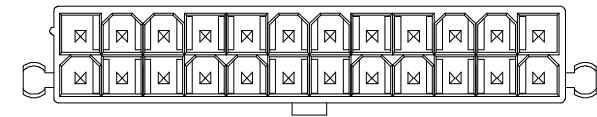
22 POS



8 POS



16 POS



24 POS

mat'l. code		surface <input checked="" type="checkbox"/>		tolerance		projection		product family Minitek Pwr4.2	
ltr		ecn no		dr		date		title	
								MINITEK PWR4.2, WTB HEADER, DUAL ROW, VERTICAL, DIP TYPE	
		angles		X.X ±0.4		MM		scale	
				X.XX ±0.3					
				X*±1*					
		dr		KENNY TAI		2013-11-11		sheet 2 of 2	
		enr		KENNY TAI		2013-11-11		size	
		chr		KENNY TAI		2013-11-11		A4	
		appd		PM ZHENG		2013-11-22		type	
								CUSTOMER Drawing	
sheet index		revision sheet		F 1		F 2			

