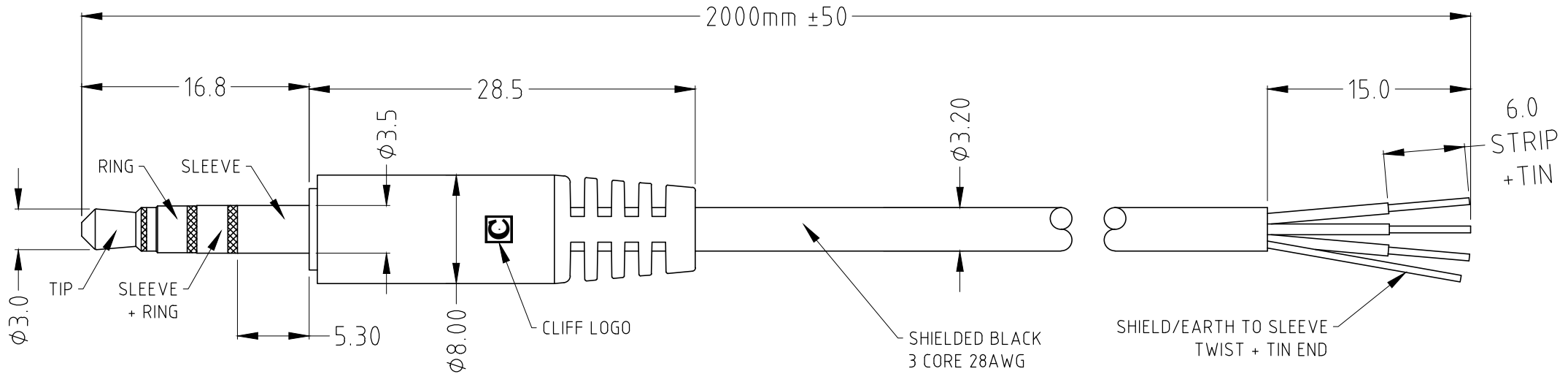
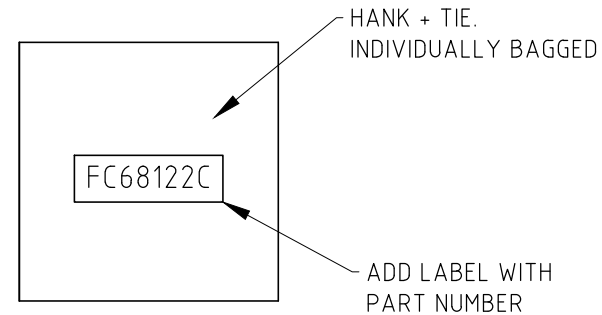
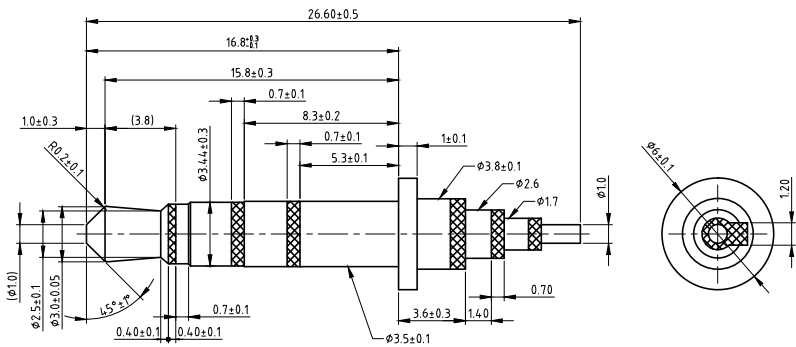


ISS.	AMEND	DATE
1	ISSUED	02/10/14

TIP - RED  
 RING - WHITE  
 SLEEVE+RING - BLACK  
 SLEEVE - SHIELD/EARTH



OVERMOULD FC68122C PLUG OR APPROVED EQUIVALENT.



**RoHS COMPLIANT**

**TOLERANCE**  
 NO DEC. PLACE ± 0.50  
 1 DEC. PLACE ± 0.30  
 2 DEC. PLACE ± 0.15  
 HOLE Ø ± 0.10  
 ANGLES ± 3°  
 UNLESS OTHERWISE STATED

DO NOT SCALE

**Cliff Electronic Components Ltd.**  
 76 Holmethorpe Avenue, Holmethorpe Industrial Estate,  
 Redhill, Surrey, RH1 2PF, England, UK  
 Tel: 01737-771375 Fax: 01737-766012 Website: www.cliffuk.co.uk

DIMENSIONS IN MILLIMETERS UNLESS OTHERWISE STATED. WORK TO DIMENSIONS. REMOVE ALL BURRS. IF IN DOUBT ASK.

3rd ANGLE PROJECTION:

MATERIAL: COMPOSITE

FINISH: CLEAN - SEE TABLE

DRAWN: T.J.O.

APPROVED: D.P.J.

TITLE: Ø3.5mm 4 POLE OVERMOULD LEAD 2m

DRWG. No. **FC68122C**

FORM: A4DRWGH

THE CONTENTS OF THIS DOCUMENT MUST NOT BE COPIED OR DISCLOSED TO A 3rd PARTY WITHOUT WRITTEN PERMISSION OF CLIFF UK. © 2014