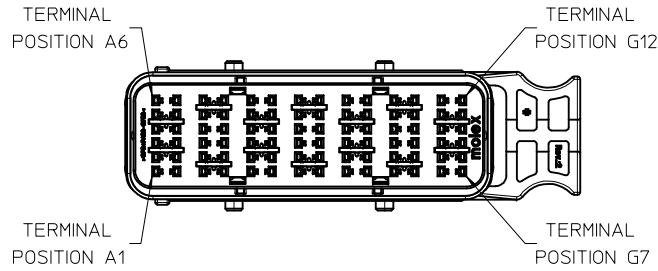
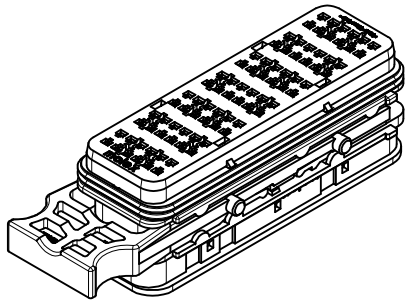
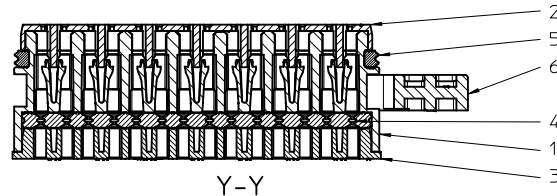


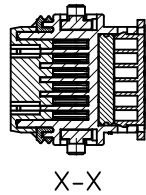
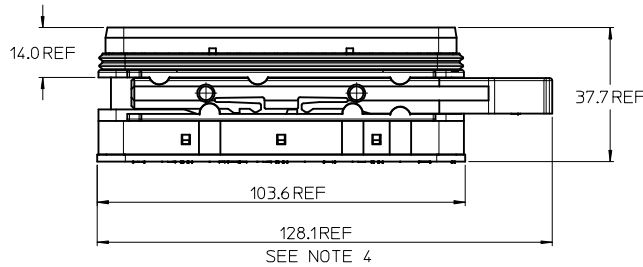
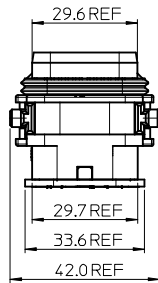
TPA IN FULL-LOCK (AS SHIPPED) POSITION AND LATCH IN PARTIALLY OPEN POSITION



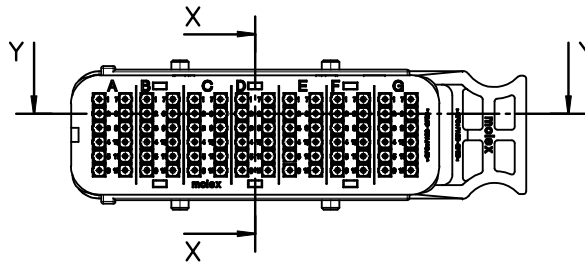
TERMINAL POSITION A1  
TERMINAL POSITION A6  
TERMINAL POSITION G7  
TERMINAL POSITION G12



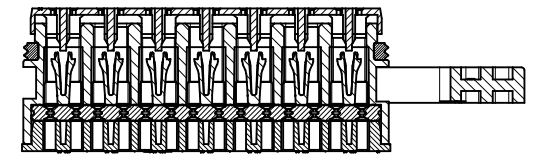
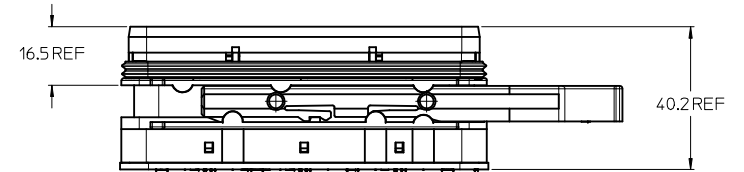
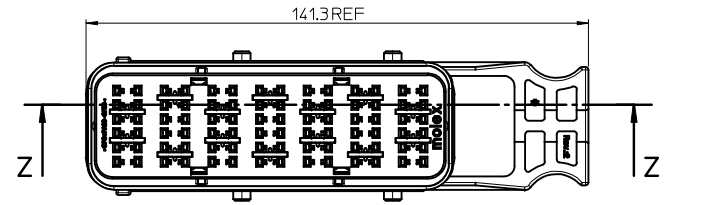
Y-Y



X-X



TPA IN PRELOAD POSITION AND LATCH IN OPEN POSITION



Z-Z

NOTES:

1. MATERIALS: HOUSINGS: POLYSTYRENE/NYLON BLEND, GLASS FILLED, UL 94 HB  
SEALS: SILICONE RUBBER
2. MX150 RECEPTACLE TERMINAL PER SD-33012-002 TO BE USED WITH THIS ASSEMBLY  
CRIMPED WITH CABLE INSULATION OUTER DIAMETER IN THE RANGE 1.5mm TO 2.7mm
3. PRODUCT SPECIFICATION: PS-85070-001
4. PACKAGING SPECIFICATION: PK-85070-001; LATCH SHIPPED IN PARTIALLY OPEN POSITION
5. MATES WITH: SRC2 84 PIN BLADE HOUSING ASSEMBLY  
PART NUMBER 932880001 PER SD-93288-001
6. APPLICATION SPECIFICATION: AS-85070-001
7. CONDUIT INTERFACE OPTIONS: REFER TO SD-93286-001

No.	DESCRIPTION	QTY.	COLOUR
6	SLIDING LATCH	1	BLACK
5	FEMALE FRONT SEAL	1	RED
4	FEMALE BACK SEAL	1	LIGHT BLUE
3	FEMALE REAR COVER	1	BLACK
2	FEMALE FRONT COVER	1	GREEN
1	FEMALE HOUSING	1	BLACK
BILL OF MATERIAL			

**CORRECT LATCH DESIGN**  
EC NO: IP02015-0461  
DRWN: JWALLACE 2014/09/11  
CHKD:  
APPR: JWALLACE 2014/09/12

QUALITY SYMBOLS  
▽=0  
▽=0

GENERAL TOLERANCES (UNLESS SPECIFIED)

	mm	INCH
4 PLACES	± ---	± ---
3 PLACES	± ---	± ---
2 PLACES	± 0.20	± ---
1 PLACE	± 0.5	± ---
ANGULAR ± ---°		

DRAFT WHERE APPLICABLE  
MUST REMAIN  
WITHIN DIMENSIONS

DIMENSION STYLE  
**MM ONLY**

SCALE  
**1:1**

DESIGN UNITS  
**METRIC**

THIRD ANGLE PROJECTION

DRAWN BY  
JOCANNOR

CHECKED BY  
JDWALLACE

APPROVED BY  
EFOLAN

DATE  
2010/07/29

DATE  
2010/08/26

DATE  
2011/02/11

MATERIAL NO.  
**932870001**

DOCUMENT NO.  
**SD-93287-001**

**SRC2 FEMALE 84 PIN RECEPTACLE HOUSING ASSEMBLY**

**MOLEX INCORPORATED**

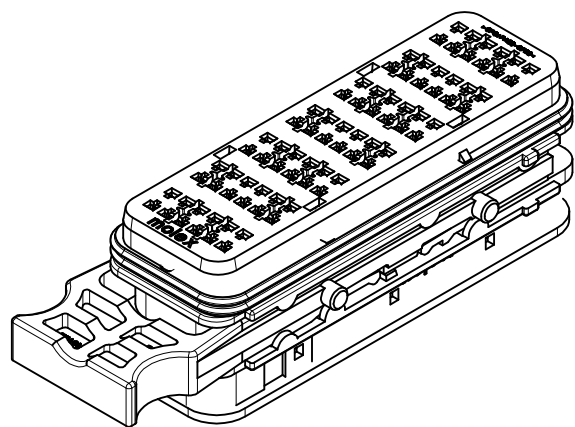
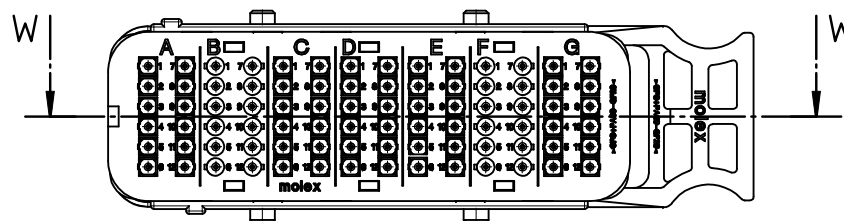
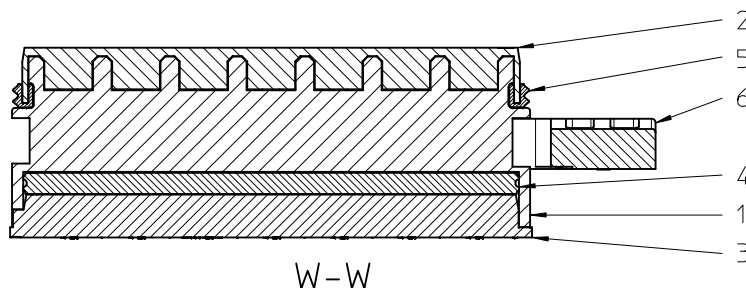
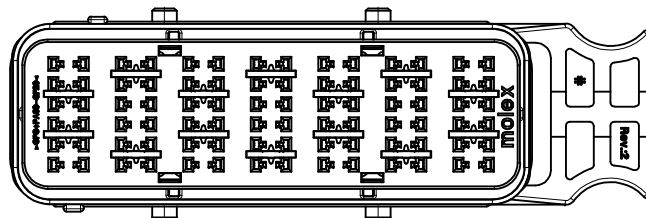
SHEET NO.  
**1 OF 2**

THIS DRAWING CONTAINS INFORMATION THAT IS PROPRIETARY TO MOLEX INCORPORATED AND SHOULD NOT BE USED WITHOUT WRITTEN PERMISSION

NOTES:

1. REFERENCE SHEET ONE FOR UNSPECIFIED NOTES AND DIMENSIONS
2. MX150 RECEPTACLE TERMINAL PER SD-33012-002 TO BE USED WITH THIS ASSEMBLY CRIMPED WITH CABLE INSULATION OUTER DIAMETER IN THE RANGE 1.5mm TO 2.7mm
3. MX150L RECEPTACLE TERMINALS PER SD-93643-001 MAY BE USED WITH THIS ASSEMBLY IN CAVITIES B AND F CRIMPED WITH 2.5mm<sup>2</sup> (13AWG) CABLE INSULATION OUTER DIAMETER IN THE RANGE 2.7mm TO 3.0mm
4. MATES WITH: SRC2 84 PIN 2.5 BLADE HOUSING ASSEMBLY PART NUMBER 932888425 PER SD-93288-001

6	SLIDING LATCH	1	BLACK
5	FEMALE FRONT SEAL	1	RED
4	FEMALE BACK SEAL	1	LIGHT BLUE
3	FEMALE REAR COVER	1	BLACK
2	FEMALE FRONT COVER	1	GREEN
1	FEMALE HOUSING	1	BLACK
No.	DESCRIPTION	QTY.	COLOUR
BILL OF MATERIAL			



SEE SHEET ONE EC NO: IPG2015-0461 DRWN: JWALLACE 2014/09/11 CHKD: APPR: JWALLACE 2014/09/12	QUALITY SYMBOLS ▽=0 ◻=0	GENERAL TOLERANCES (UNLESS SPECIFIED)		DIMENSION STYLE MM ONLY		SCALE 1:1	DESIGN UNITS METRIC	THIRD ANGLE PROJECTION	
			mm	INCH	DRAWN BY JOCONNOR	DATE 2010/07/29	TITLE SRC2 FEMALE 84 PIN RECEPTACLE HOUSING ASSEMBLY		
		4 PLACES	± ---	± ---	CHECKED BY JDWALLACE	DATE 2010/08/26	<b>molex</b>		
		3 PLACES	± ---	± ---	APPROVED BY EFOLAN	DATE 2011/02/11			
2 PLACES	± 0.20	± ---	MATERIAL NO. 932878425		DOCUMENT NO. SD-93287-001	SHEET NO. 2 OF 2			
1 PLACE	± 0.5	± ---	DRAFT WHERE APPLICABLE MUST REMAIN WITHIN DIMENSIONS						
0 PLACE	± ---	± ---	SIZE A3 THIS DRAWING CONTAINS INFORMATION THAT IS PROPRIETARY TO MOLEX INCORPORATED AND SHOULD NOT BE USED WITHOUT WRITTEN PERMISSION						