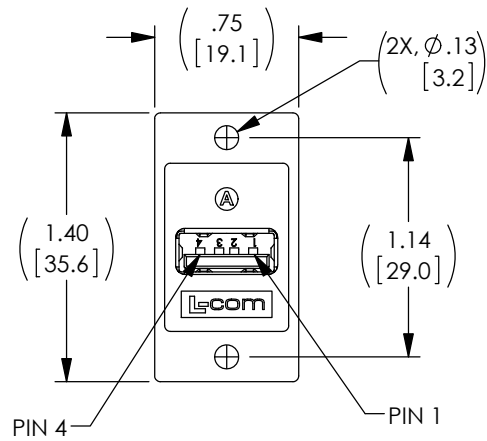
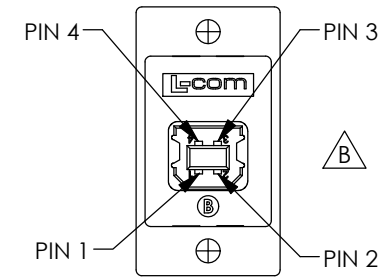
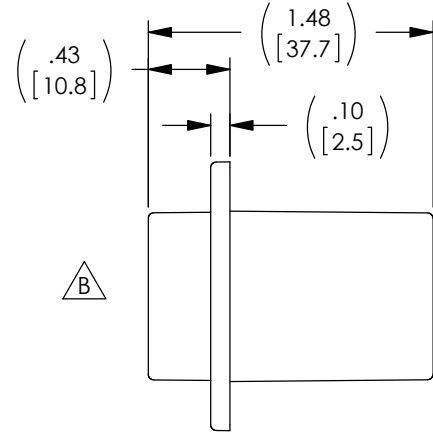


THE INFORMATION CONTAINED IN THIS DRAWING IS THE SOLE PROPERTY OF L-COM, INC. ANY REPRODUCTION IN PART OR WHOLE WITHOUT THE WRITTEN PERMISSION OF L-COM, INC. IS PROHIBITED.

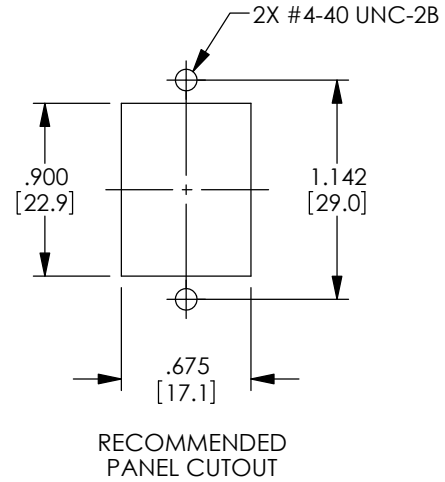
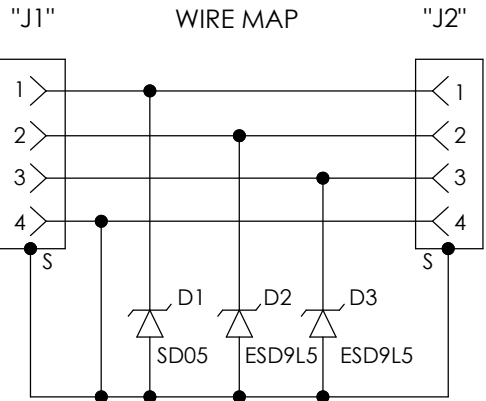
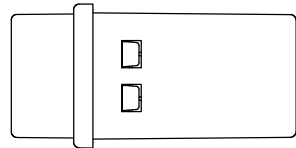
| REVISIONS |   |          |             |
|-----------|---|----------|-------------|
| REV       | DESCRIPTION   | DATE     | APPROVED    |
| A         | CN RELEASE  | 2/26/10  | D.GRIFFIN   |
| B         | ECN 7180: REVISED MODEL TO SNAP VERSION, UPDATED ROHS, FORMAT | 11/27/13 | D.FRISIELLO |
|           |   |          |             |



USB TYPE "A" JACK "J1"



USB TYPE "B" JACK "J2"



RECOMMENDED PANEL CUTOUT

**NOTES:**

**MATERIAL:**

COUPLER HOUSING: ABS, UL94V-0.  
 CONNECTOR INSULATORS: WHITE PBT WITH GLASS FIBER.  
 TYPE "A" CONNECTOR CONTACTS: PHOSPHOR BRONZE.  
 TYPE "A" CONNECTOR SHELL: BRASS.  
 TYPE "B" CONNECTOR CONTACTS: PHOSPHOR BRONZE.  
 TYPE "B" CONNECTOR SHELL FRONT: BRASS.  
 TYPE "B" CONNECTOR SHELL BACK: STEEL.  
 PCB: EPOXY GLASS FP-4, 94V-0 FLAMMABILITY RATING.

**FINISH:**

COUPLER HOUSING: CHROME.  
 CONNECTOR CONTACTS: GOLD, 30μ INCHES.  
 CONNECTOR SHELLS: NICKEL.

**ELECTRICAL:**

DATA LINE CLAMPING VOLTAGE: 5.4V.  
 POWER LINE CLAMPING VOLTAGE: 6.5V.

**ENVIRONMENTAL:**

OPERATING TEMPERATURE: -40° C TO +50° C.

**MISCELLANEOUS:**

COUPLER SHALL BE TESTED FOR CONTINUITY.  
 COUPLER SHALL BE INDIVIDUALLY PACKAGED IN ACCORDANCE WITH L-COM PACKAGING SPEC PS-0031.

**REGULATORY COMPLIANCE:**

CE2011/65/EU (RoHS DIRECTIVE)

|  |  |                                       |                  |  |                          |
|--|--|---------------------------------------|------------------|--|--------------------------|
| UNLESS OTHERWISE SPECIFIED,<br>DIMENSIONS ARE IN INCHES [mm]<br>OVERALL CABLE LENGTH TOLERANCE:<br>≤12 [305] = +1 [25] / -0<br>>12 [305] ≤60 [1524] = +2 [51] / -0<br>>60 [1524] ≤120 [3048] = +4 [102] / -0<br>>120 [3048] ≤300 [7620] = +6 [152] / -0<br>>300 [7620] = +5% / -0%<br>ALL OTHER DIMENSIONAL TOLERANCES:<br>.X = ± .2 [5.08]<br>.XX = ± .02 [51]<br>.XXX = ±.005 [1.27] | APPROVALS<br>DRAWN BY<br>D. CASTRO<br>CHECKED BY<br>D. PARHAM<br>APPROVED BY<br>S. SMITH | DATE<br>7/24/09<br>7/24/09<br>7/24/09 |                  | 45 BEECHWOOD DRIVE<br>NORTH ANDOVER, MA<br>01845 |                          |
|  | CATEGORY<br>USB  |                                       |                  |  |                          |
|  | CONFIGURATION DETAILS OF UNDIMENSIONED FEATURES MAY VARY                                 |                                       |                  | PRODUCT DESCRIPTION<br>LP, USB A/B W/ECF HOUSING |                          |
|  | PROJECTION<br>   | COLOR VARIATIONS MAY OCCUR            | SIZE<br><b>A</b> | FSCM NO.<br><b>43321</b>                         | DWG. NO.<br>AL-ECF504-AB |

SCALE: NONE | CAD FILE: AL-ECF504-AB.SLDDRW | SHEET 1 OF 1