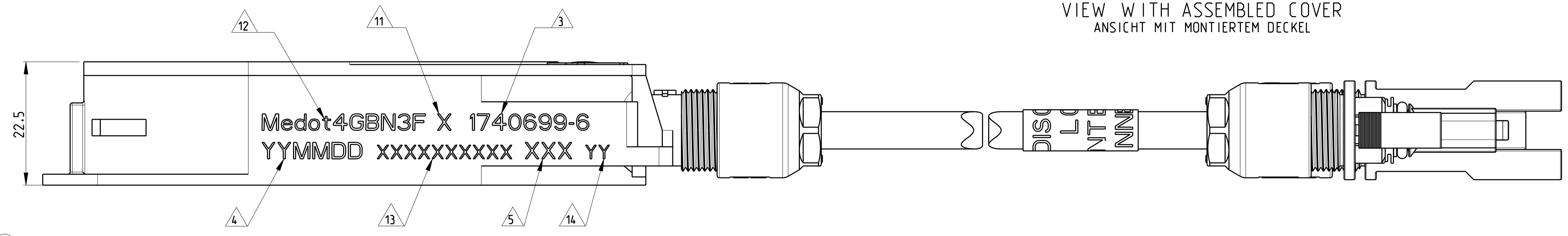
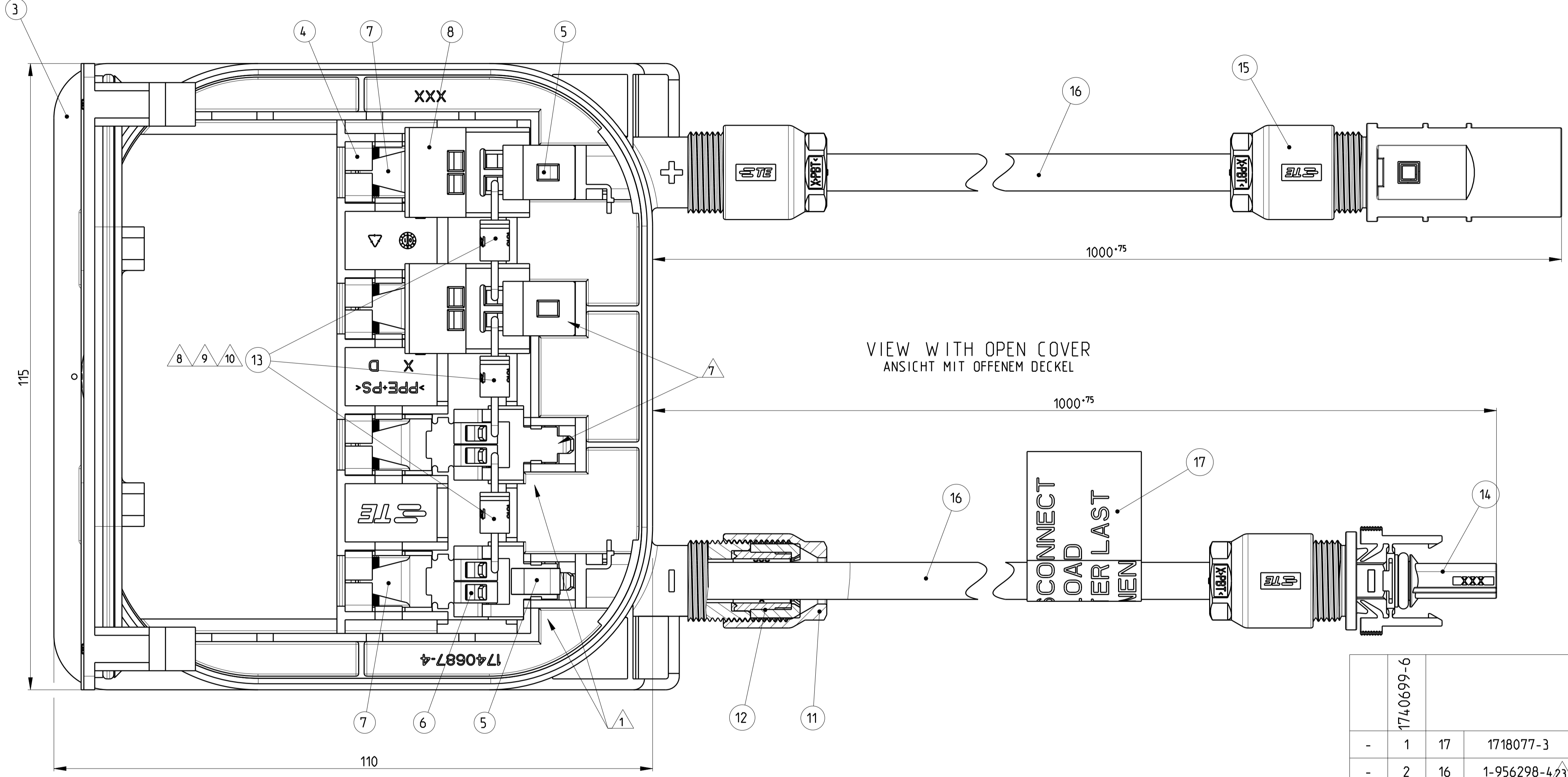


| LOC | DIST | REV | DATE | DWN | APVD |
|-----|------|-----|-----------|-----|------|
| A1 | - | J1 | 23FEB2011 | VP | AW |
| | | J2 | 01JUL2011 | PSK | BW |
| | | K | 16APR2013 | AZ | PY |

VIEW WITH ASSEMBLED COVER
 ANSICHT MIT MONTIERTEM DECKEL

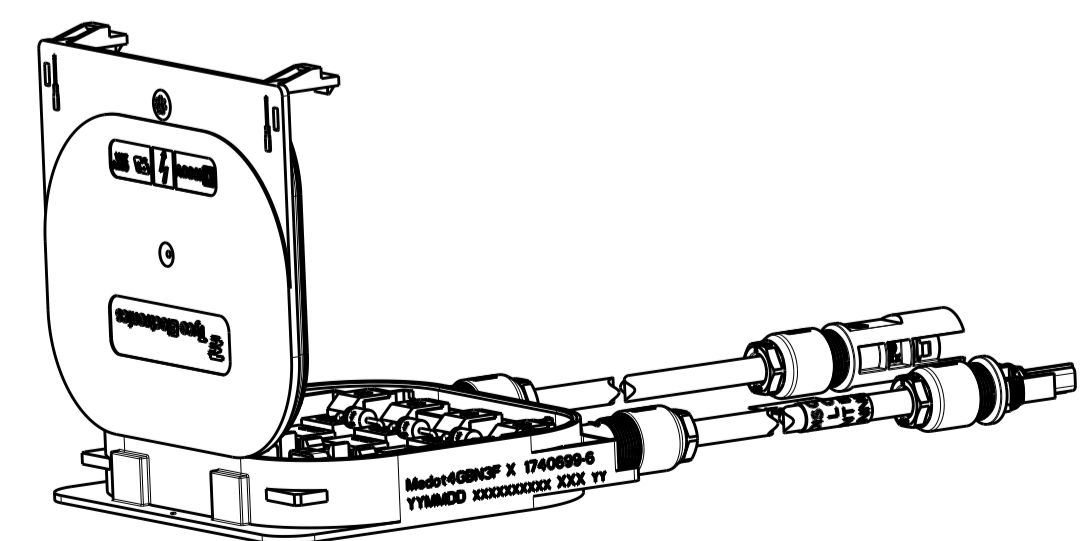


VIEW WITH OPEN COVER
 ANSICHT MIT OFFENEM DECKEL



-6 AS SHOWN
 -6 WIE GEZEICHNET

| ITEM NO. POS. | QTY | PART NUMBER TEILE NUMBER | DESCRIPTION BENENNUNG | COLOR/FARBE | MATERIAL |
|------------------|-----|-----------------------------|---|---------------------------------|-------------------------------------|
| - 1 | 17 | 1718077-3 | LABEL (DO NOT DISCONNECT UNDER LOAD) ETIKETT | WHITE WEISS | POLYESTER |
| - 2 | 16 | 1-956298-4,23 | SOLAR CABLE DUAL RATED (UV, UL) 4mm ² /12 AWG SOLAR KABEL TÜV UND UL ZULASSUNG 4mm ² /12 AWG | BLACK SCHWARZ | - |
| - 1 | 15 | 6-1394461-2 | CONNECTOR (PIN) NEUTRAL CODED STECKERBINDER (STIFT) | BLACK SCHWARZ | PPE+PS/PBT |
| - 1 | 14 | 1394462-4 | CONNECTOR (SOCKET) MINUS CODED STECKERBINDER (BUCHSE) | BLACK SCHWARZ | PPE+PS/PBT |
| - 3 | 13 | - | BYPASS DIODE TYPE: SL1010 BYPASS DIODE TYP: SL1010 | - | - |
| - 2 | 12 | - | PINCH RING SEAL KLEMMRING DICHTUNG | BLACK SCHWARZ | PA66/LSR |
| - 2 | 11 | - | CABLE SCREW JOINT KABELVERSCHALBUNG | BLACK SCHWARZ | PBT |
| - 1 | 10 | - | RING FOR ULTRASONIC WELDING RING FÜR ULTRASCHALLSCHWEISSEN | - | - |
| - 1 | 9 | - | MEMBRANE VENTS MEMBRANE | - | - |
| - 4 | 8 | - | SHROUDING COVER ABDECKHALBE | BLACK SCHWARZ | PET |
| - 4 | 7 | - | FOIL SPRING FOLIEFEDER | PLAIN BLANK | STAINLESS STEEL ROSTFREIER STAHL |
| - 8 | 6 | - | TE SPRING CLAMP WITH ANTI OVERSTRESS AMP-KAFIZUGFEDER MIT ÜBERDEHNFEDER | PLAIN BLANK | STAINLESS STEEL ROSTFREIER STAHL |
| - 2 | 5 | - | TE SPRING CLAMP WITH ANTI OVERSTRESS AMP-KAFIZUGFEDER MIT ÜBERDEHNSCHUTZ | PLAIN BLANK | STAINLESS STEEL ROSTFREIER STAHL |
| - 4 | 4 | - | CONTACT RAIL STROMSCHIENE | TIN HOT DIPPED FEUERVERZINNT | CuSn |
| - 1 | 3 | - | SOLAR MODUL BOX LOWER PART SOLAR MODUL BOX UNTERTEIL | BLACK SCHWARZ | PPE+PS |
| - 1 | 2 | - | O-RING SEAL O-RING DICHTUNG | RED ROT | SILICONE |
| - 1 | 1 | - | SOLAR MODULE BOX COVER SOLAR MODUL BOX DECKEL | BLACK SCHWARZ | PC |



SCALE 1:2 / M 1:2

THIS DRAWING IS A CONTROLLED DOCUMENT.
 DIMENSIONS: MASSTABEINHEITEN: mm
 TOLERANCES UNLESS OTHERWISE SPECIFIED: TOLERANZEN UNLESS OTHERWISE SPECIFIED:
 0 PLC ±0.5
 1 PLC ±0.5
 2 PLC ±
 3 PLC ±
 4 PLC ±
 MATERIAL: MATERIAL:
 DWG: J.Zapf 11DEC2006
 CHK: H.Scherer 11DEC2006
 APVD: G.Eldmeier 11DEC2006
 NAME: SOLAR BOX MEDOT WITH CABLE, ASSY
 SOLAR BOX MEDOT MIT KABEL, ASSY
 SIZE: A1 00779
 CAGE CODE: 1740699-6
 DRAWING NO.: 1740699-6
 RESTRICTED TO: NUR FÜR:
 Customer Drawing / KUNDENZEICHNUNG
 SCALE: 1:2
 SHEET: 1 OF 3
 REV: K

| LOC | DIST | REVISIONS | | | | | |
|-----|------|-----------|-----|-------------|------|-----|------|
| | | P | LTR | DESCRIPTION | DATE | DWN | APVD |
| A1 | - | - | - | SEE SHEET 1 | - | - | - |

- 1 SHROUDING COVER ITEM NO. 8 NOT SHOWN
- 2 COVER NOT ASSEMBLED WITH LOWER PART. ENCLOSE LOOSELY
- 3 PART NUMBER
- 4 PRODUCTION DATE (YYMMDD)
- 5 MANUFACTURING LOCATION CODE.
- 6 FOR CABLES PER APPLICATION SPEC. 114-18488-1 WITH OUTER DIAMETER 5.5 - 7.8mm
- 7 CONTACT RAIL ITEM NO. 4 (2x) CAN BE ALSO ASSEMBLED WITH TE SPRING CLAMP ITEM NO. 5 (2x). OPTIONAL
- 8 DIODE ACCORDING TO SPECIFICATION 108-94045-1
- 9 DIODE SL1110 ACC. SPEC. 108-94119 OR SL1110B ACC. SPEC. 108-2444 CAN BE ALTERNATIVELY USED
- 10 ONLY DIODES OF THE SAME TYPE RESP. DESIGNATION ARE PERMITTED FOR USE IN ONE AND THE SAME SOLAR BOX. ONLY SOLAR BOXES WITH THE SAME DIODES ARE PERMITTED TO PACK IN ONE AND THE SAME CORRUGATED SHIPPING BOX.
- 11 MARK FOR DIODE TYPE.
 LEAVE BLANK FOR DIODE SL1010
 A FOR DIODE SL1110
 B FOR DIODE SL1110B
- 12 MODEL CODE ACCORDING TE-SPEC. 404-74000-1
- 13 CONSECUTIVE SERIAL NUMBER
- 14 TEST EQUIPMENT NUMBER
- 15 PV CABLE ZHSCGB.PN 1983530-1 CAN BE ALTERNATIVELY USED

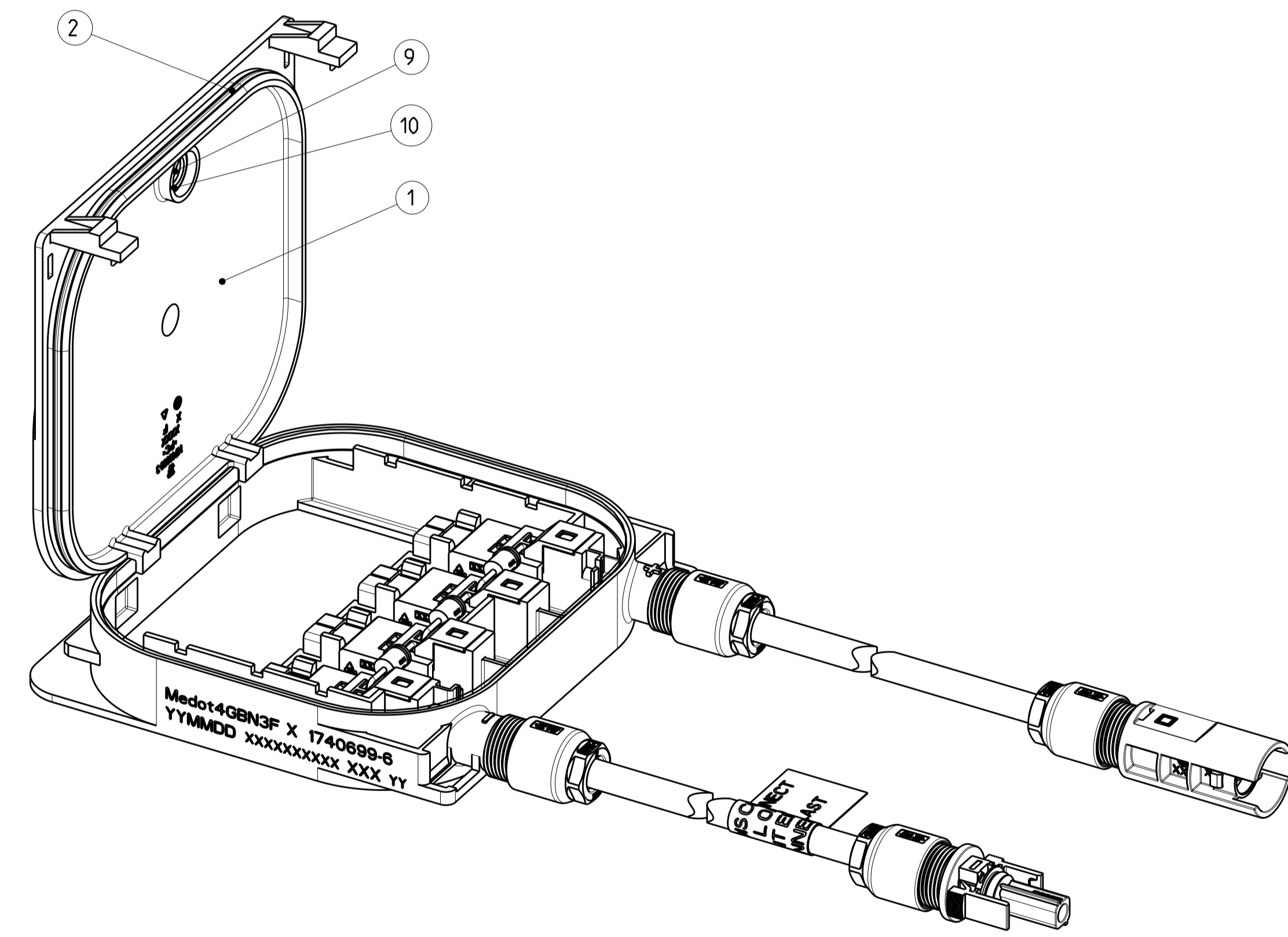
MOUNTING INSTRUCTION

- FOR COVER, ASSY:**
1. MOUNT COVER ITEM NO. 1 AND 2 INTO THE LOWER PART ITEM NO. 3 AND CLOSE IT. (LATCH SNAP IN).
 2. RE-OPEN: PUT IN MARKED OPENING SCREWDRIVER 3mm AND MOVE LATCH UNTIL LOCKING LATCH FREE THE COVER. OPEN COVER ITEM NO. 1 AND 2

MONTAGEANWEISUNG

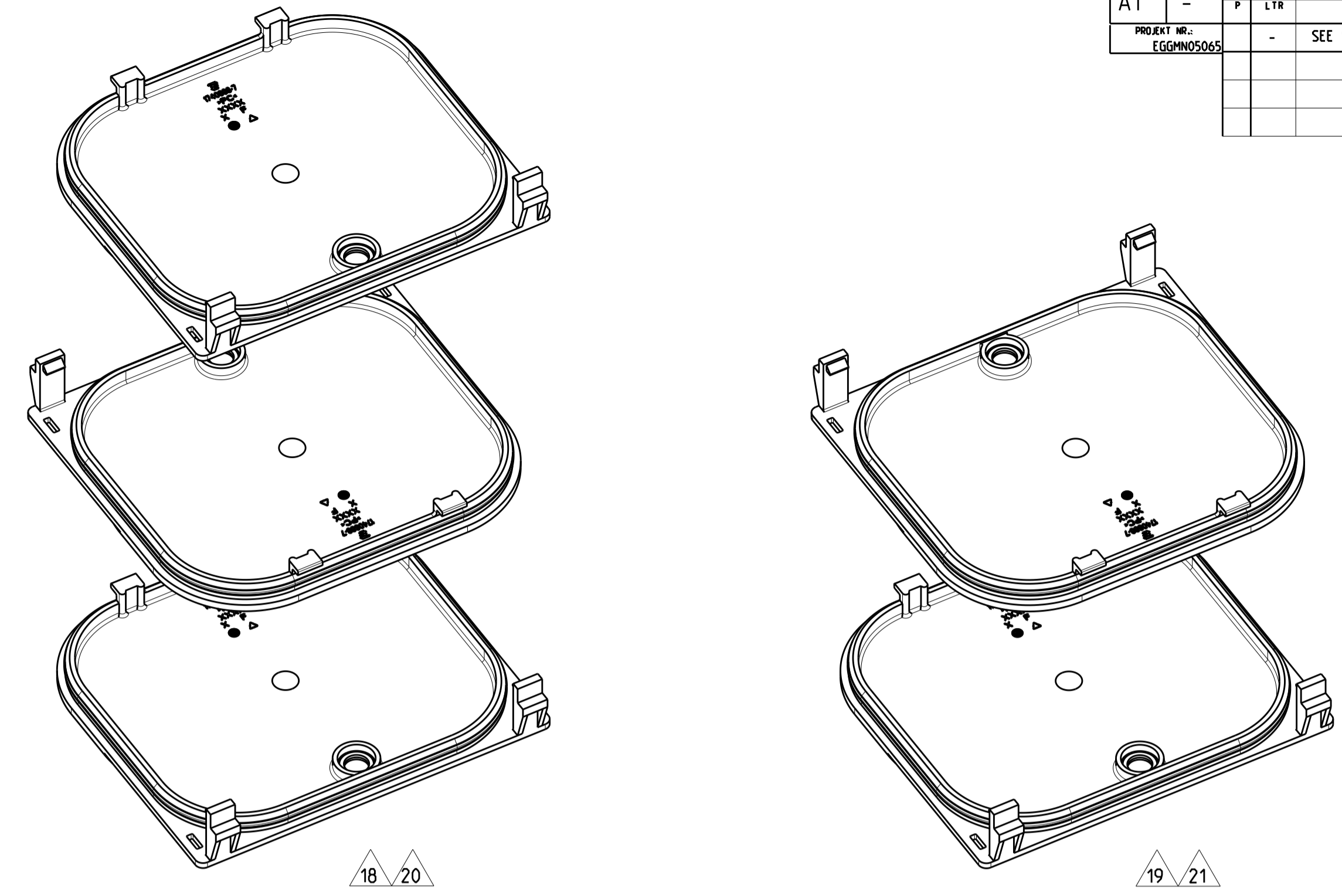
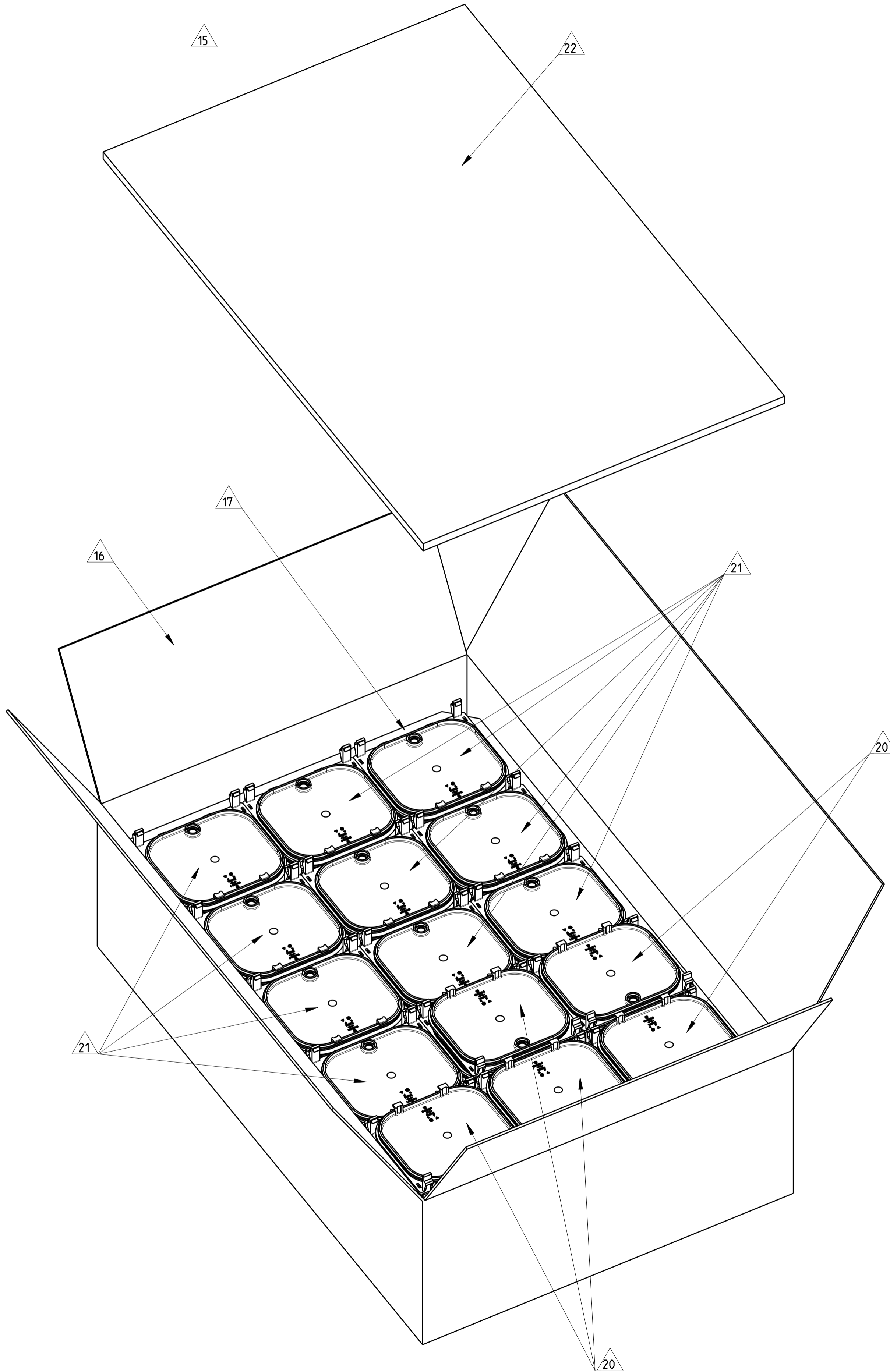
- FÜR DECKEL, ASSY:**
1. DECKEL ITEM NO. 1 UND 2 IN DAS UNTERTEIL ITEM NO. 3 EINHÄNGEN UND SCHLIESSEN. (LASCHE RASTET EIN).
 2. ÖFFNEN: SCHRAUBENDREHER 3mm IN MARKIERTE ÖFFNUNG EINSTECKEN UND LASCHE BEWEGEN BIS RASTHAKEN DEN DECKEL FREI GIBT. DECKEL ITEM NO. 1 UND 2

VIEW WITH ASSEMBLED COVER
 ANSICHT MIT MONTIERTEM DECKEL



| | | | |
|--|------------|----------------------------------|---|
| THIS DRAWING IS A CONTROLLED DOCUMENT. | | DWN J.Zopf 11DEC2006 | TE Connectivity |
| DIMENSIONS: mm | | CHK H.Scherer 11DEC2006 | |
| TOLERANCES UNLESS OTHERWISE SPECIFIED: | | APVD G.Feldmeier 11DEC2006 | NAME SOLAR BOX MEDOT WITH CABLE, ASSY SOLAR BOX MEDOT MIT KABEL, ASSY |
| 0 PLC ±0.5 | 1 PLC ±0.5 | PRODUCT SPEC 108-94064 | SIZE A1 |
| 2 PLC ± | 3 PLC ± | APPLICATION SPEC 114-18488 | CAGE CODE C=1740699-6 |
| 4 PLC ± | ANGLES ± | WEIGHT | RESTRICTED TO |
| FINISH | | Customer Drawing | SCALE 2:1 SHEET 2 OF 3 REV K |

| LOC | DIST | REV | DATE | DWN | APVD |
|-------------------------|------|-------------|------|-----|------|
| A1 | - | | | | |
| PROJECT NO.: EGEHM05065 | | SEE SHEET 1 | | | |



PACKAGING: 35 PIECES SOLAR MODULE BOX MEDOT WITH CABLE, ASSY IN TWO ROWS OF 17 AND 18 BOXES ON TOP OF CORRUGATED LAYER PAD IN CORRUGATED SHIPPING BOX $\triangle 16$ PER TE-SPEC. 107-18052.
 SOLAR MODULE BOX MEDOT WITH CABLE, ASSY COVERED WITH CORRUGATED LAYER PAD $\triangle 17$.
 35 PIECES SOLARBOX LID ASSY'S ITEM NO. 1 STACKED AS SHOWN IN $\triangle 18$ AND $\triangle 19$.
 3 x 5 STACKS OF 3 PIECES $\triangle 18$ AND 2 PIECES $\triangle 19$ PACKAGED IN ESD PLASTIC BAG AND PUT ON THE CORRUGATED LAYER PAD $\triangle 16$.
 ON TOP USED AS COVER PAPER CUSHION $\triangle 17$.

PACKAGING UNIT: 35 PIECES
MINIMUM ORDER QUANTITY: 35 PIECES

23 ESD PLASTIC BAG NOT SHOWN

VERPACKUNG: 35 STÜCK SOLAR MODUL BOX MEDOT WITH KABEL, ASSY ZWEIREIHIG MIT 17 UND 18 BOXEN VERPACKT AUF ZWISCHENLAGENWELLPAPIER IN VERSANDKARTON $\triangle 16$ NACH TE-SPEZ. 107-18052.
 SOLAR MODUL BOX MEDOT WITH KABEL, ASSY MIT ZWISCHENLAGENWELLPAPIER $\triangle 17$ ABGEDECKT.
 35 STÜCK SOLARBOX DECKEL ASSY'S ITEM NO. 1 ÜBEREINANDERGESTAPELT WIE IN $\triangle 18$ UND $\triangle 19$ DARGESTELLT.
 3 x 5 STAPEL ZU JE 3 STÜCK $\triangle 18$ UND 2 STÜCK $\triangle 19$ IN ESD KUNSTSTOFF-BEUTEL VERPACKT UND AUF DAS ZWISCHENLAGENWELLPAPIER $\triangle 16$ GELEGT.
 OBENAUF PAPIERPOLSTERKISSEN $\triangle 17$ ALS ABDECKUNG VERWENDET.

VERPACKUNGSEINHEIT: 35 STÜCK
MINDESTBESTELLMENGE: 35 STÜCK

23 ESD KUNSTSTOFF-BEUTEL NICHT DARGESTELLT

| | | | |
|--|--|---|---|
| THIS DRAWING IS A CONTROLLED DOCUMENT. | | DWN J.Zopf 11DEC2006 | TE Connectivity |
| DIMENSIONS: MASSENMETER [mm] | | CHK H.Scherer 11DEC2006 | |
| TOLERANCES UNLESS OTHERWISE SPECIFIED: ALL DIMENSIONS | | APVD G.Feldmeier 11DEC2006 | NAME SOLAR BOX MEDOT WITH CABLE, ASSY SOLAR BOX MEDOT MIT KABEL, ASSY |
| 0 PLC ± 0.5 1 PLC ± 0.5 2 PLC \pm 3 PLC \pm 4 PLC \pm 5 PLC \pm ANGLES/SHOULDER/FLANGE | | PRODUCT SPEC 108-94.064 APPLICATION SPEC VERABREITUNGSSPEZ. TIL-184.088 | |
| MATERIAL | | WEIGHT GEWICHT | SIZE A1 CAGE CODE 00779 DRAWING NO. ZEICHNUNGS-NR. 1740699-6 |
| | | Customer Drawing | RESTRICTED TO NON PUR SCALE MASSSTAB 2:1 SHEET BLATT 3 OF VON 3 REV K |