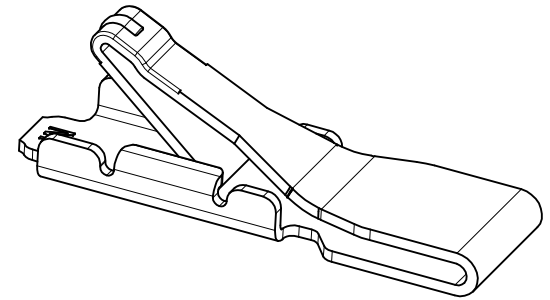
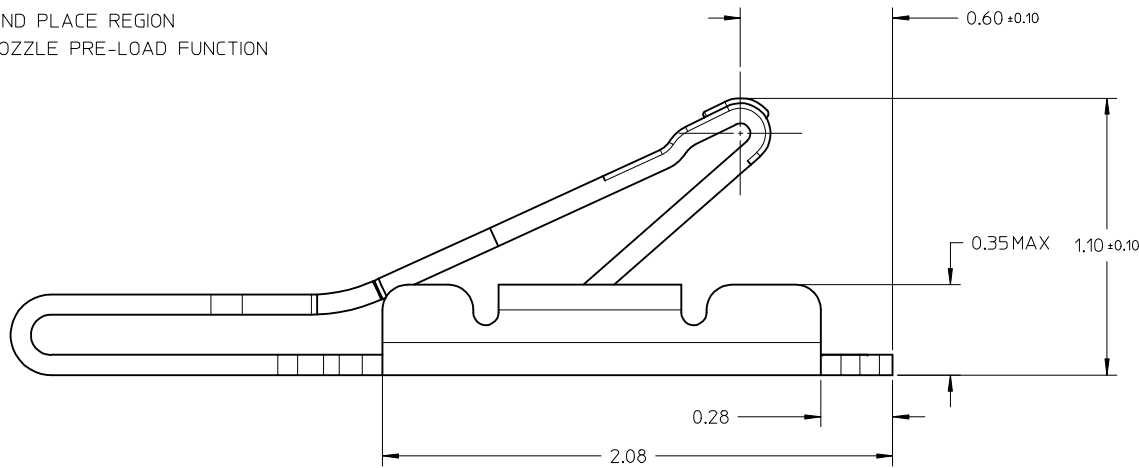


P/N:	PLATING
1053860003	NI UNDER PLATING OVERALL: 2µm MINIMUM SOLDERING AREA: GOLD FLASH CONTACT AREA: 0.25µm Au MINIMUM
1053860004	NI UNDER PLATING OVERALL: 2µm MINIMUM SOLDERING AREA: GOLD FLASH CONTACT AREA: 1.0µm Au MINIMUM

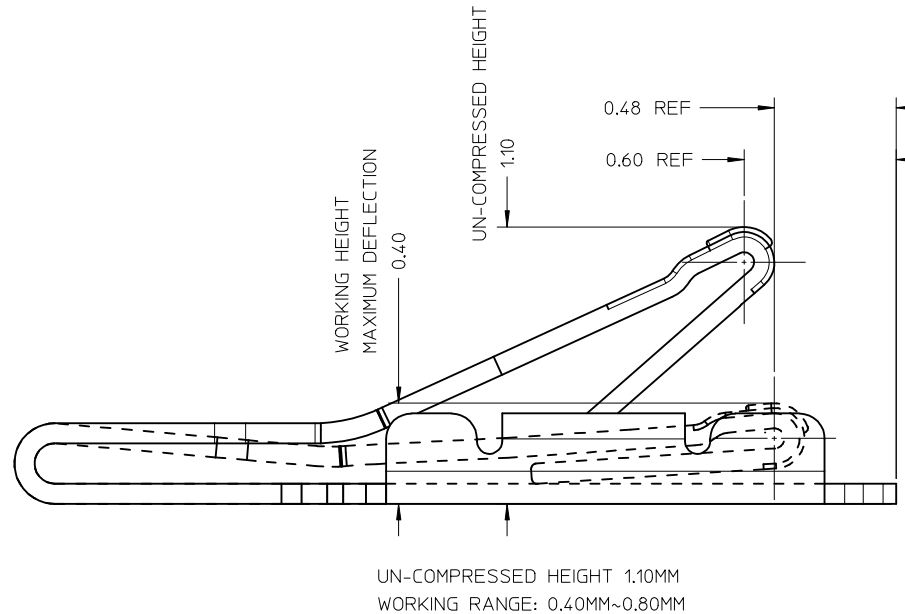
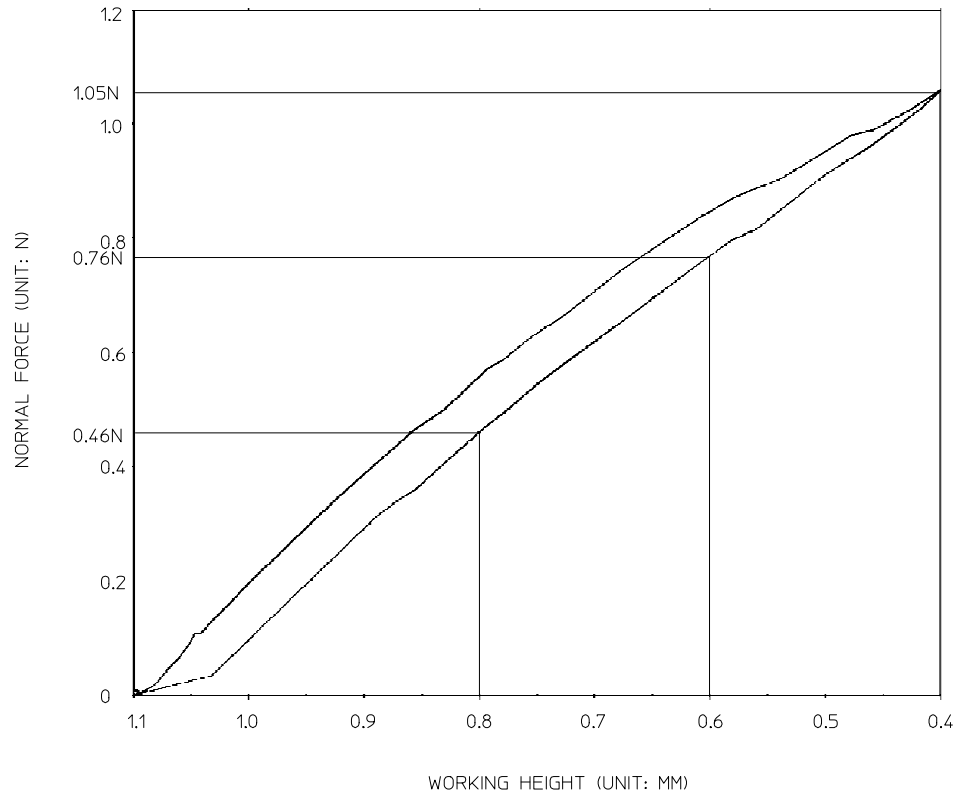
∅0.90 REF  
PICK AND PLACE REGION  
FOR NOZZLE PRE-LOAD FUNCTION



NOTES:

- MATERIAL: STAINLESS STEEL, THICKNESS=0.08mm
- FINISH:  
SEE TABLE
- DURABILITY AND NORMAL FORCE:  
DURABILITY: 1500 CYCLES  
NORMAL FORCE: 0.25N MINIMUM BEFORE DURABILITY  
0.20N MINIMUM AFTER DURABILITY
- LOW LEVEL CONTACT RESISTANCE: 50 MILLIOHMS MAXIMUM
- COMPONENT UN-COMPRESSED HEIGHT: 1.10MM  
COMPONENT WORKING RANGE: 0.40MM~0.80MM

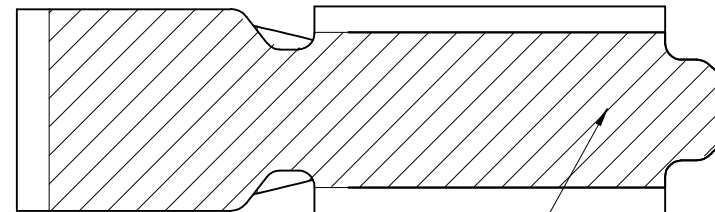
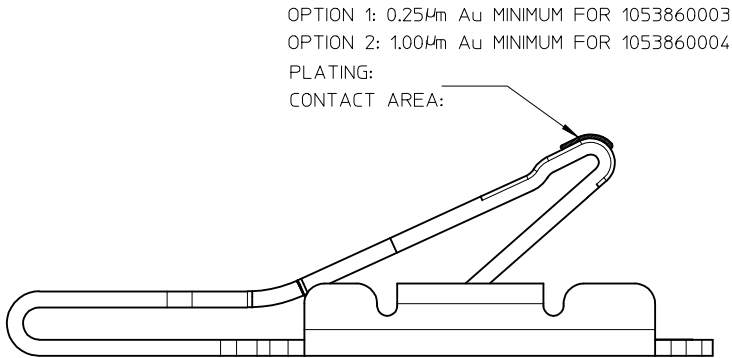
OFFICIAL VERSION EC NO: SH2015-0239 DRW:RL109 2015/03/09 CHKD: APPR:RZHANG 2015/03/16	QUALITY SYMBOLS	GENERAL TOLERANCES (UNLESS SPECIFIED)		DIMENSION STYLE	SCALE	DESIGN UNITS	THIRD ANGLE PROJECTION	
	$F_A=0$ $F_G=0$ $F_P=0$	mm	INCH	MM ONLY	50:1	METRIC		
		4 PLACES	± ---	± ---	DRAWN BY	DATE		TITLE
		3 PLACES	± ---	± ---	RL109	2014/05/07		RF SPRING WORKING RANGE 0.40MM~0.80MM
2 PLACES	± 0.15	± ---	CHECKED BY	DATE				
1 PLACE	± 0.20	± ---	APPROVED BY	DATE				
0 PLACE	± ---	± ---	RZHANG	2015/03/16				
	ANGULAR ± 3 °		MATERIAL NO.	SEE TABLE		DOCUMENT NO.	SHEET NO.	
	DRAFT WHERE APPLICABLE MUST REMAIN WITHIN DIMENSIONS		SIZE	THIS DRAWING CONTAINS INFORMATION THAT IS PROPRIETARY TO MOLEX INCORPORATED AND SHOULD NOT BE USED WITHOUT WRITTEN PERMISSION		SD-105386-002	1 OF 4	
A	REV	A3						



NORMAL FORCE: 0.46N AT 0.80 MM WORKING HEIGHT (MINIMUM DEFLECTION)  
 NORMAL FORCE: 0.76N AT 0.60 MM WORKING HEIGHT (NORMAL DEFLECTION)  
 NORMAL FORCE: 1.05N AT 0.40 MM WORKING HEIGHT (MAXIMUM DEFLECTION)

<b>OFFICIAL VERSION</b> EC NO: SH2015-0239 DRW: RL109 2015/03/09 CHKD: APPR: RZHANG 2015/03/16	QUALITY SYMBOLS	GENERAL TOLERANCES (UNLESS SPECIFIED)	DIMENSION STYLE	SCALE	DESIGN UNITS	THIRD ANGLE PROJECTION
	$F_A=0$ $F_G=0$ $F_P=0$	mm INCH 4 PLACES ± --- ± --- 3 PLACES ± --- ± --- 2 PLACES ± 0.15 ± --- 1 PLACE ± 0.20 ± --- 0 PLACE ± --- ± ---	MM ONLY	50:1	METRIC	
	DESCRIPTION	ANGULAR ± 3 °	DRAWN BY	DATE	TITLE	
	REV	DRAFT WHERE APPLICABLE MUST REMAIN WITHIN DIMENSIONS	RL109	2014/05/07	RF SPRING WORKING RANGE 0.40MM~0.80MM	
A		SEE TABLE	CHECKED BY	DATE	<b>molex</b> SD-105386-002	
			APPROVED BY	DATE	SHEET NO. 2 OF 4	
			RZHANG	2015/03/16	THIS DRAWING CONTAINS INFORMATION THAT IS PROPRIETARY TO MOLEX INCORPORATED AND SHOULD NOT BE USED WITHOUT WRITTEN PERMISSION	
			MATERIAL NO.	DOCUMENT NO.		

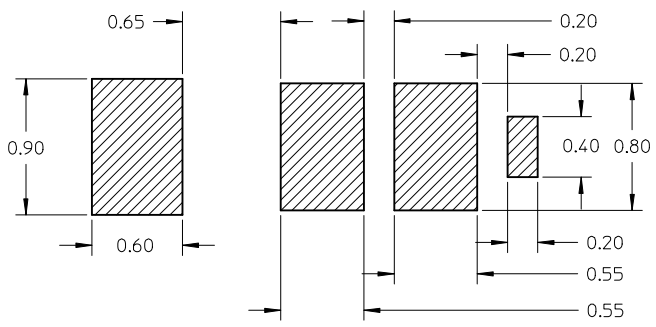
10 9 8 7 6 5 4 3 2 1



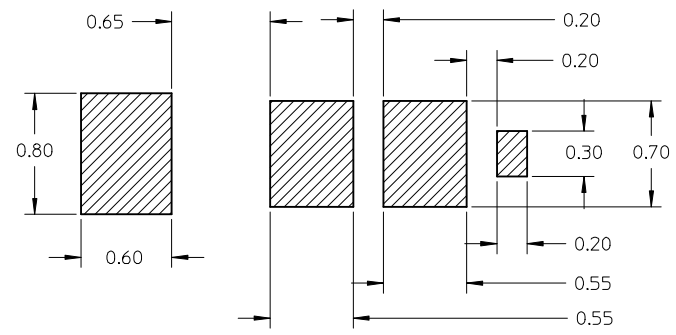
PLATING  
 SOLDERING AREA: GOLD FLASH

<b>OFFICIAL VERSION</b> EC NO: SH2015-0239 DRW:RL109 2015/03/09 CHKD: APPR:RZHANG 2015/03/16 REV <b>A</b>	QUALITY SYMBOLS $F_A=0$ $F_G=0$ $F_P=0$	GENERAL TOLERANCES (UNLESS SPECIFIED) <table border="1"> <thead> <tr> <th></th> <th>mm</th> <th>INCH</th> </tr> </thead> <tbody> <tr> <td>4 PLACES</td> <td>± ---</td> <td>± ---</td> </tr> <tr> <td>3 PLACES</td> <td>± ---</td> <td>± ---</td> </tr> <tr> <td>2 PLACES</td> <td>± 0.15</td> <td>± ---</td> </tr> <tr> <td>1 PLACE</td> <td>± 0.20</td> <td>± ---</td> </tr> <tr> <td>0 PLACE</td> <td>± ---</td> <td>± ---</td> </tr> </tbody> </table>		mm	INCH	4 PLACES	± ---	± ---	3 PLACES	± ---	± ---	2 PLACES	± 0.15	± ---	1 PLACE	± 0.20	± ---	0 PLACE	± ---	± ---	DIMENSION STYLE <b>MM ONLY</b>	SCALE <b>50:1</b>	DESIGN UNITS <b>METRIC</b>	THIRD ANGLE PROJECTION
		mm	INCH																					
	4 PLACES	± ---	± ---																					
	3 PLACES	± ---	± ---																					
2 PLACES	± 0.15	± ---																						
1 PLACE	± 0.20	± ---																						
0 PLACE	± ---	± ---																						
	DRAFT WHERE APPLICABLE MUST REMAIN WITHIN DIMENSIONS	ANGULAR ± 3 °	DRAWN BY RL109	DATE 2014/05/07	TITLE <b>RF SPRING WORKING RANGE 0.40MM~0.80MM</b>																			
			CHECKED BY	DATE	APPROVED BY RZHANG																			
			MATERIAL NO. <b>SEE TABLE</b>	DATE 2015/03/16	DOCUMENT NO. <b>SD-105386-002</b>	SHEET NO. 3 OF 4																		

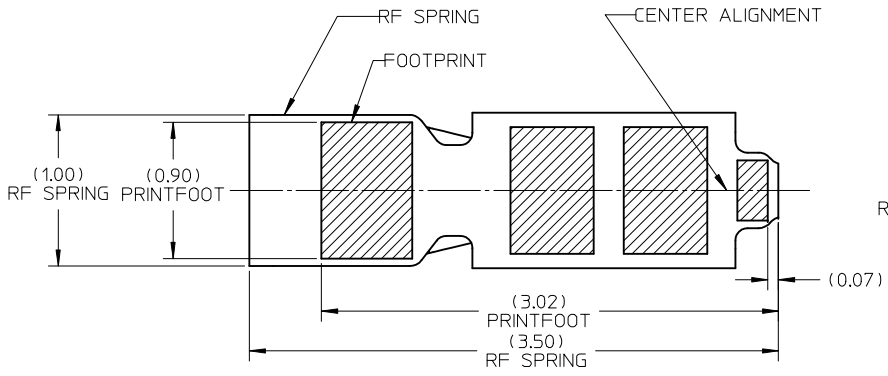
9 8 7 6 5 4 3 2 1



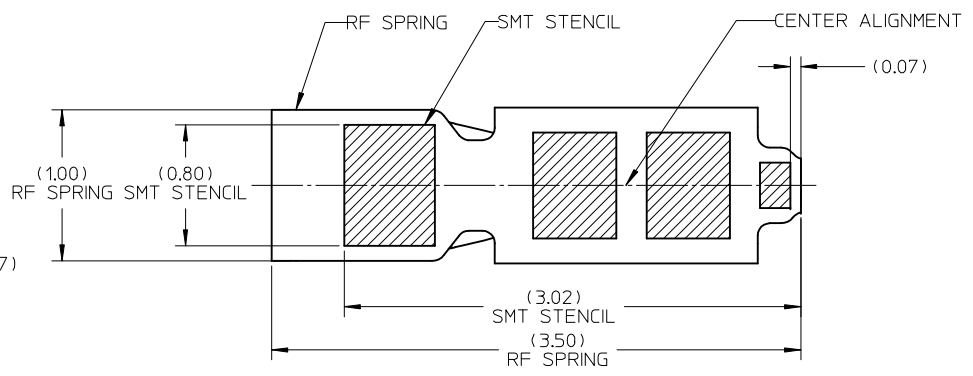
RECOMMENDED FOOTPRINT  
(TOLERANCE ±0.05)



SMT STENCIL  
PROFILE TOLERANCE: ±0.05  
THICKNESS: 0.08MM



RELATIVE LOCATION: FOOTPRINT VS RF SPRING



RELATIVE LOCATION: STENCIL VS RF SPRING

<b>OFFICIAL VERSION</b> EC NO: SH2015-0239 DRW: RL109 CHKD: APPR: RZHANG 2015/03/09 2015/03/16	QUALITY SYMBOLS $F_A=0$ $F_G=0$ $F_P=0$	GENERAL TOLERANCES (UNLESS SPECIFIED) mm    INCH 4 PLACES ± --- ± --- 3 PLACES ± --- ± --- 2 PLACES ± 0.15 ± --- 1 PLACE ± 0.20 ± --- 0 PLACE ± --- ± --- ANGULAR ± 3 ° DRAFT WHERE APPLICABLE MUST REMAIN WITHIN DIMENSIONS	DIMENSION STYLE <b>MM ONLY</b> DRAWN BY: RL109    DATE: 2014/05/07 CHECKED BY:    DATE: APPROVED BY: RZHANG    DATE: 2015/03/16 MATERIAL NO.    DOCUMENT NO.	SCALE <b>50:1</b>	DESIGN UNITS <b>METRIC</b>	THIRD ANGLE PROJECTION	
				TITLE <b>RF SPRING WORKING RANGE 0.40MM~0.80MM</b>			
				SEE TABLE	<b>molex</b> SD-105386-002		
				THIS DRAWING CONTAINS INFORMATION THAT IS PROPRIETARY TO MOLEX INCORPORATED AND SHOULD NOT BE USED WITHOUT WRITTEN PERMISSION	SHEET NO. 4 OF 4		