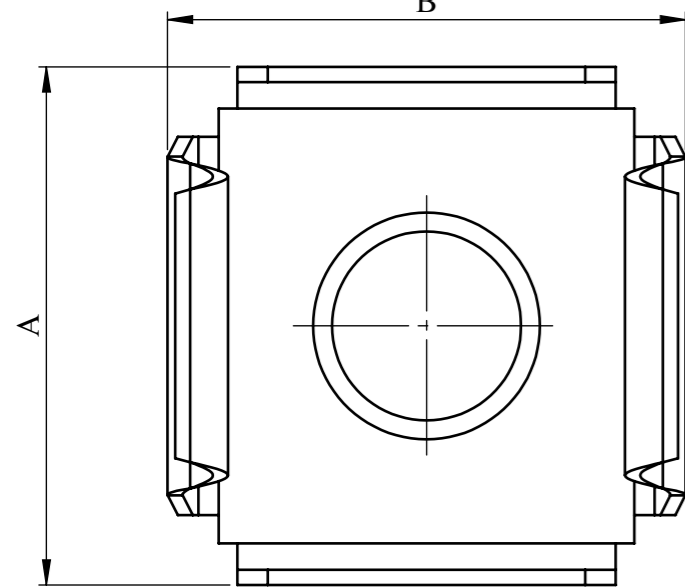


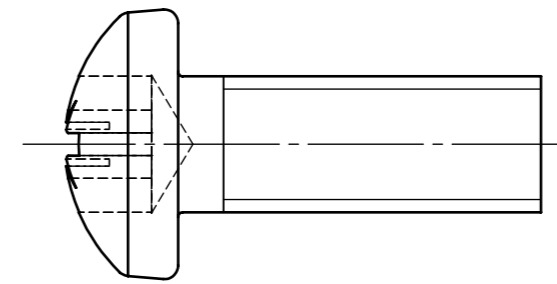
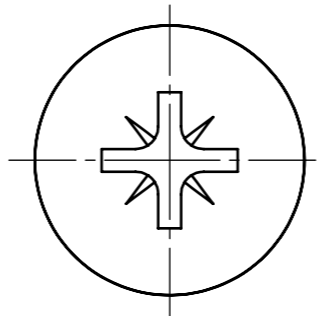
DEBUR AND BREAK SHARP EDGES

DO NOT SCALE DRAWING

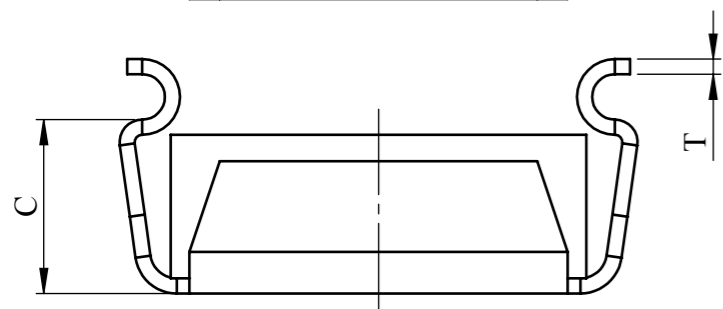
REVISION



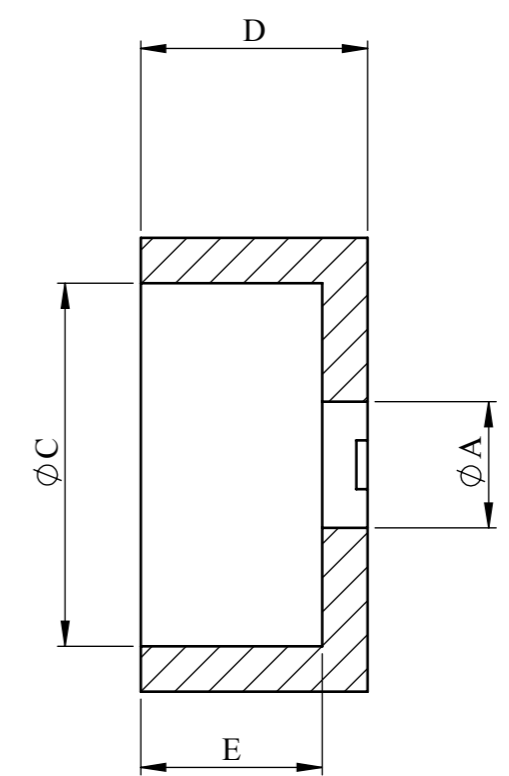
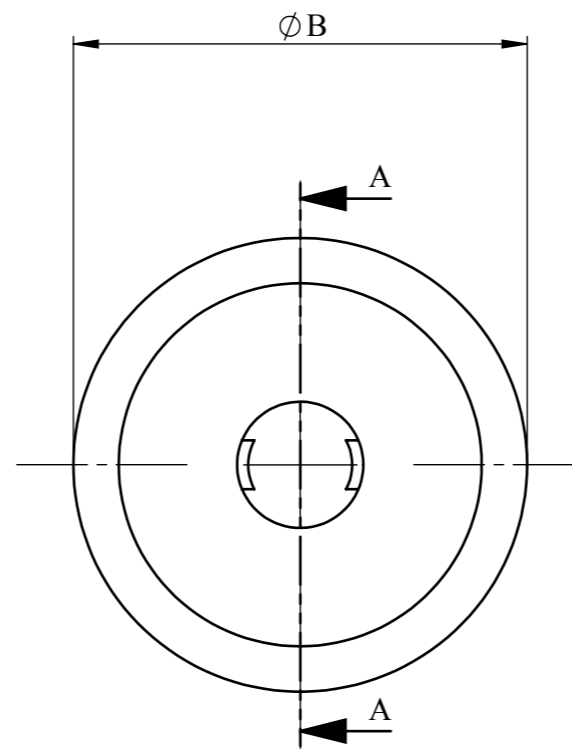
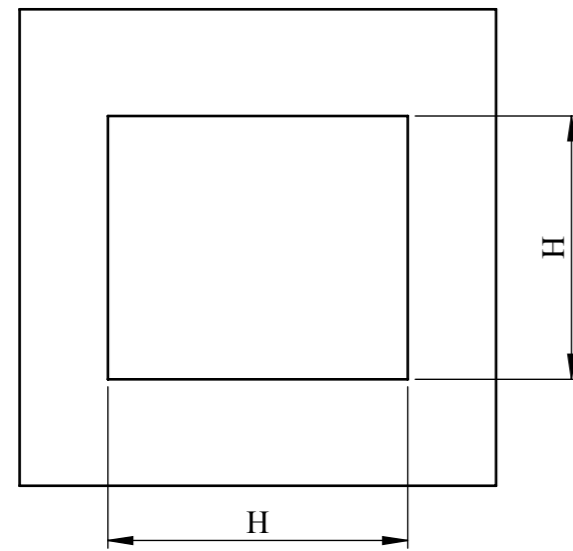
CAGE NUT				
A	B	C	T	H
13.14	13.84	6	0.38	9.53



M6 x 16 M/C SCREW TO DIN 7985



CAGE NUT - M6 WIDE  
 PANEL RANGE 1,80 TO 2,60 ( 15 Swg TO 12 Swg)  
 NUT SIZE - 11,10 SQ x 4,80 THICK



RETAINING CUP WASHER				
A	B	C	D	E
M6	15.00	12.00	4.00	2.70

NOTES

SCREW - STEEL 4,8, ZINC & CLEAR  
 CAGE NUT - CAGE CS70 CARBON SPRUNG STEEL  
 - NUT LOW CARBON MILD STEEL  
 - ZINC & CLEAR  
 RETAINING CUP WASHER - PA6 BLACK



DESIGN RIGHT. TR FASTENINGS LTD, 2003  
 UNDER NO CIRCUMSTANCES MUST THIS  
 DRAWING BE COPIED OR DISCLOSED,  
 WITHOUT FIRST OBTAINING WRITTEN  
 AUTHORITY.

UNLESS OTHERWISE SPECIFIED:  
 DIMENSIONS ARE IN MILLIMETERS  
 SURFACE FINISH:  
 TOLERANCES:

ISO 2768 m

NAME	DATE
DRAWN MARTIN ELLIOTT	
CHK'D	
APPV'D	

CUSTOMER PART No

MATERIAL:

SEE NOTES

HEAT TREATMENT

SEE NOTES

FINISH:

SEE NOTES

TITLE:

FIXING KIT, PANEL, M6

DWG NO.

TRFAKIT0004

A3