

# MICRO SWITCH

A DIVISION OF MINNEAPOLIS-HONEYWELL REGULATOR COMPANY  
PROBOPORT, ILLINOIS

FED. MFR. CODE 91929

## SWITCH-BASIC

CATALOG LISTING

### 111SM2

111SM2

PAGE 1 OF 1

REPLACES

RELEASE NO. SR 9566

CHECK

CHECK

CHECK

CHECK

CHECK

CHECK

CHECK

M

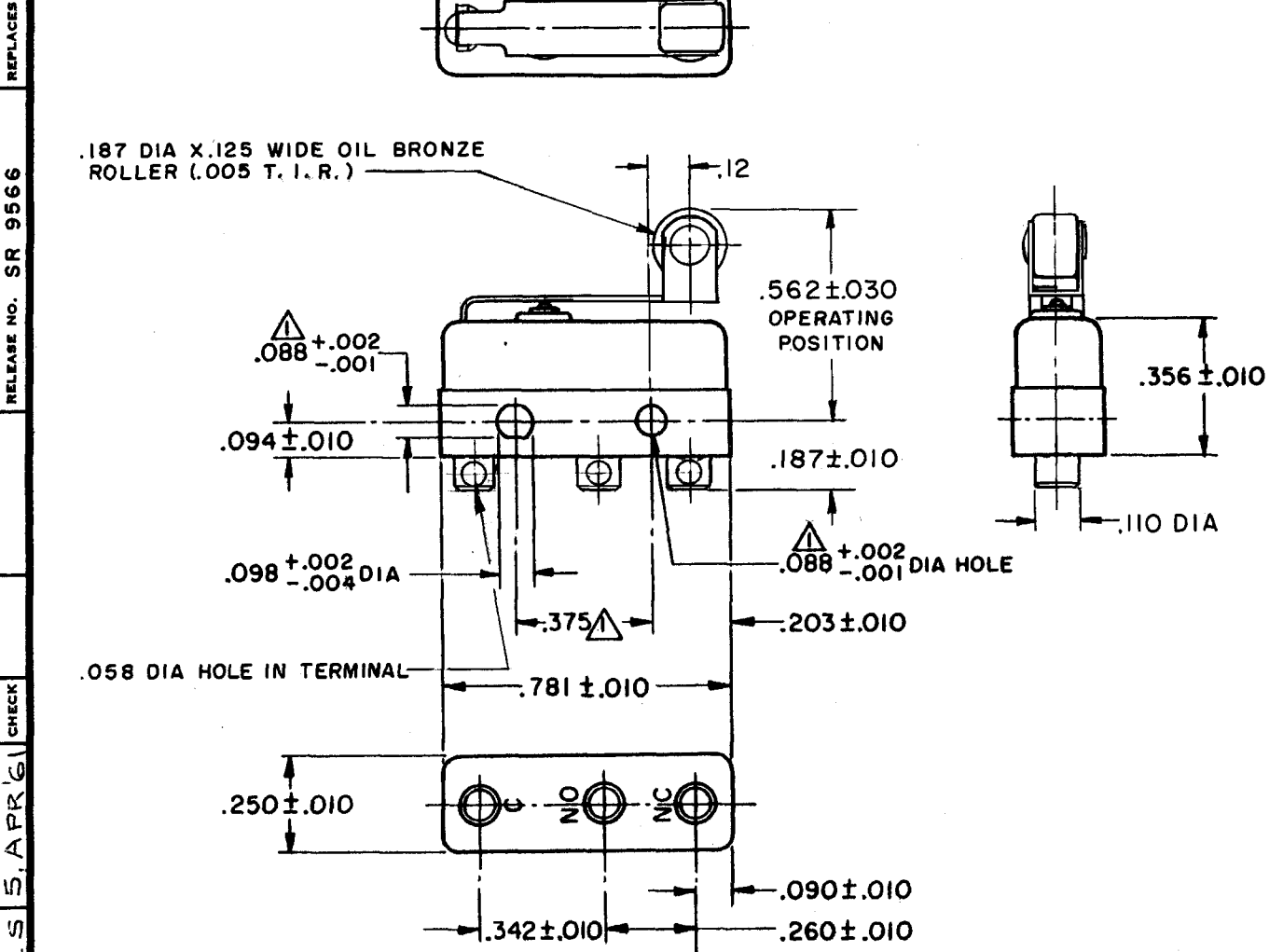
DRAWING NUMBER

X8

X5

REVISIONS

A	0029449		
R	C	12 SEPT 72	
B	77768	CO- 12 JUL 94	SAD
C	0079612	12 APR 95	SAD
D	205616	21 MAY 02	GJW



NOTE -

- ▲ - MOUNTING HOLES WILL ACCEPT PINS OR SCREWS OF  $.087$  MAX DIA ON  $.375 \pm .002$  CENTERS
- 2 - TERMINALS ARE PLATED FOR SOLDERING

THIS DRAWING COVERS A PROPRIETARY ITEM AND IS THE PROPERTY OF MICRO SWITCH, A DIVISION OF MINNEAPOLIS-HONEYWELL REGULATOR CO. THIS DRAWING IS NOT TO BE COPIED OR USED WITHOUT THE APPROVAL OF MICRO SWITCH.

CHARACTERISTICS	
OPERATING FORCE	-----7 OZ MAX
RELEASE FORCE	-----2 OZ MIN
PRETRAVEL	-----.219 MAX
DIFFERENTIAL TRAVEL	-----.025 MAX
OVERTRAVEL	-----.030 MIN

ELECTRICAL DATA	
CONTACT ARRANGEMENT	BREAK DISTANCE
S P D T	.010 MIN
30 VOLTS DC RATING	
INDUCTIVE	SEA LEVEL --- 3 AMP
	50,000 FT. --- 2.5 AMP
RESISTIVE	SEA LEVEL --- 5 AMP
	50,000 FT. --- 5 AMP
MAXIMUM INRUSH	--- 24 AMP

SCALE 2 TO 1	
DO NOT SCALE PRINT	
UNLESS OTHERWISE SPECIFIED	
DIMENSIONS ARE IN INCHES	
<b>TOLERANCES ARE:</b>	
ONE PLACE (.0)	±.030
TWO PLACE (.00)	±.015
THREE PLACE (.000)	±.005
ANGLES	±
WEIGHT .008 LB MAX	

L4 5A 250 VAC ~

RASTER

FO-50378

DRAWN

CHECK

CHECK

CHECK