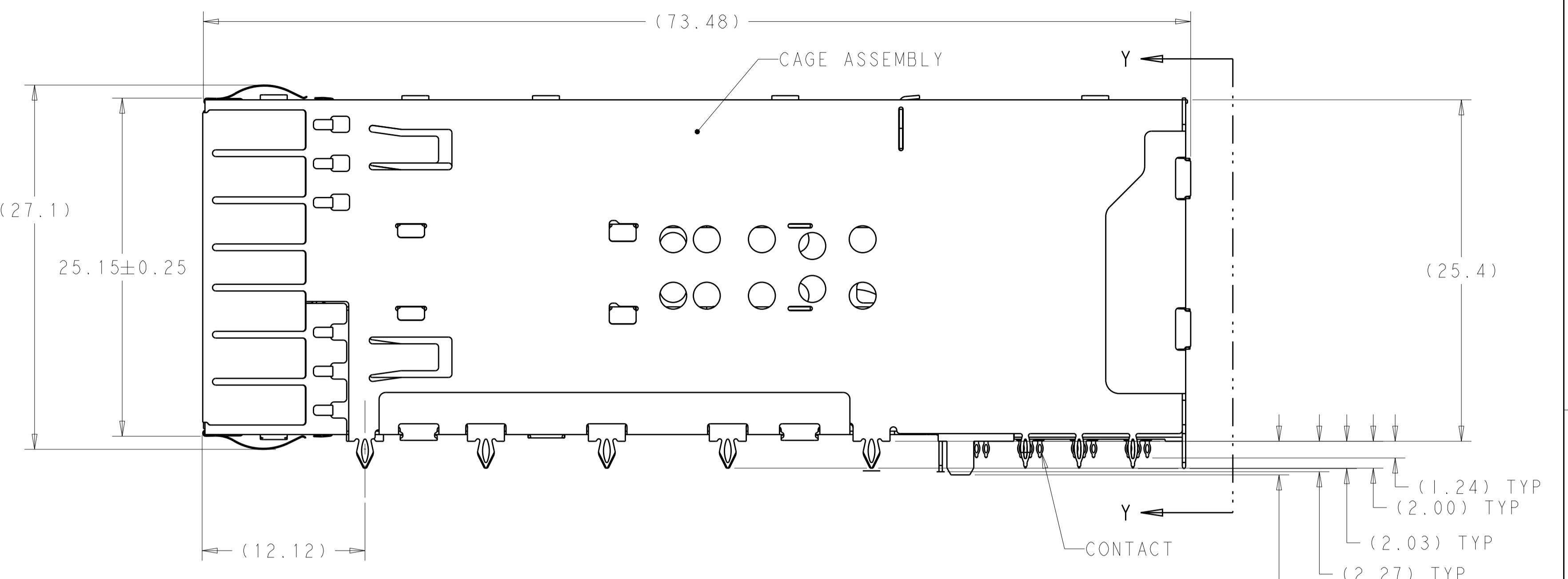
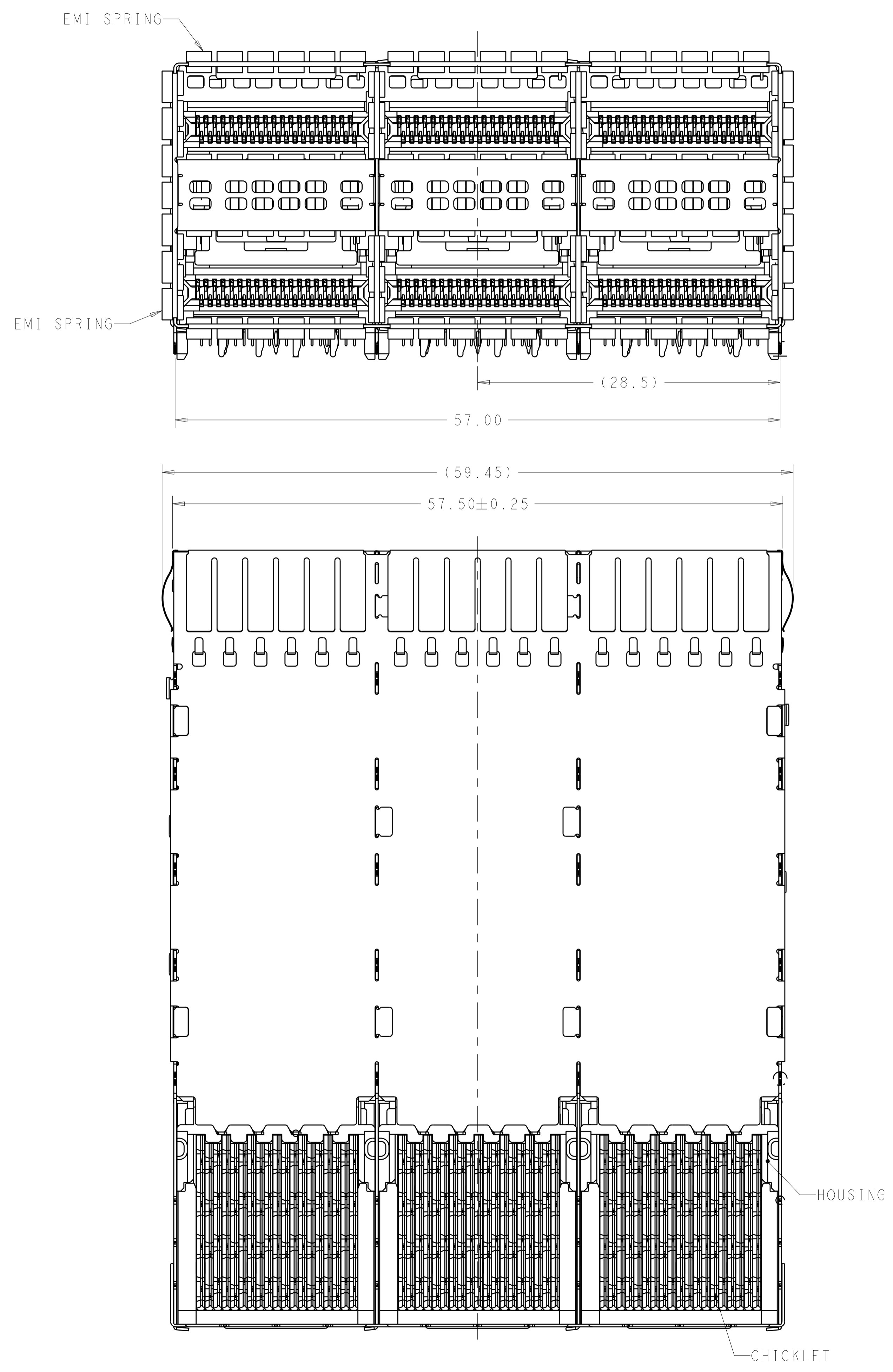


LOC		DIST		REVISIONS			
GP	00	P	LTN	DESCRIPTION	DATE	DWN	APVD
		2		REVISED	18AUG2013	JY	AC
		3		REVISED	08FEB2014	KD	JY
		4		REVISED THE DRAFT	13OCT2014	TX	JY
		7		ADDED NEW DASH NUMBER	25NOV2015	TX	SH



- MATERIALS:  
 CAGE ASSEMBLY- NICKEL SILVER ALLOY PER ASTM B 122.  
 EMI SPRING- COPPER ALLOY, NICKEL PLATED.  
 HOUSING- POLYESTER LCP WITH 94 V-0  
 CHICKLET- POLYESTER LCP WITH 94 V-0  
 CONTACT- COPPER ALLOY.  
 LIGHTPIPE- POLYCARBONATE
- CONTACT FINISH: 0.76µm GOLD ON MATING END, 1.25µm TIN ON SOLDER TAIL, ALL OVER 1.27µm NICKEL.
- DATUM AND BASIC DIMENSION ESTABLISHED BY CUSTOMER.
- MINIMUM PCB THICKNESS OF 1.57.
- THE ENTIRE AREA OF THE CONNECTOR FOOTPRINT, INDICATED BY THE DASHED LINE, TO BE CONSIDERED THE KEEPOUT AREA FOR COMPONENTS.
- CROSS-HATCHED AREAS REPRESENT ZONES ON THE PCB THAT COME IN CONTACT WITH OR BE IN CLOSE PROXIMITY TO THE PLASTIC HOUSING OR THE CONNECTOR CAGE. INDICATED AREAS TO BE CONSIDERED TRACE FREE.
- PART NUMBER AND DATE CODE MADE IN APPROXIMATE AREA SHOWN.
- CONTACT FINISH: 0.08µm MINIMUM GOLD OVER 0.68µm PALLADIUM-NICKEL ON MATING END, 1.25µm TIN ON SOLDER TAIL, ALL OVER 1.27µm NICKEL.
- REMOVE THE PCB HOLES FOR 1-2227671-0 FOR BELLY TO BELLY APPLICATION
- HATCHED AREA IS PLACEMENT ZONE FOR LED. LED SHOULD BE CENTERED WITHIN ZONE. RECOMMEND 0805 PACKAGE

CONTACT FINISH	DESCRIPTION	PART NUMBER
2	ALL INDICATOR DOWN, 4 LP	1-2227671-2
2	DUAL LEFT INDICATOR UP, 4 LP	1-2227671-1
2	LEFT INDICATOR UP, 2 LP	1-2227671-0
2	LEFT INDICATOR DOWN, 4 LP	2227671-9
2	LEFT INDICATOR UP, 4 LP	2227671-8
2	ALL INDICATOR UP, 4 LP	2227671-7
8	LEFT INDICATOR DOWN	2227671-6
8	LEFT INDICATOR UP	2227671-5
8	NO LIGHTPIPE	2227671-4
2	LEFT INDICATOR DOWN	2227671-3
2	LEFT INDICATOR UP	2227671-2
2	NO LIGHTPIPE	2227671-1

THIS DRAWING IS A CONTROLLED DOCUMENT. DWN: SHIRK 18JAN2013  
 CH: SZCZESNY 18JAN2013  
 APVD: SZCZESNY

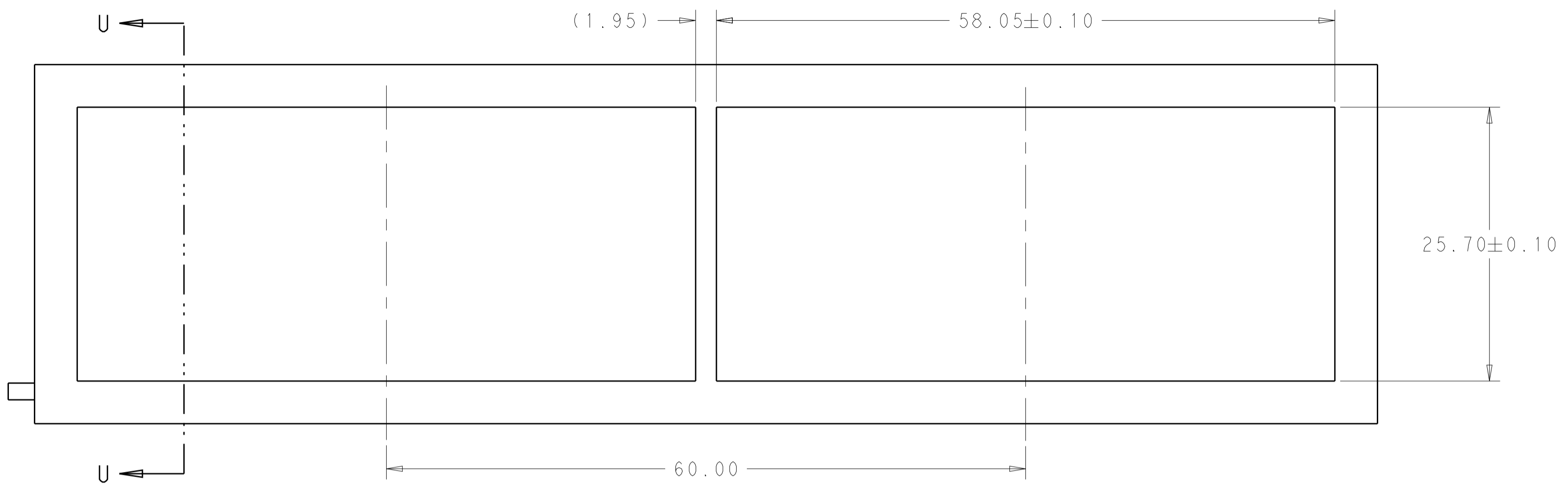
DIMENSIONS: mm  
 TOLERANCES UNLESS OTHERWISE SPECIFIED:  
 0 PLC ±  
 1 PLC ±0.25  
 2 PLC ±0.15  
 3 PLC ±  
 4 PLC ±  
 ANGLES ±  
 FINISH ±

MATERIAL: SEE NOTE 1  
 FINISH: SEE NOTE 2

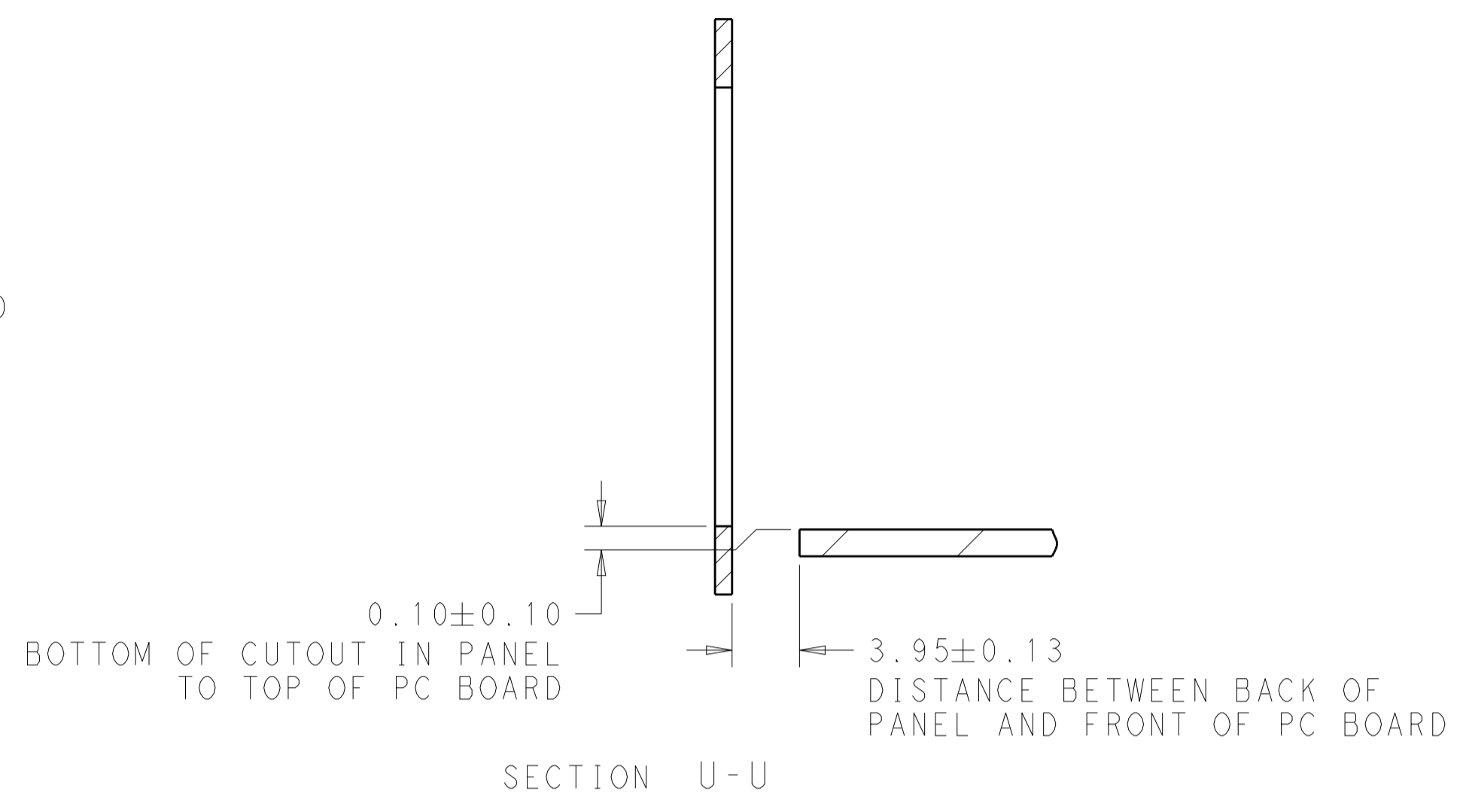
PRODUCT SPEC: CAGE AND CONNECTOR ASSEMBLY WITH EMI SPRING, THRU BEZEL, 2X3, ZQSFP+ STACKED  
 APPLICATION SPEC: A100779C=2227671  
 SIZE: CAGE CODE DRAWING NO: 100779C=2227671  
 WEIGHT: -  
 CUSTOMER DRAWING: SCALE 4:1 SHEET 1 OF 6 REV 7

STE TE Connectivity PRELIMINARY

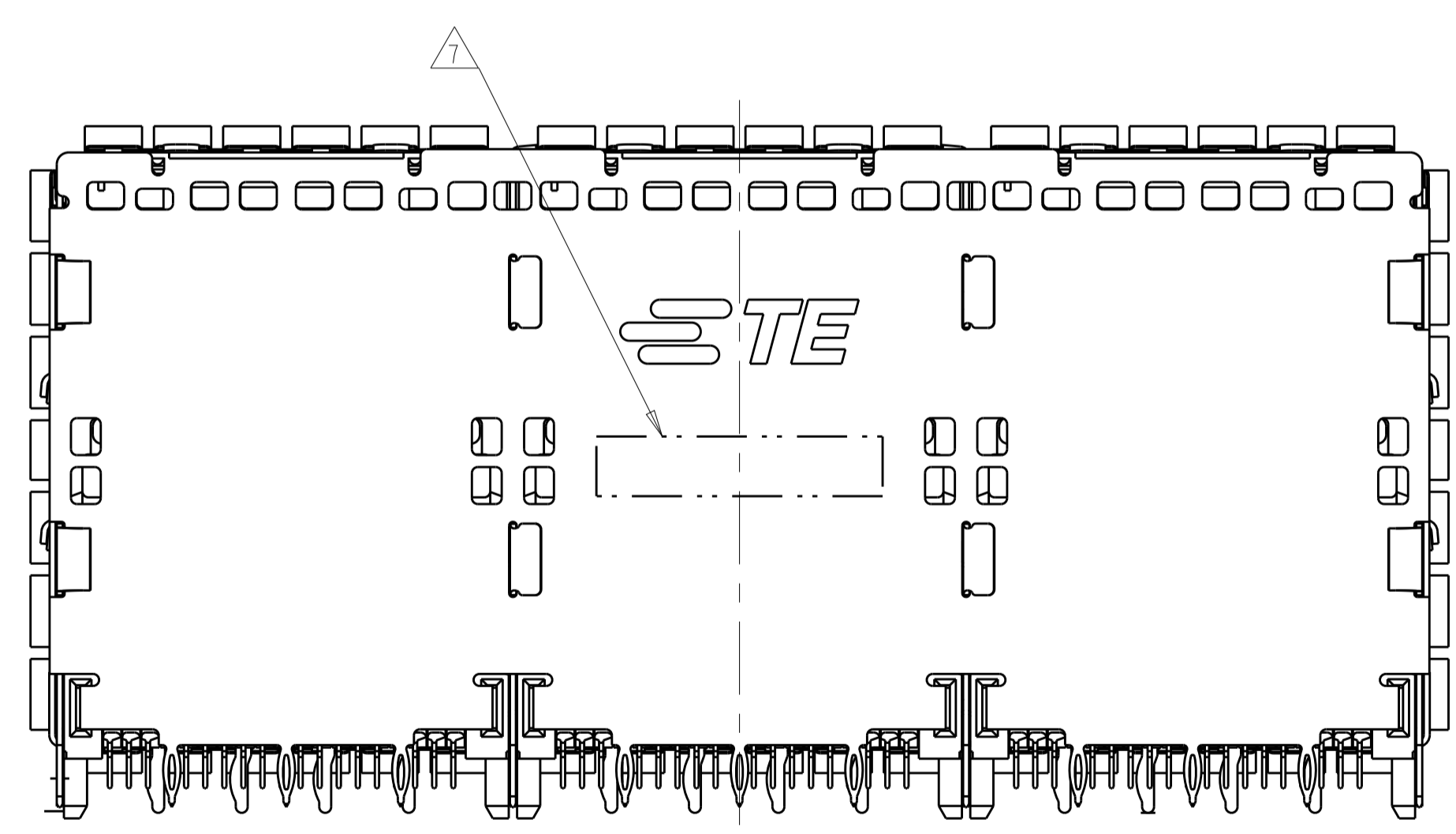
LOC		DIST		REVISIONS			
GP	00	P	LTN	DESCRIPTION	DATE	DWN	APVD
		-		SEE SHEET 1	-	-	-



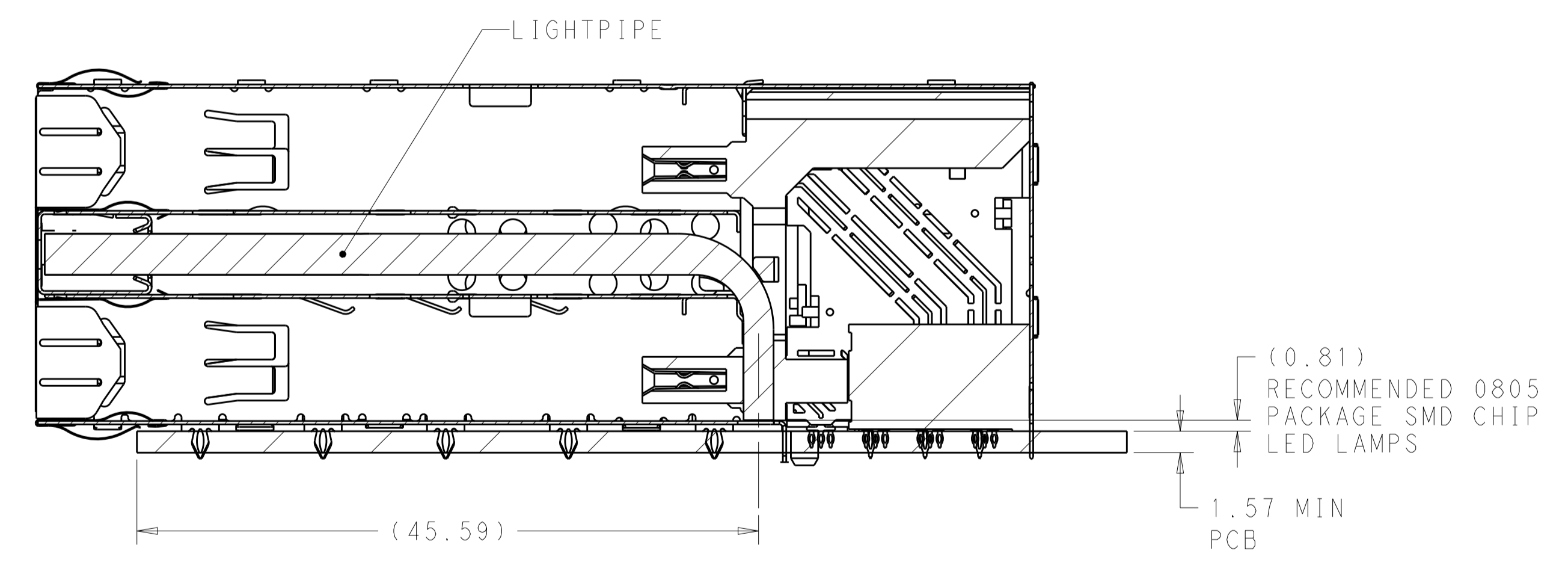
RECOMMENDED PANEL CUTOUT  
 AND PC BOARD, PANEL POSITION  
 SCALE 3:1



SECTION U-U



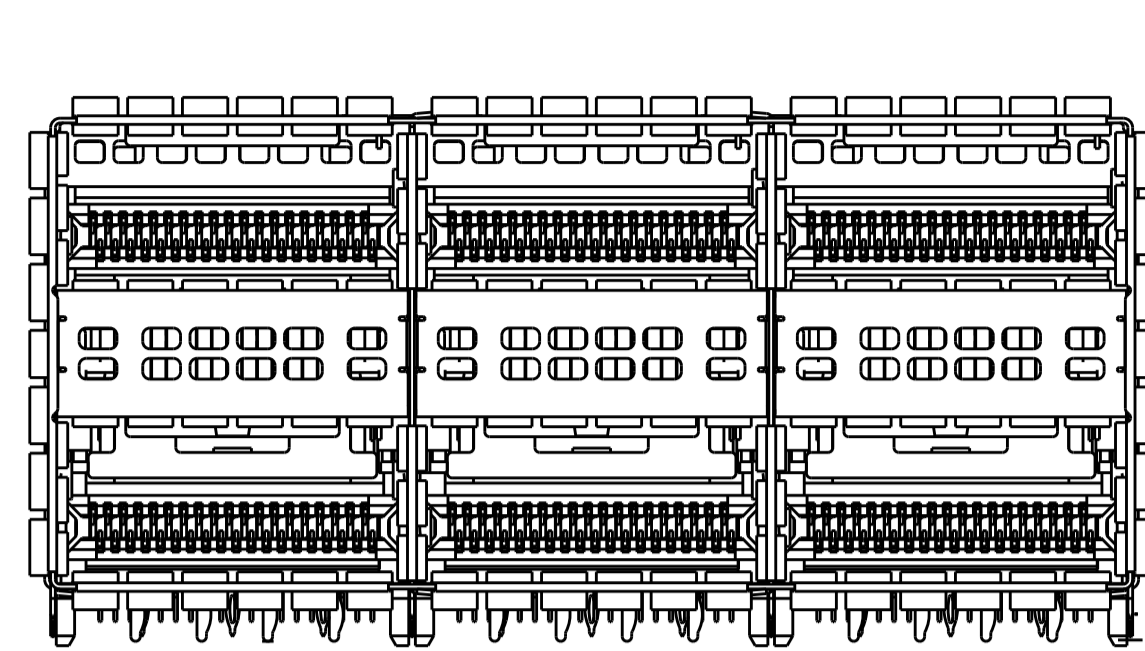
VIEW Y-Y



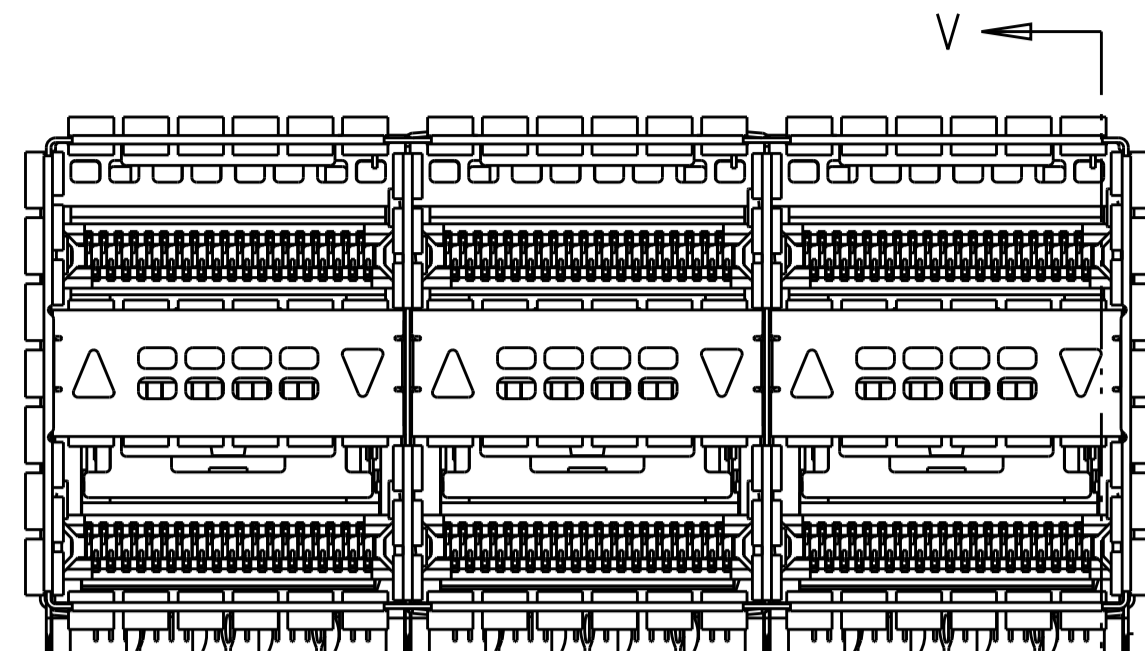
SECTION V-V  
 SCALE 3:1

THIS DRAWING IS A CONTROLLED DOCUMENT.		DWN M. SHIRK 18JAN2013	TE Connectivity
DIMENSIONS: mm		CHK D. SZCZESNY 18JAN2013	
TOLERANCES UNLESS OTHERWISE SPECIFIED:		APVD	NAME
0 PLC ±	1 PLC ±0.25	PRODUCT SPEC	CAGE AND CONNECTOR ASSEMBLY,
2 PLC ±0.15	3 PLC ±	APPLICATION SPEC	WITH EMI SPRING, THRU BEZEL, 2X3,
4 PLC ±	ANGLES ±	WEIGHT	ZQSFP+ STACKED
MATERIAL	FINISH	SIZE	CAGE CODE
SEE NOTE 1	SEE NOTE 2	A100779	DRAWING NO
CUSTOMER DRAWING		SCALE	RESTRICTED TO
		4:1	SHEET 2 OF 6
			REV 7

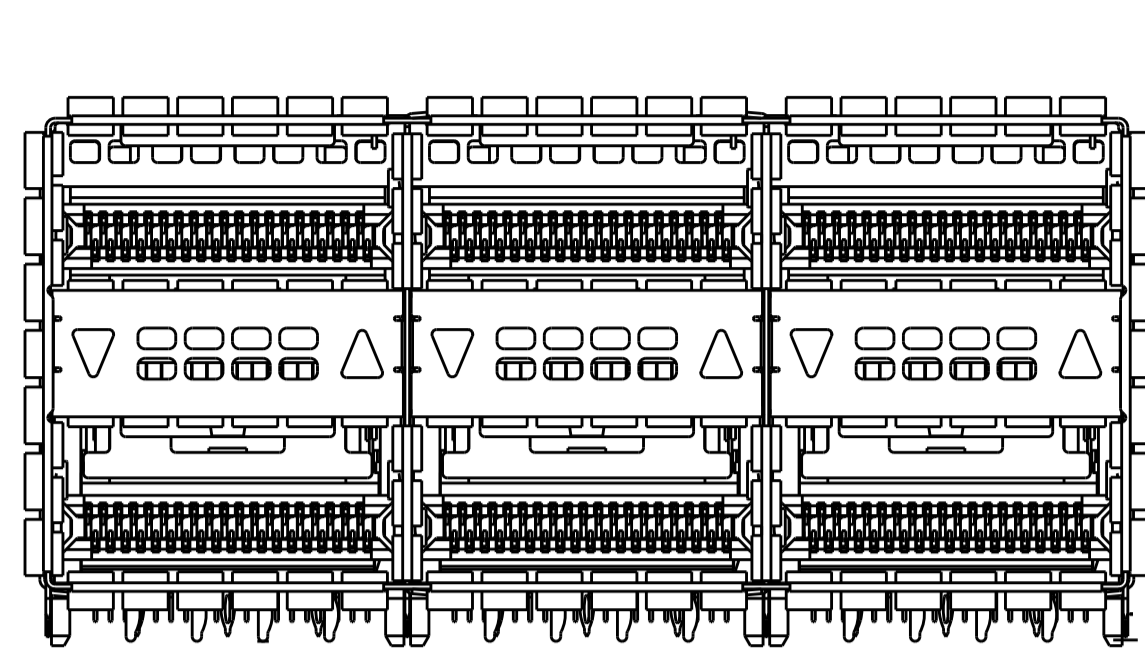
LOC	DIST	REV	DATE	BY	APPV
GP	00				
REVISIONS			DESCRIPTION	DATE	OWN
			SEE SHEET 1		



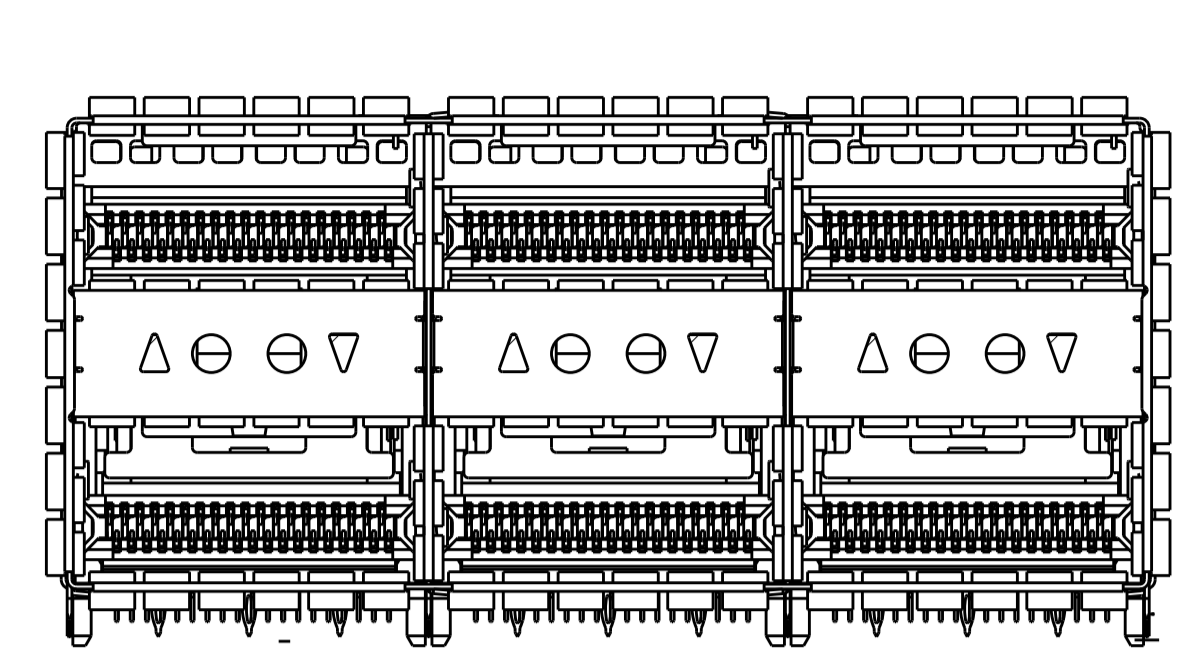
2227671-1/4  
NO LIGHTPIPE IN ASSEMBLY  
SCALE 5:2



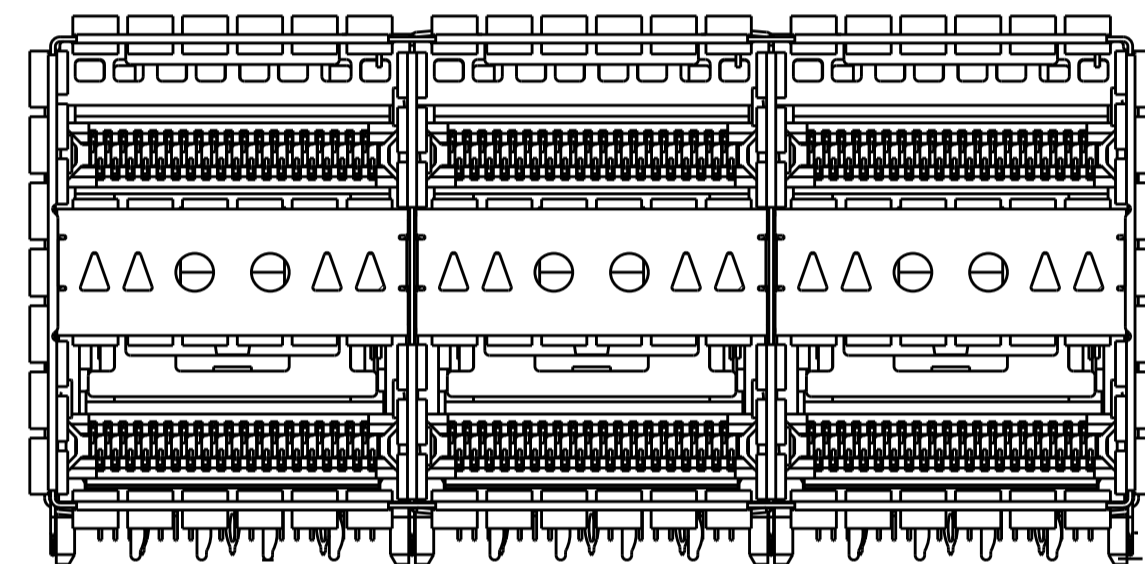
2227671-2/5  
LEFT LIGHTPIPE INDICATOR  
POINTING TO UPPER PORT  
SCALE 5:2



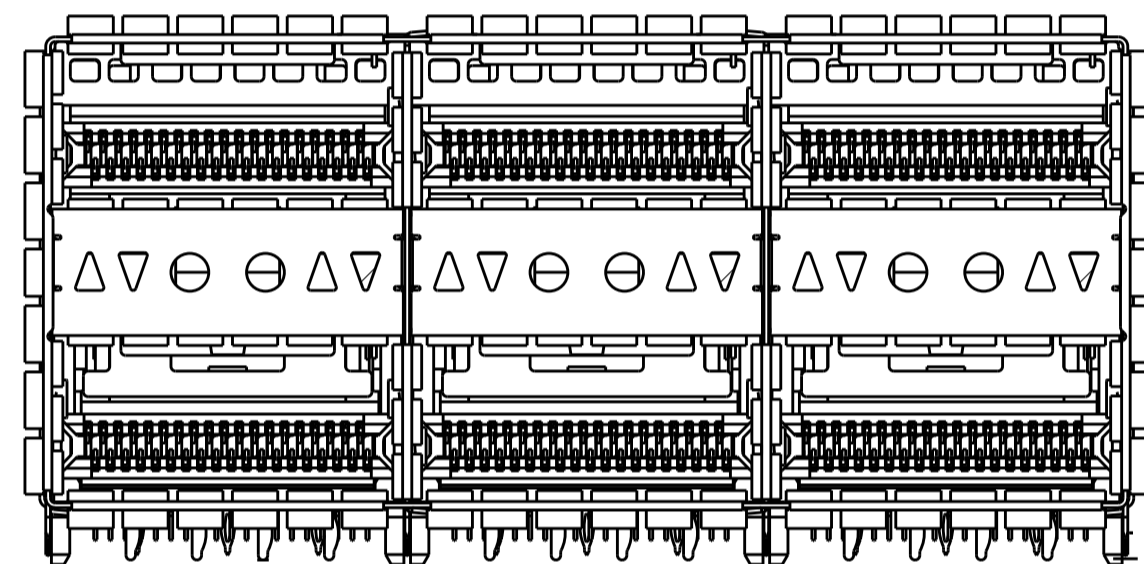
2227671-3/6  
LEFT LIGHTPIPE INDICATOR  
POINTING TO LOWER PORT  
SCALE 5:2



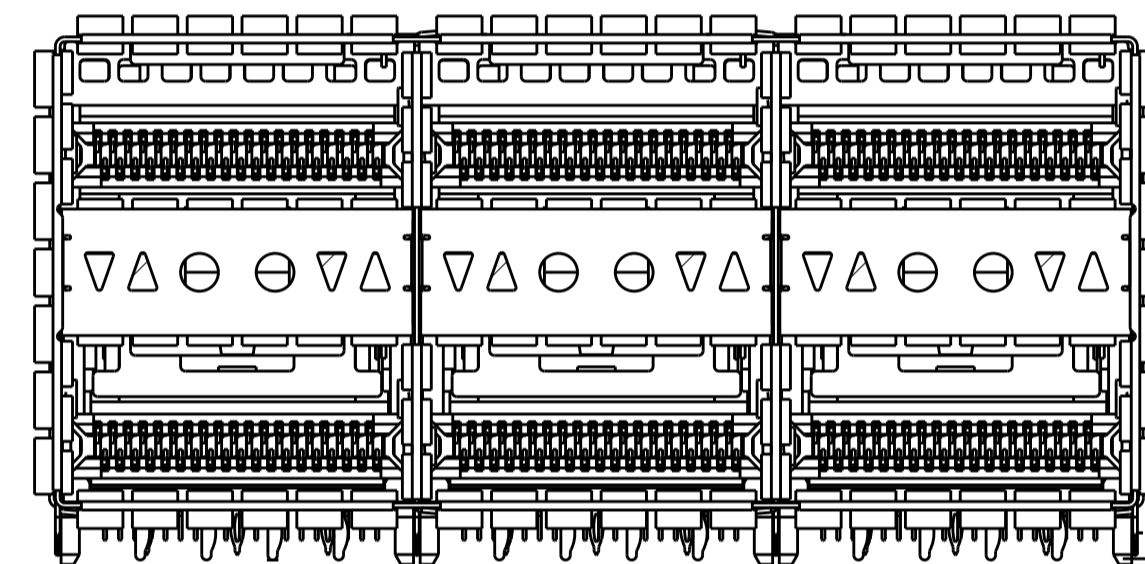
1-2227671-0  
LEFT INDICATOR UP, 2LP  
SCALE 5:2



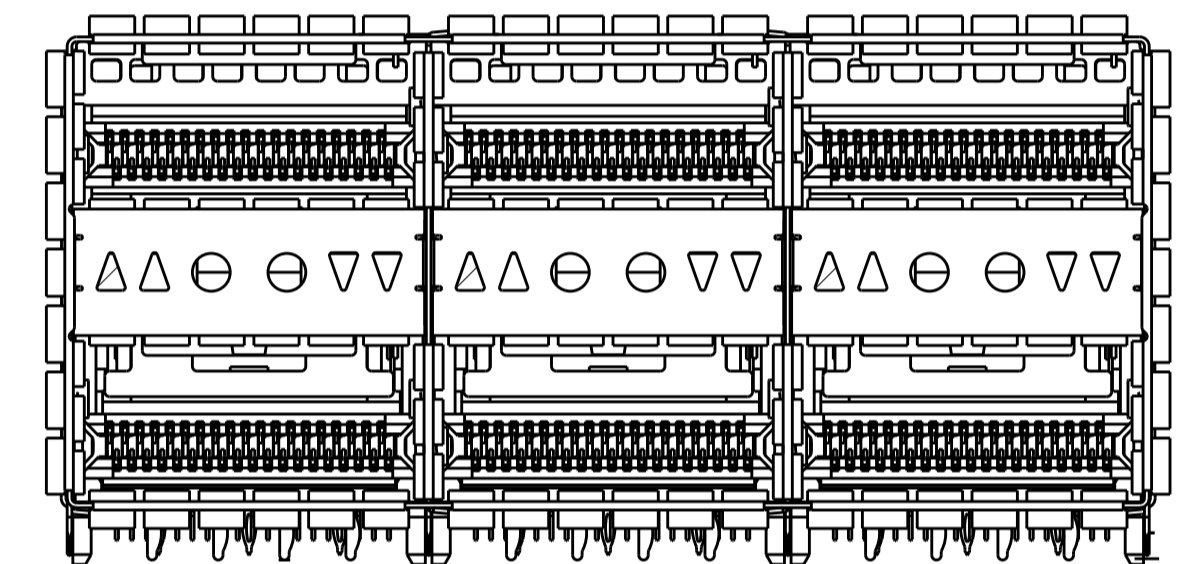
2227671-7  
ALL INDICATOR UP, 4LP  
SCALE 5:2



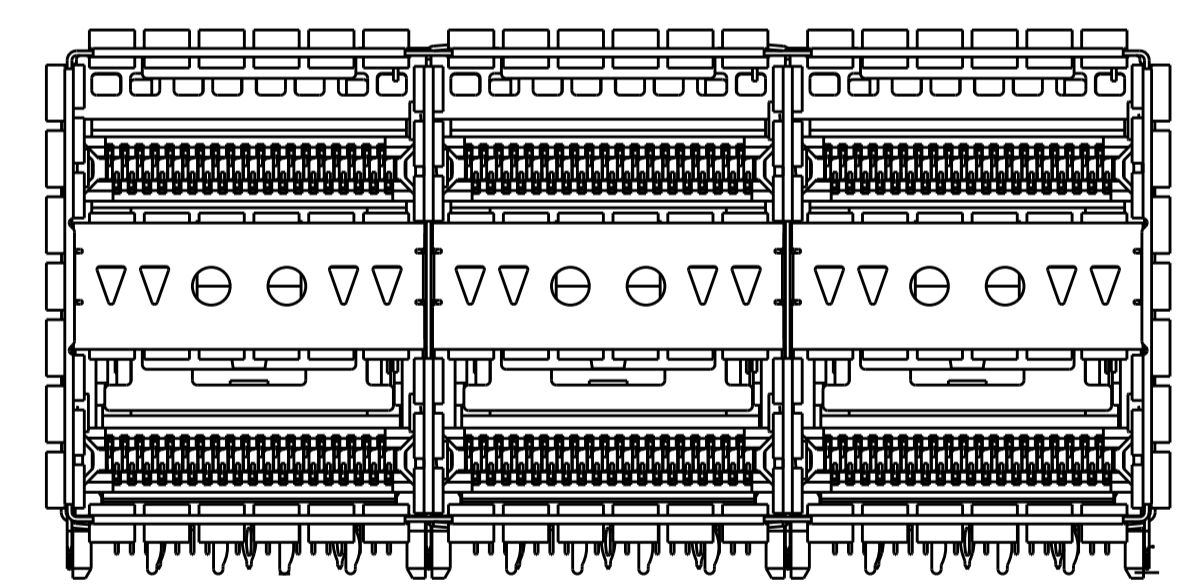
2227671-8  
LEFT INDICATOR UP, 4LP  
SCALE 5:2



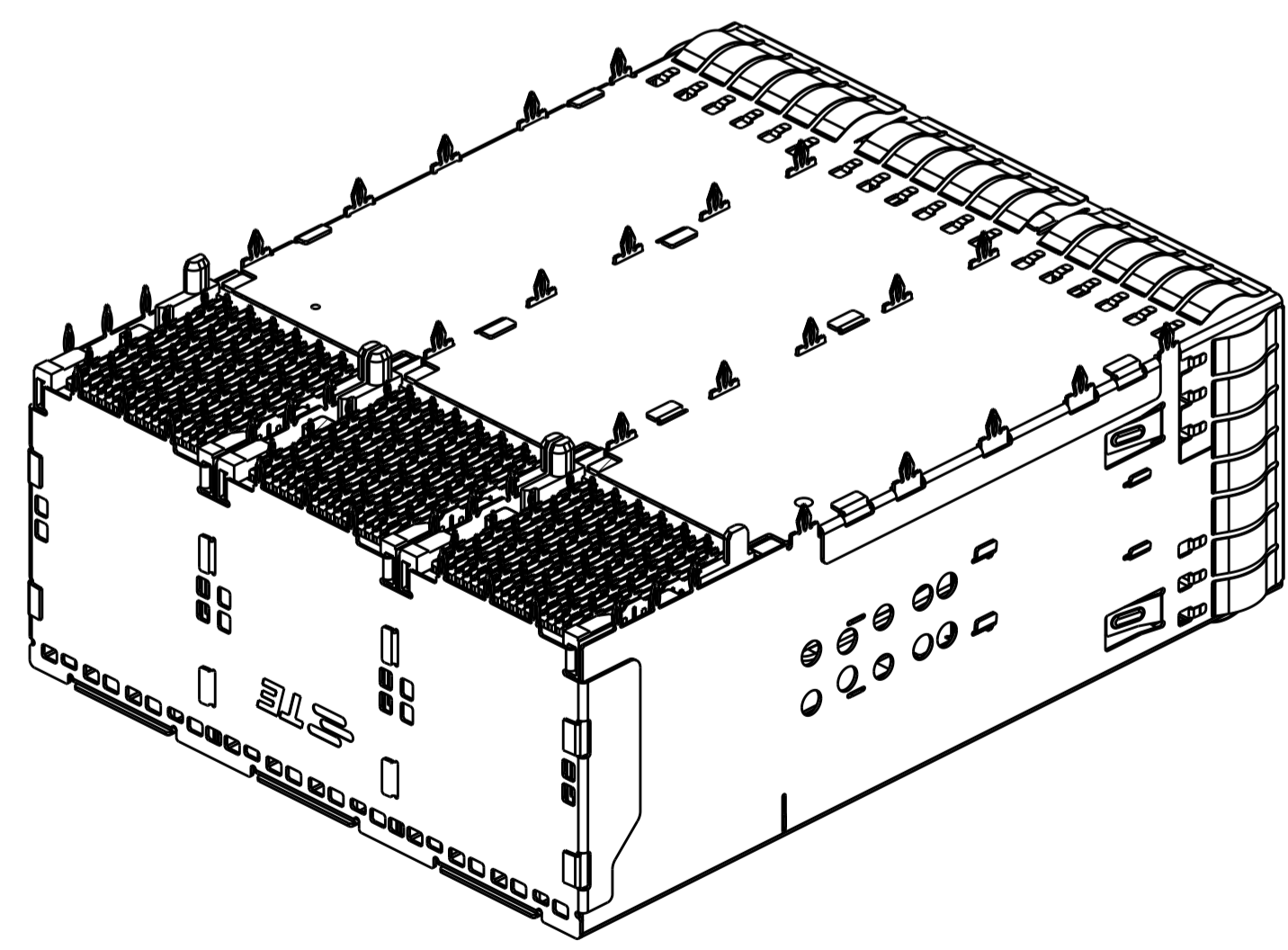
2227671-9  
LEFT INDICATOR DOWN, 4LP  
SCALE 5:2



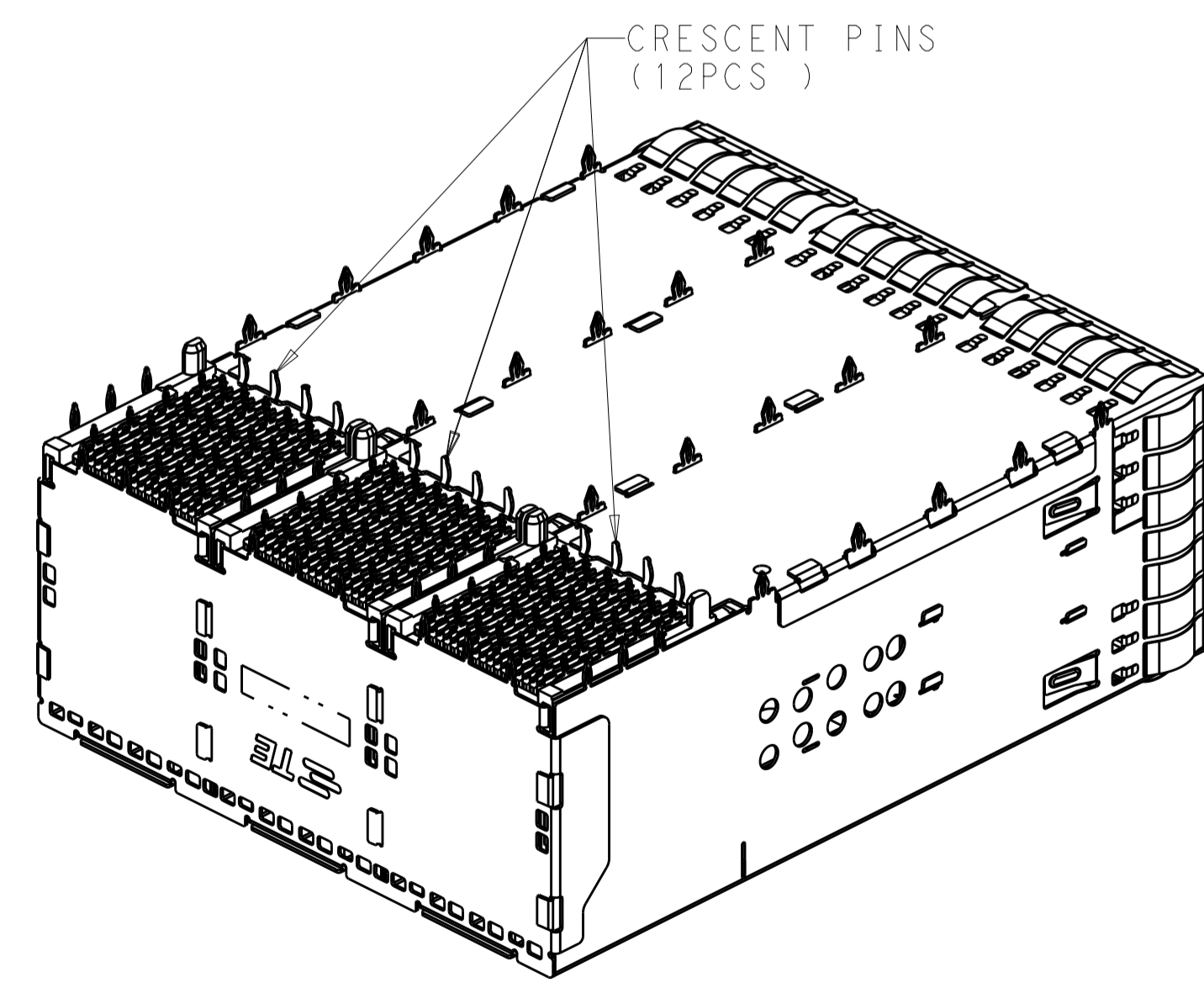
1-2227671-1  
DUAL LEFT INDICATOR UP, 4 LP  
SCALE 5:2



1-2227671-2  
ALL INDICATOR DOWN, 4 LP  
SCALE 5:2



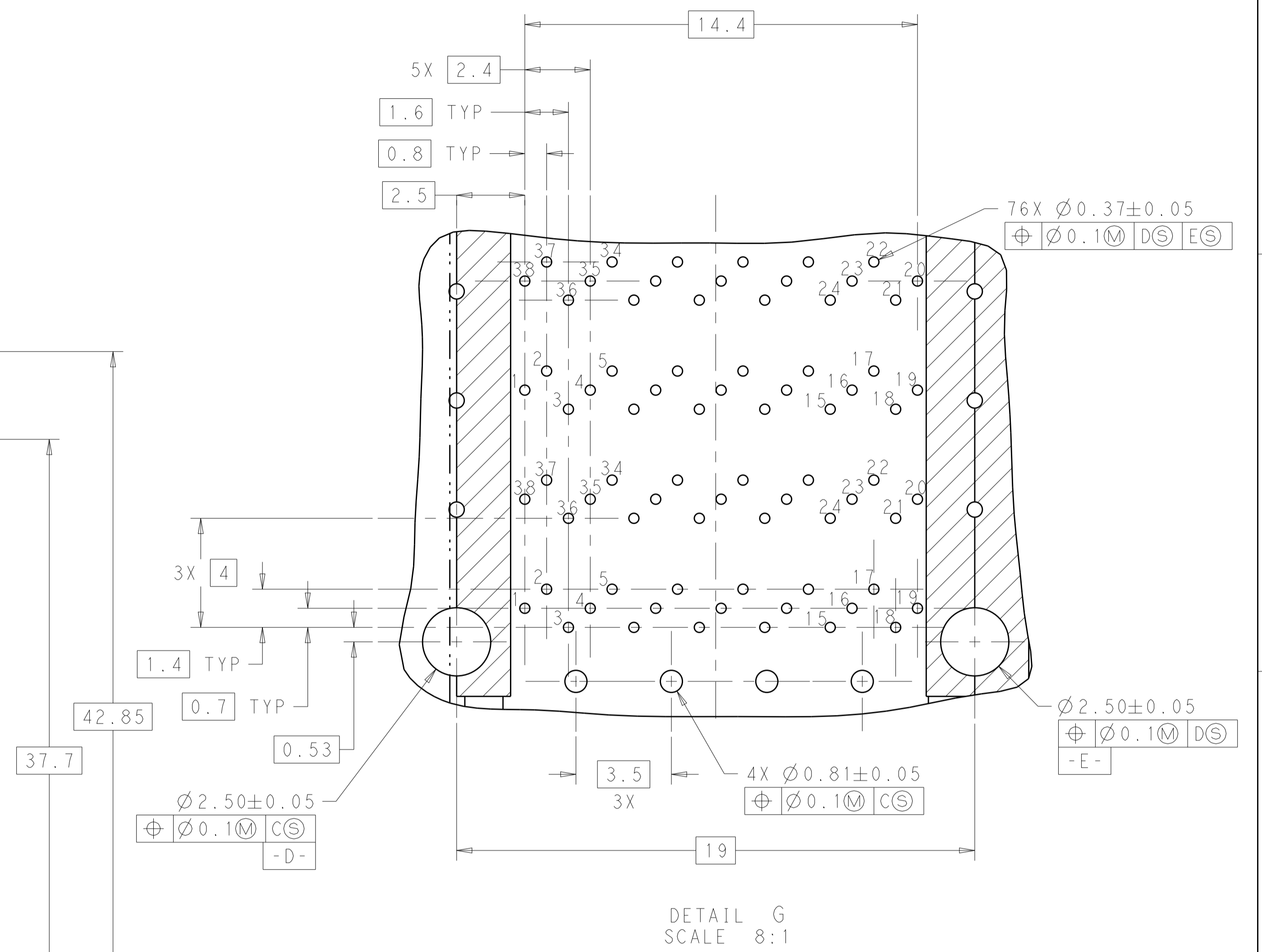
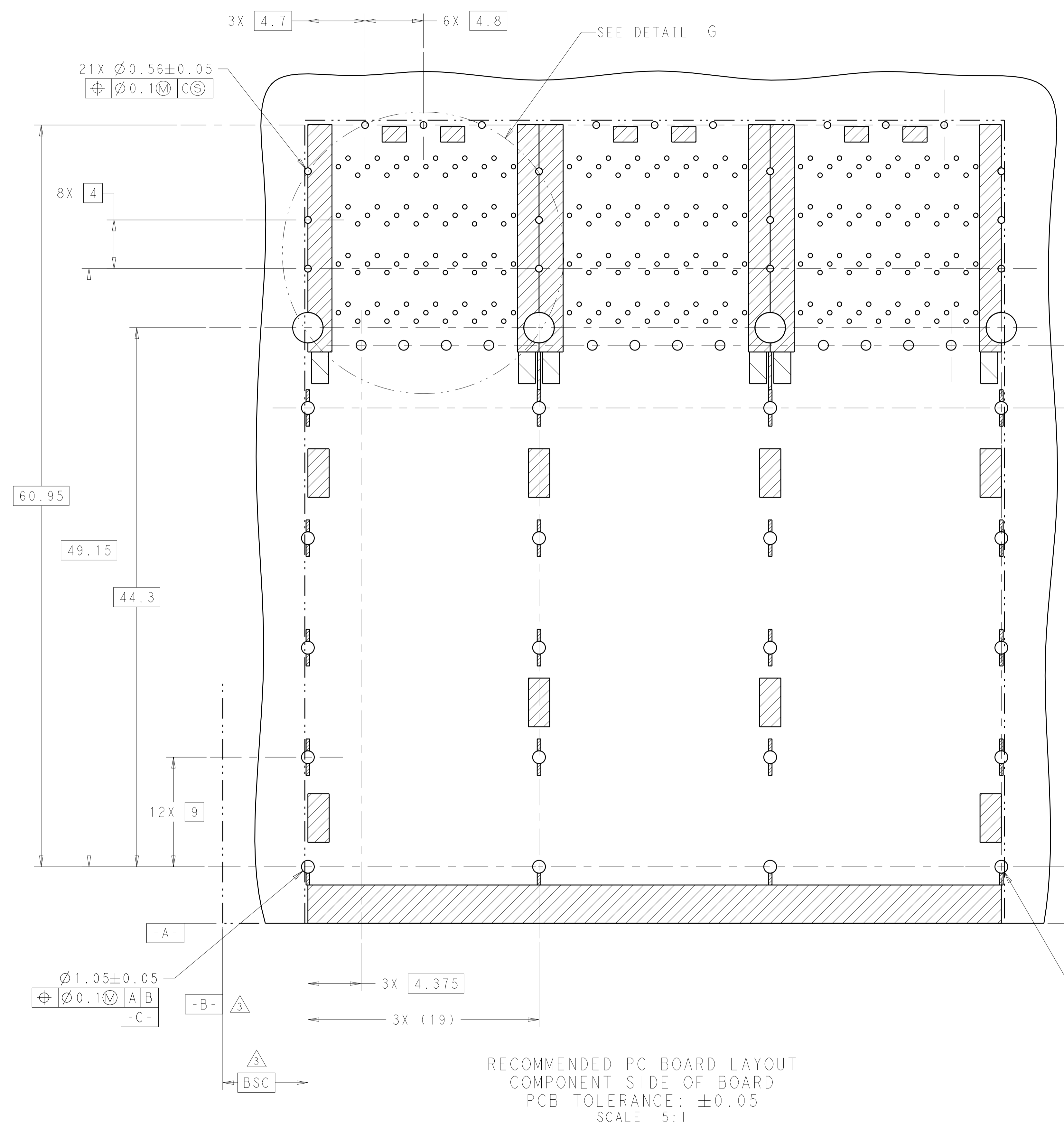
ONLY 1-2227671-0 AS SHOWN WITHOUT CRESCENT PINS  
SCALE 2:1



2227671-1 TO 2227671-9, 1-2227671-1  
AND 1-2227671-2 AS SHOWN WITH CRESCENT PINS  
SCALE 2:1

THIS DRAWING IS A CONTROLLED DOCUMENT.		OWN: M. SHIRK 18JAN2013	TE Connectivity
DIMENSIONS: mm		CHK: D. SZCZESNY 18JAN2013	
TOLERANCES UNLESS OTHERWISE SPECIFIED: 0 PLC ± 1 PLC ±0.25 2 PLC ±0.15 3 PLC ± 4 PLC ± ANGLES ± FINISH ±		PRODUCT SPEC APPLICATION SPEC WEIGHT CUSTOMER DRAWING	NAME: CAGE AND CONNECTOR ASSEMBLY, WITH EMI SPRING, THRU BEZEL, 2X3, ZQSFP+ STACKED SIZE: A1 CAGE CODE: 00779 DRAWING NO: C=2227671 RESTRICTED TO:
MATERIAL: SEE NOTE 1		SCALE: 4:1 SHEET 3 OF 6 REV 7	

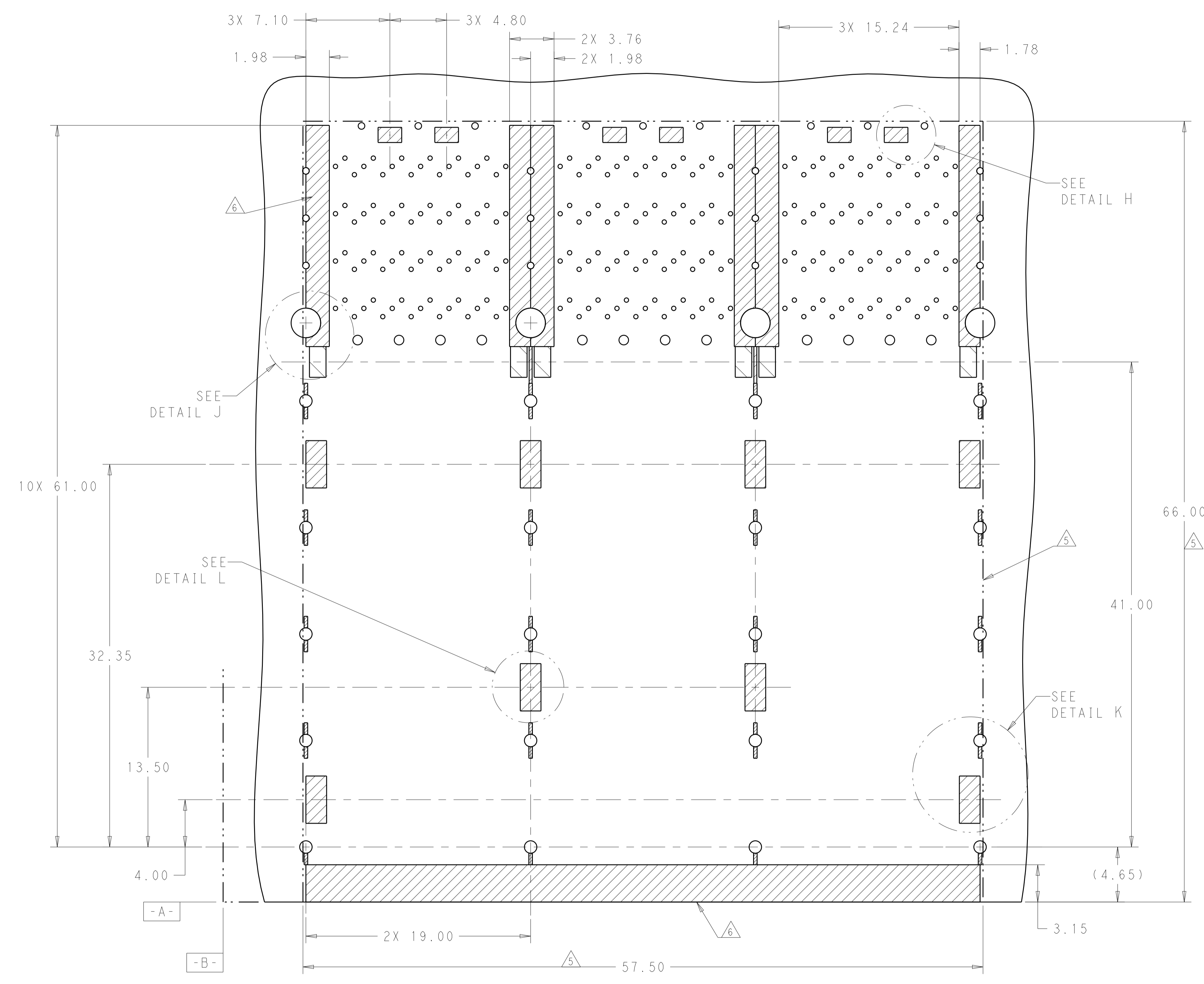
LOC	DIST	REVISIONS					
GP	00	P	LTN	DESCRIPTION	DATE	DWN	APVD
		-	-	SEE SHEET 1	-	-	-



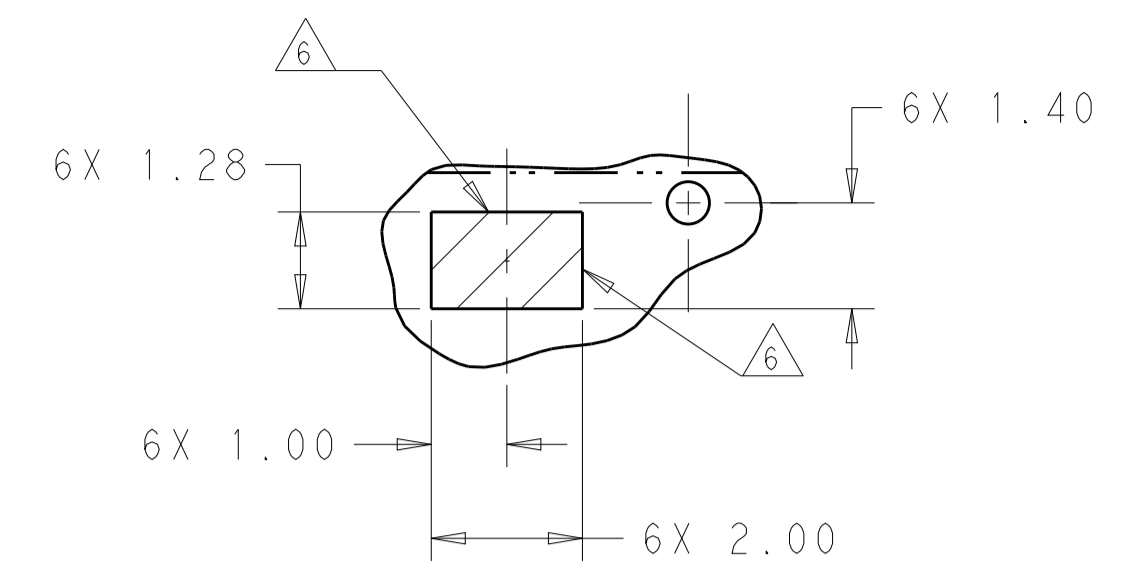
RECOMMENDED PCB BOARD LAYOUT  
 COMPONENT SIDE OF BOARD  
 PCB TOLERANCE:  $\pm 0.05$   
 SCALE 5:1

THIS DRAWING IS A CONTROLLED DOCUMENT.		DWN M. SHIRK 18JAN2013	TE Connectivity
DIMENSIONS: mm		CHK D. SZCZESNY 18JAN2013	
TOLERANCES UNLESS OTHERWISE SPECIFIED:		APVD	NAME
0 PLC	$\pm$	PRODUCT SPEC	CAGE AND CONNECTOR ASSEMBLY, WITH EMI SPRING, THRU BEZEL, 2X3, ZQSFP+ STACKED
1 PLC	$\pm 0.25$	APPLICATION SPEC	SIZE
2 PLC	$\pm 0.15$	WEIGHT	CAGE CODE
3 PLC	$\pm$	CUSTOMER DRAWING	DRAWING NO
4 PLC	$\pm$	SCALE 4:1	RESTRICTED TO
ANGLES	$\pm$	SHEET 4 OF 6	REV 7
MATERIAL	FINISH	A100779C=2227671	
SEE NOTE 1	SEE NOTE 2		

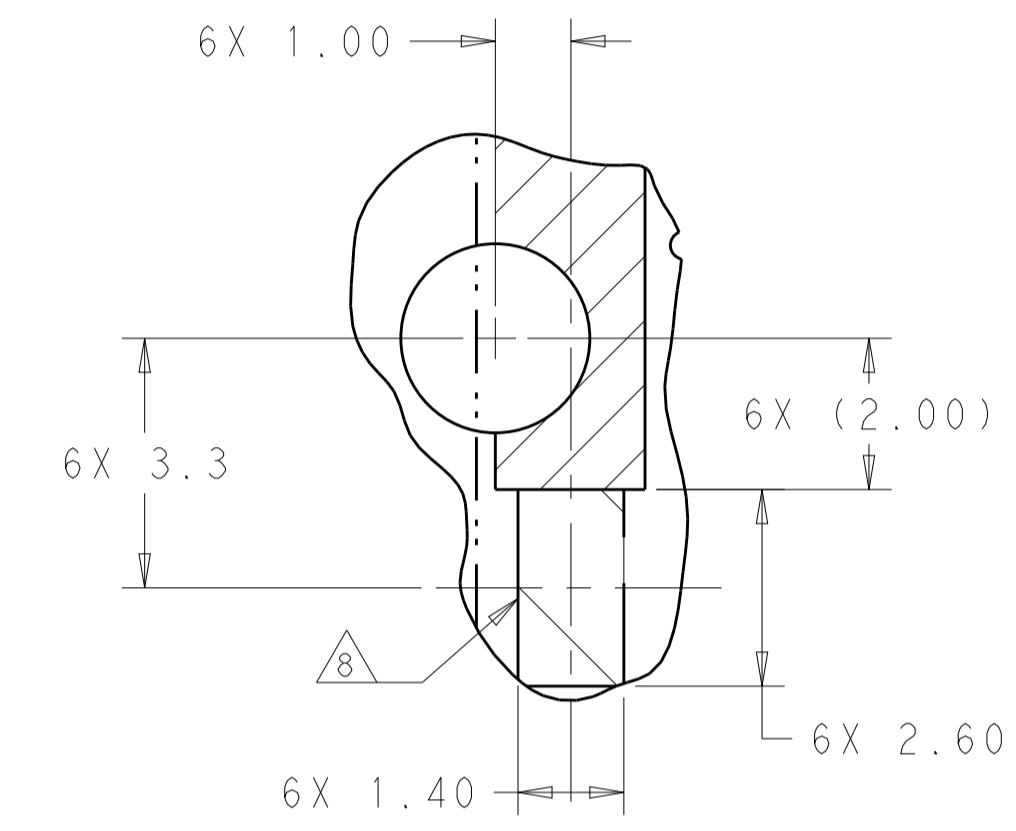
LOC		DIST		REVISONS			
GP	00	P	LTN	DESCRIPTION	DATE	DWN	APVD
				SEE SHEET 1			



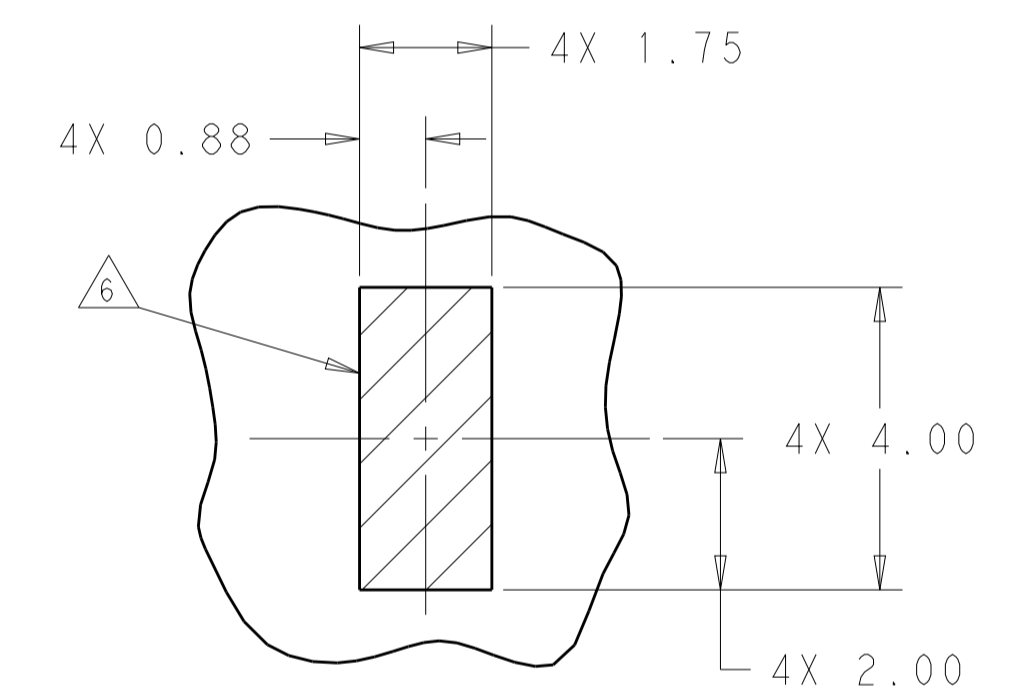
KEEPOUT AREAS COMPONENT  
 SIDE OF BOARD FOR 2 LP  
 SCALE 5:1



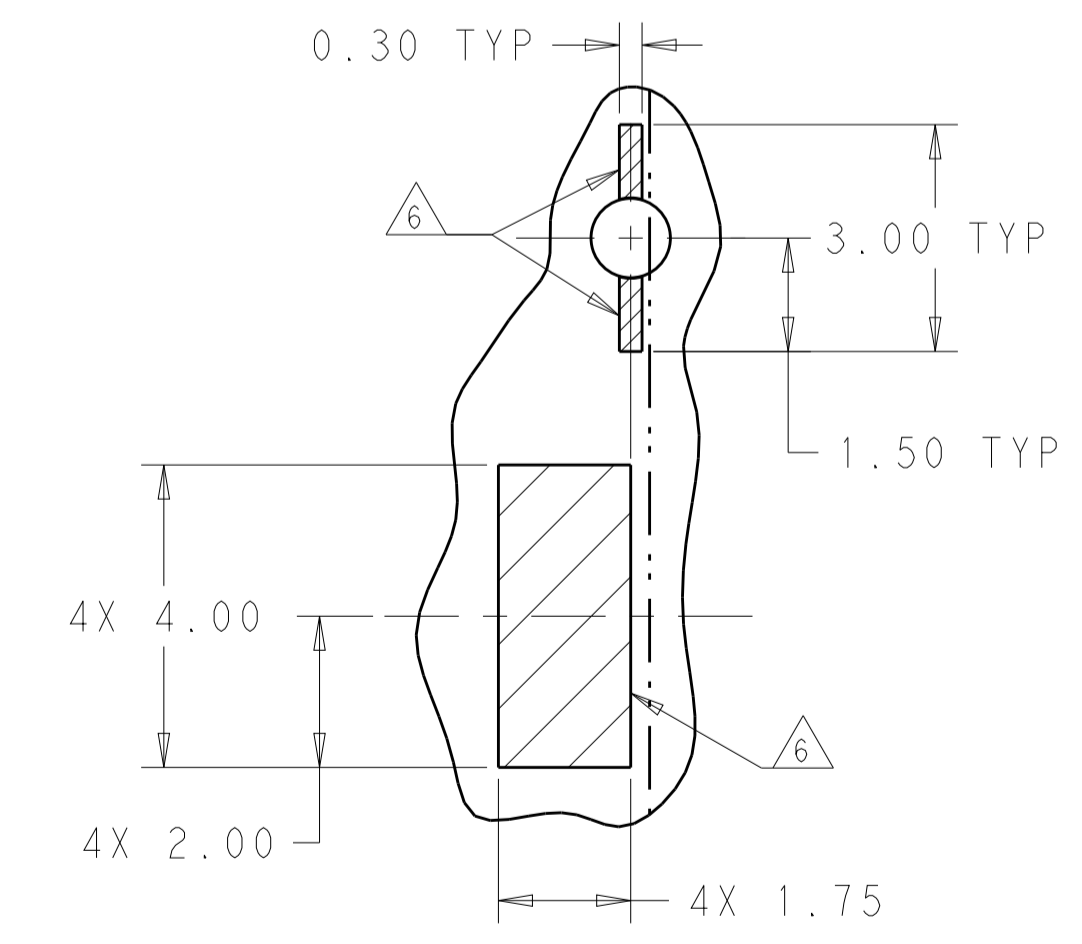
DETAIL H  
 SCALE 10:1



DETAIL J  
 LED PADS  
 SCALE 10:1



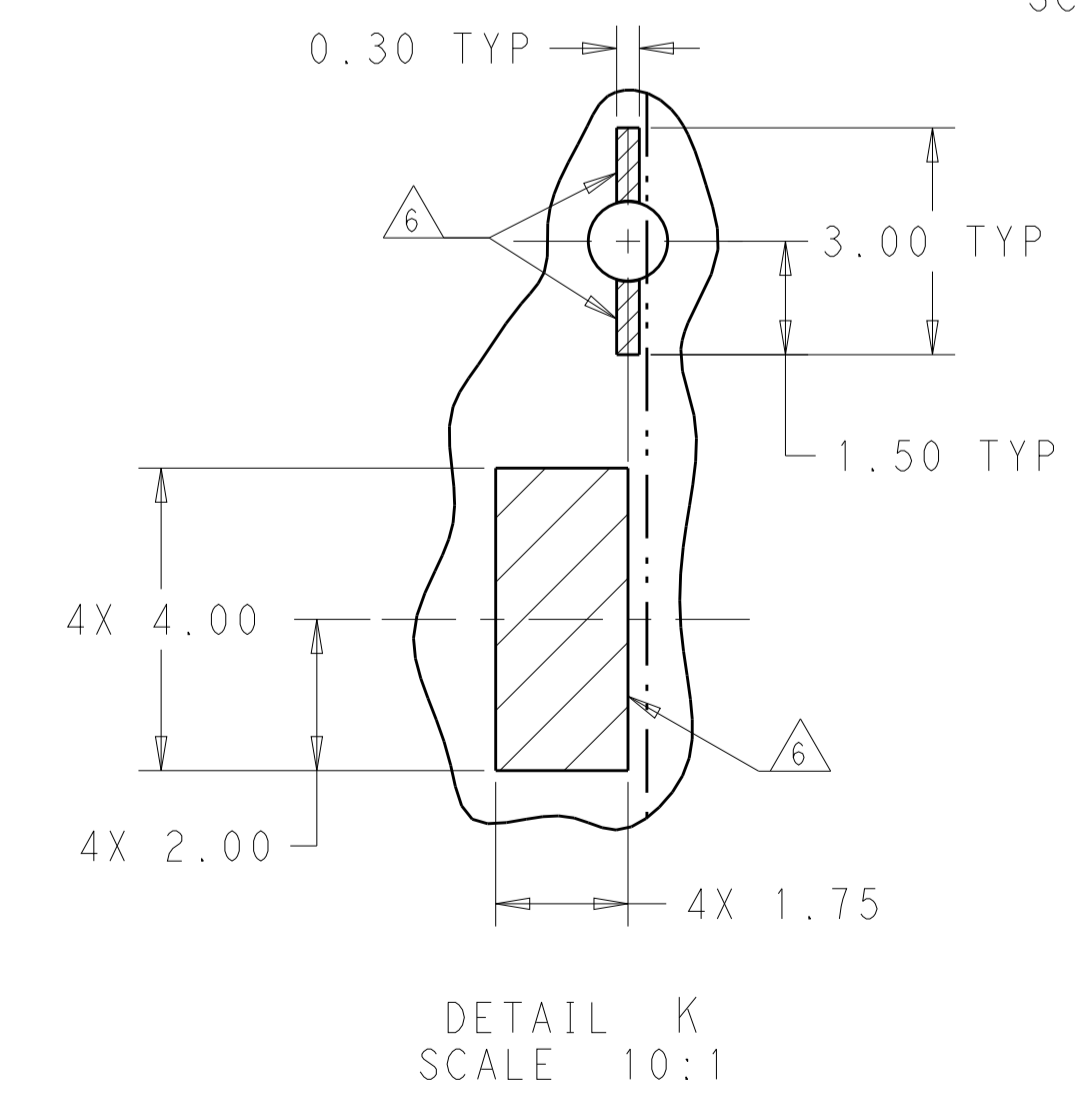
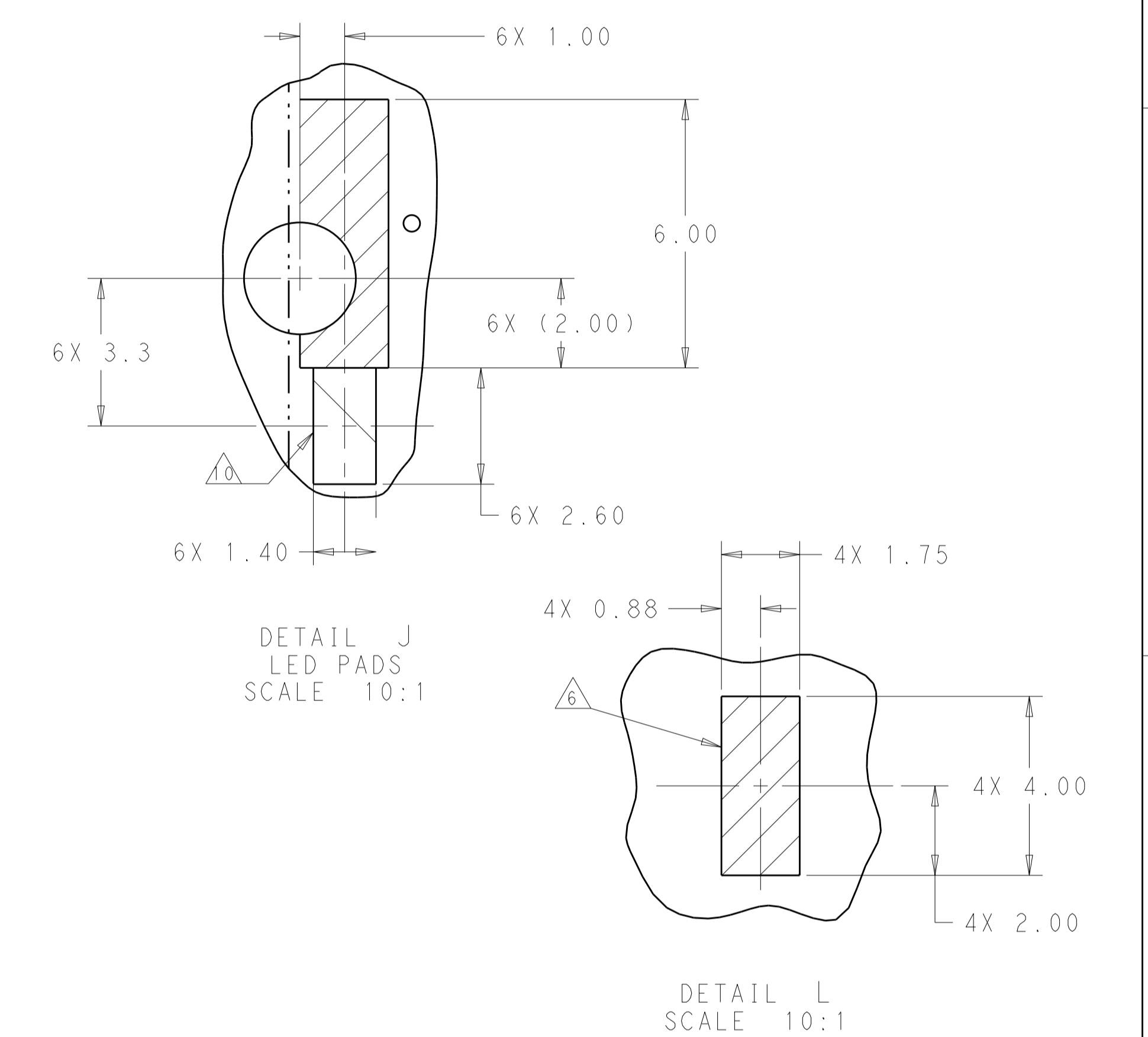
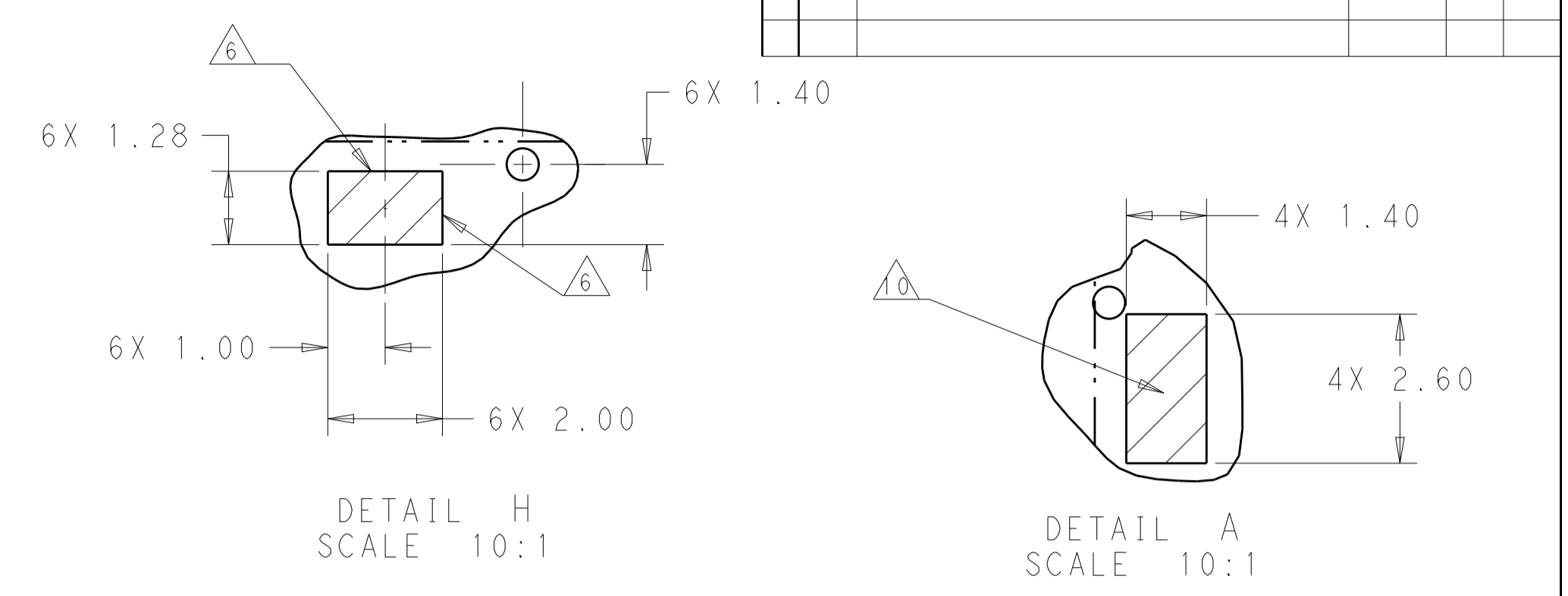
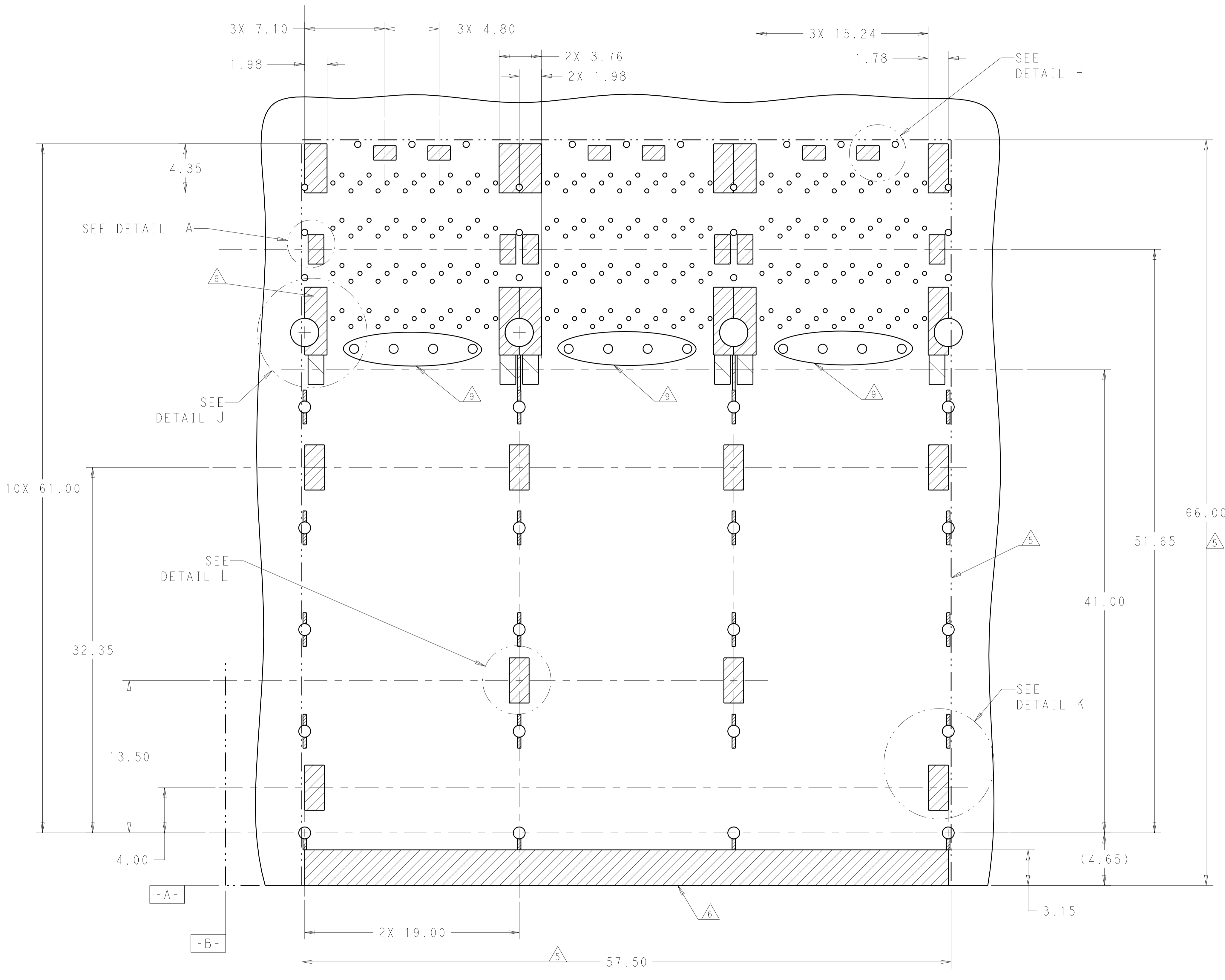
DETAIL L  
 SCALE 10:1



DETAIL K  
 SCALE 10:1

THIS DRAWING IS A CONTROLLED DOCUMENT.		DWN M. SHIRK 18JAN2013	TE Connectivity
DIMENSIONS: mm		CHK D. SZCZESNY 18JAN2013	
TOLERANCES UNLESS OTHERWISE SPECIFIED:		APVD	NAME
0 PLC ±	1 PLC ±0.25	PRODUCT SPEC	CAGE AND CONNECTOR ASSEMBLY,
2 PLC ±0.15	3 PLC ±	APPLICATION SPEC	WITH EMI SPRING, THRU BEZEL, 2X3,
4 PLC ±	ANGLES ±	WEIGHT	ZQSFP+ STACKED
MATERIAL	FINISH	SIZE	CAGE CODE DRAWING NO
SEE NOTE 1	SEE NOTE 2	A100779	C=2227671
CUSTOMER DRAWING		SCALE	4:1
		SHEET	5 OF 6
		REV	7

LOC		DIST		REVISIONS			
GP	00	P	LTN	DESCRIPTION	DATE	DMN	APVD
		-	-	SEE SHEET 1	-	-	-



KEEPOUT AREAS COMPONENT  
 SIDE OF BOARD FOR 4 LP  
 SCALE 5:1

THIS DRAWING IS A CONTROLLED DOCUMENT.		DMN M. SHIRK 18JAN2013	TE Connectivity NAME CAGE AND CONNECTOR ASSEMBLY, WITH EMI SPRING, THRU BEZEL, 2X3, ZQSFP+ STACKED
DIMENSIONS: mm		CHK D. SZCZESNY 18JAN2013	
TOLERANCES UNLESS OTHERWISE SPECIFIED:		APVD	PRODUCT SPEC
0 PLC ±	1 PLC ±0.25	APPLICATION SPEC	SIZE
2 PLC ±0.15	3 PLC ±	WEIGHT	CAGE CODE
4 PLC ±	ANGLES ±	CUSTOMER DRAWING	DRAWING NO
MATERIAL	FINISH	SCALE 1:1	RESTRICTED TO
SEE NOTE 1	SEE NOTE 2	SHEET 6 OF 6	REV 7