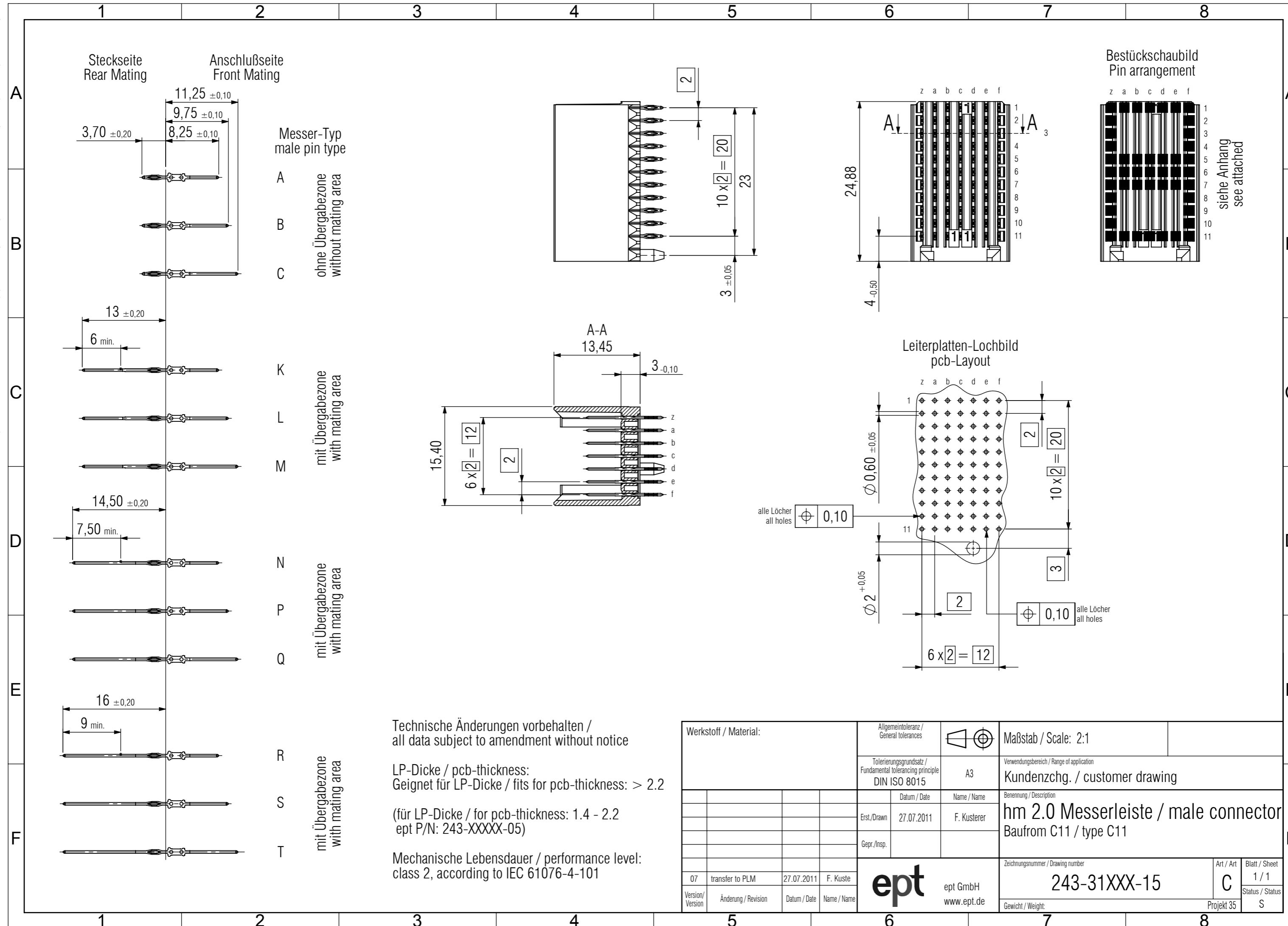


© The reproduction, distribution and utilization of this document as well as the communication of its contents to others without express authorization is prohibited. Offenders will be held liable for the payment of damages. All rights reserved in the event of the grant of a patent, utility model or design.
 © Weitergabe sowie Vervielfältigung dieses Dokuments, Verwertung und Mitteilung seines Inhalts sind verboten, soweit nicht ausdrücklich gestattet. Zuwiderhandlungen verpflichten zu Schadensersatz. Alle Rechte für den Fall der Patent-, Gebrauchsmuster- oder Geschmacksmusterertragung vorbehalten.



Technische Änderungen vorbehalten / all data subject to amendment without notice

LP-Dicke / pcb-thickness: Geignet für LP-Dicke / fits for pcb-thickness: > 2.2

(für LP-Dicke / for pcb-thickness: 1.4 - 2.2 ept P/N: 243-XXXX-05)

Mechanische Lebensdauer / performance level: class 2, according to IEC 61076-4-101

| | | | | | | | |
|-----------------------|--|--|--|---|--|--|--|
| Werkstoff / Material: | | | | Allgemeintoleranz / General tolerances | | Maßstab / Scale: 2:1 | |
| | | | | Tolerierungsgrundsatz / Fundamental tolerancing principle DIN ISO 8015 | | Verwendungsbereich / Range of application Kundenzhg. / customer drawing | |
| | | | | Datum / Date | | Benennung / Description | |
| | | | | Erst./Drawn 27.07.2011 | | hm 2.0 Messerleiste / male connector Baufrom C11 / type C11 | |
| | | | | Gepr./Insp. | | | |
| 07 transfer to PLM | | | | 27.07.2011 | | F. Kusterer | |
| Version/Version | | | | Änderung / Revision | | Datum / Date | |
| ept | | | | ept GmbH www.ept.de | | Zeichnungsnummer / Drawing number 243-31XXX-15 | |
| | | | | | | Art / Art C | |
| | | | | | | Blatt / Sheet 1 / 1 | |
| | | | | | | Status / Status S | |
| | | | | | | Gewicht / Weight: Projekt 35 | |

Bestückungsplan / Pin arrangement 243-31310-15

Type : **C**

(dimensions see drawing 243-31XXX-15)

| | z | a | b | c | d | e | f |
|----|---|---|---|---|---|---|---|
| 1 | C | A | A | A | A | A | C |
| 2 | C | A | A | A | A | A | C |
| 3 | C | A | A | A | A | A | C |
| 4 | C | A | A | A | A | A | C |
| 5 | C | A | A | A | A | A | C |
| 6 | C | A | A | A | A | A | C |
| 7 | C | A | A | A | A | A | C |
| 8 | C | A | A | A | A | A | C |
| 9 | C | A | A | A | A | A | C |
| 10 | C | A | A | A | A | A | C |
| 11 | C | A | A | A | A | A | C |

