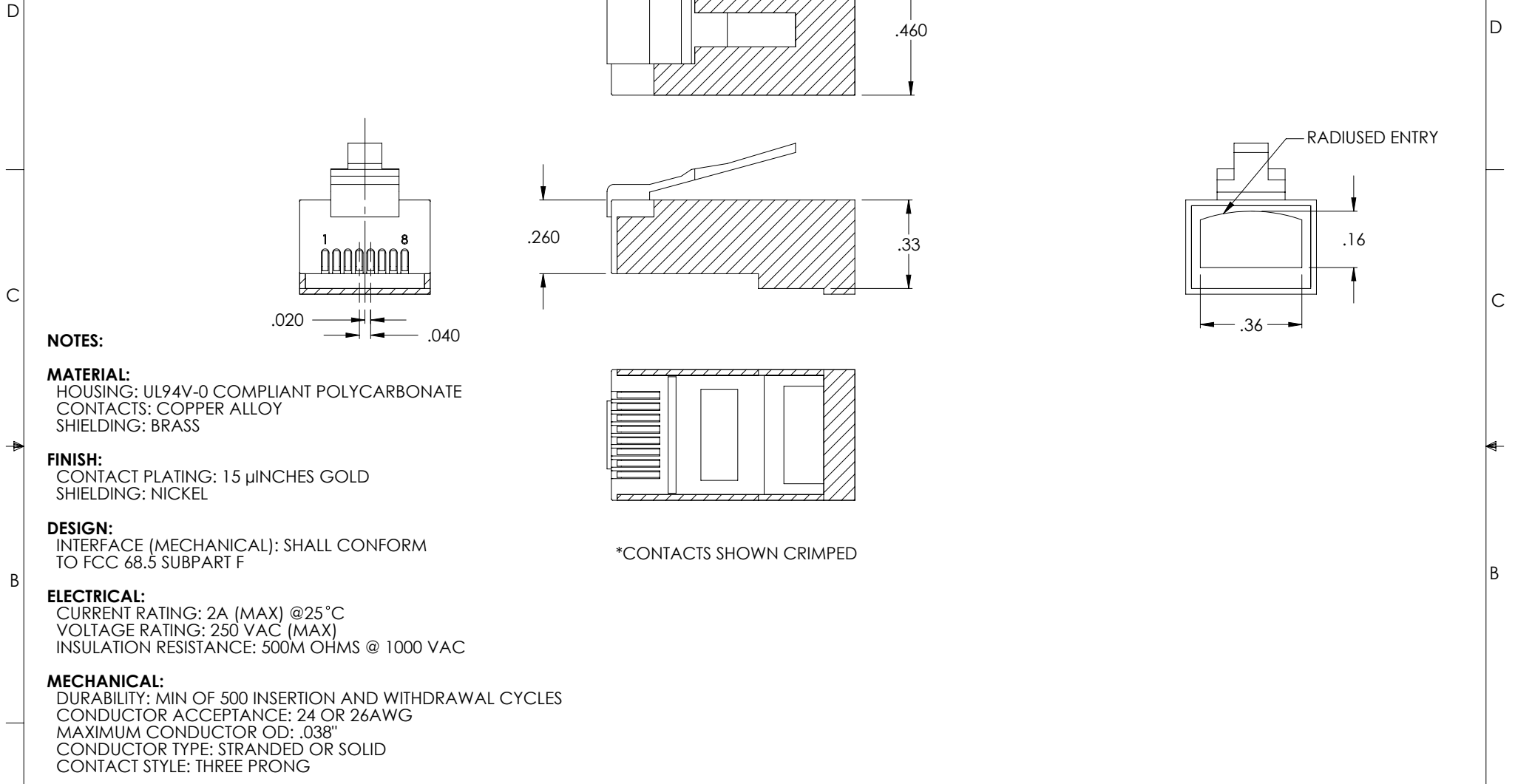


THE INFORMATION CONTAINED IN THIS DRAWING IS THE SOLE PROPERTY OF L-COM, INC. ANY REPRODUCTION IN PART OR WHOLE WITHOUT THE WRITTEN PERMISSION OF L-COM, INC. IS PROHIBITED.

REVISIONS			
REV	DESCRIPTION	DATE	APPROVED
A	REPLACES T8P8CSR-OD1	6/24/14	D. CASTRO



NOTES:

MATERIAL:
 HOUSING: UL94V-0 COMPLIANT POLYCARBONATE
 CONTACTS: COPPER ALLOY
 SHIELDING: BRASS

FINISH:
 CONTACT PLATING: 15 μINCHES GOLD
 SHIELDING: NICKEL

DESIGN:
 INTERFACE (MECHANICAL): SHALL CONFORM TO FCC 68.5 SUBPART F

ELECTRICAL:
 CURRENT RATING: 2A (MAX) @25 °C
 VOLTAGE RATING: 250 VAC (MAX)
 INSULATION RESISTANCE: 500M OHMS @ 1000 VAC

MECHANICAL:
 DURABILITY: MIN OF 500 INSERTION AND WITHDRAWAL CYCLES
 CONDUCTOR ACCEPTANCE: 24 OR 26AWG
 MAXIMUM CONDUCTOR OD: .038"
 CONDUCTOR TYPE: STRANDED OR SOLID
 CONTACT STYLE: THREE PRONG

ENVIRONMENTAL:
 OPERATING TEMPERATURE RANGE: -40°C TO +125°C.

MISCELLANEOUS:
 ALL DIMENSIONS ARE FOR REFERENCE ONLY.
 COMPONENT SHALL BE INDIVIDUALLY PACKAGED PER L-COM SPEC PS-0031.

REFERENCE THE FOLLOWING DOCUMENTS:
 TERMINATION INSTRUCTIONS LTI-018
 TOOLING INFORMATION LCT-002
 LCT-003 (PROPRIETARY)

*CONTACTS SHOWN CRIMPED

UNLESS OTHERWISE SPECIFIED, DIMENSIONS ARE IN INCHES [mm] OVERALL CABLE LENGTH TOLERANCE: ≤12 [305] = +1 [25] / -0 >12 [305] ≤60 [1524] = +2 [51] / -0 >60 [1524] ≤120 [3048] = +4 [102] / -0 >120 [3048] ≤300 [7620] = +6 [152] / -0 >300 [7620] = +5% / -0%	APPROVALS	DATE		45 BEECHWOOD DRIVE NORTH ANDOVER, MA 01845
	DRAWN BY D. PARHAM	3/25/2002		
ALL OTHER DIMENSIONAL TOLERANCES: .X = ± .2 [5.08] .XX = ± .02 [.51] .XXX = ±.005 [.13]	CHECKED BY T. CLARK	3/26/2002	CATEGORY TELECOM/MODULAR	
	APPROVED BY C. McCORMICK	3/26/2002	PRODUCT DESCRIPTION PLUG,RJ45 8X8 SHLD	
PROJECTION 	CONFIGURATION DETAILS OF UNDIMENSIONED FEATURES MAY VARY	COLOR VARIATIONS MAY OCCUR	SIZE A	FSCM NO. 43321
			DWG. NO. T8P8CSR	REV. A
			SCALE: NONE	CAD FILE: T8P8CSR.SLDDRW
			SHEET 1 OF 1	