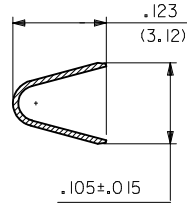
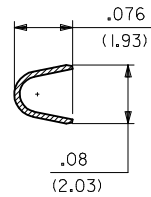


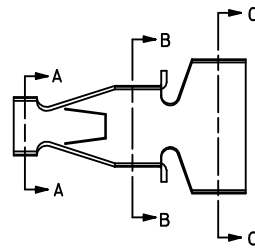
SECTION C-C



SECTION B-B

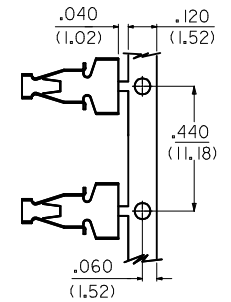


SECTION A-A

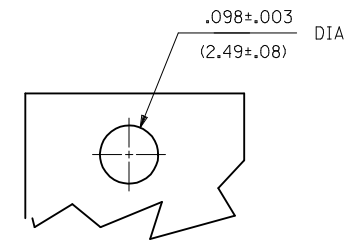
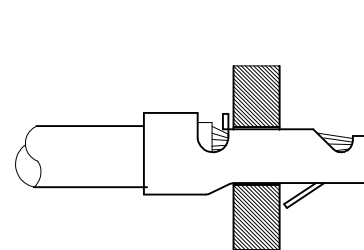
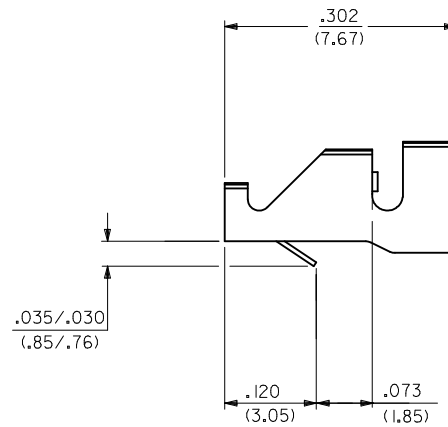


NOTES:

1. MATERIAL: 260 BRASS .008 THK
2. TERMINAL 4706-(****)* ACCEPTS 16 TO 18 AWG WIRE WITH INSULATION DIA OF .120 MAX
3. TERMINALS CONFORM TO SOLDERABILITY SPEC I52
4. PRODUCT SPECIFICATION: PS-4706-001



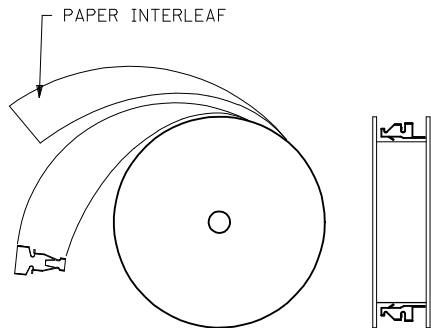
CARRIER DETAIL



RECOMMENDED PC BOARD

4706-*(****)*
 BLANK=SEE SHT 1
 3=SEE SHEET 2
 FORM
 BLANK=CHAIN
 L=LOOSE
 PLATING PER SDES-88
 *(P909) OVERALL HOT TIN DIP: 2.54 MICROMETERS MIN

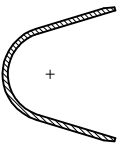
*THE PRIMARY SHIPPING CARTON WILL BE LABELED "COMPLIANT TO RoHS DIRECTIVE 2002/95/EC AND ELV ANNEX II OF DIRECTIVE 2000/53/EC." CARTONS WITHOUT THIS LABEL MAY CONTAIN PRODUCT WITH TIN-LEAD PLATING.



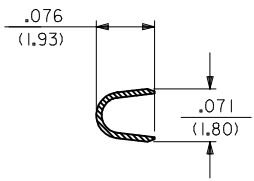
WINDING SPEC

4706-(****)*			
EDP NO.	ENG NO		
02-09-2105	4706-(P909)		
-	- ()		
-	- ()		

CHANGE TO ME10 EC NO: UCP2005-0966 DRW:ADRIANOL 2004/11/19 CHKD:SAMEC 2004/07/059 APPR:MMARGULIS 2004/11/054	QUALITY SYMBOLS ▽=0 ▽=0	GENERAL TOLERANCES (UNLESS SPECIFIED) <table border="1"> <tr> <th></th> <th>mm</th> <th>INCH</th> </tr> <tr> <td>4 PLACES ±</td> <td>---</td> <td>---</td> </tr> <tr> <td>3 PLACES ±</td> <td>---</td> <td>±.010</td> </tr> <tr> <td>2 PLACES ±</td> <td>0.25</td> <td>±.014</td> </tr> <tr> <td>1 PLACE ±</td> <td>0.36</td> <td>---</td> </tr> </table> ANGULAR ±1/2°		mm	INCH	4 PLACES ±	---	---	3 PLACES ±	---	±.010	2 PLACES ±	0.25	±.014	1 PLACE ±	0.36	---	DIMENSION STYLE .062 SCALE IN/MM DESIGN UNITS INCH THIRD ANGLE PROJECTION
		mm	INCH															
	4 PLACES ±	---	---															
	3 PLACES ±	---	±.010															
2 PLACES ±	0.25	±.014																
1 PLACE ±	0.36	---																
		DRAWN BY SAMIEC DATE 02/25/92 CHECKED BY PATEL DATE 02/25/92 APPROVED BY LENZ DATE 02/25/92	TITLE STRAIN RELIEF TERMINAL															
		MATERIAL NO. SEE CHART DRAFT WHERE APPLICABLE MUST REMAIN WITHIN DIMENSIONS	MOLEX INCORPORATED DOCUMENT NO. SD-4706 SHEET NO. 1 OF 2															
		SIZE C THIS DRAWING CONTAINS INFORMATION THAT IS PROPRIETARY TO MOLEX INCORPORATED AND SHOULD NOT BE USED WITHOUT WRITTEN PERMISSION																



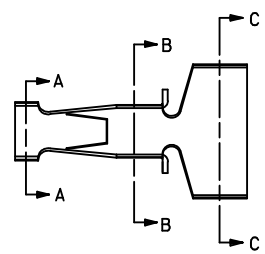
SECTION C-C



SECTION B-B



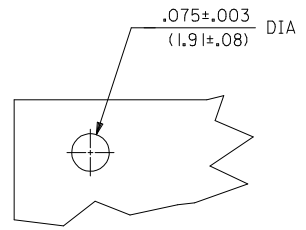
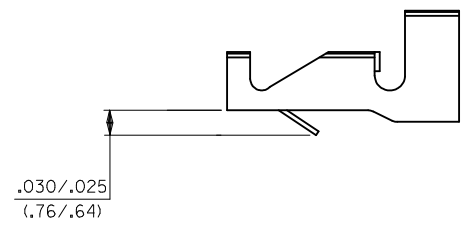
SECTION A-A



NOTES:

1. THIS PART IS THE SAME AS SHEET 1 EXCEPT AS SHOWN
2. MATERIAL: 260 BRASS .006 THK
3. FINISH: (909) * OVERALL HOT TIN DIP: 2.54 MICROMETERS MIN.
4. TERMINAL 4706-3(***)* ACCEPTS 18 TO 24 AWG WIRE WITH INSULATION DIA OF .120 MAX

*THE PRIMARY SHIPPING CARTON WILL BE LABELED "COMPLIANT TO ROHS DIRECTIVE 2002/95/EC AND ELV ANNEX II OF DIRECTIVE 2000/53/EC." CARTONS WITHOUT THIS LABEL MAY CONTAIN PRODUCT WITH TIN-LEAD PLATING.



RECOMMENDED PC BOARD
.062 THK

4706-3(***)*

EDP NO.	ENG NO.		
02-07-2101	4706-3(P909)		

CHANGE TO ME10 EC NO: DRWINADRATNOL 2004/11/08 CHKD: SAMEC 2004/11/08 APPR: MARGULIS 2004/11/08	QUALITY SYMBOLS ▽=0 ▽=0	GENERAL TOLERANCES (UNLESS SPECIFIED) <table border="1"> <tr> <th></th> <th>mm</th> <th>INCH</th> </tr> <tr> <td>4 PLACES ±</td> <td>---</td> <td>---</td> </tr> <tr> <td>3 PLACES ±</td> <td>---</td> <td>±.010</td> </tr> <tr> <td>2 PLACES ±</td> <td>0.25</td> <td>±.014</td> </tr> <tr> <td>1 PLACE ±</td> <td>0.36</td> <td>---</td> </tr> </table>		mm	INCH	4 PLACES ±	---	---	3 PLACES ±	---	±.010	2 PLACES ±	0.25	±.014	1 PLACE ±	0.36	---	DIMENSION STYLE IN/MM	SCALE ---	DESIGN UNITS INCH	THIRD ANGLE PROJECTION
		mm	INCH																		
	4 PLACES ±	---	---																		
	3 PLACES ±	---	±.010																		
2 PLACES ±	0.25	±.014																			
1 PLACE ±	0.36	---																			
DRAWN BY SAMIEC	DATE 02/25/92	CHECKED BY PATEL	DATE 02/25/92	TITLE STRAIN RELIEF TERMINAL																	
APPROVED BY LENZ	DATE 02/25/92	MATERIAL NO. SEE CHART			MOLEX INCORPORATED																
REV J1	DRAFT WHERE APPLICABLE MUST REMAIN WITHIN DIMENSIONS	SIZE C	DOCUMENT NO. SD-4706			SHEET NO. 2															