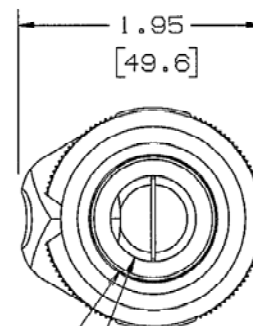
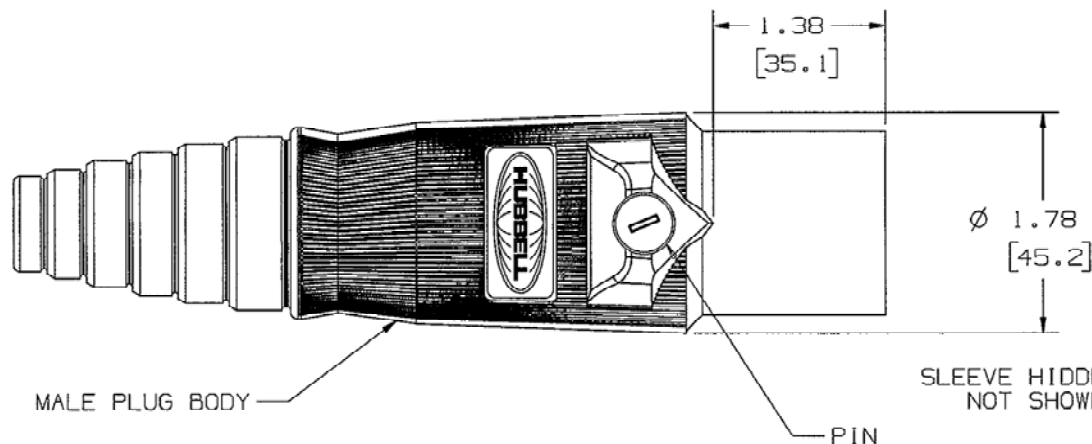
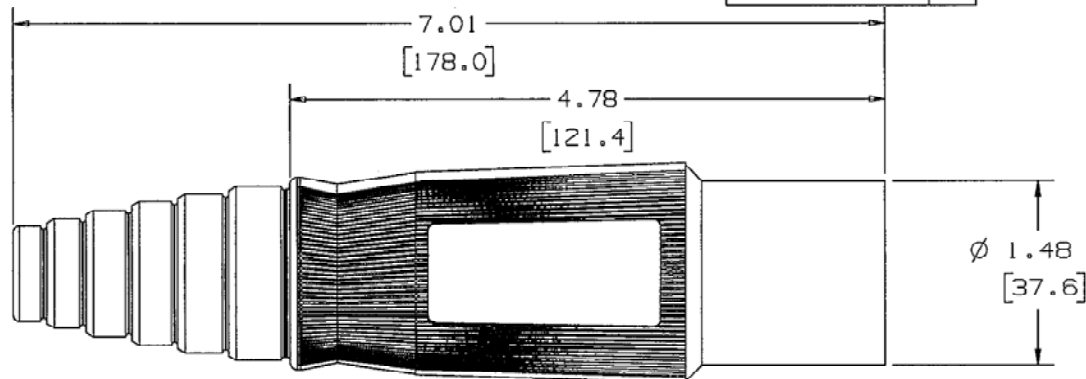


M-8908

3

SLEEVE HIDDEN &
NOT SHOWN

CONTACT 300A MALE

NOTES:

1. DIMENSIONS ARE INCHES $\pm .02$
[mm] $\pm .5$
2. CABLE SIZE: #6 AWG - 2/0, COPPER ONLY
3. RATING 600VAC/250VDC 300 AMPS
4. UL/c-UL ENCLOSURE TYPES 3R, 4X, 12, SEE INSTRUCTION SHEET
5. 1/2-20 UNF-2A X 1/2 LG. 7/32 SOCKET HEAD SET SCREWS,
LEAD WIRE & COPPER SHEET NOT SHOWN.

CODE 74545

HUBBELL CAT. NO.	COLOR
HBL300MBK	BLACK
HBL300MW	WHITE
HBL300MGN	GREEN
HBL300MR	RED
HBL300MBL	BLUE
HBL300MO	ORANGE
HBL300MBN	BROWN
HBL300MY	YELLOW

LIST OF PARTS

DESCRIPTION	MATERIAL	FINISH
MALE PLUG BODY	TPE	SEE TABLE
SLEEVE	NYLON	BLACK
CONTACT 300A MALE	BRASS	
RIVET	BRASS	
PIN	NYLON	BLACK
SET SCREW	STEEL	NICKEL
LEAD WIRE	COPPER	
COPPER SHEET	COPPER	

3	3-21-12 DIM. 7.01 WAS 6.74 (ADDED 6th RING TO BODY) PER DCN 18725 CZH CZH	CZH	3/21/12
2	REMOVE MOLDED IN TEXT FROM VIEWS, ADDING REFERENCE SET TO THIS DRAWING & FILE D-58728-01 ADD $\pm .02$ & $\pm .5$ TO NOTE 1 CHANGED NOTE 4 LIST OF PARTS DESCRIPTION MALE PLUG BODY WAS FEMALE PLUG PER DCN 11484 TWB	TWB	12/15/04
1	RELEASED PER DCN 10992 MJM	TWB	6/26/03
SYM	REVISIONS	APP	DATE

THE DESIGN AND DIMENSIONS OF THE
PRODUCT SHOWN ON THIS DRAWING ARE
SUBJECT TO CHANGE WITHOUT NOTICE

TITLE

SINGLE POLE 300A
MALE PLUGS

TOLERANCES UNLESS OTHERWISE SPECIFIED	WIRING DEVICE-KELLEMS HUBBELL INCORPORATED BRIDGEPORT, CT	
FRACTIONS 1/64	DR. BY MJM	APP. BY TWB
DECIMALS $\pm .005$	TR. BY	SCALE 1:1
ANGLES $\pm 2^\circ$	CHK'D BY TWB	DATE 6/11/03

DIMENSION SHEET FOR CAT. NO.
SEE TABLEREPAIRABLE ☒NON-REPAIRABLE ☐

B

M-8908

3