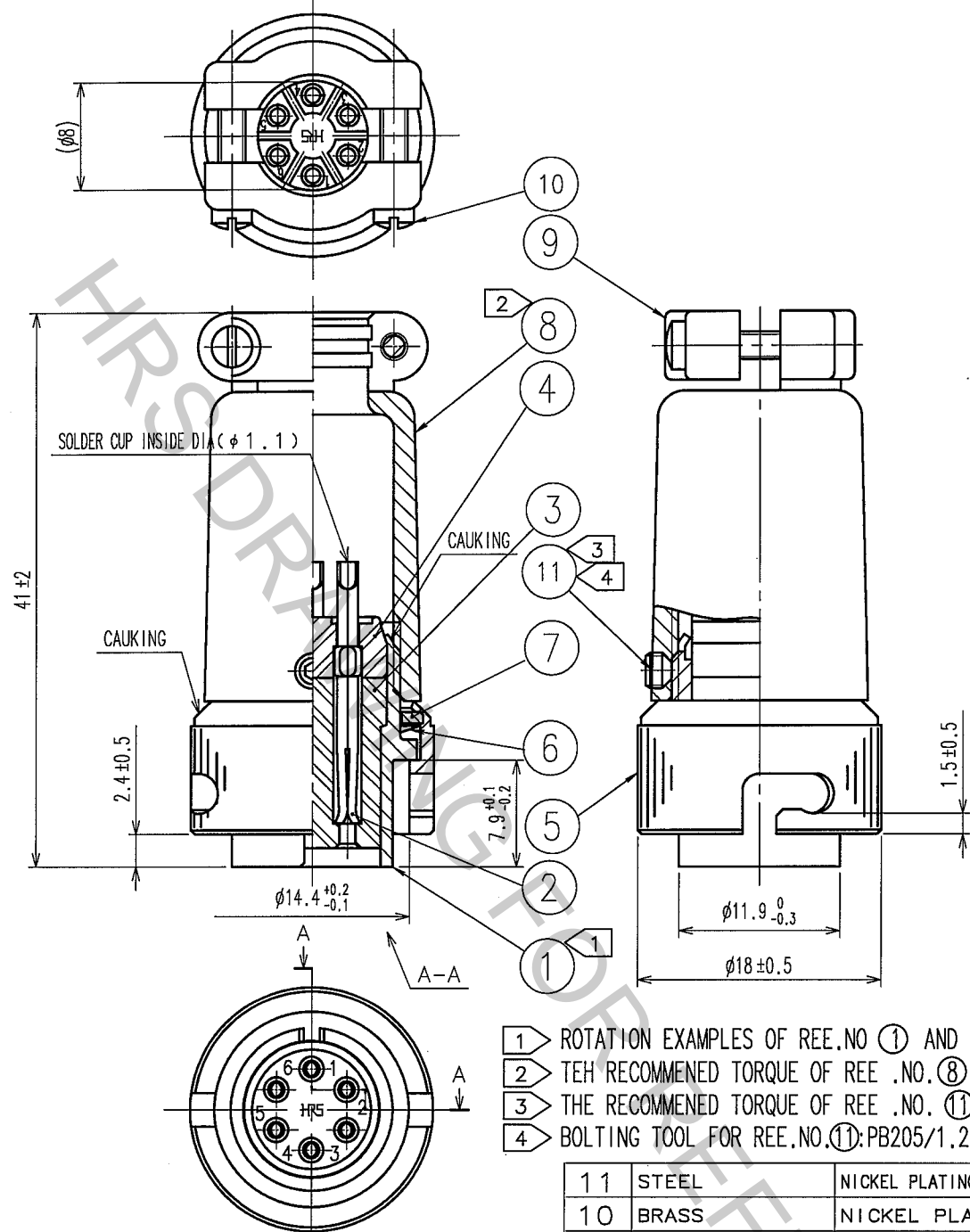


1		2			3			4		
COUNT	DESCRIPTION OF REVISIONS	BY	CHKD	DATE	COUNT	DESCRIPTION OF REVISIONS	BY	CHKD	DATE	
△					△					
△					△					
△					△					



- ① ROTATION EXAMPLES OF REE. NO ① AND ⑧ ARE SHOWN
- ② THE RECOMMENDED TORQUE OF REE. NO. ⑧: ② TO 3N.m
- ③ THE RECOMMENDED TORQUE OF REE. NO. ⑪: 0.3 TO 0.4N.m
- ④ BOLTING TOOL FOR REE. NO. ⑪: PB205/1.27 (CL150-0066-3)

11	STEEL	NICKEL PLATING	THE WIDTH ACROSS OF A HEXAGON SOCKET: 1.27
10	BRASS	NICKEL PLATING	
9	ZINC ALLOY	MATTE FINISH NICKEL PLATING	
8	ZINC ALLOY	MATTE FINISH NICKEL PLATING	
7	BRASS	NICKEL PLATING	
6	BERYLLIUM COPPER	NICKEL PLATING	
5	BRASS	MATTE FINISH NICKEL PLATING	
NO.	MATERIAL	FINISH, REMARKS	

4	DIALLYL PHTHALATE (BLACK) UL94V-0	
3	DIALLYL PHTHALATE (BLACK) UL94V-0	
2	COPPER ALLOY	SILVER PLATING 5μ m min.
1	ZINC ALLOY	MATTE FINISH NICKEL PLATING
NO.	MATERIAL	FINISH, REMARKS

CODE NO. (OLD) CL	DRAWN <i>Y. Yamada</i> 05.08.26	DESIGNED <i>Y. Yamada</i> 05.08.26	CHECKED <i>H. Zemba</i> 05.08.30	APPROVED <i>M. Sato</i> 05.09.01	RELEASED
----------------------	---------------------------------------	--	--	--	----------

TO
R

SCALE 2 : 1	DRAWING NO. EDC4-112329-71	PART NO. RM12BPE-6S(71)
UNITS mm	HRS HIROSE ELECTRIC CO., LTD.	CODE NO. CL109-0427-0-71