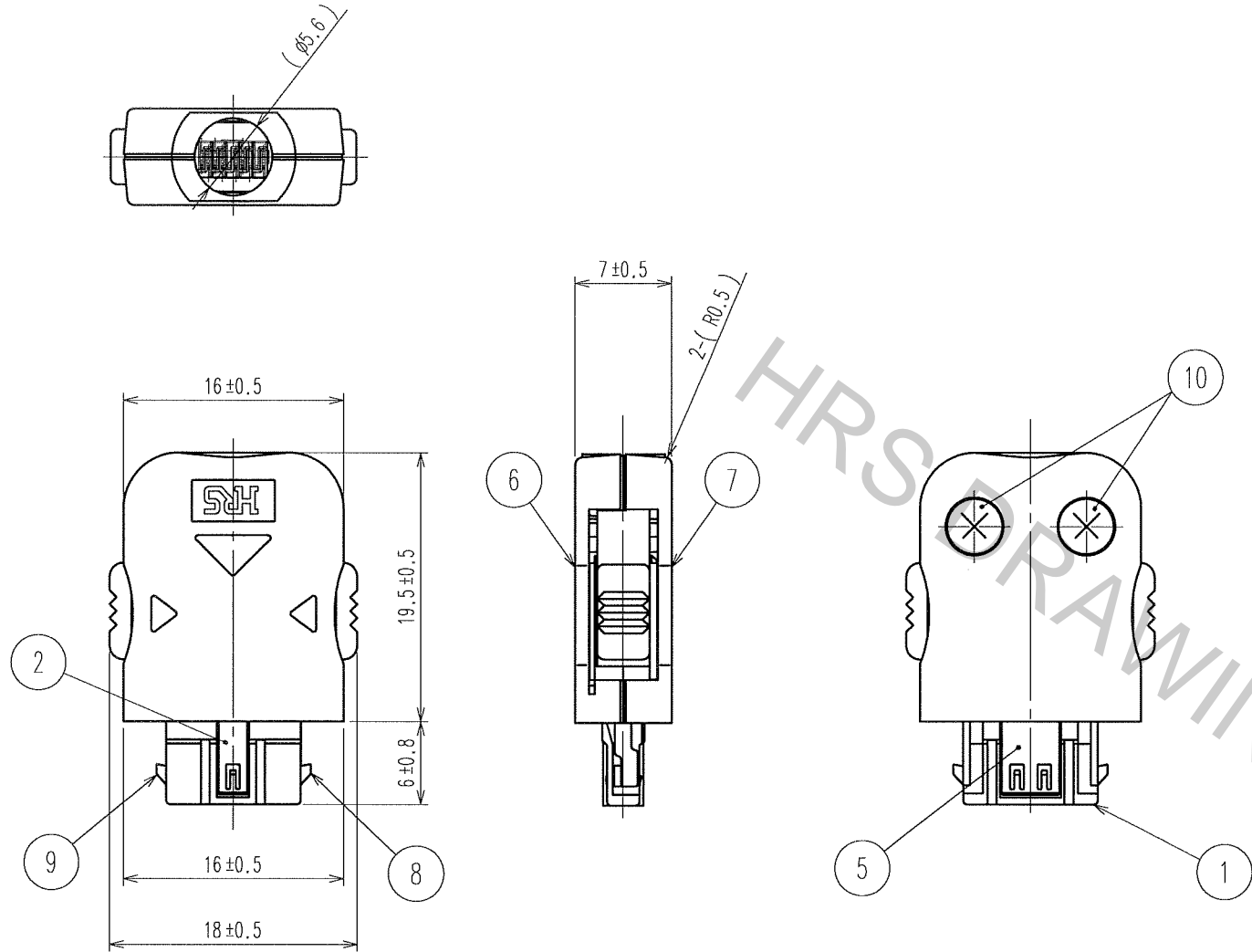


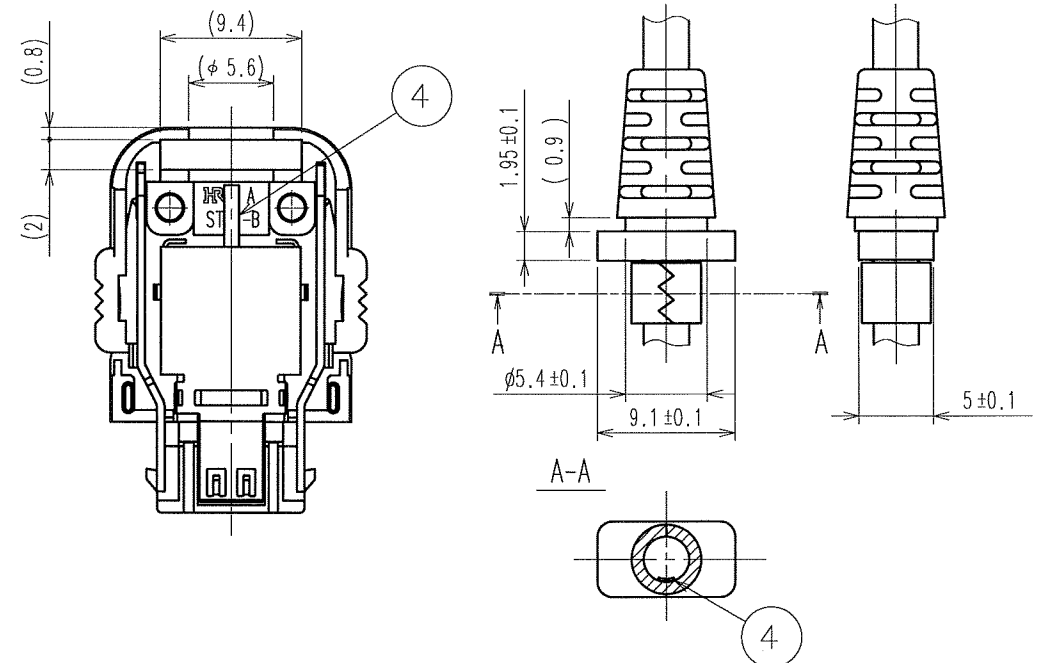
TO



NOTE 1 LESS THAN $\phi 4$ mm IS PRESUMED CABLE SIZE.
2 CABLE SHALL BE OVERMOLDED WITH BUSHING TO FIX.
USE NON-MIGRATION RESIN FOR OVERMOLDING.
3 <PLATING>
CONTACT AREA:GOLD PLATED 0.2μ m MIN.
LEAD AREA:GOLD PLATED FLASH.
UNDER PLATING:NICKEL PLATED 2μ m MIN.
THE PRODUCT IS DELIVERED IN FOLLOWING CONDITIONS:
UNIT WITH REF ① ASSEMBLED TO REF ② AND ③, COVER
WITH REF ⑥ ASSEMBLED TO REF ⑧ AND ⑨, AND REF ④,
⑤, ⑦, ⑩ DISASSEMBLED.

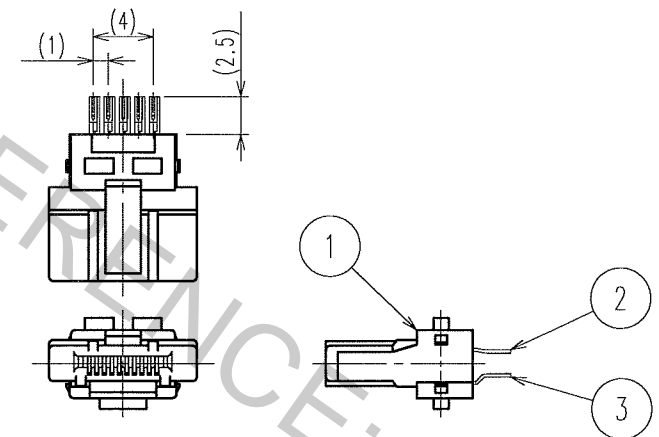
5					6					7					8				
COUNT	DESCRIPTION OF REVISIONS				BY	CHKD	DATE			COUNT	DESCRIPTION OF REVISIONS				BY	CHKD	DATE		
△										△									
△										△									
△										△									

2 BUSHING, ASSEMBLY DIMENSIONS FOR REFERENCE



CABLE SHIELD IS CONNECTED BY CAULKING OF THE CLAMP METAL
(COMMERCIAL ITEM) FITTING WITH CONNECTOR SHIELD REF ④.

CONNECTOR UNIT



5	STAINLESS STEEL		10	STEEL	BLACK CHROMATE Cr3, (TAPPING SCREW)
4	STAINLESS STEEL		9	STAINLESS STEEL	
3	COPPER ALLOY	3	8	STAINLESS STEEL	
2	COPPER ALLOY	3	7	ABS OR PC	(BLACK)UL
1	PA	(BLACK)UL94V-0	6	ABS OR PC	(BLACK)UL
NO.	MATERIAL	FINISH, REMARKS	NO.	MATERIAL	FINISH, REMARKS

CODE NO. (OLD)			DRAWN	DESIGNED	CHECKED	APPROVED	RELEASED
			H. Kikuchi 05.10.28	H. Kikuchi 05.10.28	N. Miyazaki 05.10.28	<i>[Signature]</i> 05.10.28	..

SCALE 2 : 1	DRAWING NO. EDC3-124682-02	PART NO. ST40X-10S-CV(80)
UNITS mm	HRS HIROSE ELECTRIC CO., LTD	CODE NO. CL241-0041-0-80