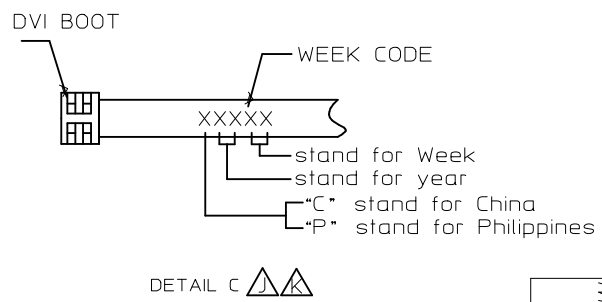
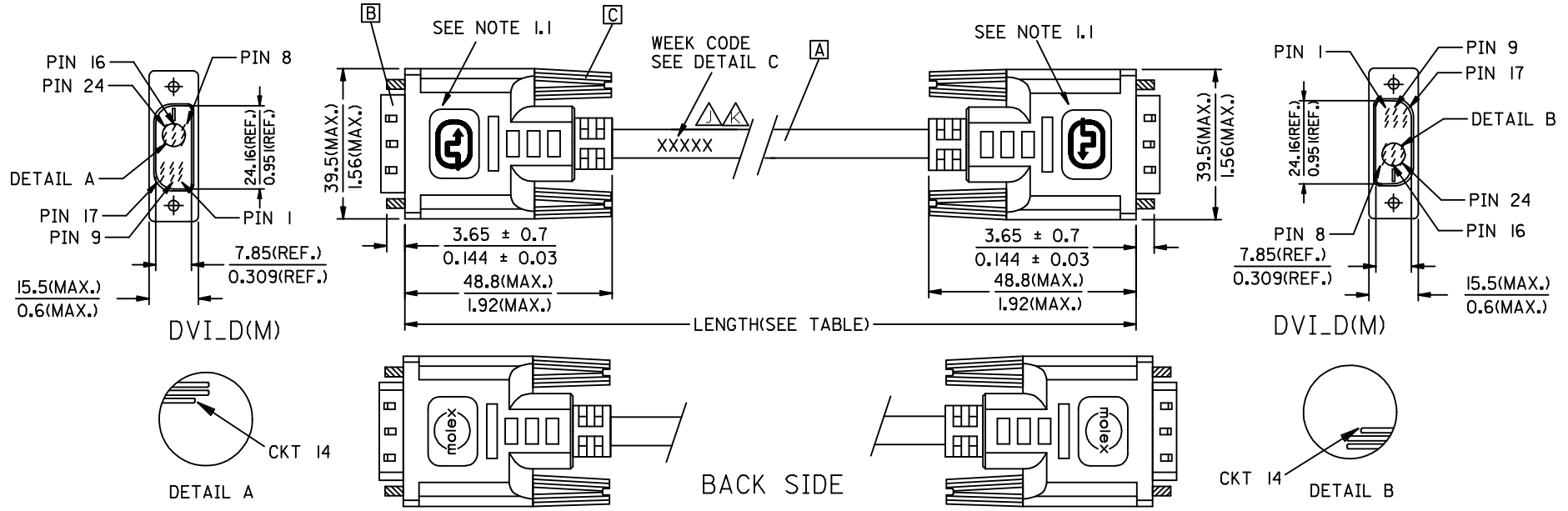


REVISIONS				
EC NO	DATE	REV	DESCRIPTION	CHANGER
CY14-5154	2013/08/30	J	CHANGE THE LABELING CONTENT FOR PRODUCTS TRANSFER TO PHILIPPINES	AHOU
CY14-5301	2013/09/12	K	CHANGE THE LABELING CONTENT FOR PRODUCTS TRANSFER TO PHILIPPINES	AHOU



▲	88741-8021	DVI_D-DVI_D SINGLE LINK CABLE 5M PARCHMENT WHT	5000 ± 150 196.9 ± 5.9	PARCHMENT WHITE	887808287
▲	88741-8011	DVI_D-DVI_D SINGLE LINK CABLE 3M PARCHMENT WHT	3000 ± 80 118.1 ± 3.1	PARCHMENT WHITE	887808287
▲	88741-8001	DVI_D-DVI_D SINGLE LINK CABLE 2M PARCHMENT WHT	2000 ± 60 78.7 ± 2.4	PARCHMENT WHITE	887808287
▲	88741-8020	DVI_D-DVI_D SINGLE LINK CABLE 5M BLK	5000 ± 150 196.9 ± 5.9	BLACK	887808276
▲	88741-8010	DVI_D-DVI_D SINGLE LINK CABLE 3M BLK	3000 ± 80 118.1 ± 3.1	BLACK	887808276
▲	88741-8000	DVI_D-DVI_D SINGLE LINK CABLE 2M BLK	2000 ± 60 78.7 ± 2.4	BLACK	887808276
	<b>MX P/N</b>	<b>DESCRIPTION</b>	<b>LENGTH</b>	<b>CABLE COLOR</b>	<b>CABLE P/N</b>

<b>ENTER DESCRIPTION</b> EC NO: CPG2014-0796 DRWN: XJGU001 CHKD: AHOU APPR: XAWANG	<b>QUALITY SYMBOLS</b> $F_A=0$ $F_C=0$ $F_P=0$	<b>GENERAL TOLERANCES (UNLESS SPECIFIED)</b>		<b>DIMENSION STYLE</b> MM/IN		<b>SCALE</b>	<b>DESIGN UNITS</b> METRIC		THIRD ANGLE PROJECTION
		mm	INCH	DRAWN BY	DATE	<b>TITLE</b> DVI_D-DVI_D S.LINK CBL			
		4 PLACES	± ---	± ---	XJGU001				2013/09/06
		3 PLACES	± ---	± ---	CHECKED BY	DATE			
2 PLACES	± ---	± ---	JASON	2013/09/06					
1 PLACE	± ---	± ---	APPROVED BY	DATE					
0 PLACE	± ---	± ---	XAWANG	2013/09/12					
<b>DRAFT WHERE APPLICABLE MUST REMAIN WITHIN DIMENSIONS</b>		ANGULAR ± ---°		<b>MATERIAL NO.</b> SEE TABLE		<b>DOCUMENT NO.</b> SD-88741-001		<b>SHEET NO.</b> 1 OF 2	
THIS DRAWING CONTAINS INFORMATION THAT IS PROPRIETARY TO MOLEX INCORPORATED AND SHOULD NOT BE USED WITHOUT WRITTEN PERMISSION									

NOTE: 1. OVERMOLD SPECIFICATION

- 1.1 DVI BOOT MOLDED WITH SNOW WHITE PVC RESIN P/N IS 887800076.
- 1.2 UL94V-0, COLOR: MAD432
- 1.3 HARDNESS (DUROMETER): SHORE A 90-95
- 2. MECHANICAL SPECIFICATION
  - 2.1 CABLE SHOULD STAND THE PULL FORCE 89-111N FOR 30 SECONDS WITH NO VISIBLE TERMINATION DAMAGE.
  - 2.2 CABLE SHOULD PASS THE FLEX TEST IN 100 CYCLES AT EACH OF PLANES, PER EIA 364-41, CONDITION 1.
- 3. CABLE ELECTRICAL SPECIFICATION
  - 3.1 DIELECTRIC STRENGTH: 300VDC FOR 10mS.
  - 3.2 INSULATION RESISTANCE: 20 MEGA Ohms
  - 3.3 DIFFERENTIAL LINES CHARACTERISTIC IMPEDANCE: 100±7 Ohms@TDR.
- 4. DVI CONNECTOR SPECIFICATION
  - 4.1 REFER TO PRODUCT SPEC. PS74320-0001.
  - 4.2 CONTACT PLATING: AU FLASH.
- 5. SHORTCIRCUIT AMONG DRAIN WIRES IS ACCEPTABLE.
- 6. THIS PRODUCT MUST MEET MX RoHS COMPLIANCE.

7. CONNECTION DIAGRAM

SHIELD	SHIEDL	GROUND
PIN 24	PIN 24	TMDS CLOCK-
PIN 23	PIN 23	TMDS CLOCK+
PIN 22	PIN 22	TMDS CLOCK SHIELD
PIN 19	PIN 19	TMDS DATA 0 SHIELD
PIN 18	PIN 18	TMDS DATA 0+
PIN 17	PIN 17	TMDS DATA 0-
PIN 16	PIN 16	HOT PLUG DETECT
PIN 15	PIN 15	GROUND(+5V & HV SYNC.)
PIN 14	PIN 14	POWER +5V
PIN 11	PIN 11	TMDS DATA 1 SHIELD
PIN 10	PIN 10	TMDS DATA 1+
PIN 9	PIN 9	TMDS DATA 1-
PIN 7	PIN 7	DDC DATA
PIN 6	PIN 6	DDC CLOCK
PIN 3	PIN 3	TMDS DATA 2 SHIELD
PIN 2	PIN 2	TMDS DATA 2+
PIN 1	PIN 1	TMDS DATA 2-
DVI_D	DVI_D	CABLE FUNCTION

8. MATERIAL LIST

C	DVI THUMB SCREW 887806077
B	DVI_D SINGLE CHANNEL G/F CONNECTOR 743230101
A	DVI SINGLE LINK CABLE (SEE TABLE)
ITEM	DESCRIPTION

ENTER DESCRIPTION EC NO: CPG2014-0796 DRWN: XJGU001 CHKD: AHU APPR: XAWANG 2013/09/14 2013/09/14 2013/09/24	QUALITY SYMBOLS F=0 F=0 F=0	GENERAL TOLERANCES (UNLESS SPECIFIED)		DIMENSION STYLE		SCALE	DESIGN UNITS	THIRD ANGLE PROJECTION		
				MM/IN			METRIC		TITLE DVI_D-DVI_D S.LINK CBL	
				mm	INCH	DRAWN BY	DATE			
		4 PLACES ± ---		± ---	± ---	XJGU001	2013/09/06			
		3 PLACES ± ---		± ---	± ---	CHECKED BY	DATE			
2 PLACES ± ---		± ---	± ---	JASON	2013/09/06					
1 PLACE ± ---		± ---	± ---	APPROVED BY	DATE					
0 PLACE ± ---		± ---	± ---	XAWANG	2013/09/12					
		ANGULAR ± ---°		MATERIAL NO.		DOCUMENT NO.		SHEET NO.		
		DRAFT WHERE APPLICABLE MUST REMAIN WITHIN DIMENSIONS		SEE TABLE		SD-88741-001		2 OF 2		
K				SIZE		THIS DRAWING CONTAINS INFORMATION THAT IS PROPRIETARY TO MOLEX INCORPORATED AND SHOULD NOT BE USED WITHOUT WRITTEN PERMISSION				



OTE:1. OVERMOLD SPECIFICATION

- 1.1 DVI BOOT MOLDED WITH SNOW WHITE PVC RESIN P/N IS 887800076.
- 1.2 UL94V-0, COLOR: MAD432
- 1.3 HARDNESS (DUROMETER): SHORE A 90-95

2. MECHANICAL SPECIFICATION

- 2.1 CABLE SHOULD STAND THE PULL FORCE 89-11IN FOR 30 SECONDS WITH NO VISIBLE TERMINATION DAMAGE.
- 2.2 CABLE SHOULD PASS THE FLEX TEST IN 100 CYCLES AT EACH OF PLANES, PER EIA 364-4I, CONDITION I.

3. CABLE ELECTRICAL SPECIFICATION

- 3.1 DIELECTRIC STRENGTH: 300VDC FOR 10mS.
- 3.2 INSULATION RESISTANCE: 20 MEGA Ohms
- 3.3 DIFFERENTIAL LINES CHARACTERISTIC IMPEDANCE: 100±7 Ohms@TDR.

4. DVI CONNECTOR SPECIFICATION

- 4.1 REFER TO PRODUCT SPEC. PS74320-0001.
- 4.2 CONTACT PLATING: AU FLASH.
- 5. SHORTCIRCUIT AMONG DRAIN WIRES IS ACCEPTABLE.

6. THIS PRODUCT MUST MEET MX RoHS COMPLIANCE.

7. CONNECTION DIAGRAM

SHIELD	SHIEDL	GROUND
PIN 24	PIN 24	TMDS CLOCK-
PIN 23	PIN 23	TMDS CLOCK+
PIN 22	PIN 22	TMDS CLOCK SHIELD
PIN 19	PIN 19	TMDS DATA 0 SHIELD
PIN 18	PIN 18	TMDS DATA 0+
PIN 17	PIN 17	TMDS DATA 0-
PIN 16	PIN 16	HOT PLUG DETECT
PIN 15	PIN 15	GROUND(+5V & HV SYNC.)
PIN 14	PIN 14	POWER +5V
PIN 11	PIN 11	TMDS DATA 1 SHIELD
PIN 10	PIN 10	TMDS DATA 1+
PIN 9	PIN 9	TMDS DATA 1-
PIN 7	PIN 7	DDC DATA
PIN 6	PIN 6	DDC CLOCK
PIN 3	PIN 3	TMDS DATA 2 SHIELD
PIN 2	PIN 2	TMDS DATA 2+
PIN 1	PIN 1	TMDS DATA 2-
DVI_D	DVI_D	CABLE FUNCTION

8. MATERIAL LIST

ITEM	DESCRIPTION
C	DVI THUMB SCREW 887806077
B	DVI_D SINGLE CHANNEL G/F CONNECTOR 743230101
A	DVI SINGLE LINK CABLE (SEE TABLE)

ENTER DESCRIPTION EC NO: DG2006-0186 DRWN: PDAI CHKD: APPR: TKAN	2006/03/09 2006/03/09 2006/03/10	DESCRIPTION REV	QUALITY SYMBOLS	GENERAL TOLERANCES (UNLESS SPECIFIED)		DIMENSION STYLE		SCALE	DESIGN UNITS	THIRD ANGLE PROJECTION
			= 0 = 0	mm	INCH	MM/IN	---	METRIC		
			4 PLACES ± --- ± --- 3 PLACES ± --- ± --- 2 PLACES ± --- ± --- 1 PLACE ± --- ± --- ANGULAR ± ---°	DRAWN BY	DATE	TITLE				
			DRAFT WHERE APPLICABLE MUST REMAIN WITHIN DIMENSIONS	PDAI 2006/03/07 CHECKED BY TEDDY 2006/03/07 APPROVED BY BORON 2006/03/07	DVI_D-DVI_D S.LINK CBL MOLEX INCORPORATED					
				SEE TABLE	MATERIAL NO.	DOCUMENT NO.	SHEET NO.			
					SIZE A 4	THIS DRAWING CONTAINS INFORMATION THAT IS PROPRIETARY TO MOLEX INCORPORATED AND SHOULD NOT BE USED WITHOUT WRITTEN PERMISSION				