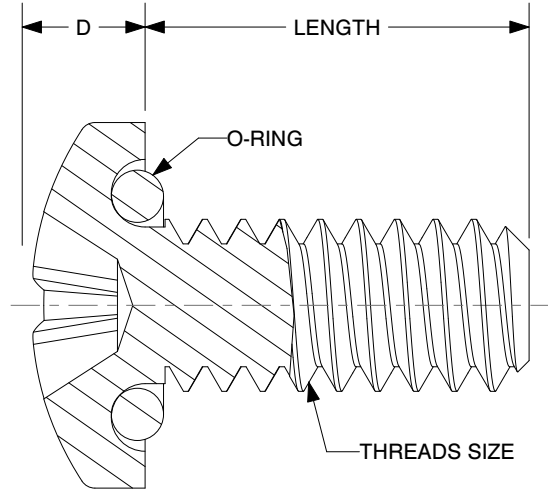
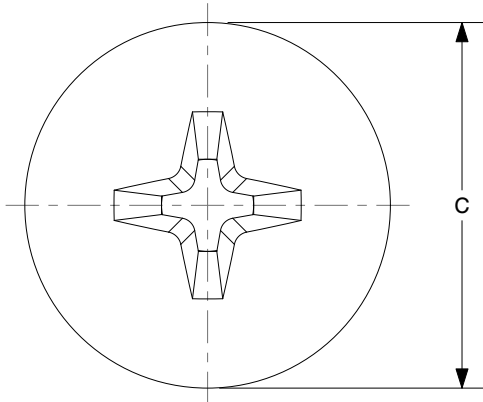
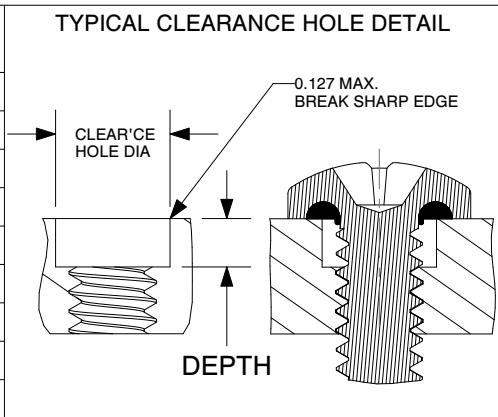


ALL DIMENSIONS IN MILLIMETERS



TOL.
+0-0.790 UP TO 25.4
+0-1.587 25.4 TO 50.8

| THREAD SIZE | C max | D max | Head Driver Size | RECOM. CLEAR. HOLE min. max. | DEPTH | LENGTH |
|-------------|--------|-------|------------------|------------------------------|----------|------------|
| M 2x0.4 | 4.957 | 1.600 | #1 | 2.310 2.410 | 0.8-1.2 | 4 to 12 mm |
| M2.5x0.45 | 5.587 | 2.100 | #1 | 2.670 2.840 | 0.9-1.35 | 4 to 12 mm |
| M 3x0.5 | 6.827 | 2.400 | #2 | 3.550 3.650 | 1.0-1.5 | 4 to 40 mm |
| M 3.5x0.6 | 8.227 | 2.600 | #2 | 3.890 3.990 | 1.2-1.8 | 4 to 40 mm |
| M 4x0.7 | 8.817 | 3.050 | #2 | 4.390 4.540 | 1.4-2.1 | 4 to 40 mm |
| M 5x0.8 | 10.027 | 3.700 | #2 | 5.560 5.660 | 1.6-2.4 | 6 to 40 mm |
| M 6x1 | 12.707 | 4.600 | #3 | 6.730 6.830 | 2.0-3.0 | 6 to 50 mm |



STANDARD SPECIFICATIONS & COMMON OPTIONS (HOW TO ORDER)
 STD. SCREW MATERIAL: TYPE 18/8 STAINLESS STEEL PER DFARS (OTHER MATERIALS AVAILABLE)
 STD. SCREW FINISH: NATURAL PASSIVATED PER AMS2700 (UNLESS OTHERWISE SPECIFIED)
 STD. O-RING MATERIAL: SILICONE RUBBER (SEE TABLE FOR O-RING OPTIONS)

| | | |
|--------------------|--------|----------------------------|
| SAMPLE CATALOG NO. | | RM3X12MM-2701-BLKOX |
| SCREW TYPE | RM | PAN HEAD WITH CROSS RECESS |
| THREAD | 3 | ENTER BASIC THREAD SIZE |
| | X | |
| LENGTH | 12 | ENTER LENGTH |
| O-RING SUFFIX | -2701 | ENTER FROM TABLE |
| OPTIONS | -BLKOX | ENTER FROM TABLE |

| AVAILABLE O-RING MATERIALS | | |
|----------------------------|---------------------------|--|
| Compound Suffix | Material | Service Temp. |
| -2701 | Silicone Rubber | -150° F to 500° F -101° C to 260° C |
| -2615 | Fluoro-Silicone Rubber | -78° F to 450° F -61° C to 232° C |
| -5701 | Viton A | -20° F to 400° F -29° C to 204° C |
| -4601 | Buna N (NBR) | -65° F to 250° F -54° C to 121° C |
| -3701 | Neoprene (EPR) | -65° F to 300° F -54° C to 149° C |
| -7601 | Ethylene Propylene (EPDM) | -65° F to 300° F -54° C to 149° C |

| COMMON OPTIONS | |
|----------------|--------------------------------------|
| SUFFIX | DESCRIPTION |
| -BLKOX | BLACK OXIDE PER MIL-C-13924, CLASS 4 |
| -NY | LOCKING NYLON PELLET |
| -LY | LOCKING NYLON STRIP |
| -TP | LOCKING NYLON STD. PATCH |
| -HTP | HIGH TEMP. LOCKING NYLON PATCH |

| | | |
|---|--|-----------------|
| O | UPDATE FINISHING SPECIFICATION | 09.20.13 |
| M | CHANGED RM3X12-2701-BLKOX TO RM3X12MM-2701-BLKOX | S. GOK 05.16.12 |
| L | Cmax. CHANGED + 0.127mm FOR ALL THREAD SIZE | S. GOK 03.16.11 |
| K | CHANGED Cmax of M2 from 4.240 to 4.830 | S. GOK 09.09.10 |
| J | ADDED "PER DFARS" FOR THE SCREW MATERIAL | S. GOK 07.02.09 |

| REV. | DESCRIPTION | DATE |
|---|-------------|--|
| MAXIMUM AND MINIMUM MEASUREMENTS ARE STATED DIRECTLY ON EACH DIMENSION. MAT'L: AS NOTED FINISH: AS NOTED | | TITLE: SEELSKREW® METRIC PAN HEAD APM-HEXSEAL CORPORATION |
| ENG. - DWN. J. PAULUMBO CHKD. FK | | 12.16.58 09.20.13 |
| SCALE N/A DWG. NO. RM-0000-00-00 | | |

THIS DRAWING COVERS PROPRIETARY ITEM AND IS THE PROPERTY OF THE APM-HEXSEAL CORPORATION. THIS DRAWING IS NOT TO BE COPIED OR USED WITHOUT THE WRITTEN APPROVAL OF AN OFFICER OF THE APM-HEXSEAL CORPORATION.