

Nota 1: Denomination:  
 - Family: PA66/6  
 - Manufacturer : EMS  
 - Trade name: Grilon TS V0  
 - Colour : Blue RAL 5005  
 - RoHS compliant  
 - Recommendation:  
 UL:  
 - Yellow card number requested: QMFZ2.E53893  
 - Coloured agent allowed: NO

Nota 2: Injection process  
 - No mould release agent or silicon agent (no grease or oil mark)  
 - Max regrind material percentage: 25 %

Nota 3: Dimension, tolerance  
 - All dimensions under moisture absorption condition  
 - For dimensions not specified refer to 3D file. (All dimensions are centred on the middle of the tolerance, and comply with the NFT 58000 reduced class).  
 - All the draft angle are designed on the 3D file  
 - Part Volume 5768(mm<sup>3</sup>)  
 - General tolerance, displacement due to parts of the mold, shrink marks, burrs in accordance to NFT 58000  
 - The capability dimensions must be measured between (target) ⊕ ⊗

Nota 4: Appearance  
 - Injection gate location must be approved by LEM design office.  
 - Ejectors location must be approved by LEM design office.  
 - Level of ejector marks must be in hollow mini 0.05mm maxi 0.3mm.  
 - Location of parting line must be approved by LEM design office.  
 - Burrs on parting line not allowed.  
 - General appearance: EDM (electrical discharge machining) CH21, unless otherwise specification.

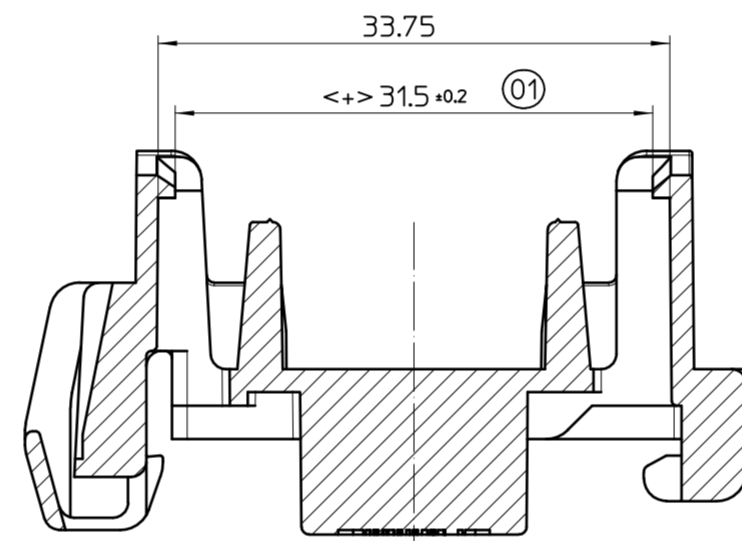
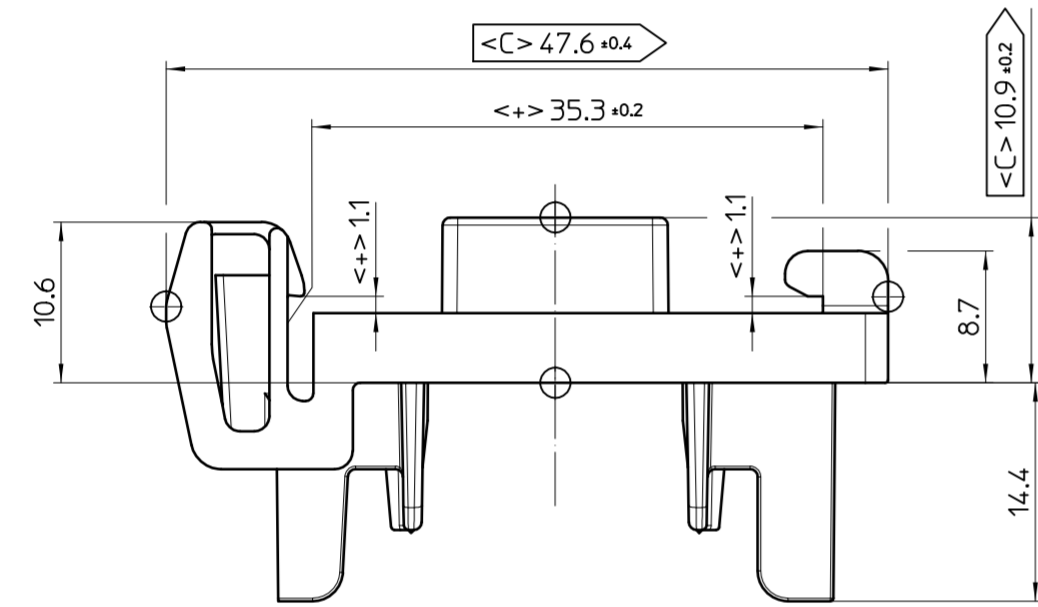
Nota 5: Traceability marking  
 - Marking raised, height max 0.3 mm in a hollow, unless otherwise specification. This marking must not exceed the face.  
 - Drawing revision on the part, location, refer to drawing (2 digits on a removable block) ex: drawing revision 00 = 00 on the part.  
 - Warning, the letter at the end of the drawing revision must not be marked on the part, ex: drawing revision 01A = 01 on the part.  
 - Cavity number, location, refer to the drawing, written with a number, directly marked on the mold (1 digit if cavity number between 2 and 9, 2 digits if more than 10 cavities)  
 - Date code (month, year), (on an ejector or a removable bloc), location, refer to the drawing.  
 - All the traceability marking locations can be moved, but must be defined in agreement with LEM design office.

Nota 6: Others marking  
 - For all marking (symbol, logo, text, etc.) refer to 3D file.  
 - The marking raised, refer to the 3D file.  
 - Material >PA66/6<, refer to 3D file.

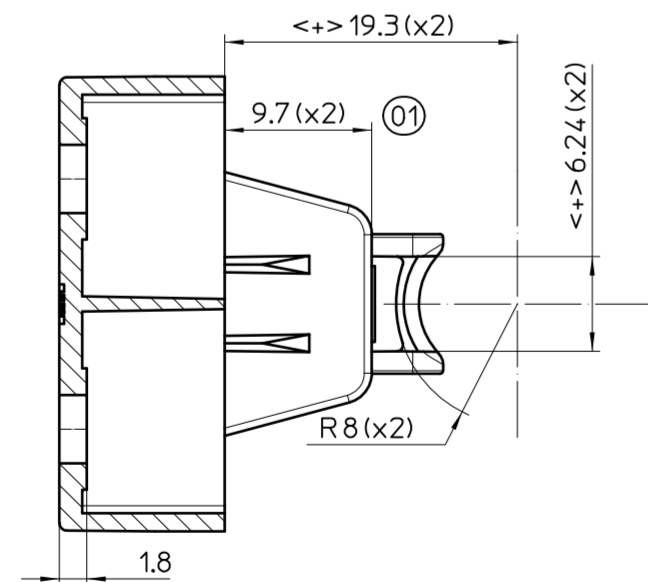
Nota 7: Quantity of special characteristic dimensions

<<C>	Capability dimensions	03
<<cs>	Key characteristics	XX

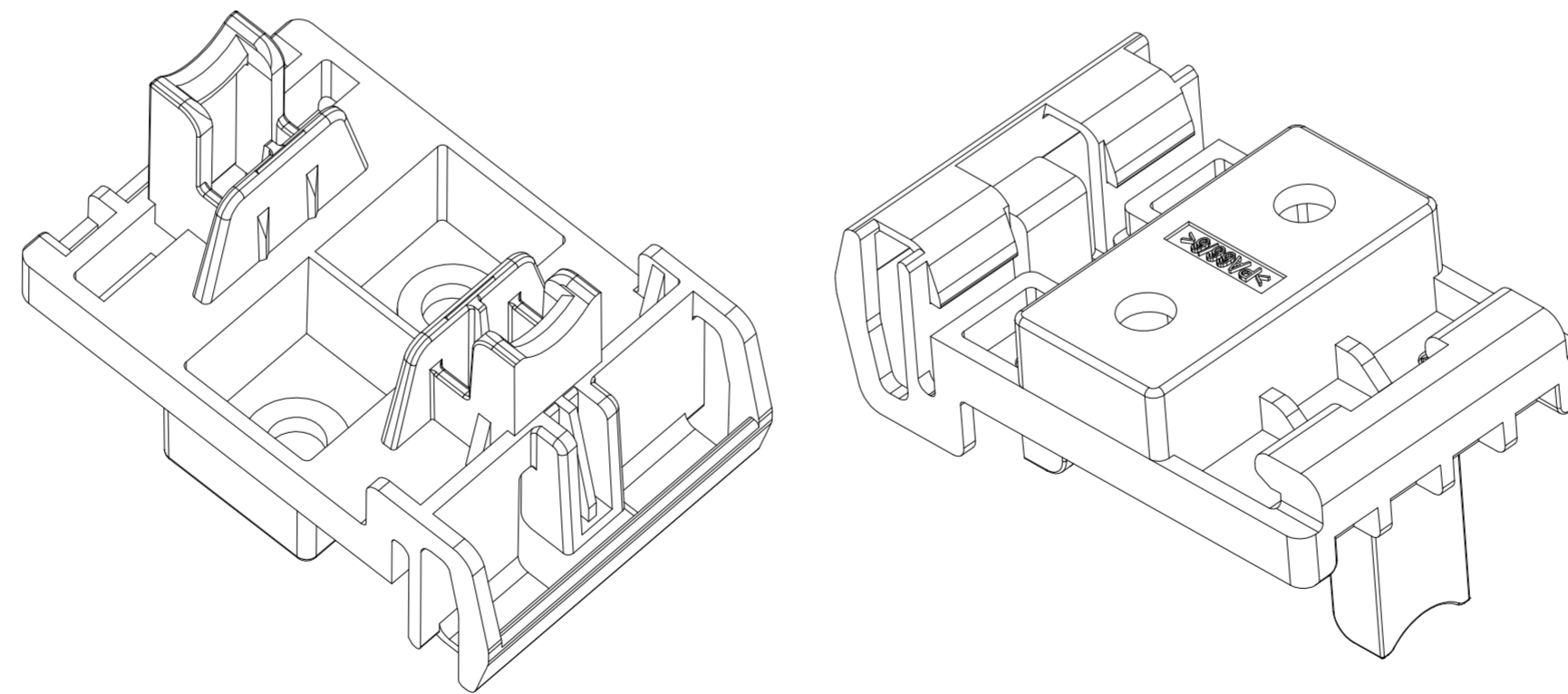
Nota 8: CLEM for finish product 70.D5.98.000.0



SECTION B-B



SECTION A-A



General tolerances Linear: ± See drawing Angular: ± See drawing	Folio: 1/1	LEM Electronics (China) Co., Ltd No.28.Linhe Str.Linhe Industrial Development Zone Shunyi District 101300, Beijing China		LEM Intellectual Property SA Avenue Beauregard 1 CH-1700 Fribourg Switzerland
<<cs> Key characteristics	<<C> Capability dimensions	<<F> Functional dimensions	Size A2	Scale 2:1
All linear dimensions are in millimeter. All angles are in degree.				
DIN RAIL ADAPTER ATO XX-BXXX-D16			This document is the property of LEM Intellectual Property SA. No copy without prior written permission.	Writer 03.28.2016 YHo
			Checker YNS	Approval 07.18.2016 WJu
Drawing reference			Revision	
50.24.00.185.0			01	

Rev.	Date (MM.DD.YYYY)	Modification	CFU	Name
01	07.11.2016	Design modified to improve the clamping force	---	YHo
00A	06.28.2016	CLEM for finish product is added	---	YHo
00	03.29.2016	New drawing	---	YHo