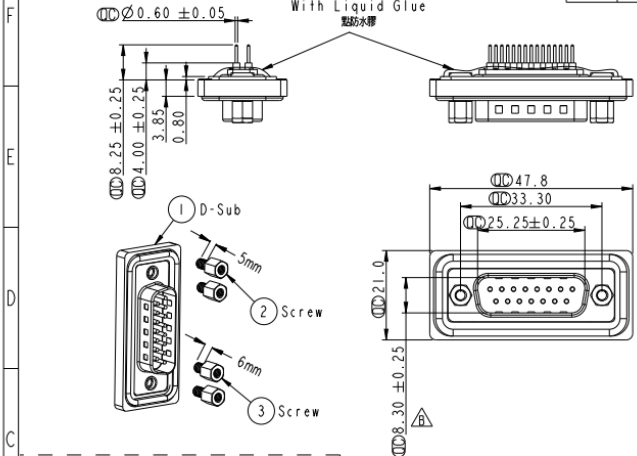


REV.	ECN NO.	DATE	SIGN	DESCRIPTION
B	LEN1390070	2013/08/26	Tony_leng	Change 8.36 To 8.30



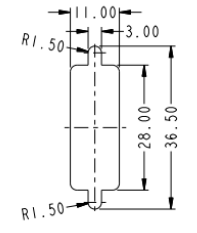
ALTW
CONFIDENTIAL
2013-08-26
R&D DEPT.

ALTW
DCC. DEPT.
CONFIDENTIAL
2013.09.04
ISSUED

Panel Thickness
面板厚度
X (Max.)

Screw L=5.0 For Panel Thickness Under 1.2mm
適用板厚為 1.2mm 以下

Screw L=6.0 For Panel Thickness Between 1.2~2.0mm
適用板厚為 1.2~2.0mm



Recommended Panel Cut-Out
建議挖孔尺寸

- Note:
- \varnothing Important Dimension.
 - Waterproof Rate : IP68
IP68: 1M of depth of water 24 hours
(防水等級: IP68)
(IP68: 1米水深24小時)
 - Do Mating Test After Glued
黏膠後, 須作對插測試
 - D-SUB Conn. : Black Core , PBT
 - Plastic Jacket : Black , Nylon+GF
 - Pin : Copper Alloy , Gold Plated
 - Ring : Light Blue, Silicone
 - Screw : Copper Alloy, Nickel Plated, #4-40 UNC

UNIT: mm		
TOLERANCE	±0.25	
.x	±0.1	
.xx	±0.05	
ANGLES	±1°	

TITLE	D-SUB Conn.		
	Panel Screw DB15P M Conn. M Pin		
SCALE	1:1	SIZE	A4
REV.	B	QC. REV.	A.5
			Inspection item

Amphenol LTW
安費諾亮泰企業股份有限公司

ITEM NO.	SDB-15PMMP-SL8001	DESIGN BY	Tony_leng	DATE	2013-08-26
DWG. NO.	SDB-15PMMP-SL8001	CHECKED BY	Yulong	DATE	2013-08-26
CUSTOMER	ALTW	APPROVED BY	Victor	DATE	2013-08-26

THIS DOCUMENT IS SUBJECT TO CHANGE WITHOUT NOTICE. IT IS CONFIDENTIAL AND A PROPERTY OF AMPHENOL LTW. DISCUSSION TO THIRD PARTIES HAS TO BE AUTHORIZED BY AMPHENOL LTW.