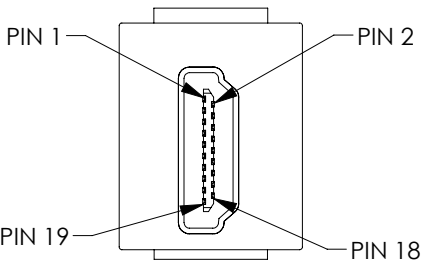
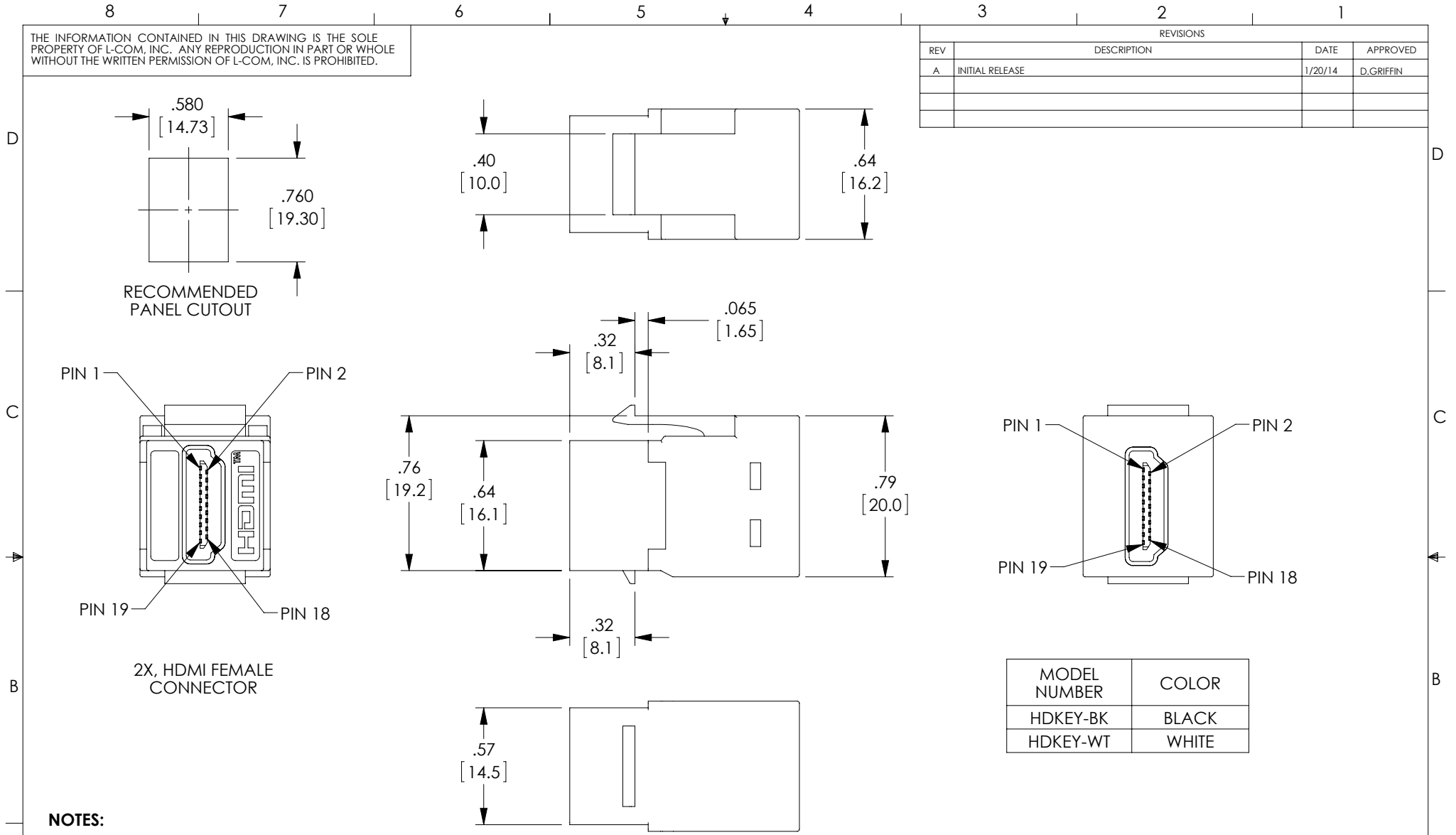


THE INFORMATION CONTAINED IN THIS DRAWING IS THE SOLE PROPERTY OF L-COM, INC. ANY REPRODUCTION IN PART OR WHOLE WITHOUT THE WRITTEN PERMISSION OF L-COM, INC. IS PROHIBITED.

REVISIONS			
REV	DESCRIPTION	DATE	APPROVED
A	INITIAL RELEASE	1/20/14	D.GRIFFIN



MODEL NUMBER	COLOR
HDKEY-BK	BLACK
HDKEY-WT	WHITE

**NOTES:**

**MATERIALS:**  
HDMI HOUSING: PC, UL94V-0  
CONNECTOR SHELL: GOLD FLASH  
CONTACTS: 15µ GOLD PLATED

- ALL DIMENSIONS ARE FOR REFERENCE ONLY.
- ADAPTER SHALL BE INDIVIDUALLY PACKAGED IN ACCORDANCE WITH L-COM SPECIFICATION PS-0031.

**REGULATORY COMPLIANCE:**  
CE2011/65/EU (RoHS DIRECTIVE)

UNLESS OTHERWISE SPECIFIED, DIMENSIONS ARE IN INCHES [mm] OVERALL CABLE LENGTH TOLERANCE: ≤12 [305] = +1 [25] / -0 >12 [305] ≤60 [1524] = +2 [51] / -0 >60 [1524] ≤120 [3048] = +4 [102] / -0 >120 [3048] ≤300 [7620] = +6 [152] / -0 >300 [7620] = +5% / -0% ALL OTHER DIMENSIONAL TOLERANCES: .X = ± .2 [5.08] .XX = ± .02 [51] .XXX = ± .005 [1.27]	APPROVALS DRAWN BY D.FRISIELLO CHECKED BY R.SCOTT APPROVED BY S.SMITH	DATE 1/16/14 1/16/14 1/16/14	45 BEECHWOOD DRIVE NORTH ANDOVER, MA 01845
	CONFIGURATION DETAILS OF UNDIMENSIONED FEATURES MAY VARY		CATEGORY <b>AUDIO VIDEO</b>
	COLOR VARIATIONS MAY OCCUR		PRODUCT DESCRIPTION <b>ADPT, HDMI KEYSTONE</b>
	PROJECTION 	SIZE <b>A</b>	FSCM NO. <b>43321</b>
SCALE: NONE		CAD FILE: HDKEY.SLDDRW	SHEET 1 OF 1