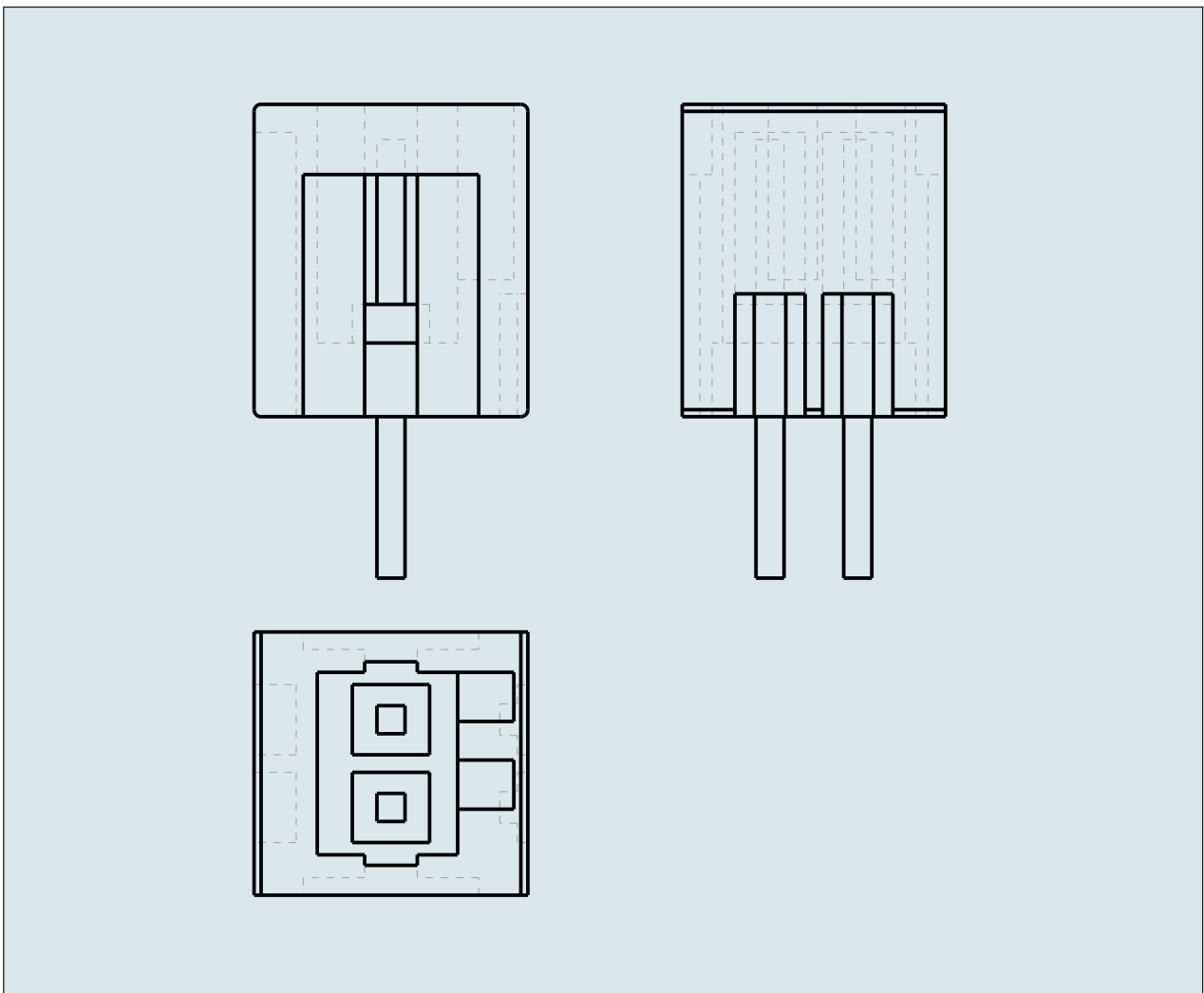
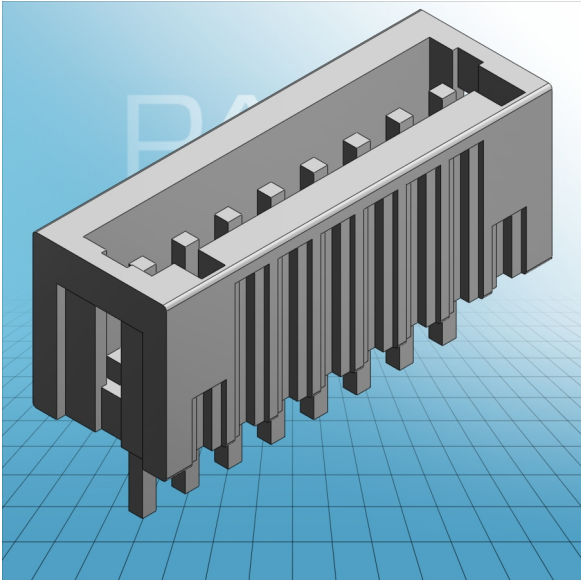


**HEADER STRAIGHT SOLDER PIN0.
8x0.8 MM PIN SPACING 2.5 MM / 0.098
IN 100% PROTECTED AGAINST
MISMATING**



**HEADER STRAIGHT SOLDER PIN0.
8x0.8 MM PIN SPACING 2.5 MM / 0.098
IN 100% PROTECTED AGAINST
MISMATING**

733-332 TO 733-342

ITEM-NO. (ITEM-NO.)	733-338
Measured voltage (Measured voltage / V)	160
Measured shock voltage (Measured shock voltage / kV)	2.5
Pollution degree (Pollution degree)	2
Current intensity (Current intensity / A)	6
RM (PIN SPACING / mm)	2.5
P (NO. OF POLES)	8
Height (Height / mm)	8.9
Width (Width / mm)	22.5
Depth (Depth / mm)	7.8
COLOR (COLOR)	lichtgrau
Comment (Comment)	L = (No. of poles + 1) x Pin Spacing
Dimensions (Dimensions)	1,1 +0,1 mm