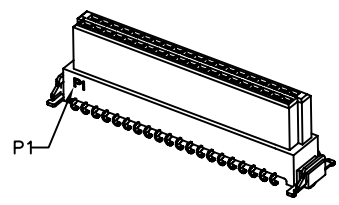
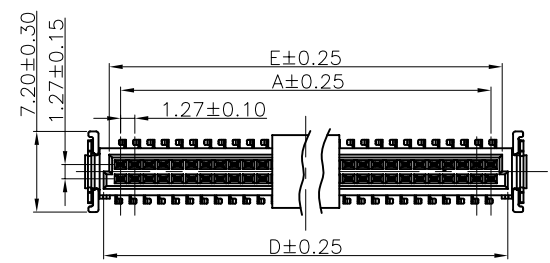


REV.	LOCAS.	DESCRIPTION	DATE	DRAWN
01	NEW	BATCH PRODUCTION INITIAL RELEASE.	2014.03.10	zongliangliu
02	△	According to the actual requirement to update the latest specification	2014.10.06	楊濤



Specifications
 Current Rating:0.8Amp
 Insulation Resistance:1000MΩ Min.
 Dielectric Withstanding Voltage:500VAC
 Contact Resistance:30mΩ Max.
 Operating Temperature:-55°C to +125°C
 Materials
 Contact Material:Phosphor Bronze△
 Insulator Material:High Temperature Thermoplastic, UL 94V-0 LCP or the equivalent material
 Colour:Black
 All materials must meet Greenconn hazardous substances control standards.△

F

F

E

E

D

D

C

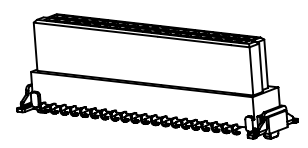
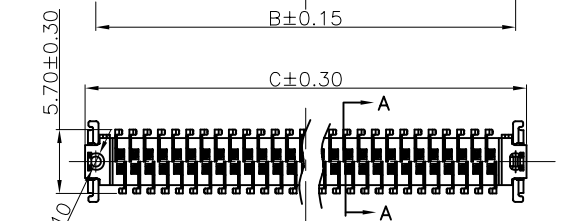
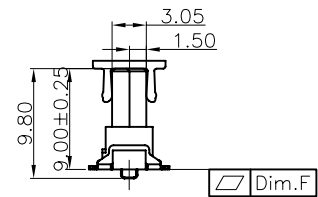
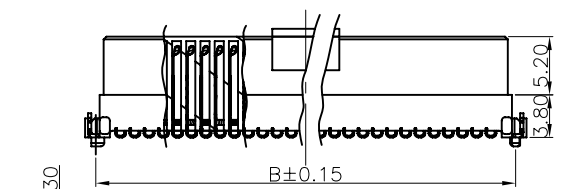
C

B

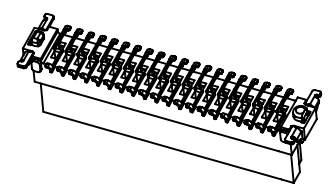
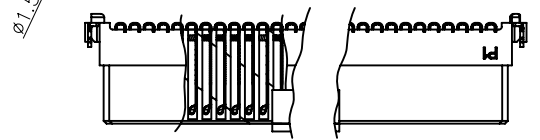
B

A

A



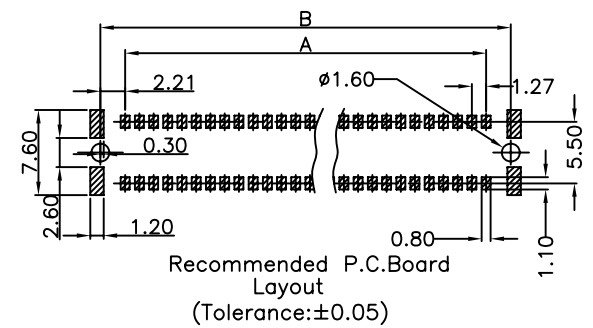
Pin No.	Dim.F
≤ 25pin	0.12
> 25pin	0.15



PIN NO.	A	B	C	D	E
2*06	6.35	10.77	13.20	9.37	8.37
2*13	15.24	19.66	22.09	18.26	17.26
2*25	30.48	34.90	37.33	33.50	32.50
2*30	36.83	41.25	43.68	39.85	38.85
2*34	41.91	46.33	48.76	44.93	43.93
2*40	49.53	53.95	56.38	52.55	51.55

Ordering Information

CBEC219 - XX XX B001 C 1 A X
 No. of Pins per Row: 06, 13, 25, 30, 34, 40
 Contact Plating: 79=5u" Au/80-160u" Matte Tin
 F= (Finished Product+CAP), Tape&Reel



格稜股份有限公司
Greenconn Corporation

GENERAL TOLERANCE		DESIGN: 楊濤	DATE: 2014.10.06	DWG. NO.	TITLE: Pitch1.27 Female Connector SMC TYPE-B SMT TYPE HIGH9.00mm 180°
X.±5.0°	X.±0.30	CHECKED: 林澤雲	DATE: 2014.10.06	CBEC219-CB1CA	
.X'±3.0°	.X±0.25	CO SIGNED: 徐軍博	DATE: 2014.10.06	PART NO.	
.XX±2.0°	.XX±0.15	APPROVED: Link	DATE: 2014.10.06	CBEC219-XX XX B001C1AX	
.XXX±1.0°	.XXX±0.10				

REV.	UNIT.	SCALE.	PAGE.
02	mm	1:1	1/1