

# Customer Information Sheet

DRAWING No.: C90-3106FXXSX-XX

SHEET 2 OF 2

IF IN DOUBT - ASK

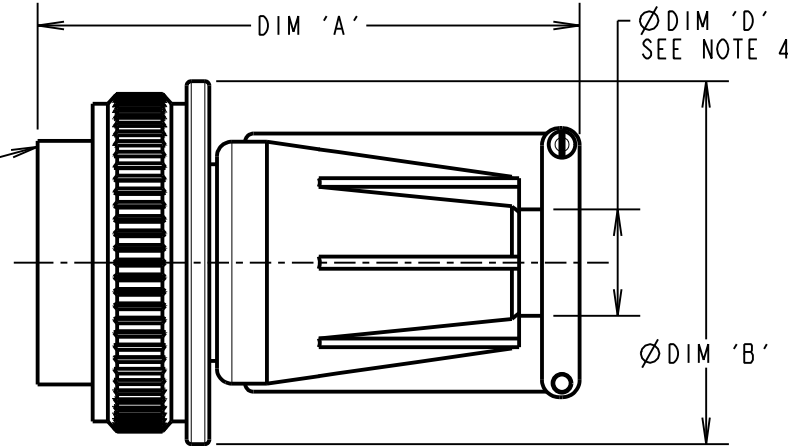
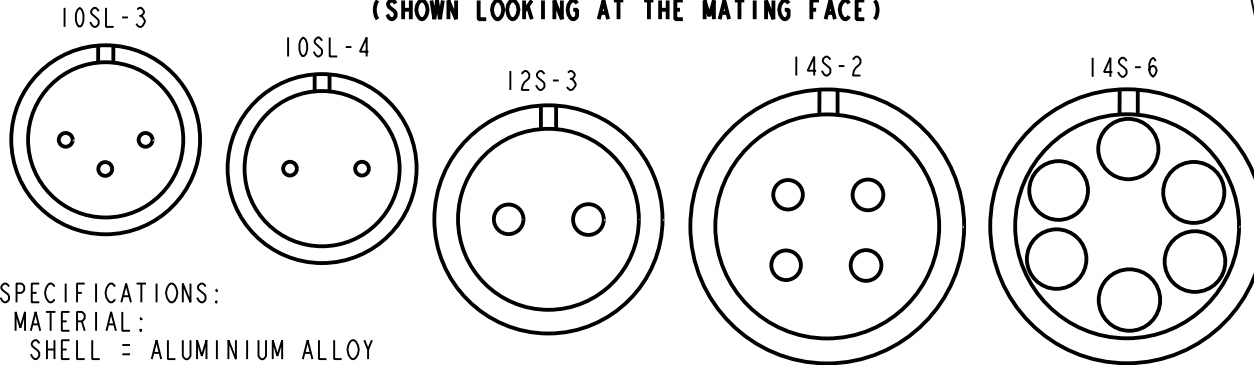
©

NOT TO SCALE

THIRD ANGLE PROJECTION

ALL DIMENSIONS IN mm

**CONTACT LAYOUT  
(SHOWN LOOKING AT THE MATING FACE)**



**SPECIFICATIONS:**

**MATERIAL:**  
SHELL = ALUMINIUM ALLOY  
INSULATOR = SYNTHETIC RUBBER  
GROMMET = SYNTHETIC RUBBER  
CONTACT = COPPER ALLOY

**FINISH:**  
SHELL = ZINC COBALT ALLOY, BLACK  
CONTACT = SILVER

**ENVIRONMENTAL:**  
OPERATING TEMPERATURE = -55°C TO +125°C

**MECHANICAL:**  
VIBRATION SENSITIVITY = 10Hz TO 500Hz, 98m/s<sup>2</sup> (10G)  
SHOCK SEVERITY = 490m/s<sup>2</sup> (50G) FOR 11ms  
WATER RESISTANCE (SEALING) = 1.8m FOR 48HRS,  
EXCEEDS IP67

**ELECTRICAL:**  
CURRENT RATING = 13A  
VOLTAGE RATING:  
10SL, 12S SHELL SIZES = 500V AC, 700V DC  
14S SHELL SIZE = 200V AC, 250V DC

**VOLTAGE PROOF:**  
10SL & 12S SHELL SIZES = 2,000V AC  
14S SHELL SIZES = 1,000V AC  
INSULATION RESISTANCE = 5,000MΩ MIN

FOR MECHANICAL/ELECTRICAL REQUIREMENTS,  
SEE COMPONENT SPECIFICATION CO45XX (LATEST ISSUE)

ORDER CODE:

**C90-3106FXXXX-XX**

SHELL SIZE (CONTACT LAYOUT):  
10SL-3, 10SL-4, 12S-3, 14S-2  
14S-6

CONTACT GENDER:  
P - MALE  
S - FEMALE

**NOTES:**

1. PRODUCT IS RoHS COMPLIANT.
2. PRODUCT IS PACKED IN BAGS.
3. RECOMMENDED WIRE SIZE 16-22 AWG.
4. CABLE CLEARANCE.
5. RECOMMENDED WIRE STRIP LENGTH = 7.5mm.

| SHELL SIZE | DIM 'A' MAX | Ø DIM 'B' MAX | 'C' THREAD | Ø DIM 'D' MAX |
|------------|-------------|---------------|------------|---------------|
| 10SL       | 54.10       | 24.10         | 5/8-24UNEF | 7.14          |
| 12S        | 54.10       | 25.30         | 3/4-20UNEF | 7.14          |
| 14S        | 55.91       | 28.53         | 7/8-20UNEF | 10.31         |

|                |      |           |        |
|----------------|------|-----------|--------|
| MSP            | 8    | 19.07.17  | 20038  |
| NAME           | ISS. | DATE      | C/NOTE |
| APPROVED:      |      | M.PERREN  |        |
| CHECKED:       |      | M.PLESTED |        |
| DRAWN:         |      | R.ADDE    |        |
| CUSTOMER REF.: |      |           |        |
| ASSEMBLY DRG:  |      |           |        |

**HARWIN**

www.harwin.com  
technical@harwin.com

THIS DRAWING AND ANY INFORMATION OR DESCRIPTIVE MATTER SET OUT HEREON ARE CONFIDENTIAL AND COPYRIGHT PROPERTY OF THE HARWIN GROUP AND MUST NOT BE DISCLOSED, LOANED, COPIED OR USED FOR MANUFACTURING, TENDERING OR FOR ANY OTHER PURPOSE WITHOUT THEIR WRITTEN PERMISSION.

**TOLERANCES**  
X. = ±1mm  
X.X = ±0.50mm  
X.XX = ±0.10mm  
X.XXX = ±0.01mm  
**ANGLES = ±5°**  
**UNLESS STATED**

**MATERIAL:**

SEE ABOVE

**FINISH:** SEE ABOVE

**S/AREA:**

mm<sup>2</sup>

**TITLE:**

STRAIGHT PLUG

**DRAWING NUMBER:**

**C90-3106FXXSX-XX**

SHT  
2 OF 2