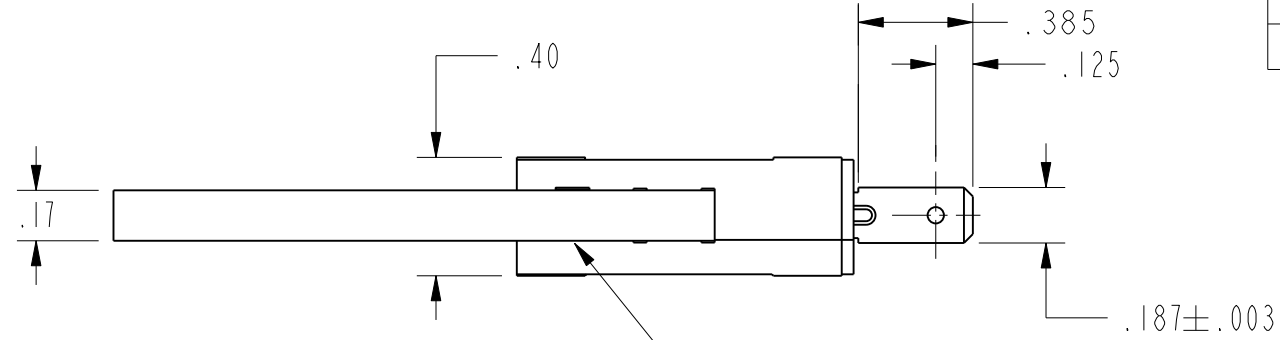
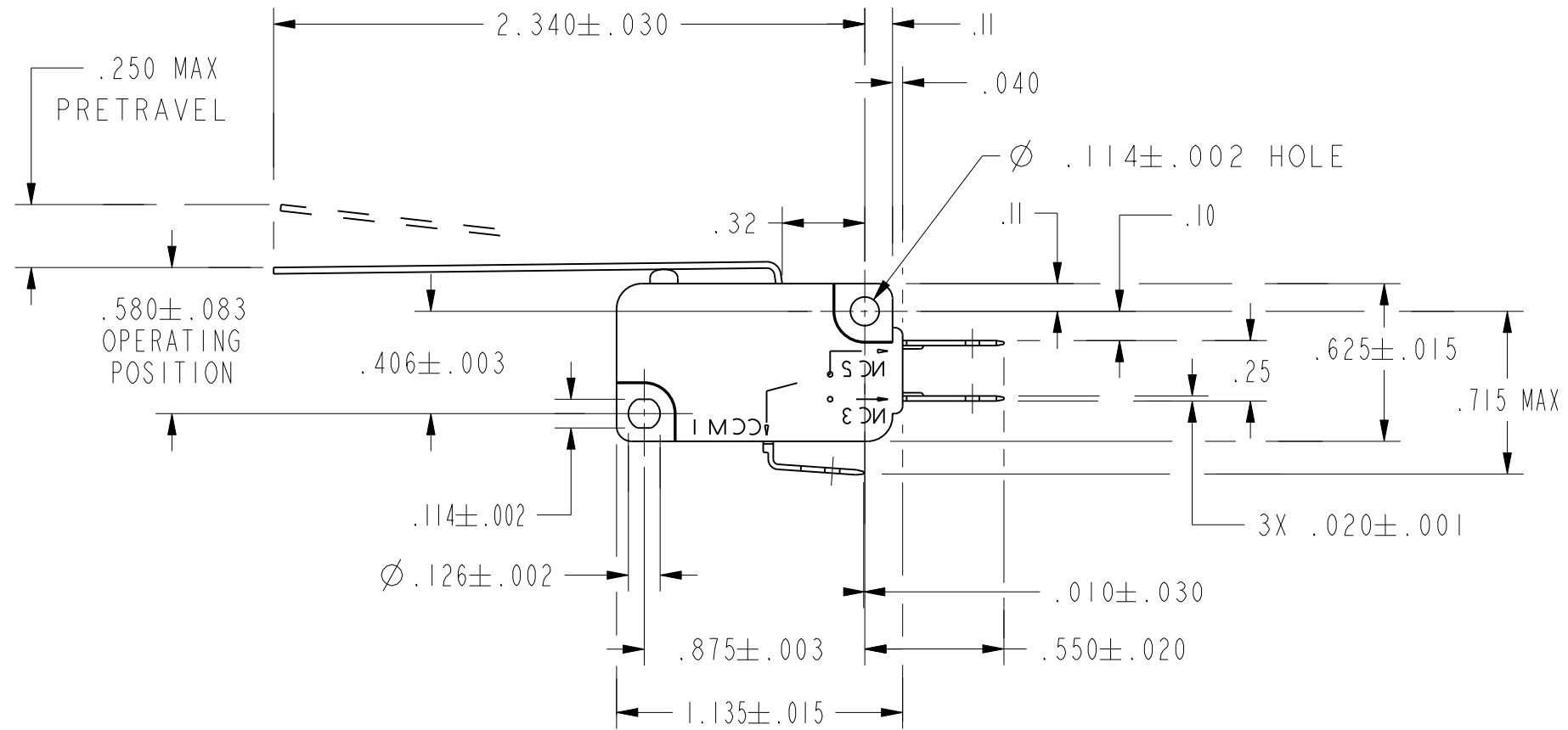


HONEYWELL PART NUMBER
-
CW-C6019

REV	DOCUMENT	CHANGED BY	CHECK
4	0041190	PK 11JUL08	ASD



CORROSION RESISTANT
STEEL ACTUATOR



RELEASE NUMBER
PR-22880

CHARACTERISTICS
OPERATING FORCE -----120 GRAMS MAX
RELEASE FORCE -----19 GRAMS MIN
DIFFERENTIAL TRAVEL -- .010-.054
OVERTRAVEL ----- .124 MIN
RELEASE TRAVEL ----- .030 MIN

ELECTRICAL DATA
CONTACT ARRANGEMENT S P D T
L215 15.1A 1/2HP 125, 250 OR 277 VAC 1/2A 125 VDC 1/4A 250 VDC; 5A 125 VAC "L"

DESIGN UNITS: INCH
TOLERANCES UNLESS NOTED:
NO PLACES X ±
ONE PLACE .X ± 0.030
TWO PLACE .XX ± 0.015
THREE PLACE .XXX ± 0.005
ANGLES X ±
THIRD ANGLE PROJECTION

DRAWN	GLH	15NOV02
CHECK	SAV	15NOV02
THIS DRAWING COVERS A PROPRIETARY ITEM AND IS THE PROPERTY OF HONEYWELL. THIS DRAWING IS NOT TO BE COPIED OR USED WITHOUT THE PERMISSION OF HONEYWELL.		
INTERPRET PER ANSI Y14.5M-1982 OTHER HONEYWELL ENGINEERING STANDARDS MAY APPLY		
Pro/ENGINEER	2D	

Honeywell				
TITLE SWITCH, BASIC				
SIZE	TYPE	CAGE CODE	DRAWING NAME	REV
B	I		V7-6C17D8-048-1	4
SCALE	-		SHEET	1 OF 1