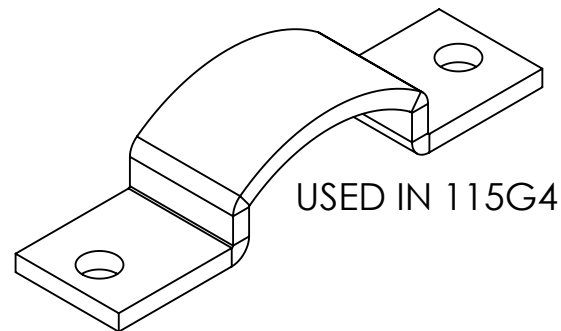
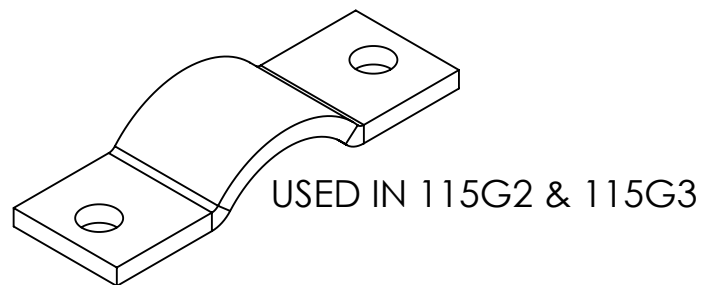
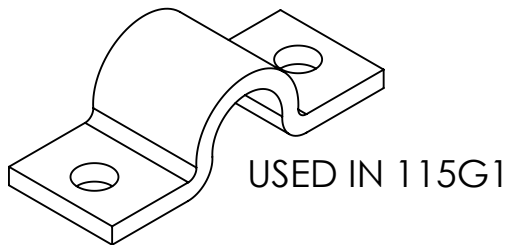
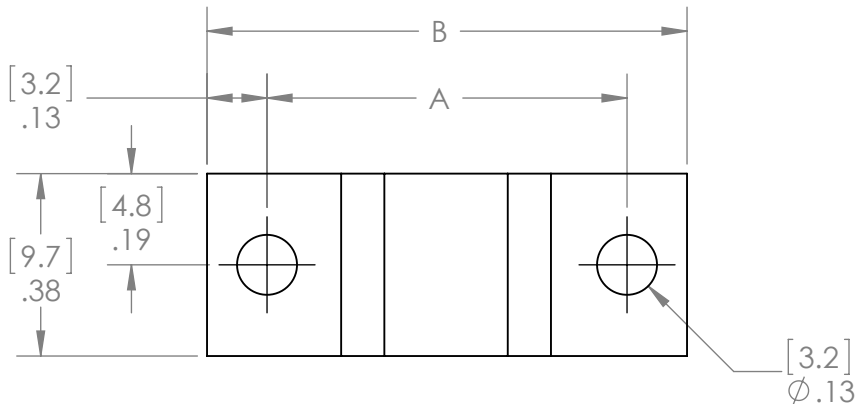


THE INFORMATION CONTAINED IN THIS DRAWING IS THE SOLE PROPERTY OF ANDERSON POWER PRODUCTS. ANY REPRODUCTION IN PART OR WHOLE WITHOUT THE WRITTEN PERMISSION OF ANDERSON POWER PRODUCTS IS PROHIBITED.

Copyright 2011

ANDERSON POWER PRODUCTS RESERVES THE RIGHT TO ALTER PRODUCT TYPES, THEIR TECHNICAL DATA, DIMENSION, STYLE AND ACCESSORIES WITHOUT PRIOR NOTIFICATION.



KIT P/N	DESC	DIM A		DIM B	
		in	mm	in	mm
115G1	2 X 2	.75	19.0	1.00	25.4
115G2	2 X 3	1.00	25.4	1.25	31.8
115G3	2 X 4	1.00	25.4	1.25	31.8
115G4	2 X 5	1.31	33.3	1.55	39.4

DIMENSIONS ARE IN:	INCH [MM]	APPROVALS			ANDERSON POWER PRODUCTS	
UNLESS OTHERWISE STATED		DRAWN	8/31/1988		TITLE POWERPOLE PAK CLAMPS	
TOLERANCES:		WR				
DECIMALS (INCH)	DECIMALS (MM)	CHECKED	8/31/1988	SIZE A		
.XX ± .02	.X ± .5	HHR				
ANGLES ±2°		MFG APPRV		DWG NO. 112019S		
SURFACE FINISH:		QC APPRV				
MACHINED 128 [3.2] ✓		ENG APPRV	8/31/1988	SCALE NONE		
MOLDED 64 [1.6] ✓		HHR				
MATERIAL:		-CAD GENERATED DRAWING- DO NOT MANUALLY UPDATE DO NOT SCALE		CADFILE 03440		
.059 thick cold rolled steel						
FINISH:				SHEET 1 OF 1		
zinc plate yellow chromate						

REV.	DESCRIPTION	APPRV	DATE
2	ECRN-15467 115G2 & 115G3 USE SAME CLAMP	TWE	9/6/2013
1	ECRN-14881 COMBINED P1-P4 IN OUTLINE DRWG	TWE	4/8/11

REVISIONS