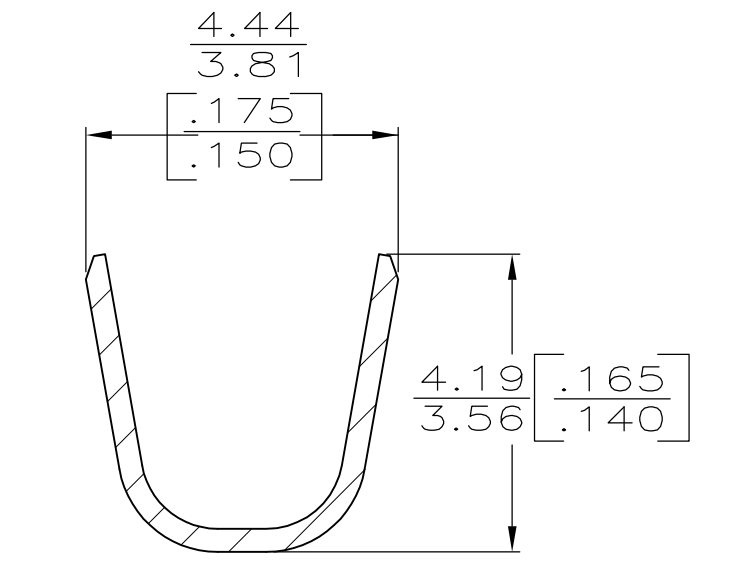
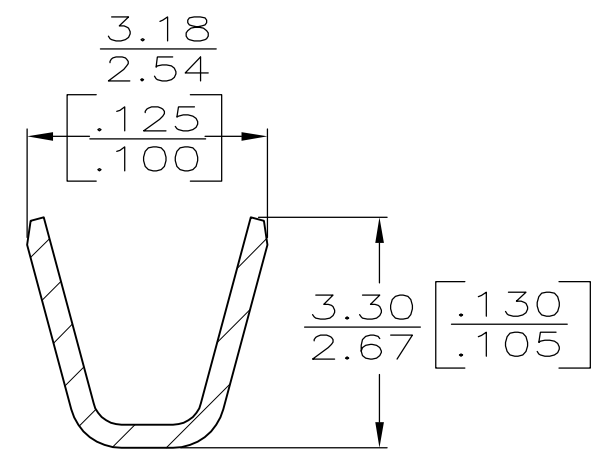
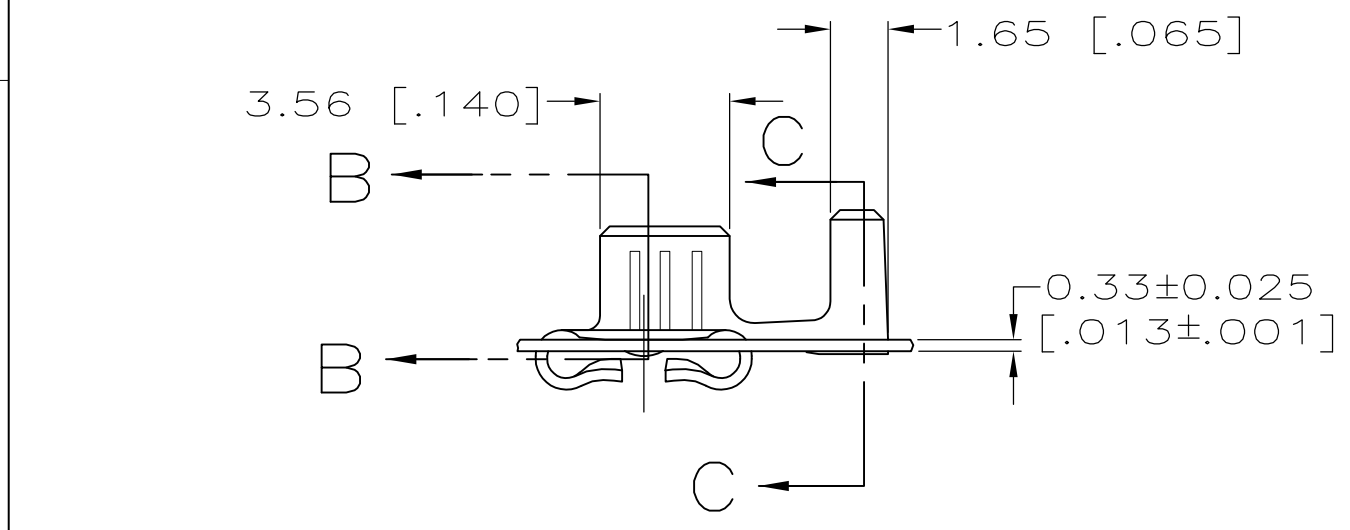
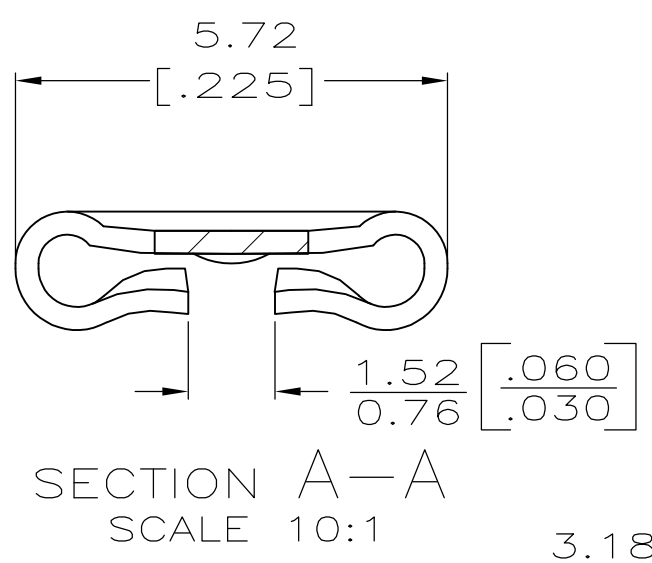
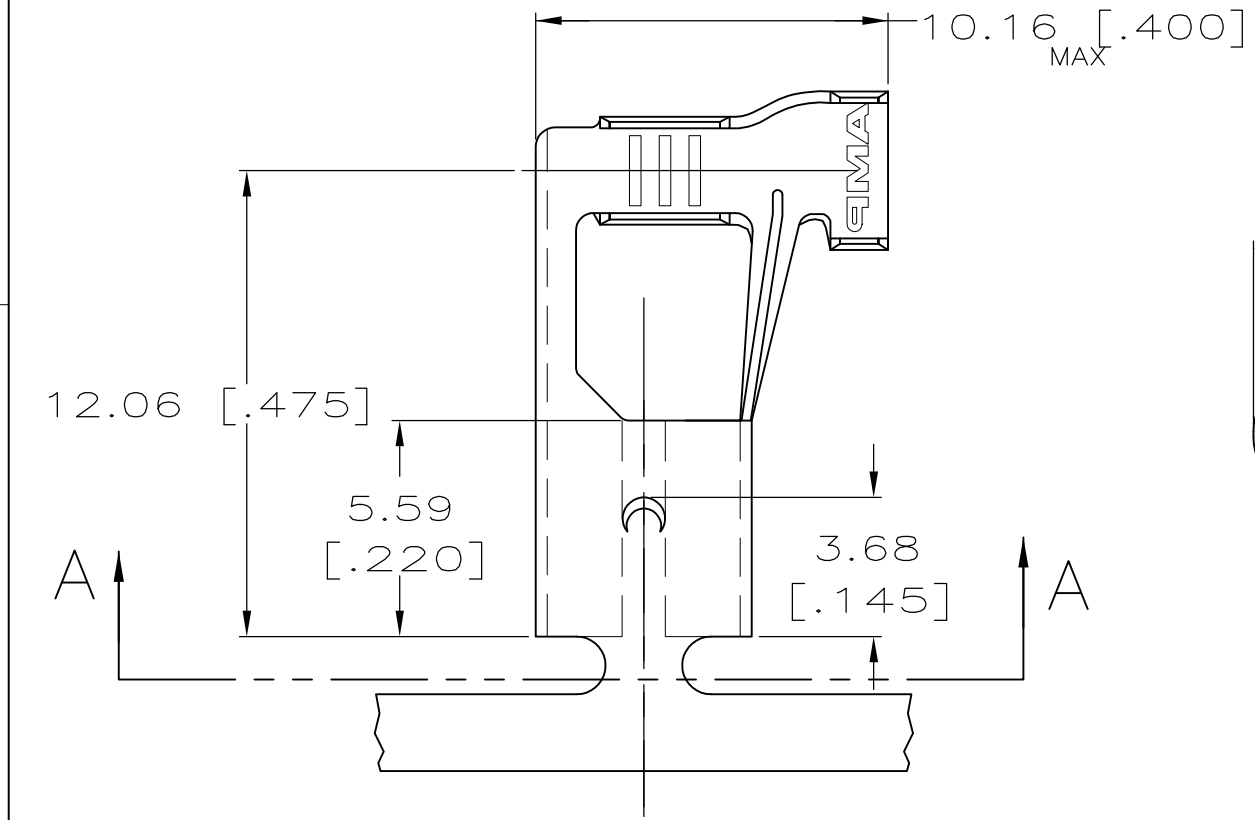


THIS DRAWING IS UNPUBLISHED. RELEASED FOR PUBLICATION  
 © COPYRIGHT - By - ALL RIGHTS RESERVED.

LOC	DIST	REVISIONS					
AF	50	P	LTR	DESCRIPTION	DATE	DWN	APVD
		D		REVISED PER ECR-12-013518	24NOV12	KH	PD



- CONTINUOUS STRIP ON REELS.
- ACCEPTS [#20-#16] AWG.
- INSULATION RANGE 2.28-3.30 [.090-.130] DIA.

F OR O	3.56 [.140]	4.78 [.188]	F	2.29 [.090]	1.34 [.053]	1.17 [.046]	1.04 [.041]	#16	#18	#20
TYPE	WIDTH	STRIP LENGTH ±0.38 [.015]	TYPE	WIDTH	±0.051 [.002]	HEIGHT	WIRE			
INSUL BARREL CRIMP		WIRE BARREL CRIMP								

THIS DRAWING IS A CONTROLLED DOCUMENT.		DWN	JR RUTH	5/11/95
DIMENSIONS: mm [INCHES]		CHK	MS FEHER	5/11/95
TOLERANCES UNLESS OTHERWISE SPECIFIED:		APVD	P DESANTIS	5/11/95
0 PLC ± -		PRODUCT SPEC		
1 PLC ± -		APPLICATION SPEC		
2 PLC ± 0.25 [.010]		114-2079		
3 PLC ± -		WEIGHT -		
4 PLC ± -		CUSTOMER DRAWING		
ANGLES ± -		SCALE 5:1		
MATERIAL BRASS		FINISH SEE TABLE		

TIN	0.81±0.025	63848-2
-	[.032±.001]	63848-1
FINISH	MATING TAB THICKNESS	PART NO

**STE** TE Connectivity

RECEPTACLE, FASTON, FLAG, 4.75 [.187] SERIES

NAME	SIZE	CAGE CODE	DRAWING NO	RESTRICTED TO
	A3	00779	C-63848	-
SCALE 5:1			SHEET 1 OF 1	REV D