



GTT Europe Ltd.

The King Centre, Barleythorpe, Oakham, Rutland, LE15 7WD, UK
TEL : +44 (0)1572 338011

SPECIFICATION FOR APPROVAL

CUSTOMER : Farnell

PRODUCT : Outdoor IP67 OMNI Antenna for LTE Wide Band

PART NO. : NA

GTT EU PART NO. : OS-LTE-11-C0

SHEET NO. : RC171115001

DATE : 2018/03/07

CUSTOMER CONCLUSION : **APPROVED**

REJECTED

LIMITED

CONDITIONAL APPROVAL

INCLUDING THIS COVER TOTAL 94 PAGES

*** PLEASE SIGN AND FAX THE RESULT TO US .**

AUTHORISED SIGNATURES



GTT Europe Ltd.

The King Centre, Barleythorpe, Oakham, Rutland, LE15 7WD, UK

TEL : +44 (0)1572 338011

Part Number : OS-LTE-11-C0

Description: Outdoor IP67 OMNI Antenna for LTE Wide Band

Table Of Contents

1.0	The drawing spec	
1.1	Antenna Assembly & packing.....	3
2.0	Assembly RoHS	
	* Other Documents	
2.1	Antenna RoHS Report.....	6

94 Pages

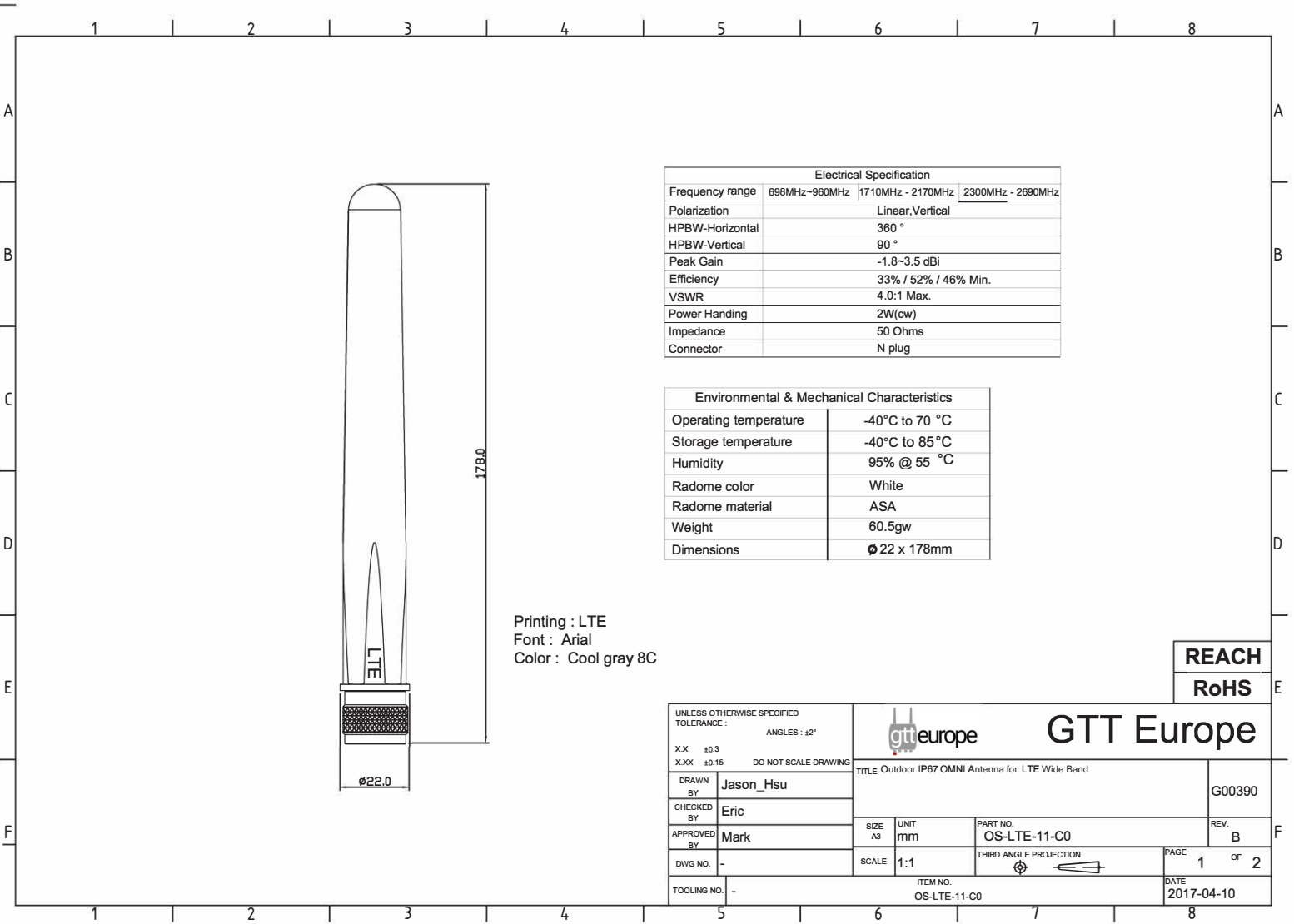


GTT Europe

Part No.	OS-LTE-11-C0	Item No.	OS-LTE-11-C0	Customer Code:	G00390
Edited By:	Jason_Hsu	Check By:	Eric	Approved By:	Mark

Standard Specification

REVISIONS				
DATE	REV.	ZONE	DESCRIPTION	ECN NO.
2017-04-10	B	p.2-2D	Modify Package SPEC(PE BAG&CATON)	17030020
2015-11-03	A	XX	NEW RELEASE	




Electrical Specification		
Frequency range	698MHz-960MHz	1710MHz - 2170MHz 2300MHz - 2690MHz
Polarization	Linear, Vertical	
HPBW-Horizontal	360 °	
HPBW-Vertical	90 °	
Peak Gain	-1.8~-3.5 dBi	
Efficiency	33% / 52% / 46% Min.	
VSWR	4.0:1 Max.	
Power Handling	2W(cw)	
Impedance	50 Ohms	
Connector	N plug	

Environmental & Mechanical Characteristics	
Operating temperature	-40°C to 70 °C
Storage temperature	-40°C to 85°C
Humidity	95% @ 55 °C
Radome color	White
Radome material	ASA
Weight	60.5gw
Dimensions	∅ 22 x 178mm

Printing : LTE
 Font : Arial
 Color : Cool gray 8C

REACH
RoHS

UNLESS OTHERWISE SPECIFIED TOLERANCE : ANGLES : ±2°		 GTT Europe	
X.X ±0.3	X.XX ±0.15 DO NOT SCALE DRAWING	TITLE Outdoor IP67 OMNI Antenna for LTE Wide Band	
DRAWN BY Jason_Hsu	CHECKED BY Eric	G00390	
APPROVED BY Mark	SIZE A3	UNIT mm	REV. B
DWG NO. -	SCALE 1:1	PART NO. OS-LTE-11-C0	PAGE 1 OF 2
TOOLING NO. -	ITEM NO. OS-LTE-11-C0		DATE 2017-04-10