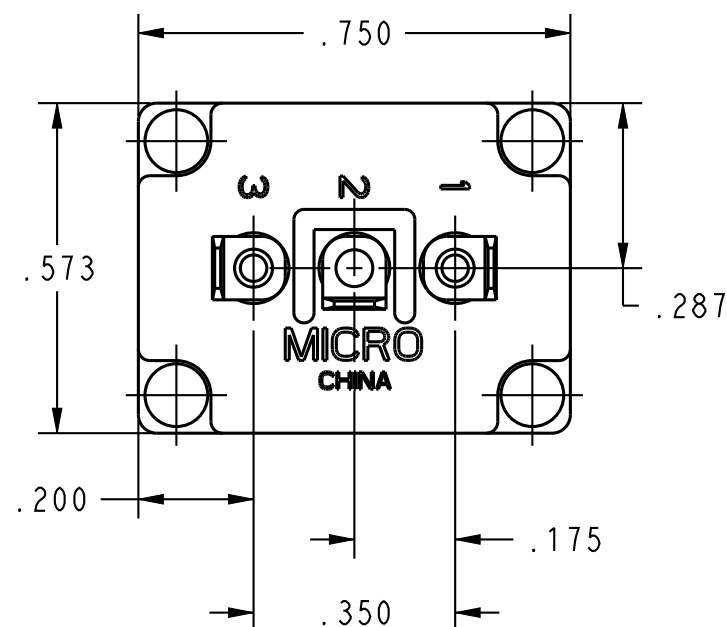
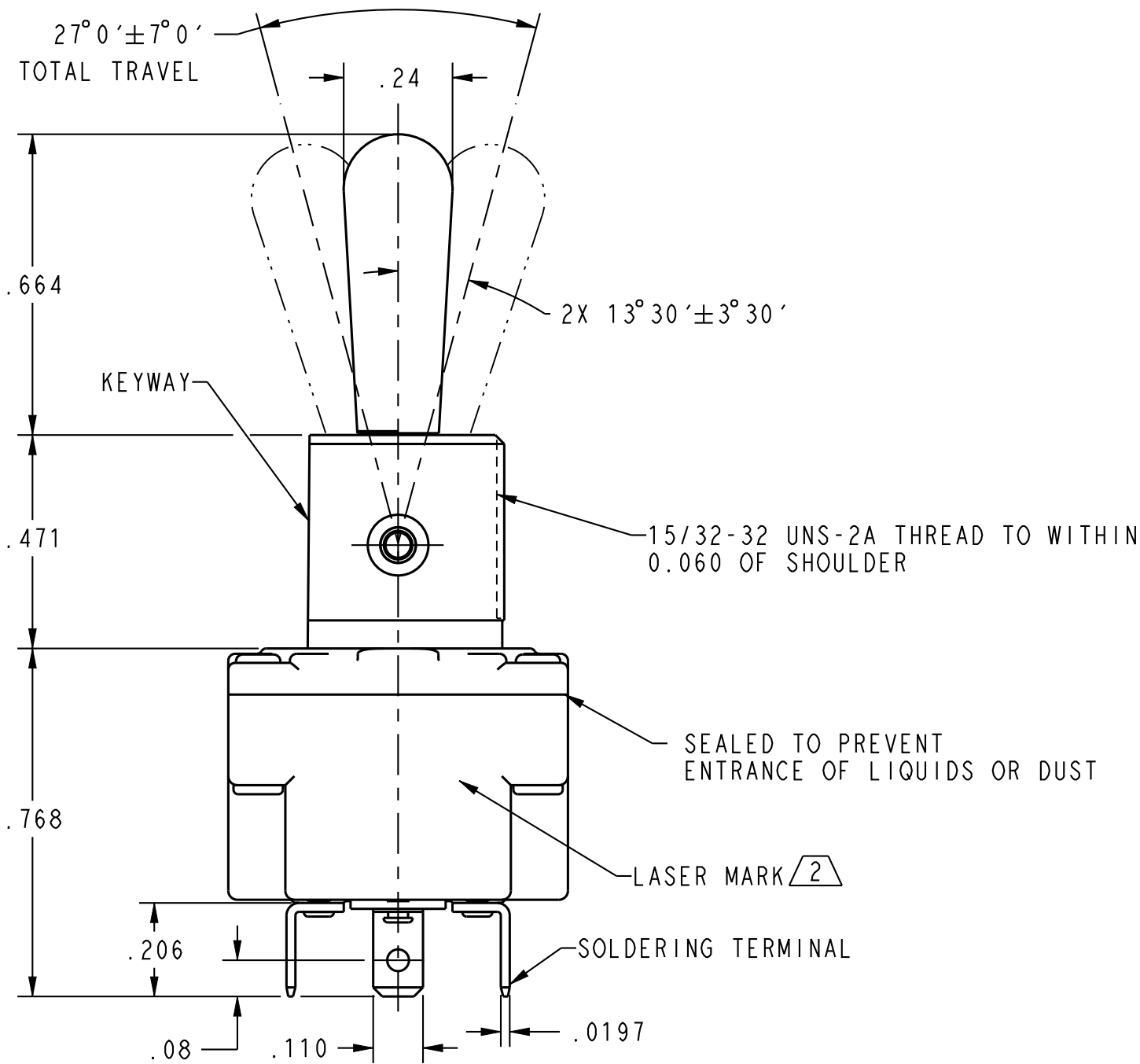
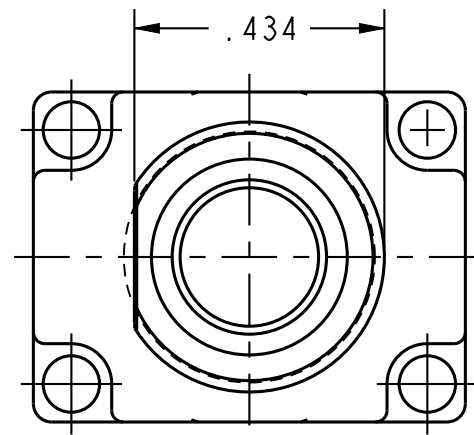


PART NUMBER
SEE TABLE

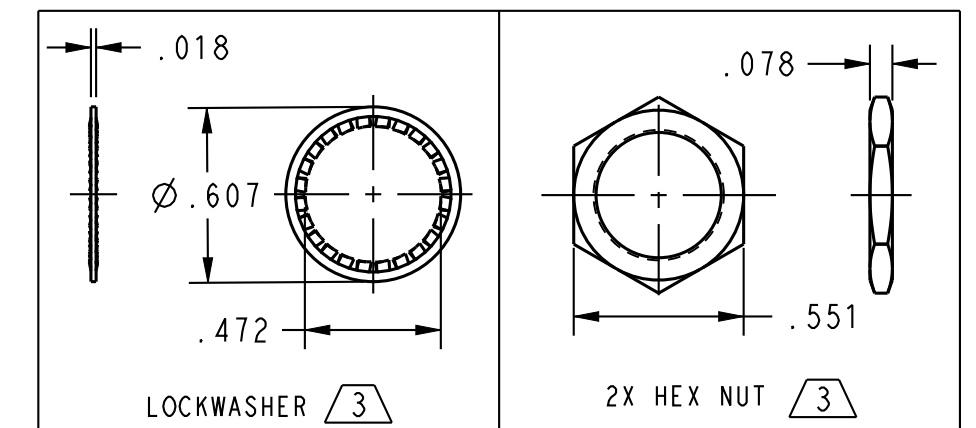
REVISION HISTORY

REV	DOCUMENT	DESCRIPTION	CHG'D BY	DATE	APPROVED
A	0125466	RELEASED	JC	2015-10-22	ZH. JACK
B	0129800	REVISED PER ECO	SMD	2016-05-06	ZH. JACK
C	0131272	REVISED PER ECO	SMD	2016-06-23	ZH. JACK
D	0132080	REVISED PER ECO	RGA	2016-07-25	ZH. JACK
E	0134674	REVISED PER ECO	RGA	2016-11-02	ZH. JACK



CATALOG LISTING	CIRCUIT MADE WITH TOGGLE LEVER IN ∇ 4			OPERATING FORCE	NUMBER OF POLES	CONTACT TYPE	CERTIFICATION MARK
	KEYWAY SIDE (1~2)	CENTER (1~2)	OPPOSITE KEYWAY (2~3)				
1MT1-1	ON	OFF	ON	3N TO 7N	SINGLE POLE	SILVER PLATED	
1MT1-2	OFF	NONE	ON	4N TO 7N			
1MT1-3	ON	NONE	ON	3N TO 7N			
1MT1-4	MOM OFF	NONE	ON				
1MT1-5	MOM ON	OFF	ON				
1MT1-6	MOM ON	NONE	OFF				
1MT1-7	MOM ON	OFF	MOM ON				
1MT1-8	MOM ON	NONE	ON				

SPECIFICATIONS	
STANDARD	UL61058-1
CONTACTS	SILVER ALLOY
SEALING	IEC 60529-2001, IP67, IP68 (EXCEPT TERMINALS)
RATING	28VDC 1A
OPERATING TEMPERATURE	-40°C TO 85°C
TERMINATIONS	SOLDER
CIRCUITRY	UL61058-1, SPDT & SPST
INITIAL DIELECTRIC STRENGTH	UL61058-1, 500VDC, 10mA/1 MINUTE BETWEEN OPEN TERMINALS
SALT SPRAY	SAE J1455, DURATION 96 HOURS WITHOUT RED RUST
VIBRATION	UL 60068-2-6, 10 TO 500Hz, 10G, DURATION 2 HOURS EACH DIRECTION
SOLDER ABILITY	UL 61058-1, 350±10°C 3s
MECHANICAL LIFE	100K, 60 CYCLES/MINUTE
ELECTRICAL LIFE	60K, 15 CYCLES/MINUTE



5 - ELECTRIC RATING WITH SILVER CONTACT

∇ 4 APPLIES ONLY TO "ON" AND "MOMENTARY ON" POSITIONS

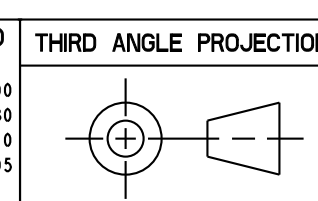
∇ 3 FURNISHED UNASSEMBLED

∇ 2 CATALOG LISTING, DATE OF MANUFACTURE, UL&CE SYMBOL, CIRCUITRY AND ELECTRICAL RATING MARKED ON SIDE OF SWITCH.

1 - SWITCH WILL WITHSTAND TEMPERATURE OF -40°C TO 85°C CONTINUOUSLY AT FULL RATED LOAD

NOTES:

UNLESS OTHERWISE SPECIFIED
DIMENSIONS ARE IN INCHES
DECIMAL TOL NO PLACE --- ±.400
1 PLACE --- ±.030
2 PLACE --- ±.010
3 PLACE --- ±.005
ANGULAR TOL - ±2° CHAMFER - ±5°



Honeywell

TITLE MINI NT TOGGLE SWITCH				
SIZE C	CAGE CODE -	DWG NO 1MT1 SERIES CHART	TYPE I	REV E
SCALE 3:1		REF. WT.	SHEET 1 of 1	
RELEASE DATE 2015-10-22		HONEYWELL CONFIDENTIAL		
DRW: J. CATHERINE 2015-07-02		THIS DOCUMENT CONTAINS PROPRIETARY INFORMATION AND SUCH INFORMATION MAY NOT BE DISCLOSED TO OTHERS FOR ANY PURPOSE, NOR USED FOR MANUFACTURING PURPOSES WITHOUT WRITTEN PERMISSION FROM HONEYWELL		
RDE: ZH. JACK 2015-10-22				
QA: CH. NIEL 2015-10-22				
CHK: ZH. SEAN 2015-10-22				

MATERIAL	
FINISH	
APPLICABLE DOCUMENTS: ASME Y14.100-2013 ASME Y14.5-2009	
COMPUTER GENERATED DRAWING: PRO/ENGINEER	