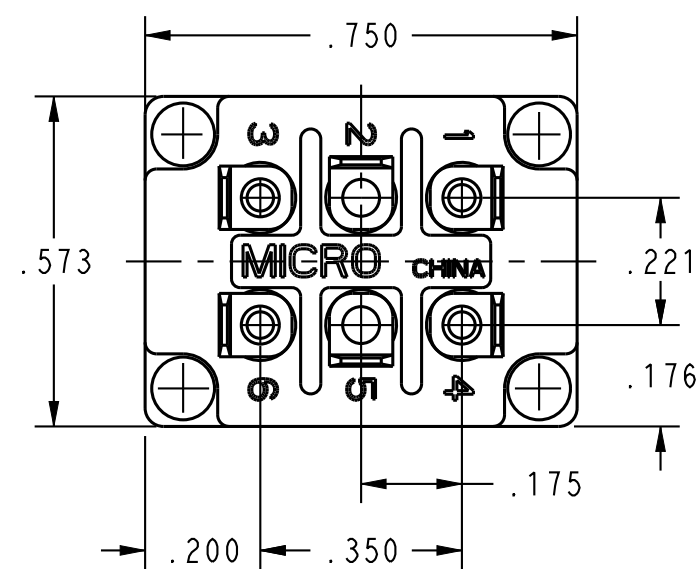
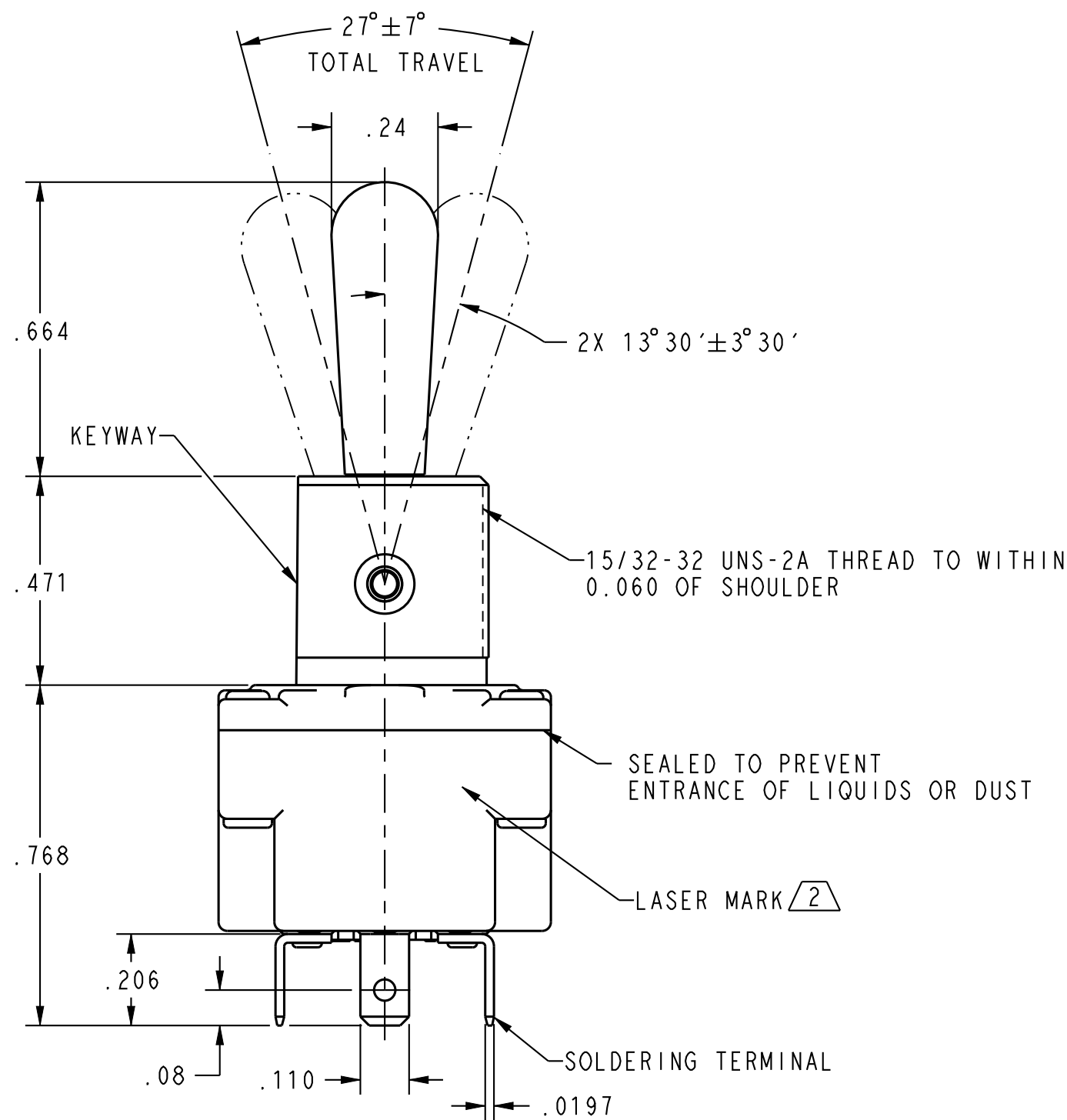
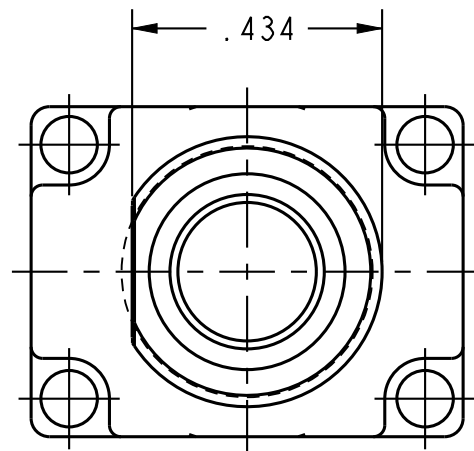


PART NUMBER  
SEE TABLE

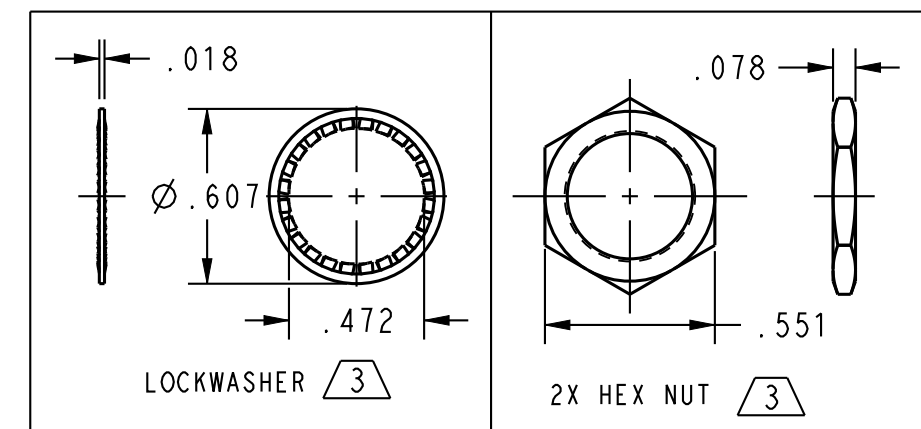
REVISION HISTORY

REV	DOCUMENT	DESCRIPTION	CHG'D BY	DATE	APPROVED
A	0125466	RELEASED	JC	2015-10-22	ZH. JACK
B	0130209	REVISED PER ECO	SMD	2016-05-18	ZH. JACK
C	0131272	REVISED PER ECO	SMD	2016-06-23	ZH. JACK
D	0134672	DIM. .551 WAS .590 AT ZONE B1	SMD	2016-11-02	ZH. JACK



CATALOG LISTING	CIRCUIT MADE WITH TOGGLE LEVER IN $\triangle 4$			NUMBER OF POLES	CONTACT TYPE	CERTIFICATION MARK
	KEYWAY SIDE (1-2, 4-5)	CENTER (1-2, 4-5)	OPPOSITE KEYWAY (2-3, 5-6)			
2MT1-1	ON	OFF	ON	DOUBLE POLE	SILVER PLATE	
2MT1-2	OFF	NONE	ON			
2MT1-3	ON	NONE	ON			
2MT1-4	MOM OFF	NONE	ON			
2MT1-5	MOM ON	OFF	ON			
2MT1-6	MOM ON	NONE	OFF			
2MT1-7	MOM ON	OFF	MOM ON			
2MT1-8	MOM ON	NONE	ON			

SPECIFICATIONS	
STANDARD	UL 61058-1
CONTACTS	SILVER ALLOY
SEALING	IEC 60529-2001, IP67, IP68 (EXCEPT TERMINALS)
RATING	28VDC 5A
OPERATING TEMPERATURE	-40°C TO 85°C
TERMINATIONS	SOLDER
CIRCUITRY	UL 61058-1, DPDT & DPST
INITIAL DIELECTRIC STRENGTH	UL 61058-1, 500VDC, 10mA/1 MINUTE BETWEEN OPEN TERMINALS
SALT SPRAY	SAE J1455, DURATION 96 HOURS WITHOUT RED RUST
VIBRATION	UL 60068-2-6, 10 TO 500Hz, 10G, DURATION 2 HOURS EACH DIRECTION
SOLDER ABILITY	UL 61058-1, 350±10°C, 3s
MECHANICAL LIFE	100K, 60 CYCLES/MINUTE
ELECTRICAL LIFE	25K, 15 CYCLES/MINUTE



5 - ELECTRIC RATING WITH SILVER CONTACT

$\triangle 4$  - APPLIES ONLY TO "ON" AND "MOMENTARY ON" POSITIONS

$\triangle 3$  - FURNISHED UNASSEMBLED

$\triangle 2$  - CATALOG LISTING, DATE OF MANUFACTURE, UL&CE SYMBOL, CIRCUITRY AND ELECTRICAL RATING MARKED ON SIDE OF SWITCH.

1 - SWITCH WILL WITHSTAND TEMPERATURE OF -40°C TO 85°C CONTINUOUSLY AT FULL RATED LOAD

NOTES:

UNLESS OTHERWISE SPECIFIED DIMENSIONS ARE IN INCHES DECIMAL TOL NO PLACE --- ±.400 1 PLACE --- ±.030 2 PLACE --- ±.010 3 PLACE --- ±.005 ANGULAR TOL - ±2° CHAMFER - ±5°	THIRD ANGLE PROJECTION 
MATERIAL	
FINISH	
APPLICABLE DOCUMENTS: ASME Y14.100-2013 ASME Y14.5-2009	
COMPUTER GENERATED DRAWING: PRO/ENGINEER	

<b>Honeywell</b>				
TITLE <b>MINI NT TOGGLE SWITCH</b>				
SIZE <b>C</b>	CAGE CODE -	DWG NO <b>2MT1-SERIES-CHART</b>	TYPE <b>I</b>	REV <b>D</b>
SCALE <b>4:1</b>	REF WT:	SHEET 1 of 1		
RELEASE DATE 2015-10-22	HONEYWELL CONFIDENTIAL			
DRW: J. CATHERINE 2015-07-02	THIS DOCUMENT CONTAINS PROPRIETARY INFORMATION AND SUCH INFORMATION MAY NOT BE DISCLOSED TO OTHERS FOR ANY PURPOSE, NOR USED FOR MANUFACTURING PURPOSES WITHOUT WRITTEN PERMISSION FROM HONEYWELL			
RDE: ZH. JACK 2015-10-22				
QA: CH. NIEL 2015-10-22				
CHK: ZH. SEAN 2015-10-22				