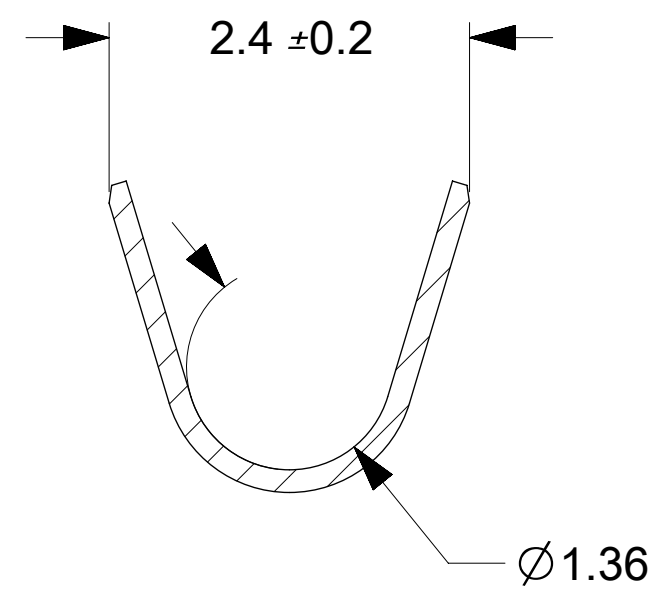


SECTION Y-Y
SCALE 20:1
ROTATED 180°



SECTION Z-Z
SCALE 20:1
ROTATED 180°

NOTES:

1. MATERIAL: COPPER ALLOY
2. FINISH:
2.5µm MIN OVERALL ELECTROPLATE MATTE TIN OVER
1.25µm MIN OVERALL ELECTROPLATED MATTE NICKEL
3. PRODUCT SPECIFICATION: 2042200000-PS
4. APPLICATION SPECIFICATION: 2042200000-AS
5. PACKAGING SPECIFICATION: 2043010000-PK
6. THIS CRIMP TERMINAL TO BE USED WITH ASSEMBLY SERIES 204220.
7. THIS CRIMP TERMINAL MATES WITH RECEPTACLE CRIMP TERMINAL SERIES 2042261.
8. THIS PART CONFORMS TO CLASS 'B' REQUIREMENTS OF COSMETIC SPECIFICATION PS-45499-002.
9. WIRE SPECIFICATIONS:
AWG: 22 and 24 awg
INSULATION OD RANGE: 0.95mm - 1.4mm
10. CRIMP TOOLING:
APPLICATOR PART NUMBER: 638083700
HAND TOOL PART NUMBER: 2002180400

PRE-RELEASE
REFERENCE
USE ONLY

THIS DRAWING CONTAINS INFORMATION THAT IS PROPRIETARY TO MOLEX ELECTRONIC TECHNOLOGIES, LLC AND SHOULD NOT BE USED WITHOUT WRITTEN PERMISSION											
QUALITY SYMBOLS		GENERAL TOLERANCES (UNLESS SPECIFIED)			DIMENSION UNITS		SCALE				
▽ = 0 ▽ = 0 ▽ = 0 ▽ = 0 ▽ = 0 ▽ = 0 ▽ = 0 ▽ = 0 ▽ = 0 ▽ = 0		mm			15:1		15:1				
DRWN: TGREGORI		ANGULAR TOL ± °			DRWN BY		DATE		RECEPTACLE CRIMP TERMINAL SQUBA 1.8		
2018/03/02		4 PLACES ±			TGREGORI		2018/01/03				
EC NO: 173063		3 PLACES ±			CHKD BY		DATE		PRODUCT CUSTOMER DRAWING		
DRWN: TGREGORI		2 PLACES ±			APPR BY		DATE				
CHKD:		1 PLACE ± 0.2			RHODGE		2018/01/26		SERIES		
REV APPR:		0 PLACES ±			DRAWING SIZE		THIRD ANGLE PROJECTION		MATERIAL NUMBER		
A2		DRAFT WHERE APPLICABLE MUST REMAIN WITHIN DIMENSIONS			D				CUSTOMER		
					204301		2043010001		DOCUMENT NUMBER		
					2043010000-SD		PSD		DOC PART		SHEET NUMBER
					000		1 OF 1				