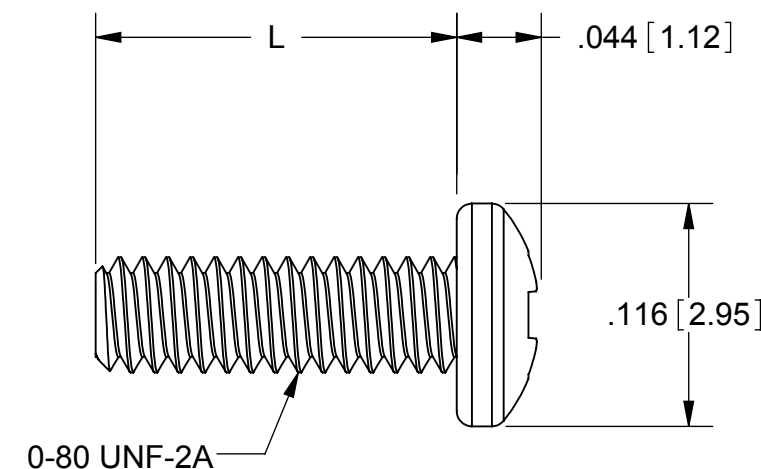
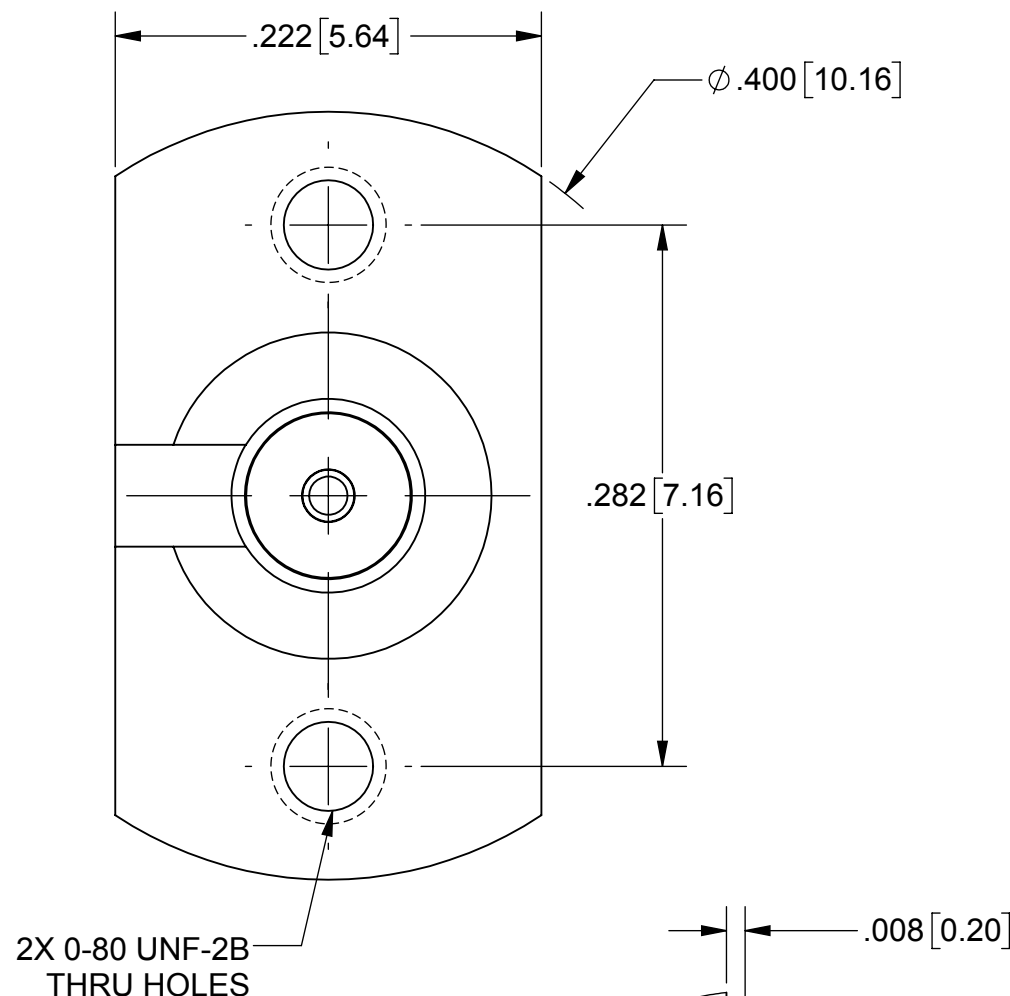
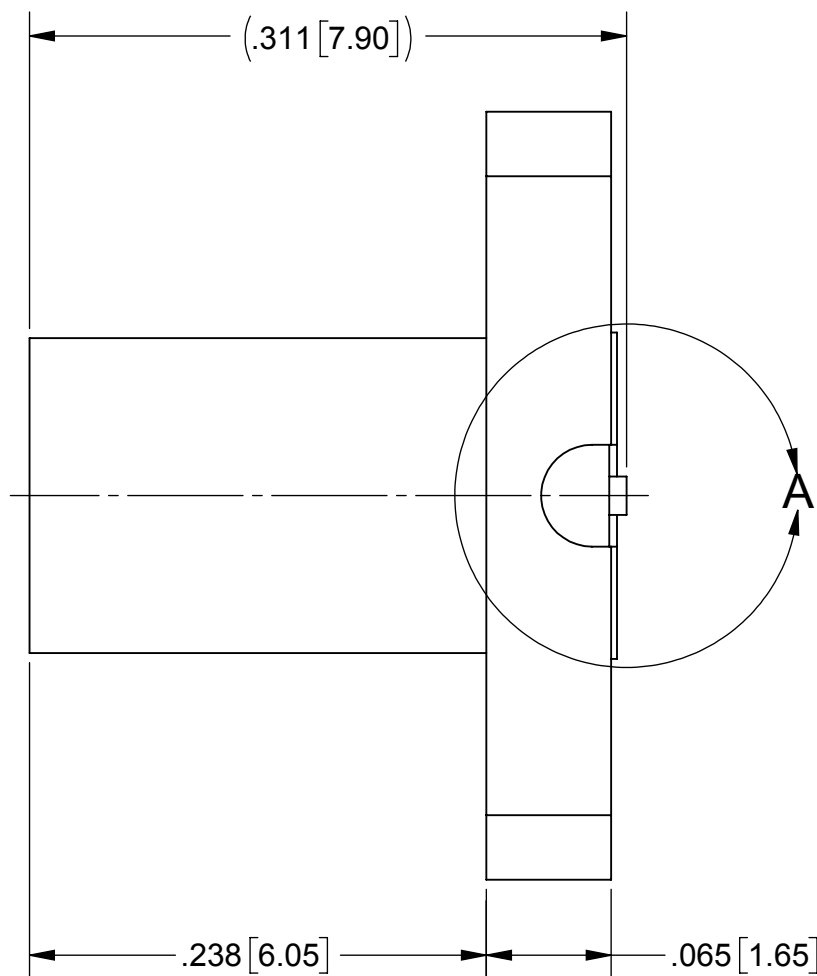
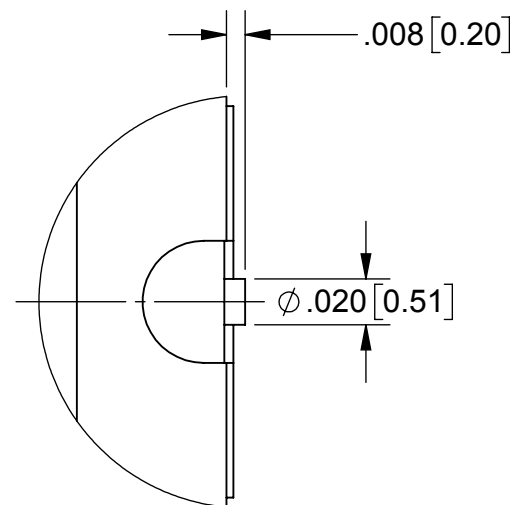


# PRODUCT DATA DRAWING

| REVISION HISTORY |             |       |          |
|------------------|-------------|-------|----------|
| REV              | DESCRIPTION | DATE  | APPROVED |
| -                | DCN 47284   | 03/18 | TMW      |
|                  |             |       |          |



| SCREW OPTIONS | L    |
|---------------|------|
| FOR -1S       | .188 |
| FOR -2S       | .250 |



DETAIL A  
SCALE 12 : 1

**MATERIAL:**  
**BODY & INSERT:** STAINLESS STEEL PER AMS-5640, ALLOY UNS S30300, TYPE 1 AND ASTM A582, TYPE 303, CONDITION A.  
**CONTACT:** BERYLLIUM COPPER PER ASTM B196, ALLOY No. UNS C17300, TD04.  
**INSULATOR:** PTFE PER ASTM D1710, TYPE 1, GRADE 1, CLASS B  
**FINISH:**  
**BODY & SCREWS:** PASSIVATED PER AMS 2700.  
**CONTACT:** GOLD PER ASTM B488, TYPE II, CODE C, CLASS 1.27, OVER NICKEL PER AMS-QQ-N-290, CLASS 1, .00005" MIN.  
**PERFORMANCE:**  
**IMPEDANCE:** 50 OHMS  
**FREQ. RANGE:** DC TO 40.0 GHz

| SV P/N          | DESCRIPTION           | PCB THICKNESS |
|-----------------|-----------------------|---------------|
| SF1211-66344-1S | INCL. TWO .188 SCREWS | .005 TO .123  |
| SF1211-66344-2S | INCL. TWO .250 SCREWS | .060 TO .185  |
| SF1211-66344    | NO SCREWS             | .005 TO .373  |

|   |  |  |  |
|---|--|--|--|
| MATERIAL: SEE NOTES   | DIMENSIONS ARE IN INCHES TOLERANCES:<br>FRACTIONAL: ±1/64 ANGULAR: X° ±1'0"<br>X°X' ±15' | UNLESS OTHERWISE SPECIFIED<br>1) ALL DIMENSIONS ARE IN INCHES (MILLIMETERS)<br>2) ALL DIMENSIONS ARE AFTER PLATING.<br>3) BREAK CORNERS & EDGES .005 R. MAX.<br>4) CHAM. 1ST & LAST THREADS.<br>5) SURFACE ROUGHNESS 63 MIL-STD-10.<br>6) DIA.'S ON COMMON CENTERS TO BE CONCENTRIC WITHIN T.I.R.<br>7) REMOVE ALL BURRS | <br>2400 Centrepark West Drive, Suite 100<br>West Palm Beach, FL 33409<br>TITLE: SMP JACK 2 HOLE FLANGE WITH MOUNTING SCREWS |
| FINISH: SEE NOTES   | DECIMAL: X ±.030<br>.XX ±.010<br>.XXX ±.005  | INTERPRET DIMENSIONS AND TOLERANCES PER ASME Y14.5M - 1994   |  |
| SURFACE AREA: N/A   | THIRD ANGLE PROJECTION   | DRAWN: VB 03/15/18   | SIZE: B CAGE CODE: 95077 DWG. NO. SF1211-66344-XS  |
| PROPRIETARY<br>THE INFORMATION CONTAINED IN THIS DRAWING IS THE SOLE PROPERTY OF SV MICROWAVE, INC. ANY REPRODUCTION IN PART OR AS A WHOLE WITHOUT THE WRITTEN PERMISSION OF SV MICROWAVE, INC IS PROHIBITED. |  | CHECKED: TMW 03/15/18  | SCALE: 10:1  |
|   |  | APPROVED: TMW 03/15/18   | SHEET 1 OF 1   |