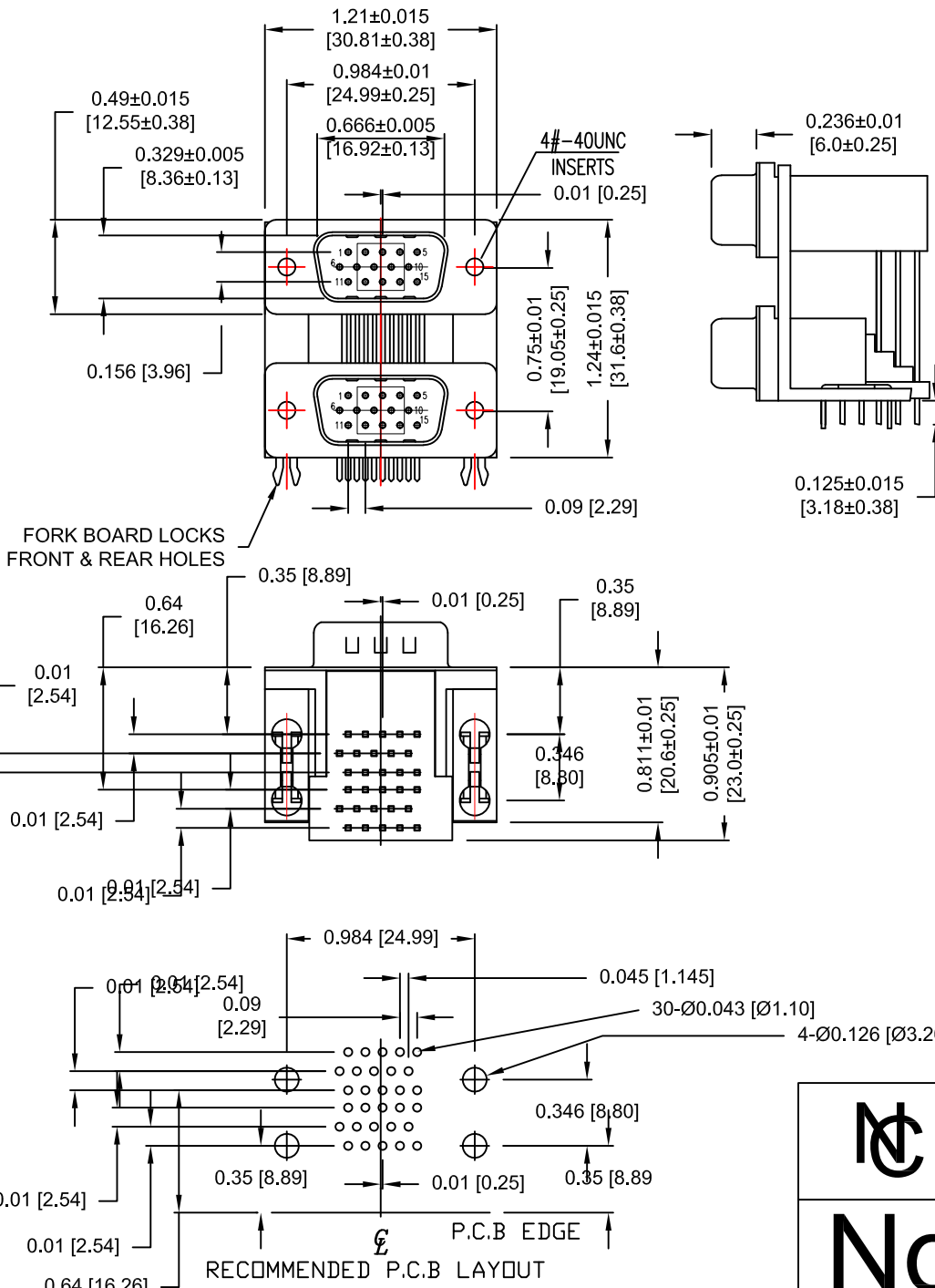


DESCRIPTION: 0.750 CENTER DUAL PORT D-SUB - MALE OVER MALE



ELECTRICAL CHARACTERISTICS

- VOLTAGE: 250 VAC (rms) Max.
- CURRENT RATING: 3 AMPS PER CONTACT
- CONTACT RESISTANCE: 25 Milliohms Max.
- INSULATION RESISTANCE: 5000 MOhms Min.
- DIELECTRIC WITHSTANDING: 1000 VAC (rms)
- TOTAL MATING FORCE: 6.0 Kgf Max.
- TOTAL UNMATING FORCE: 1.2 Kgf Min.
- OPERATING TEMPERATURE: -55°C TO +85°C

MATERIAL CHARACTERISTICS

- HOUSING: PA9T, UL94V-0, BLACK
- CONTACTS: COPPER ALLOY
- SHELL: SPCC
- BOARDLOCK: COPPER ALLOY
- BRACKET: ZINC ALLOY
- SCREWLOCK: COPPER ALLOY

PLATING CHARACTERISTICS

- CONTACTS: GOLD FLASH OVER NICKEL AT CONTACT AREA
TIN PLATED OVER NICKEL AT THE SOLDER AREA
- SHELL: NICKEL PLATED
- BOARDLOCK: TIN PLATED
- BRACKET: NICKEL PLATED
- SCREWLOCK: NICKEL PLATED

178-YYY-613R497

- SERIES _____
- POSITIONS _____
- H15 _____
- GENDER _____
- 51 = MALE OVER MALE
- SHELL PLATING _____
- 3 = NICKEL
- RoHS COMPLIANT (HIGH TEMP. PROCESS) _____
- HARDWARE OPTIONS _____
- 49 = 4-40 INSERTS/BOARD LOCKS
- PLATING OPTIONS _____
- 7 = GOLD FLASH MATING AREA WITH TIN TAILS

RoHS COMPLIANT



THESE DRAWINGS AND SPECIFICATIONS ARE THE PROPERTY OF NorComp AND SHALL NOT BE REPRODUCED, COPIED OR USED AS THE BASIS FOR THE MANUFACTURE OF SALE OF APPARATUS WITHOUT WRITTEN PERMISSION

NorComp

DRAWN: B. BRIDGES		DATE: 02-15-18	
CHECKED:		DATE:	
SCALE: NTS	SHEET 1 OF 1	REV 0	
DWG NO. 178-H15-613R497			