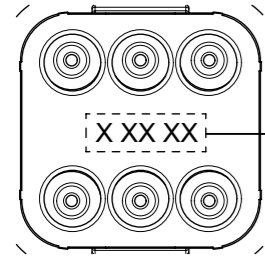
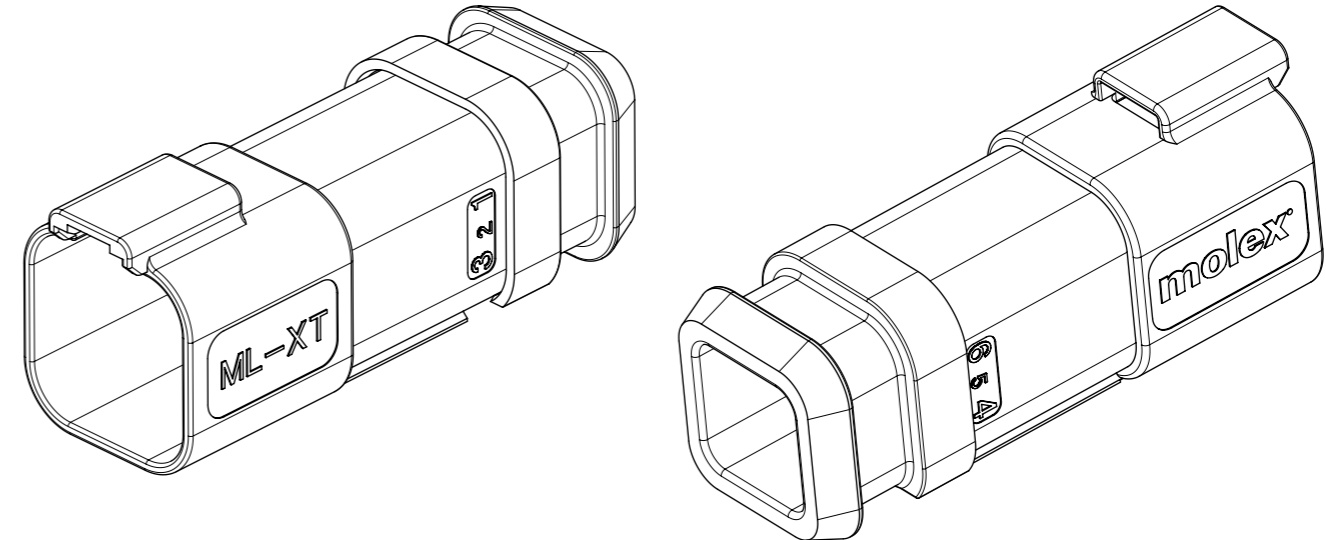
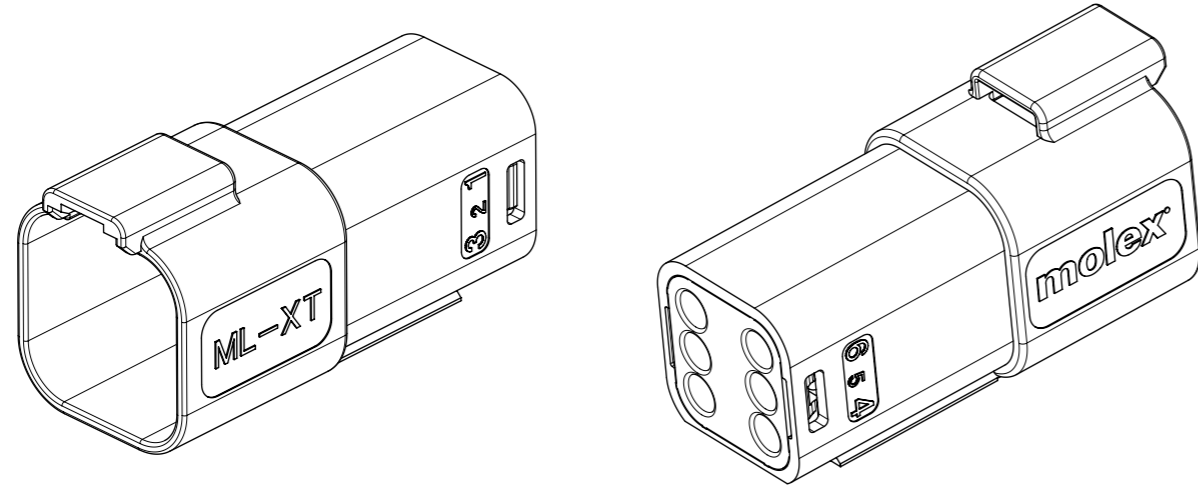


**NOTES**  
1. SEE SHEETS 2 TO 7 FOR ALL UNSPECIFIED NOTES, DIMENSIONS AND PART NUMBERS

THIS DRAWING CONTAINS INFORMATION THAT IS PROPRIETARY TO MOLEX ELECTRONIC TECHNOLOGIES, LLC AND SHOULD NOT BE USED WITHOUT WRITTEN PERMISSION												
<b>QUALITY SYMBOLS</b> ▽A = 0 ▽E = 0 ▽F = 0 ▼ = 0 ▽C = 0 ⊗ = 0 ■ = 0 ▽ = 0	SEE LONG TEXT EC NO: 122579 DRWN: JFLETCHER CHK'D: FDUGGAN APPR: JDWALLACE	GENERAL TOLERANCES (UNLESS SPECIFIED)		DIMENSION UNITS	SCALE							
		ANGULAR TOL ± 2.0 °		mm	1.5:1							
		4 PLACES ±		DRWN BY	DATE	6CCT ML-XT CV CONNECTOR						
		3 PLACES ±		JFLETCHER	2015/11/04							
		2 PLACES ± 0.1		CHK'D BY	DATE	PRODUCT CUSTOMER DRAWING						
		1 PLACE ± 0.2		FDUGGAN	2015/12/07							
		0 PLACES ±		APPR BY	DATE	SERIES		MATERIAL NUMBER	CUSTOMER			
		DRAFT WHERE APPLICABLE MUST REMAIN WITHIN DIMENSIONS		JALEXANDER	2015/12/08	93443	SEE CHART	GENERAL MARKET				
				DRAWING SIZE	THIRD ANGLE PROJECTION	DOCUMENT NUMBER		DOC TYPE	DOC PART	SHEET NUMBER		
				A3		934430040		PSD	000	1 OF 7		

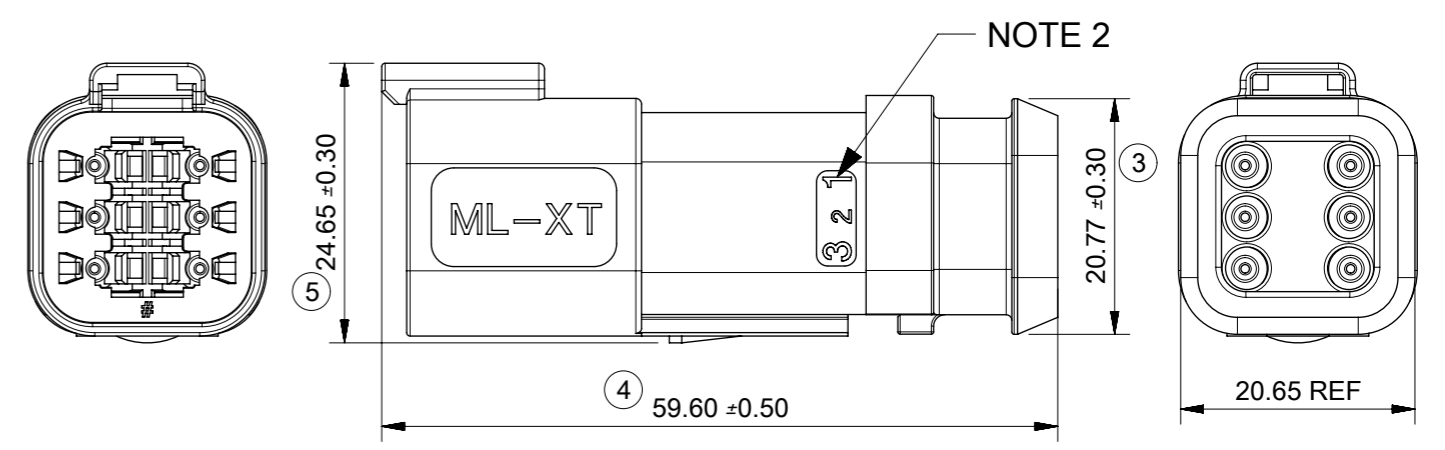
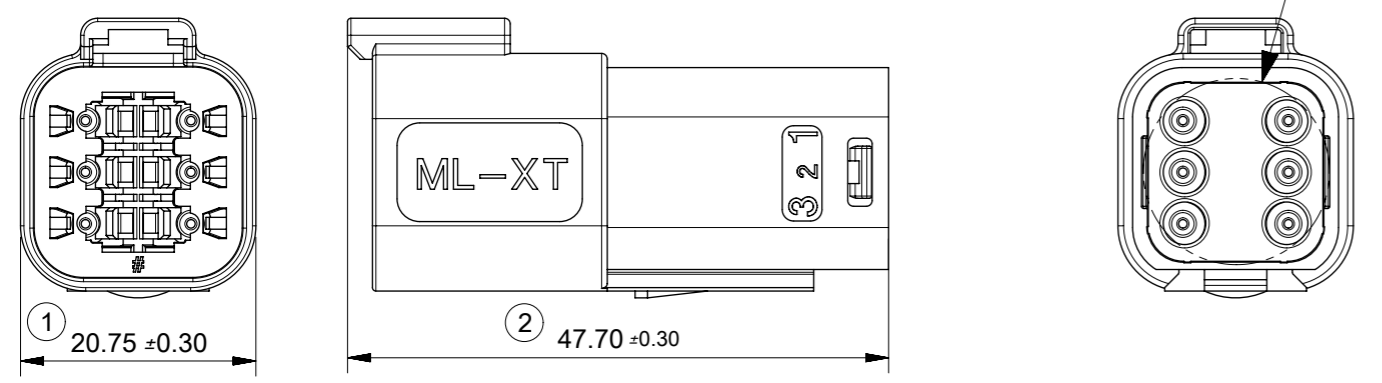
6CCT RECEPTACLE CONNECTOR

6CCT RECEPTACLE CONNECTOR WITH HEATSHRINK HOUSING ULTRASONICALLY WELDED IN PLACE



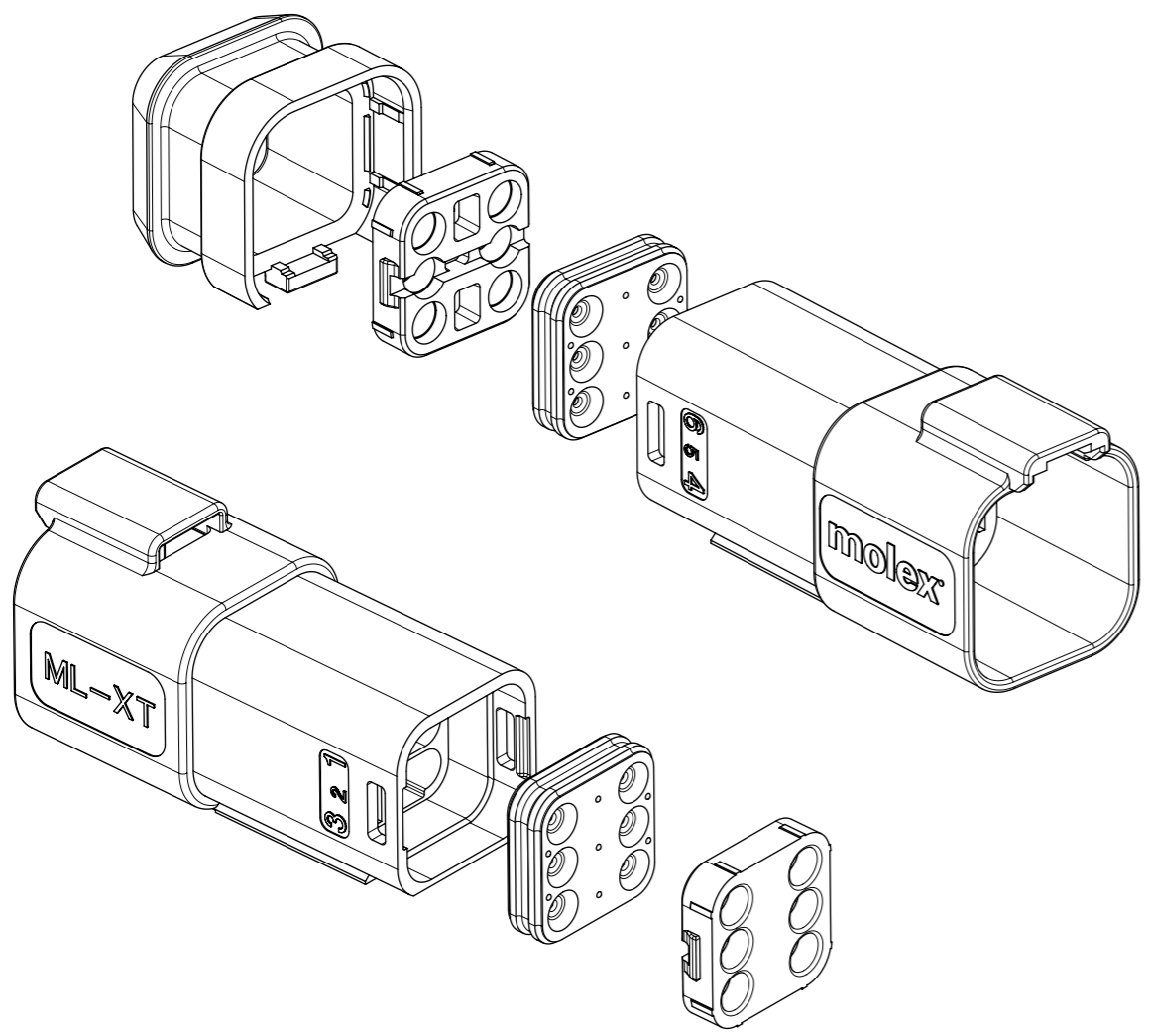
DATE CODE: X XX XX  
 X — DAY: 1 - 7  
 X — WEEK: 01 - 52  
 X — YEAR: 00 - 99  
 # — MACHINE NO. 1  
 EXAMPLE: 11315 = DAY 1, WEEK 13, YEAR 15  
 i.e. 23rd OF MARCH 2015

DETAIL B  
 SCALE 2:1



1. MATERIAL  
 HOUSING: NYLON 30%GF  
 BACK SEAL: HIGH CONSISTENCY RUBBER
  2. CIRCUIT IDENTIFICATION
  3. JACKET RANGE LARGE = Ø2.23MM TO 3.68MM (SEAL COLOUR: LIGHT BLUE)  
 JACKET RANGE SMALL = Ø1.35MM TO 3.05MM (SEAL COLOUR: BURNT ORANGE)
  4. SEE SHEET 3 FOR FINAL PART NUMBER
  5. SEE 934430010 PS P FOR PRODUCT SPECIFICATION
  6. SEE 934430002 PS K FOR PACKAGING SPECIFICATION
- INSPECTION NUMBERS 1 - 50 RESERVED FOR SHEET 2  
 LAST INSPECTION NO. 5

THIS DRAWING CONTAINS INFORMATION THAT IS PROPRIETARY TO MOLEX ELECTRONIC TECHNOLOGIES, LLC AND SHOULD NOT BE USED WITHOUT WRITTEN PERMISSION														
QUALITY SYMBOLS A = 0 E = 0 EB = 0 ▼ = 0 C = 0 ⊗ = 0 ■ = 0 ▽ = 0	SEE LONG TEXT EC NO: 122579 DRWN: JFLETCHER CHK'D: FDUGGAN APPR: JDWALLACE	GENERAL TOLERANCES (UNLESS SPECIFIED)		DIMENSION UNITS	SCALE									
		ANGULAR TOL ± 2.0 °		mm	1.5:1									
		4 PLACES ±	3 PLACES ±	2 PLACES ± 0.1	1 PLACE ± 0.2	0 PLACES ±	DRWN BY	DATE	6CCT ML-XT CV CONNECTOR					
		DRAFT WHERE APPLICABLE MUST REMAIN WITHIN DIMENSIONS					JFLETCHER	2015/11/04						
							CHK'D BY	DATE	PRODUCT CUSTOMER DRAWING					
					FDUGGAN	2015/12/07								
					APPR BY	DATE	SERIES: 93443 MATERIAL NUMBER: SEE CHART CUSTOMER: GENERAL MARKET							
					JALEXANDER	2015/12/08								
					DRAWING SIZE	THIRD ANGLE PROJECTION	DOCUMENT NUMBER: 934430040 DOC TYPE: PSD DOC PART: 000 SHEET NUMBER: 2 OF 7							
					A3									



**6CCT RECEPTACLE CONNECTOR**

**SERIES No.** 93444

**CIRCUIT SIZE**  
4 = 6CCT

**ASSEMBLY OPTIONS:**  
 1 = RECEP ASSEMBLY FOR WIRE JACKET RANGE: Ø1.35mm-3.05mm (NOTE 2)  
 2 = RECEP ASSEMBLY FOR WIRE JACKET RANGE: Ø2.23mm-3.68mm (NOTE 2)  
 5 = RECEP ASSEMBLY & HEATSHRINK FOR WIRE JACKET RANGE: Ø1.35mm-3.05mm  
 6 = RECEP ASSEMBLY & HEATSHRINK FOR WIRE JACKET RANGE: Ø2.23mm-3.68mm

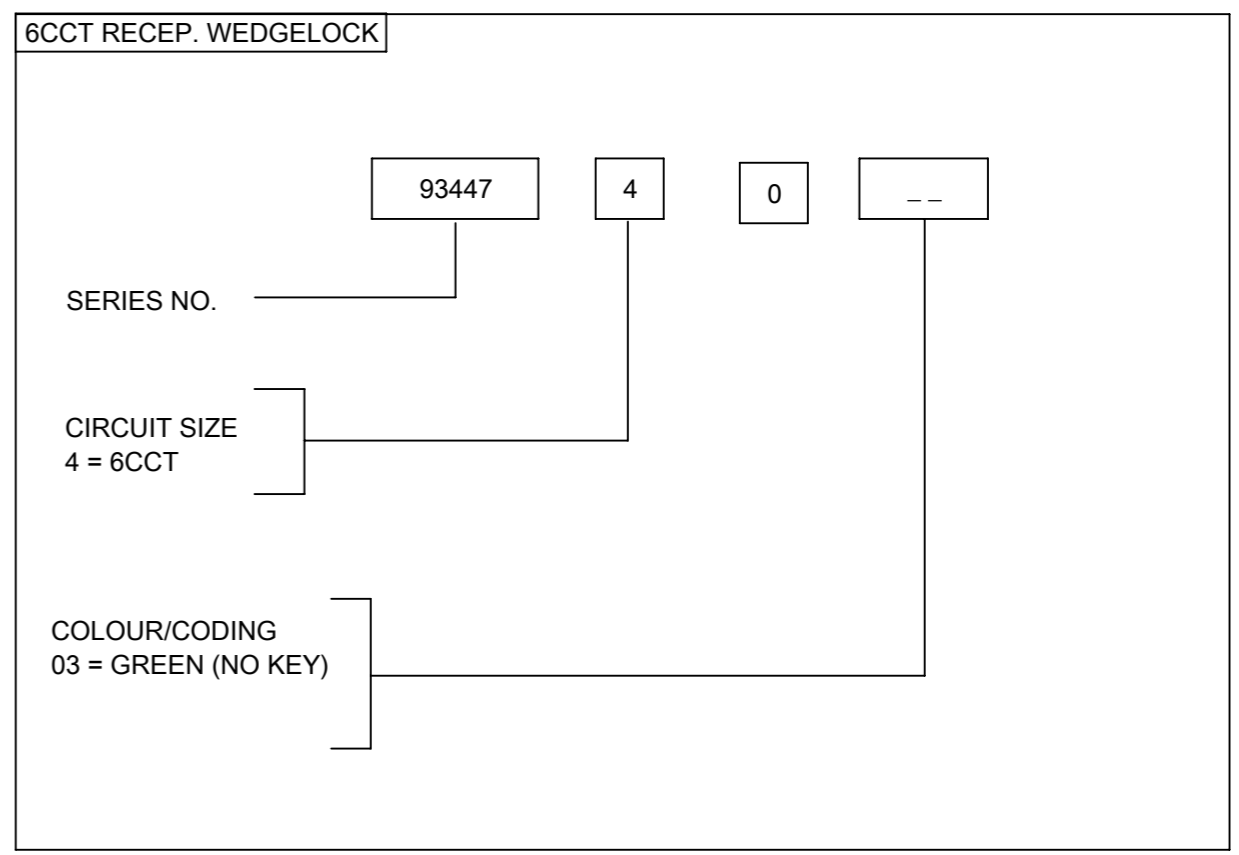
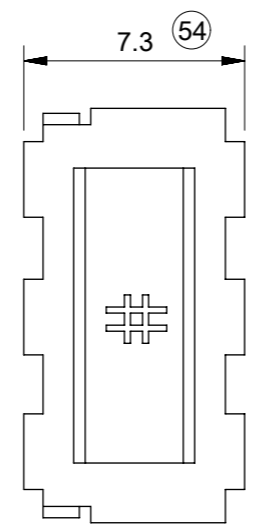
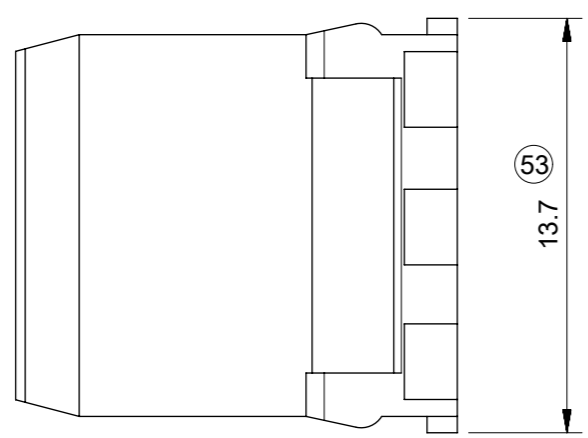
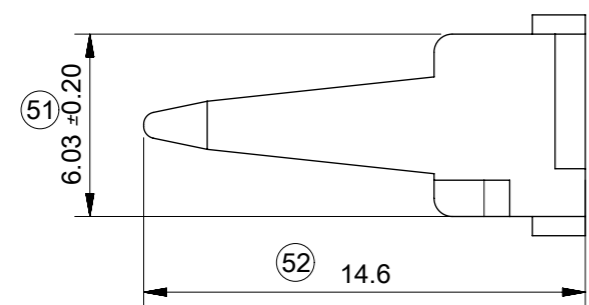
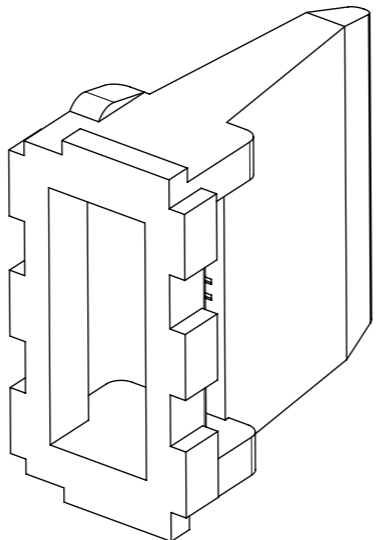
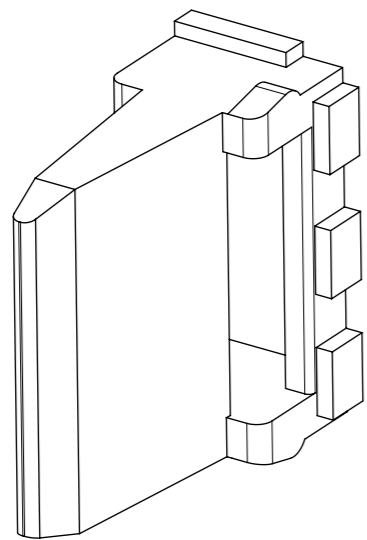
**COLOUR**  
 01=BLACK 06=WHITE  
 02=GREY 07=BROWN  
 03=GREEN 08=ORANGE  
 04=BLUE 09=RED

**EXAMPLE:**  
 6cct RECEP BLACK WITH LARGE SEAL AND HEATSHRINK = 93444-4601

**NOTES**

1. SEE SHEET 2 FOR UNSPECIFIED NOTES AND DIMENSIONS
2. BACK COVER HOUSING COLOUR BLACK
3. HEATSHRINK HOUSING COLOUR BLACK

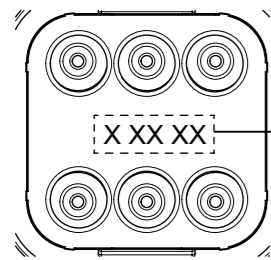
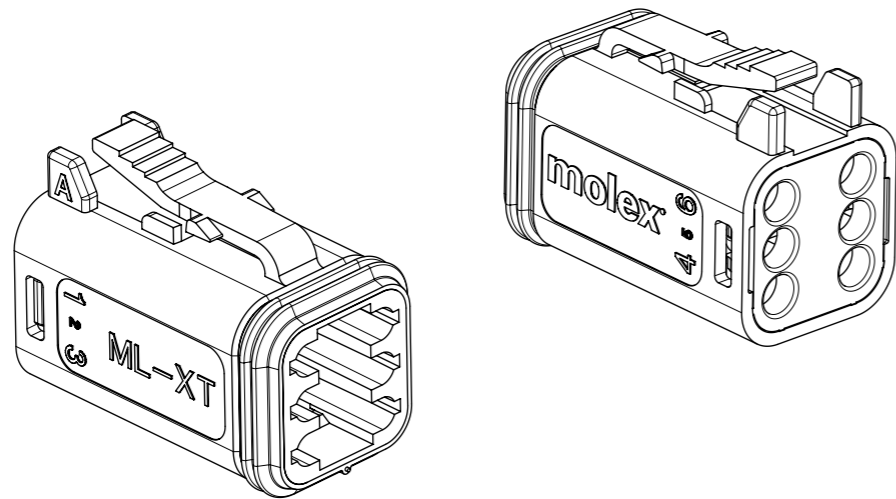
THIS DRAWING CONTAINS INFORMATION THAT IS PROPRIETARY TO MOLEX ELECTRONIC TECHNOLOGIES, LLC AND SHOULD NOT BE USED WITHOUT WRITTEN PERMISSION													
<b>QUALITY SYMBOLS</b> ▽A = 0 ▽E = 0 ▽F = 0 ▼ = 0 ▽C = 0 ⊠ = 0 ■ = 0 ▽ = 0	SEE LONG TEXT EC NO: 122579 DRWN: JFLETCHER CHK'D: FDUGGAN APPR: JDWALLACE	<b>GENERAL TOLERANCES (UNLESS SPECIFIED)</b> ANGULAR TOL ± 2.0 °		DIMENSION UNITS <b>mm</b>	SCALE <b>1:1</b>								
		4 PLACES ±	3 PLACES ±	2 PLACES ± 0.1	1 PLACE ± 0.2							0 PLACES ±	DRWN BY <b>JFLETCHER</b>
		DRAFT WHERE APPLICABLE MUST REMAIN WITHIN DIMENSIONS		DRAWING SIZE <b>A3</b>	THIRD ANGLE PROJECTION 	CHK'D BY <b>FDUGGAN</b>	DATE <b>2015/12/07</b>	<b>PRODUCT CUSTOMER DRAWING</b>					
				APPR BY <b>JALEXANDER</b>	DATE <b>2015/12/08</b>	SERIES <b>93443</b>	MATERIAL NUMBER <b>SEE CHART</b>	CUSTOMER <b>GENERAL MARKET</b>					
				REV <b>B</b>				DOCUMENT NUMBER <b>934430040</b>	DOC TYPE <b>PSD</b>	DOC PART <b>000</b>	SHEET NUMBER <b>3 OF 7</b>		



NOTES  
 1. MATERIAL  
 HOUSING: NYLON 30%GF  
 INSPECTION No's 51-100 RESERVED FOR SHEET 4  
 LAST INSPECTION No. 54

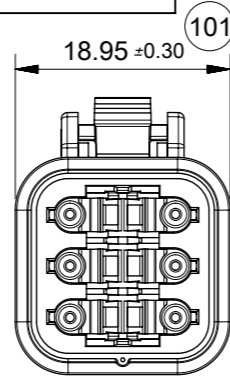
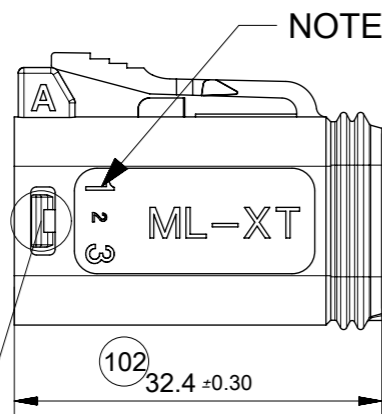
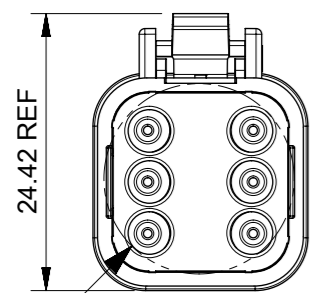
THIS DRAWING CONTAINS INFORMATION THAT IS PROPRIETARY TO MOLEX ELECTRONIC TECHNOLOGIES, LLC AND SHOULD NOT BE USED WITHOUT WRITTEN PERMISSION											
QUALITY SYMBOLS		EC NO: 122579 DRWN: JFLETCHER CHK'D: FDUGGAN REV APPR: JDWALLACE		GENERAL TOLERANCES (UNLESS SPECIFIED)		DIMENSION UNITS		SCALE			
▽A	= 0			ANGULAR TOL ± 2.0 °		mm		4:1			
▽E	= 0			4 PLACES ±		DRWN BY		DATE			
▽F	= 0			3 PLACES ±		JFLETCHER		2015/11/04		6CCT ML-XT CV CONNECTOR	
▽B	= 0			2 PLACES ± 0.1		CHK'D BY		DATE			
▽C	= 0			1 PLACE ± 0.2		FDUGGAN		2015/12/07		PRODUCT CUSTOMER DRAWING	
▽D	= 0	0 PLACES ±		APPR BY		DATE		SERIES		MATERIAL NUMBER	
▽	= 0	DRAFT WHERE APPLICABLE MUST REMAIN WITHIN DIMENSIONS		JALEXANDER		2015/12/08		93443		SEE CHART	
▽	= 0	B		REV		DRAWING SIZE		THIRD ANGLE PROJECTION		CUSTOMER	
						A3				GENERAL MARKET	
										DOCUMENT NUMBER	
										934430040	
										DOC TYPE	
										PSD	
										DOC PART	
										000	
										SHEET NUMBER	
										4 OF 7	

6CCT PLUG CONNECTOR

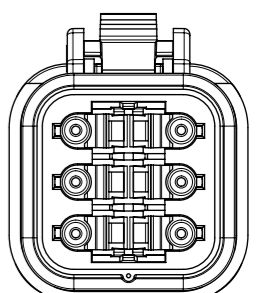
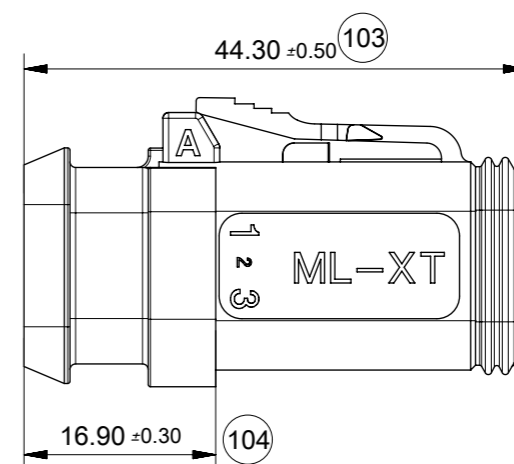
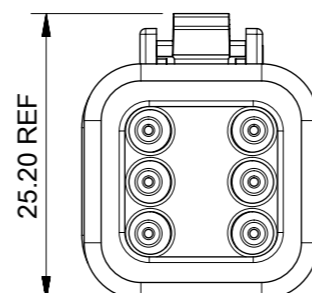
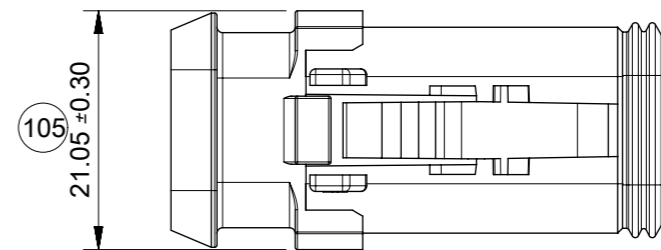
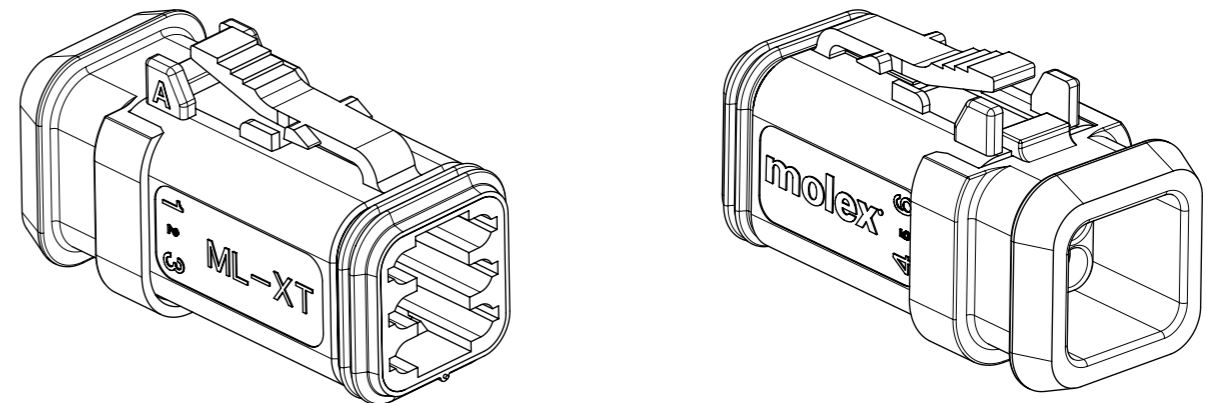


DETAIL C  
SCALE 2:1

DATE CODE: X XX XX  
X — DAY: 1- 7  
X — WEEK: 01 - 52  
X — YEAR: 00 - 99  
# — MACHINE NO. 1  
EXAMPLE: 11315 = DAY 1, WEEK 13, YEAR 15  
i.e. 23rd OF MARCH 2015



6CCT PLUG CONNECTOR WITH HEATSHRINK HOUSING ULTRASONICALLY WELDED IN PLACE



NOTES

- MATERIAL:  
HOUSING: NYLON 30% GF  
PLUG SEAL: SILICONE RUBBER  
BACK SEAL: HIGH CONSISTENCY RUBBER
- CIRCUIT IDENTIFICATION
- JACKET RANGE LARGE =  $\varnothing 2.23\text{MM}$  TO  $3.68\text{MM}$  (SEAL COLOUR: LIGHT BLUE)  
JACKET RANGE SMALL =  $\varnothing 1.35\text{MM}$  TO  $3.05\text{MM}$  (SEAL COLOUR: BURNT ORANGE)
- SEE SHEET 6 FOR FINAL PART NUMBER DESIGNATION
- LATCH TO BE FULLY ENGAGED IN WINDOW  
INSPECTION NUMBERS 101-150 RESERVED FOR SHEET 5  
LAST INSPECTION NUMBER 105

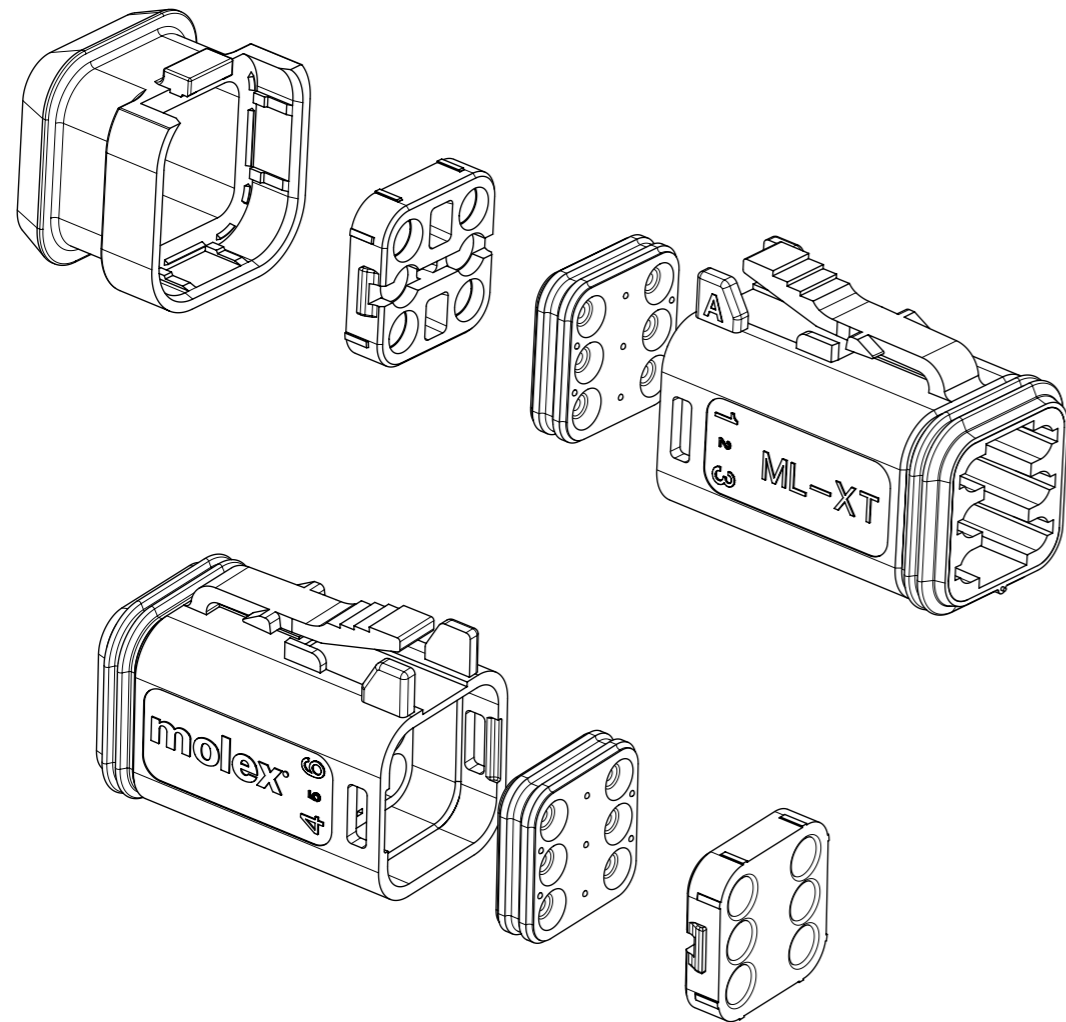
QUALITY SYMBOLS		THIS DRAWING CONTAINS INFORMATION THAT IS PROPRIETARY TO MOLEX ELECTRONIC TECHNOLOGIES, LLC AND SHOULD NOT BE USED WITHOUT WRITTEN PERMISSION			
▽A = 0	SEE LONG TEXT	GENERAL TOLERANCES (UNLESS SPECIFIED)		DIMENSION UNITS	SCALE
▽E = 0		ANGULAR TOL ± 2.0 °		mm	1.5:1
▽F = 0		4 PLACES ±	DRWN BY	DATE	
▽ = 0		3 PLACES ±	JFLETCHER	2015/11/04	
▽C = 0		2 PLACES ± 0.1	CHK'D BY	DATE	
▽ = 0		1 PLACE ± 0.2	FDUGGAN	2015/12/07	
▽ = 0		0 PLACES ±	APPR BY	DATE	
▽ = 0		DRAFT WHERE APPLICABLE MUST REMAIN WITHIN DIMENSIONS	JALEXANDER	2015/12/08	
▽ = 0			DRAWING SIZE	THIRD ANGLE PROJECTION	
			A3		
RELEASE STATUS		P1		RELEASE DATE	20.10.2017 10:37:55

**molex**

6CCT ML-XT CV CONNECTOR

PRODUCT CUSTOMER DRAWING

SERIES	MATERIAL NUMBER	CUSTOMER	
93443	SEE CHART	GENERAL MARKET	
DOCUMENT NUMBER		DOC TYPE	DOC PART SHEET NUMBER
934430040		PSD	000 5 OF 7



### 6CCT PLUG CONNECTOR

93445

4

SERIES No. \_\_\_\_\_

CIRCUIT SIZE  
4 = 6CCT

**ASSEMBLY OPTIONS:**

- 1 = PLUG ASSEMBLY FOR WIRE JACKET RANGE: Ø1.35mm-3.05mm (NOTE 2)
- 2 = PLUG ASSEMBLY FOR WIRE JACKET RANGE: Ø2.23mm-3.68mm (NOTE 2)
- 5 = PLUG ASSEMBLY & HEATSHRINK FOR WIRE JACKET RANGE: Ø1.35mm-3.05mm
- 6 = PLUG ASSEMBLY & HEATSHRINK FOR WIRE JACKET RANGE: Ø2.23mm-3.68mm

**COLOUR**

- 01=BLACK
- 02=GREY 06=WHITE
- 03=GREEN 07=BROWN
- 04=BLUE 08=ORANGE
- 05=YELLOW 09=RED

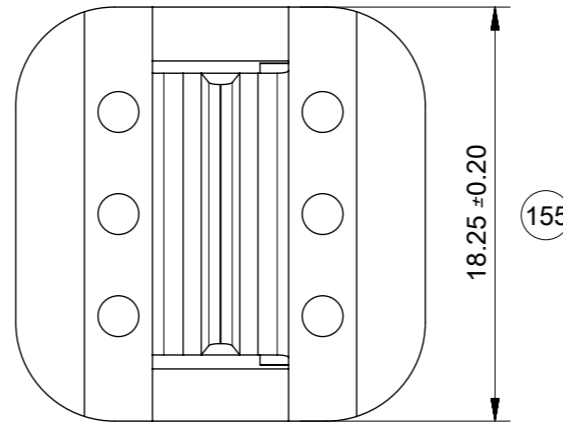
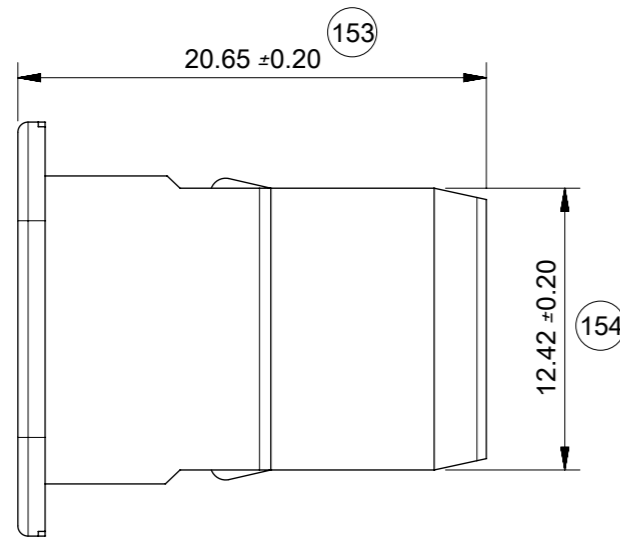
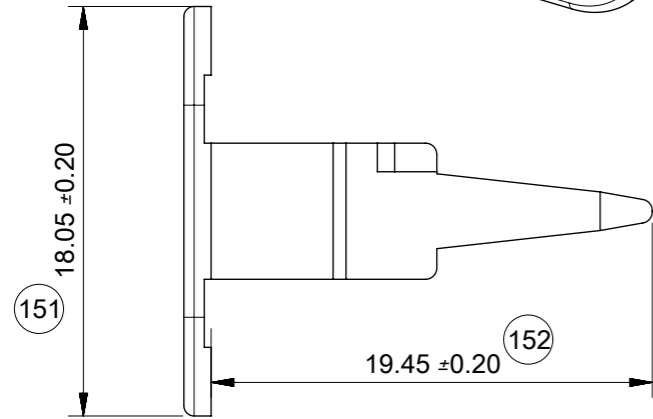
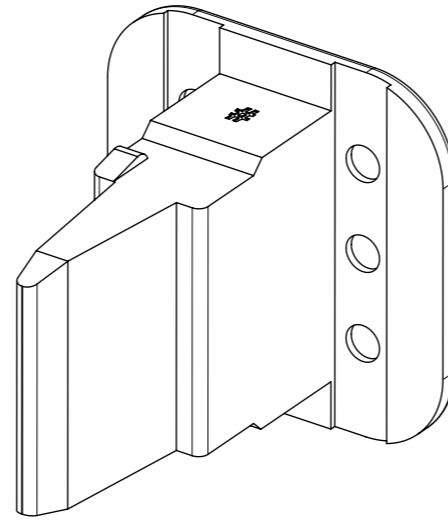
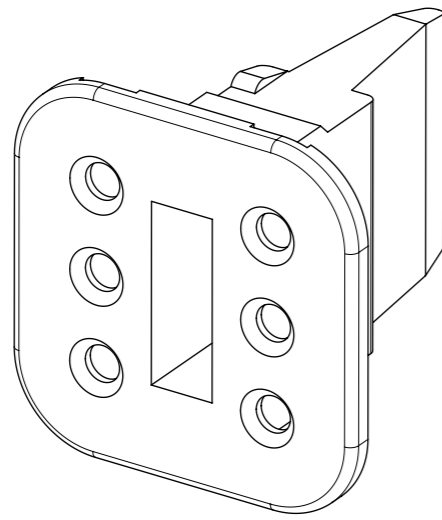
**EXAMPLE:**

6cct PLUG BLACK WITH LARGE SEAL AND HEATSHRINK = 93444-4601

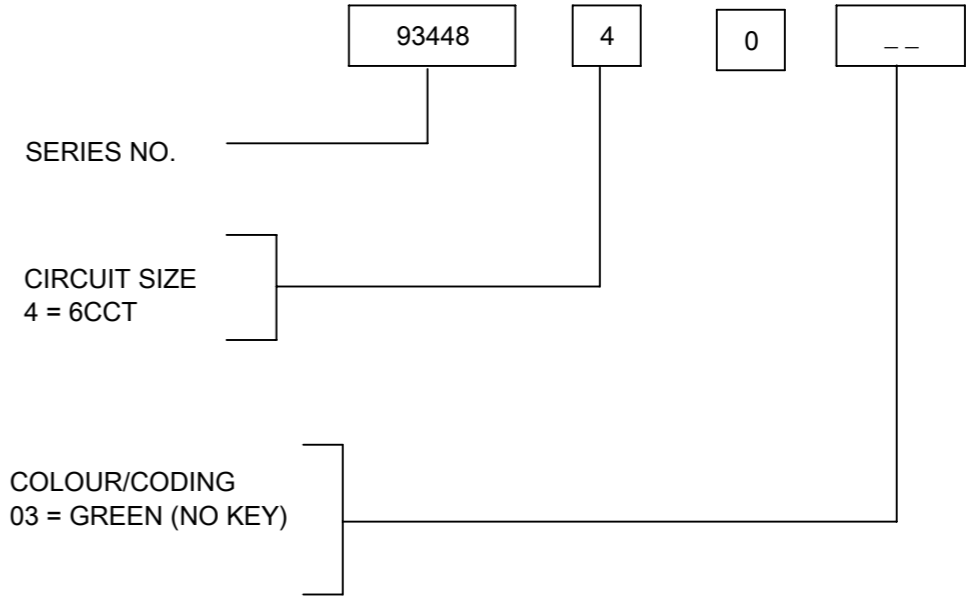
**NOTES**

1. SEE SHEET 5 FOR UNSPECIFIED NOTES AND DIMENSIONS
2. BACK COVER HOUSING COLOUR BLACK
3. HEATSHRINK HOUSING COLOUR BLACK

THIS DRAWING CONTAINS INFORMATION THAT IS PROPRIETARY TO MOLEX ELECTRONIC TECHNOLOGIES, LLC AND SHOULD NOT BE USED WITHOUT WRITTEN PERMISSION											
QUALITY SYMBOLS	A = 0 E = 0 F = 0 G = 0 H = 0 I = 0 J = 0 K = 0 L = 0 M = 0 N = 0 O = 0 P = 0 Q = 0 R = 0 S = 0 T = 0 U = 0 V = 0 W = 0 X = 0 Y = 0 Z = 0	SEE LONG TEXT EC NO: 122579 DRWN: JFLETCHER CHK'D: FDUGGAN APPR: JDWALLACE	GENERAL TOLERANCES (UNLESS SPECIFIED)		DIMENSION UNITS	SCALE					
			ANGULAR TOL ± 2.0 °		mm	1:1					
			4 PLACES ±	JFLETCHER	DATE	<b>6CCT ML-XT CV CONNECTOR</b>					
			3 PLACES ±	2015/11/04							
			2 PLACES ± 0.1	CHK'D BY	DATE	<b>PRODUCT CUSTOMER DRAWING</b>					
			1 PLACE ± 0.2	FDUGGAN	2015/12/07						
			0 PLACES ±	APPR BY	DATE	SERIES: 93443 MATERIAL NUMBER: SEE CHART CUSTOMER: GENERAL MARKET					
			DRAFT WHERE APPLICABLE MUST REMAIN WITHIN DIMENSIONS	JALEXANDER	2015/12/08						
				DRAWING SIZE	THIRD ANGLE PROJECTION	DOCUMENT NUMBER: 934430040 DOC TYPE: PSD DOC PART: 000 SHEET NUMBER: 6 OF 7					
				A3							



6CCT PLUG WEDGELOCK



NOTES

1. MATERIAL  
 HOUSING: NYLON 30%GF  
 INSPECTION No's 151-200 RESERVED FOR SHEET 7  
 LAST INSPECTION No. 155

THIS DRAWING CONTAINS INFORMATION THAT IS PROPRIETARY TO MOLEX ELECTRONIC TECHNOLOGIES, LLC AND SHOULD NOT BE USED WITHOUT WRITTEN PERMISSION											
<b>QUALITY SYMBOLS</b> ▽A = 0 ▽E = 0 ▽F = 0 ▽ = 0 ▽C = 0 ⊠ = 0 ■ = 0 ▽ = 0		<b>GENERAL TOLERANCES (UNLESS SPECIFIED)</b> ANGULAR TOL ± 2.0 ° 4 PLACES ± 3 PLACES ± 2 PLACES ± 0.1 1 PLACE ± 0.2 0 PLACES ±		DIMENSION UNITS: mm SCALE: 3:1		<p>6CCT ML-XT CV CONNECTOR</p>					
EC NO: 122579 DRWN: JFLETCHER CHK'D: FDUGGAN APPR: JDWALLACE		DATE: 2017/07/27 DATE: 2017/10/05 DATE: 2017/10/20		DRWN BY: JFLETCHER DATE: 2015/11/04 CHK'D BY: FDUGGAN DATE: 2015/12/07 APPR BY: JALEXANDER DATE: 2015/12/08							
SEE LONG TEXT		DRAFT WHERE APPLICABLE MUST REMAIN WITHIN DIMENSIONS		DRAWING SIZE: A3 THIRD ANGLE PROJECTION		SERIES: 93443 MATERIAL NUMBER: SEE CHART CUSTOMER: GENERAL MARKET		DOCUMENT NUMBER: 934430040 DOC TYPE: PSD DOC PART: 000 SHEET NUMBER: 7 OF 7			