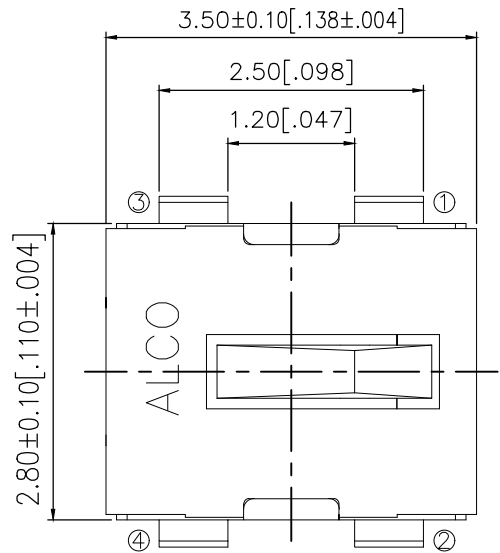
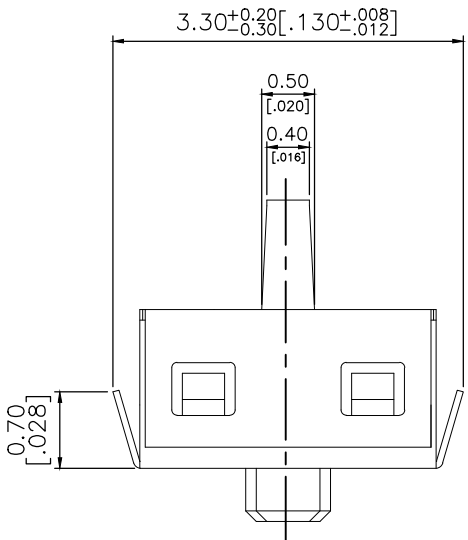
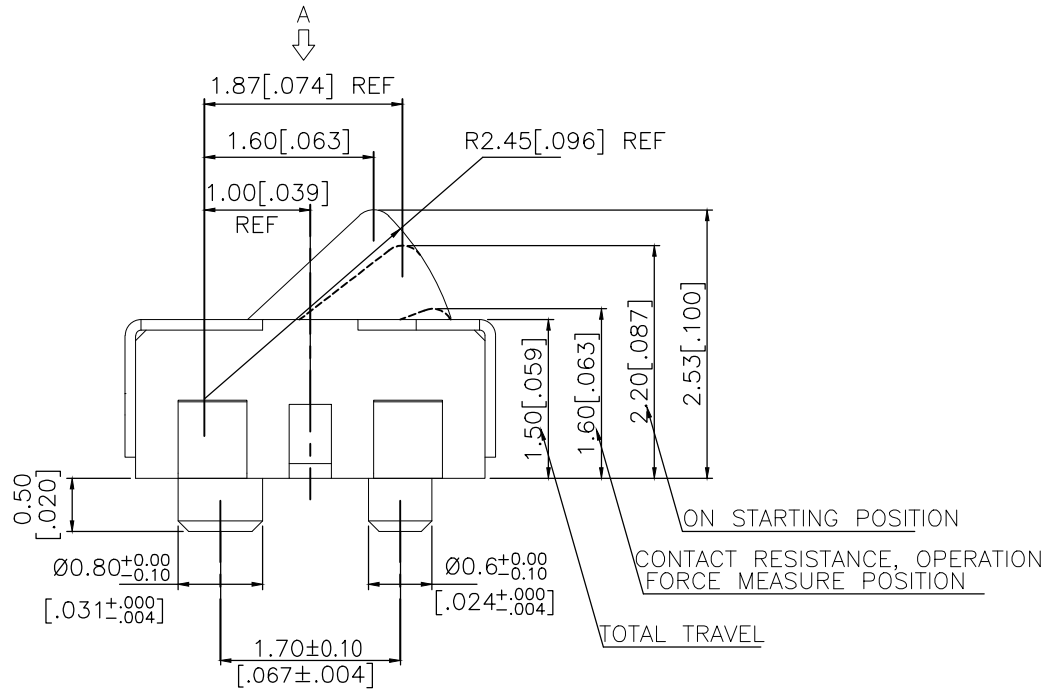
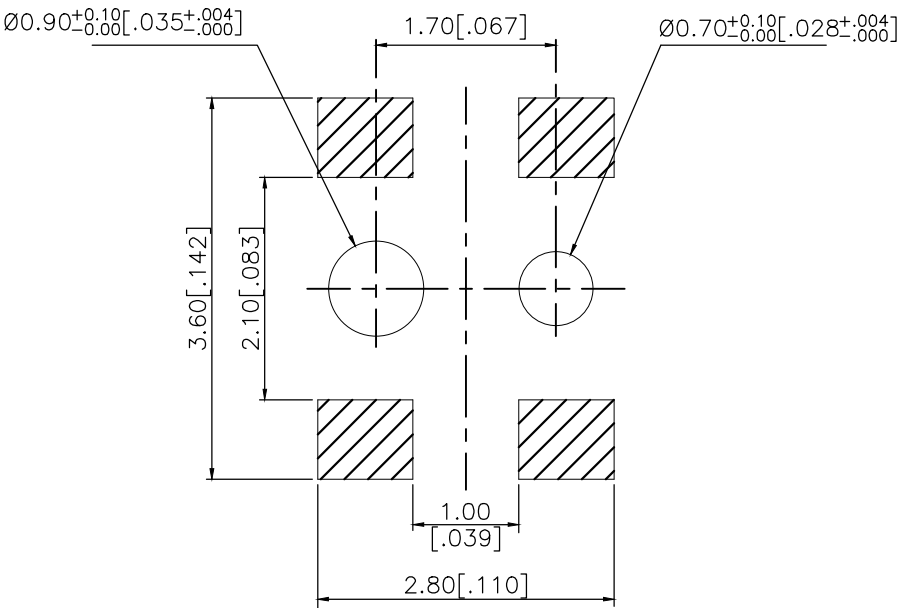
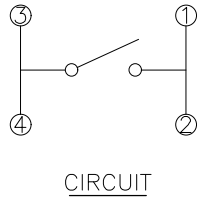



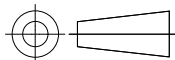
REVISIONS					
P	LTR	DESCRIPTION	DATE	DWN	APVD
	1	NEW DRAWING	07MAR2018	GCM	AS



2331373-1
AS SHOWN



PRELIMINARY

THIS DRAWING IS A CONTROLLED DOCUMENT.		DWN GANESH C M 07MAR2018		<div>PRELIMINARY</div> <div>TE Connectivity Ltd.</div>							
		CHK ALEXANDER SHARPE 07MAR2018									
		APVD ALEXANDER SHARPE 07MAR2018									
		NAME									
DIMENSIONS: mm [INCHES]		TOLERANCES UNLESS OTHERWISE SPECIFIED:		SWITCH, DETECTOR, JJA SERIES, 3.5X2.8mm, VERTICAL, SMT, POSTS							
		0 PLC ± -		—							
		1 PLC ± -									
		2 PLC ± 0.20 [.008]									
		3 PLC ± -									
		4 PLC ± -									
		ANGLES ± -									
MATERIAL		FINISH		SIZE		CAGE CODE		DRAWING NO		RESTRICTED TO	
—		—		A3		00779		C-2331373		—	
				PRODUCT SPEC							
				APPLICATION SPEC							
				WEIGHT							
				CUSTOMER DRAWING							
				SCALE		NTS		SHEET		1 OF 3	
										REV 1	

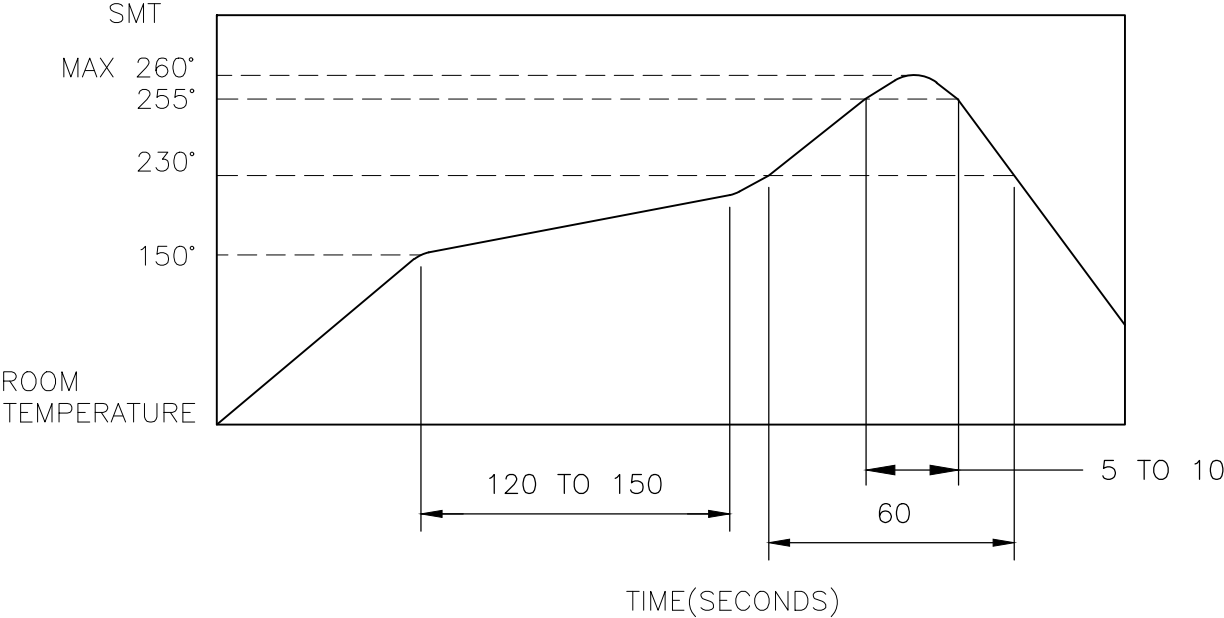
THIS DRAWING IS UNPUBLISHED.	RELEASED FOR PUBLICATION
© COPYRIGHT — TE Connectivity Ltd.	ALL RIGHTS RESERVED.

REVISIONS					
P	LTR	DESCRIPTION	DATE	DWN	APVD
	—	SEE SHEET 1	—	—	—

NOTES:

1. MATERIALS
ACTUATOR: THERMOPLASTIC, BLACK
BODY: THERMOPLASTIC, BLACK
COVER: STAINLESS STEEL
TERMINAL: COPPER ALLOY, SILVER PLATE
SPRING: COPPER ALLOY, SILVER PLATE
2. COMPLIANCE:
ALL MATERIALS AND FINISHES SHALL COMPLY WITH EU
DIRECTIVE 2002/95/EC OF 27JAN2003(RoHS)
3. SPECIFICATIONS:
RATING: 1mA 5V DC
CONTACT RESISTANCE: 2Ω MAXIMUM(INITIAL)
INSULATION RESISTANCE: 100MΩ MINIMUM AT 100 V DC
DIELECTRIC STRENGTH: 100 V AC, 1 MINUTE
OPERATING LIFE: 100,000 CYCLES WITH LOAD
TOTAL TRAVEL: 1.03 [.041]
ACTUATION FORCE: 50gf MAXIMUM
OPERATING TEMPERATURE: −10°C TO 60° C
STORAGE TEMPERATURE: −20°C TO 70° C

4. SOLDER CONDITIONS:



THE CONDITION MENTIONED ABOVE IS THE TEMPERATURE ON THE CU FOIL OF THE PCB SURFACE. THERE ARE CASES WHERE THE BOARD’S TEMPERATURE GREATLY DIFFERS FROM THE SWITCH’S SURFACE. DO NOT ALLOW SWITCH’S SURFACE TEMPERATURE TO EXCEED 260°C

MANUAL SOLDERING


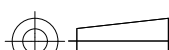
SOLDERING TEMPERATURE	MAX 350°C
CONTINUOUS SOLDERING TIME	5 SECONDS MAX.

PRECAUTIONS IN HANDLING

1. CARE SHOULD BE EXERCISED SO THAT FLUX FROM THE UPPER PART OF THE PRINTED CIRCUIT BOARD DOES NOT ADHERE TO THE SWITCH.

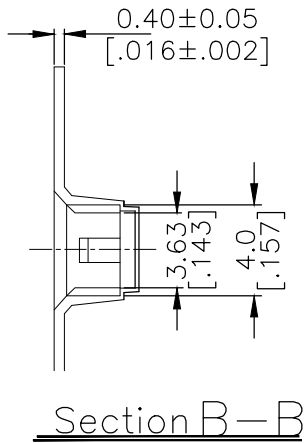
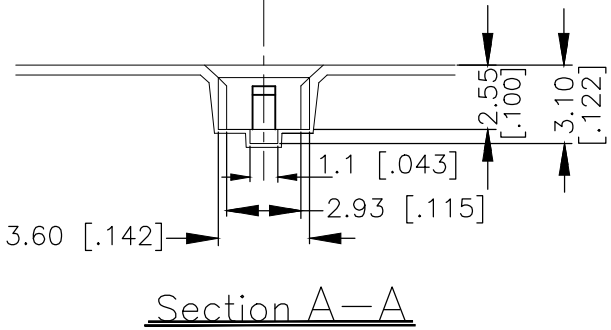
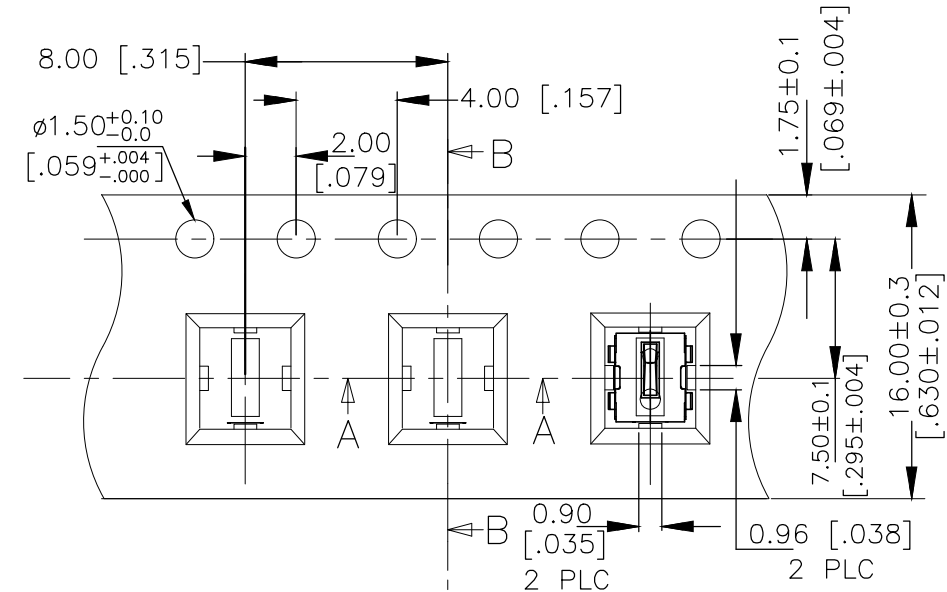
JJAV0UJ253NOPMRTR	2331373–1
SMART PART NUMBER	PART NUMBER

PRELIMINARY

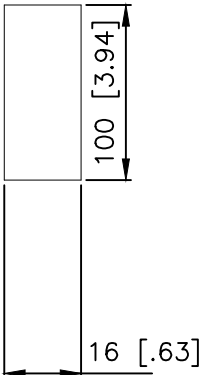
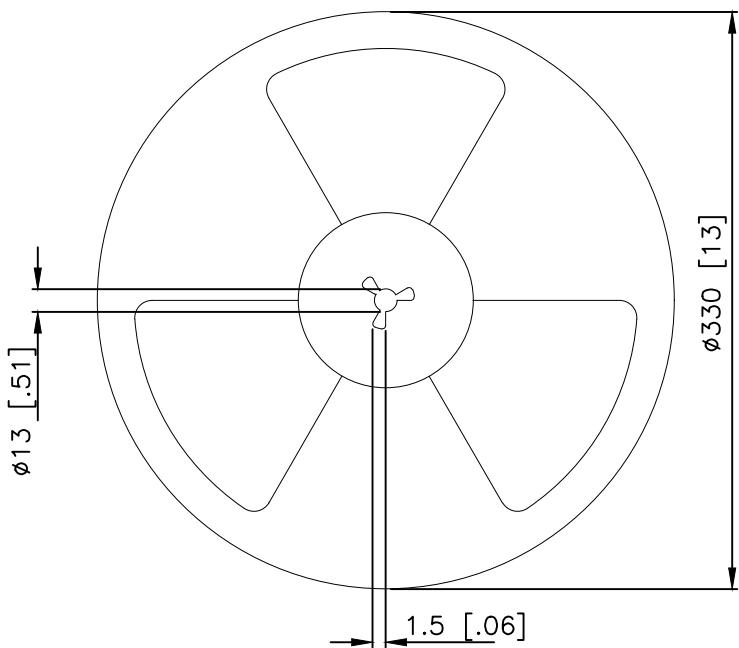
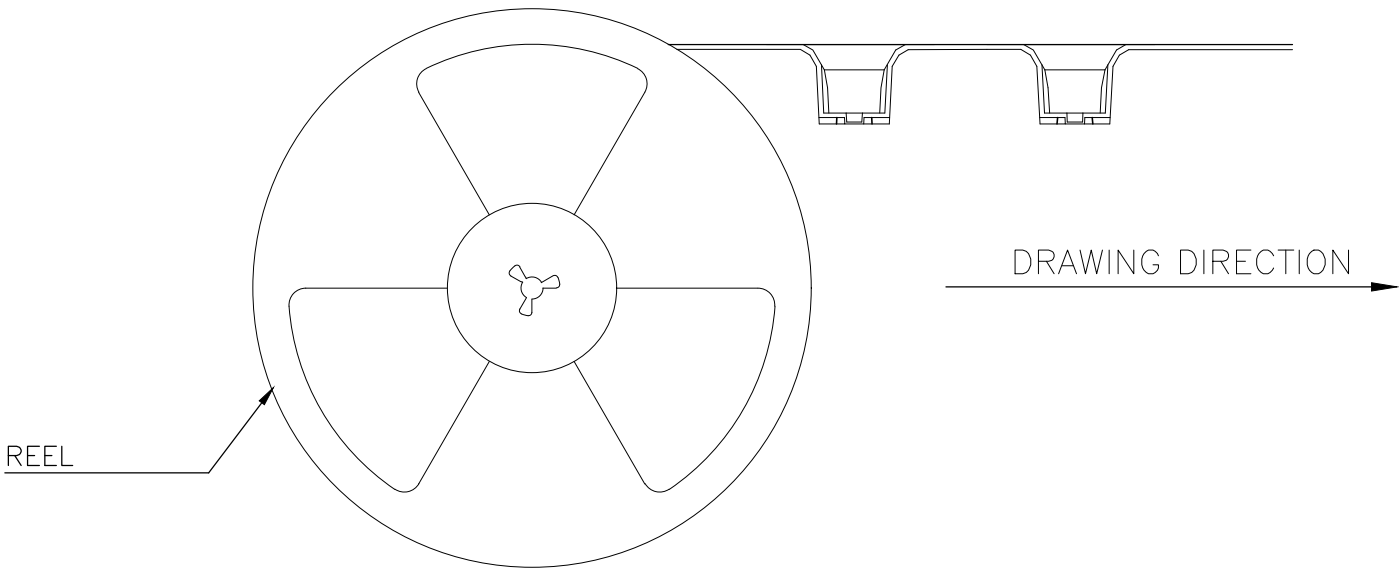
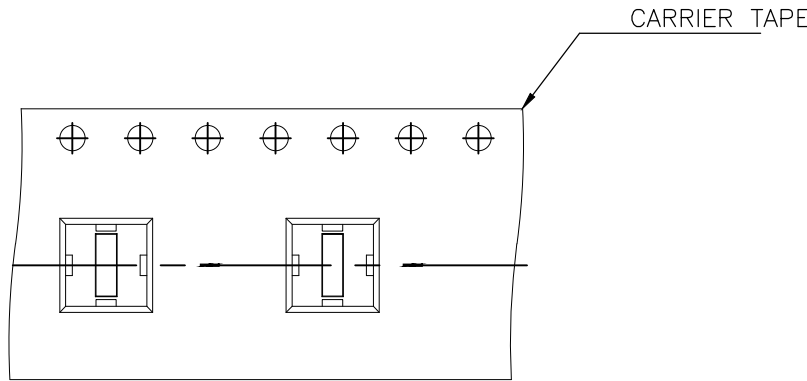
THIS DRAWING IS A CONTROLLED DOCUMENT.		DWN GANESH C M 07MAR2018	<div>TE Connectivity Ltd.</div>						
DIMENSIONS: mm [INCHES]	TOLERANCES UNLESS OTHERWISE SPECIFIED:	CHK ALEXANDER SHARPE 07MAR2018							
		APVD ALEXANDER SHARPE 07MAR2018	NAME SWITCH, DETECTOR, JJA SERIES, 3.5X2.8mm, VERTICAL, SMT, POSTS —						
	0 PLC ± — 1 PLC ± — 2 PLC ± 0.20 [.008] 3 PLC ± — 4 PLC ± — ANGLES ± —	PRODUCT SPEC —	SIZE		CAGE CODE	DRAWING NO	RESTRICTED TO		
		APPLICATION SPEC —	A3		00779	C=2331373	—		
MATERIAL —		FINISH —	WEIGHT	CUSTOMER DRAWING					
			SCALE NTS		SHEET 2 of 3		REV 1		

REVISIONS					
P	LTR	DESCRIPTION	DATE	DWN	APVD
	—	SEE SHEET 1	—	—	—


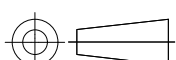
PACKAGING:
2000 SWITCHES PER REEL
THE DIMENSION OF CARRIER TAPE, COVER TAPE AND REEL



THE DIRECTION OF PILOT HOLES



PRELIMINARY

THIS DRAWING IS A CONTROLLED DOCUMENT.		DWN GANESH C M 07MAR2018	<div>TE Connectivity Ltd.</div>									
		CHK ALEXANDER SHARPE 07MAR2018										
DIMENSIONS: mm [INCHES]	TOLERANCES UNLESS OTHERWISE SPECIFIED:	APVD ALEXANDER SHARPE 07MAR2018	NAME SWITCH, DETECTOR, JJA SERIES, 3.5X2.8mm, VERTICAL, SMT, POSTS —									
	0 PLC ± —	PRODUCT SPEC	SIZE A3				CAGE CODE 00779	DRAWING NO C-2331373	RESTRICTED TO —			
	1 PLC ± —	—										
	2 PLC ± 0.20 [.008]	APPLICATION SPEC										
	3 PLC ± —	—										
	4 PLC ± —	WEIGHT										
MATERIAL —	FINISH —	CUSTOMER DRAWING								SCALE NTS	SHEET 3 OF 3	REV 1