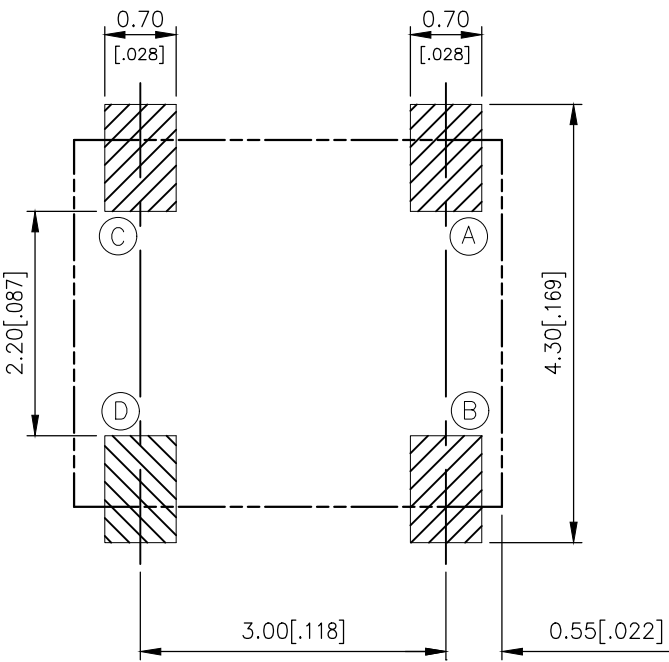
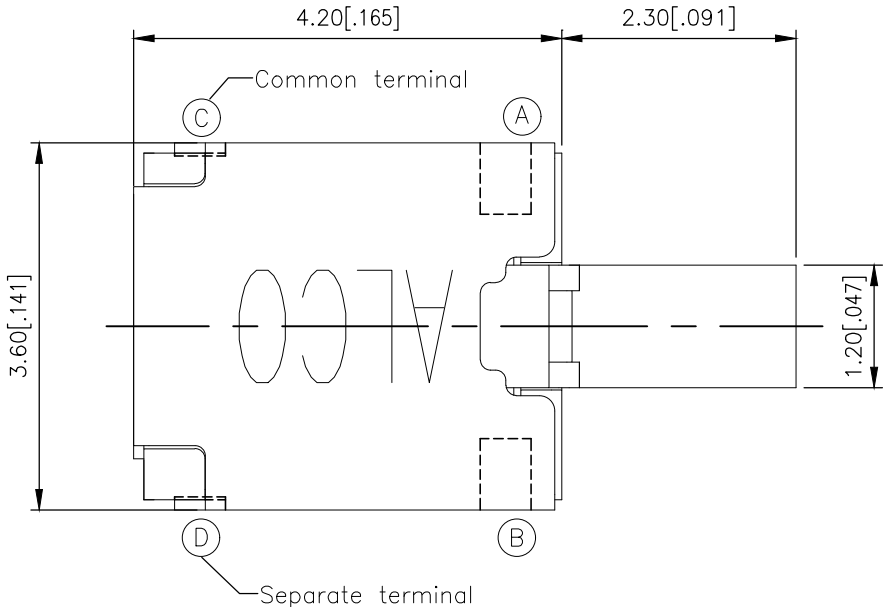
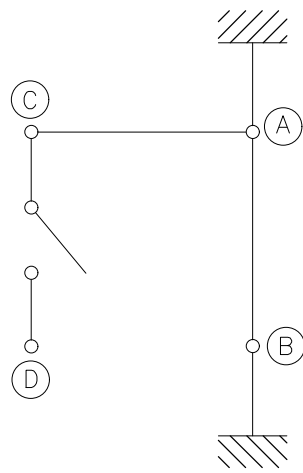
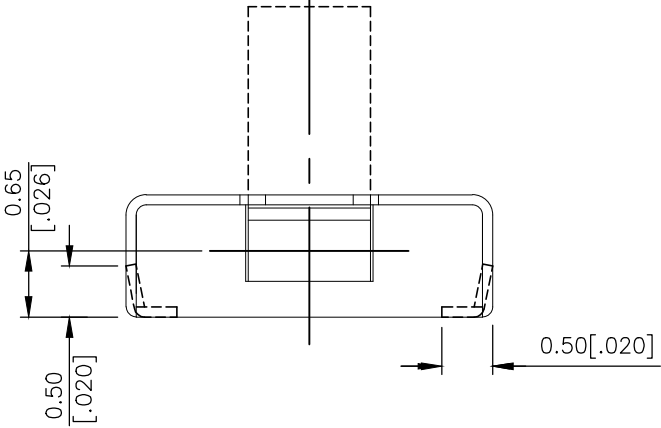
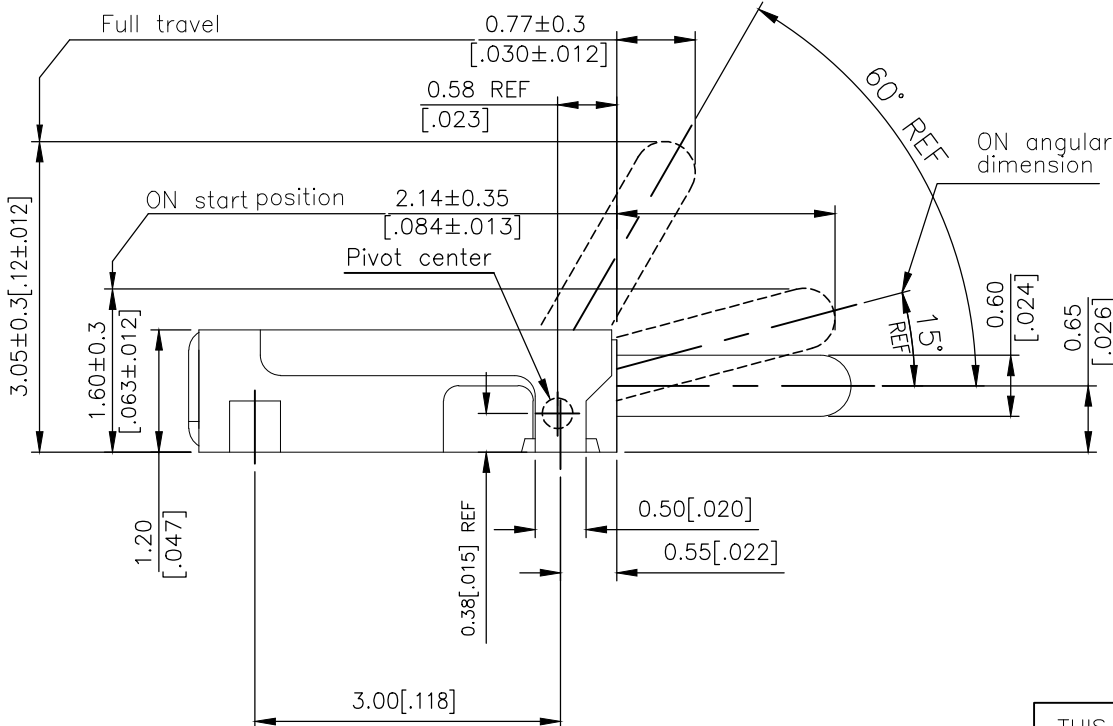


REVISIONS					
P	LTR	DESCRIPTION	DATE	DWN	APVD
	1	NEW DRAWING	07MAR2018	GCM	AS

2331411-1
AS SHOWN

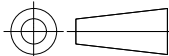


P.C.B. LAYOUT



CIRCUIT DIAGRAM

PRELIMINARY

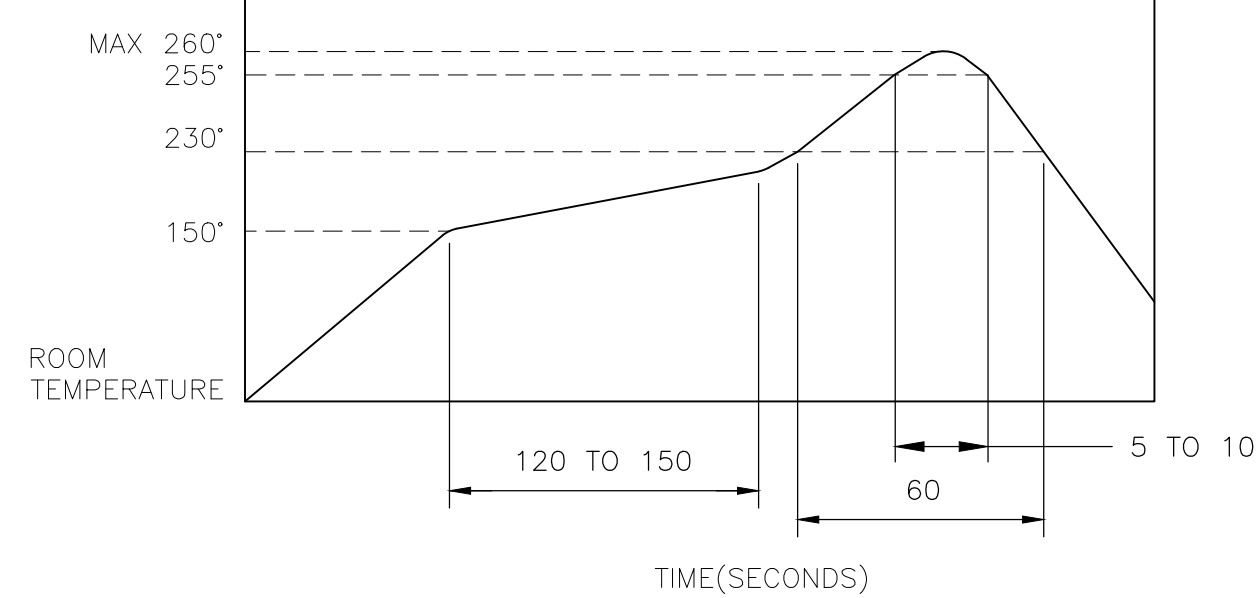
THIS DRAWING IS A CONTROLLED DOCUMENT.		DWN GANESH C M 07MAR2018	<div><div><div></div><div>TE</div><div>TE Connectivity Ltd.</div></div><div>PRELIMINARY</div></div>					
		CHK ALEXANDER SHARPE 07MAR2018						
		APVD ALEXANDER SHARPE 07MAR2018						
		PRODUCT SPEC —						
DIMENSIONS: mm [INCHES]		TOLERANCES UNLESS OTHERWISE SPECIFIED:		NAME SWITCH, DETECTOR, JJD SERIES, 4.2X3.6mm, VERTICAL ACTUATION, UPLIFT, SMT —				
		0 PLC ± — 1 PLC ± — 2 PLC ± 0.20 [.008] 3 PLC ± — 4 PLC ± — ANGLES ± —		APPLICATION SPEC —				
MATERIAL —		FINISH —		SIZE A3		CAGE CODE 00779	DRAWING NO C-2331411	RESTRICTED TO —
CUSTOMER DRAWING						SCALE NTS	SHEET 1 OF 3	REV 1

REVISIONS					
P	LTR	DESCRIPTION	DATE	DWN	APVD
	—	SEE SHEET 1	—	—	—

NOTES:

1. MATERIALS
- ACTUATOR: THERMOPLASTIC, UL 94V–0, BLACK
- BODY: THERMOPLASTIC,UL 94V–0, BLACK
- COVER: NICKEL SILVER
- TERMINAL: COPPER ALLOY, SILVER PLATE
- CONTACT: COPPER ALLOY, SILVER PLATE
- SILICONE: SILICONE, BLACK
- STEM: THERMOPLASTIC, BLACK
2. COMPLIANCE:
- ALL MATERIALS AND FINISHES SHALL COMPLY WITH EU
- DIRECTIVE 2002/95/EC OF 27JAN2003(RoHS)
3. SPECIFICATIONS:
- RATING: DC 3V, 50 mA TO DC 5V, 10mA
- CONTACT RESISTANCE: 500mΩ MAXIMUM (INITIAL)
- INSULATION RESISTANCE: 100MΩ MINIMUM AT 100 V DC
- DIELECTRIC STRENGTH: 100 V AC, 1 MINUTE
- OPERATING LIFE: 50,000 CYCLES WITH LOAD
- TOTAL TRAVEL: 60°
- ACTUATION FORCE: 40gf MAXIMUM
- OPERATING TEMPERATURE: –10°C TO 60° C
- STORAGE TEMPERATURE: –20°C TO 70° C

4. SOLDER CONDITIONS:



THE CONDITION MENTIONED ABOVE IS THE TEMPERATURE ON THE CU FOIL OF THE PCB SURFACE. THERE ARE CASES WHERE THE BOARD’S TEMPERATURE GREATLY DIFFERS FROM THE SWITCH’S SURFACE. DO NOT ALLOW SWITCH’S SURFACE TEMPERATURE TO EXCEED 260°C

MANUAL SOLDERING

SOLDERING TEMPERATURE	MAX.350°C.
CONTINUOUS SOLDERING TIME	MAX. 5 SECONDS.

PRECAUTIONS IN HANDLING

1. CARE SHOULD BE EXERCISED SO THAT FLUX FROM THE UPPER PART OF THE PRINTED CIRCUIT BOARD DOES NOT ADHERE TO THE SWITCH.

JJDVUUJ305NONMRTR	2331411–1
SMART PART NUMBER	PART NUMBER

PRELIMINARY

THIS DRAWING IS A CONTROLLED DOCUMENT.		DWN GANESH C M 07MAR2018	<div><div>TE</div>TE Connectivity Ltd.</div>			
DIMENSIONS: mm [INCHES]	TOLERANCES UNLESS OTHERWISE SPECIFIED:	CHK ALEXANDER SHARPE 07MAR2018				
		APVD ALEXANDER SHARPE 07MAR2018	NAME SWITCH, DETECTOR, JJD SERIES, 4.2X3.6mm, VERTICAL ACTUATION, UPLIFT, SMT			
	0 PLC ± – 1 PLC ± – 2 PLC ± 0.20 [.008] 3 PLC ± – 4 PLC ± – ANGLES ± –	PRODUCT SPEC —	SIZE A3 CAGE CODE 00779 DRAWING NO C=2331411			
		APPLICATION SPEC —				
MATERIAL —	FINISH —	WEIGHT	RESTRICTED TO —			
CUSTOMER DRAWING			SCALE NTS	SHEET 2 of 3	REV 1	

