

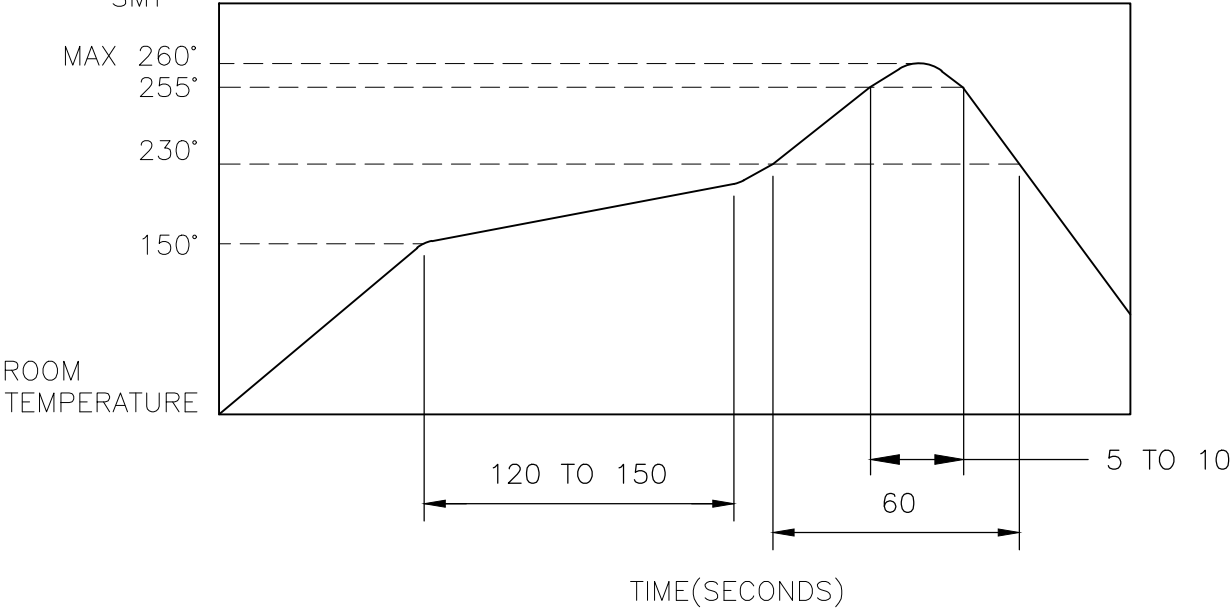


REVISIONS					
P	LTR	DESCRIPTION	DATE	DWN	APVD
	—	SEE SHEET 1	—	—	—

NOTES:

1. MATERIALS  
ACTUATOR: THERMOPLASTIC, UL 94V-0, COLOR BROWN  
BODY: THERMOPLASTIC, UL 94V-0, COLOR BLACK  
TERMINAL: BRASS, SILVER PLATE  
CONTACT: STAINLESS STEEL, SILVER CLAD
2. COMPLIANCE:  
ALL MATERIALS AND FINISHES SHALL COMPLY WITH EU  
DIRECTIVE 2002/95/EC OF 27JAN2003(RoHS)
3. SPECIFICATIONS:  
RATING: DC 20V, 50mA  
CONTACT RESISTANCE: 1Ω MAXIMUM(INITIAL)  
INSULATION RESISTANCE: 100MΩ MINIMUM AT 100 V DC  
DIELECTRIC STRENGTH: 100 V AC, 1 MINUTE  
OPERATING LIFE: 100,000 CYCLES WITH LOAD  
TOTAL TRAVEL: 2.15 [.085]  
ACTUATION FORCE: 50gf MAXIMUM  
OPERATING TEMPERATURE: -10 TO 60° C  
STORAGE TEMPERATURE: -20 TO 70° C

4. SOLDER CONDITIONS:  
SMT



THE CONDITION MENTIONED ABOVE IS THE TEMPERATURE ON THE CU FOIL OF THE PCB SURFACE. THERE ARE CASES WHERE BOARD'S TEMPERATURE GREATLY DIFFERS FROM SWITCH'S SURFACE. DO NOT ALLOW SWITCH'S SURFACE TEMPERATURE TO EXCEED 260°C

MANUAL SOLDERING


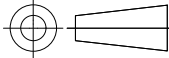
SOLDERING TEMPERATURE	MAX.350°C.
CONTINUOUS SOLDERING TIME	MAX. 5 SECONDS.

PRECAUTIONS IN HANDLING

1. CARE SHOULD BE EXERCISED SO THAT FLUX FROM THE UPPER PART OF THE PRINTED CIRCUIT BOARD DOES NOT ADHERE TO THE SWITCH.

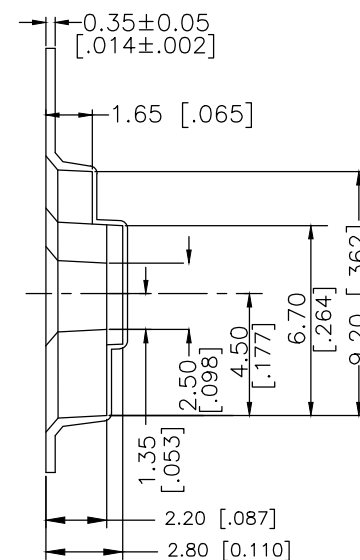
JJHRUG200NOPMRTR	2331407-1
SMART PART NUMBER	PART NUMBER

PRELIMINARY

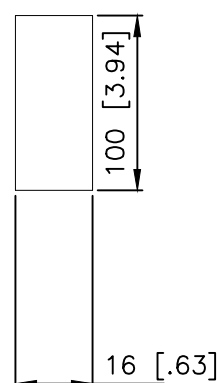
THIS DRAWING IS A CONTROLLED DOCUMENT.		DWN GANESH C M 07MAR2018		<div>TE Connectivity Ltd.</div>			
DIMENSIONS: mm [INCHES]		TOLERANCES UNLESS OTHERWISE SPECIFIED:		NAME			
		CHK ALEXANDER SHARPE 07MAR2018		SWITCH, DETECTOR, JJJ SERIES, 5.5X4.7mm, HORIZONTAL, SMT, RIGHT, POSTS —			
		APVD ALEXANDER SHARPE 07MAR2018					
		PRODUCT SPEC —					
		APPLICATION SPEC —					
MATERIAL —		FINISH —		SIZE A3	CAGE CODE 00779	DRAWING NO C-2331407	RESTRICTED TO —
CUSTOMER DRAWING				SCALE NTS	SHEET 2 OF 3	REV 1	

3000 SWITCHES PER REEL

## THE DIMENSION OF CARRIER TAPE, COVER TAPE AND REEL



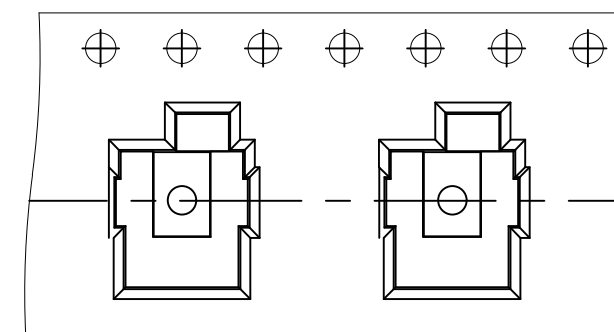
SECTION A-A



# PRELIMINARY

## THE DIRECTION OF PILOT HOLES

CARRIER TAPE



DRAWING DIRECTION

REEL

1470-19 (1/15)