

THIS DRAWING IS UNPUBLISHED.

RELEASED FOR PUBLICATION

- , - .

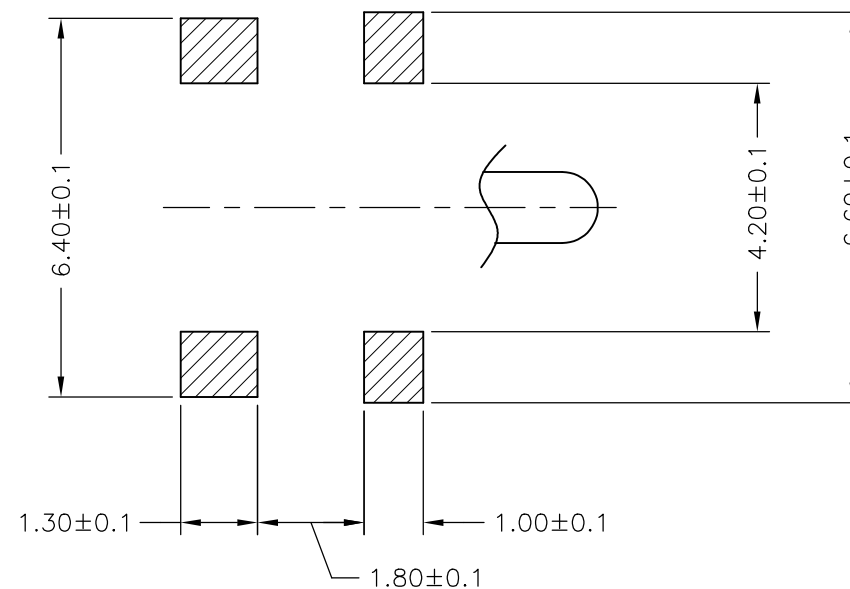
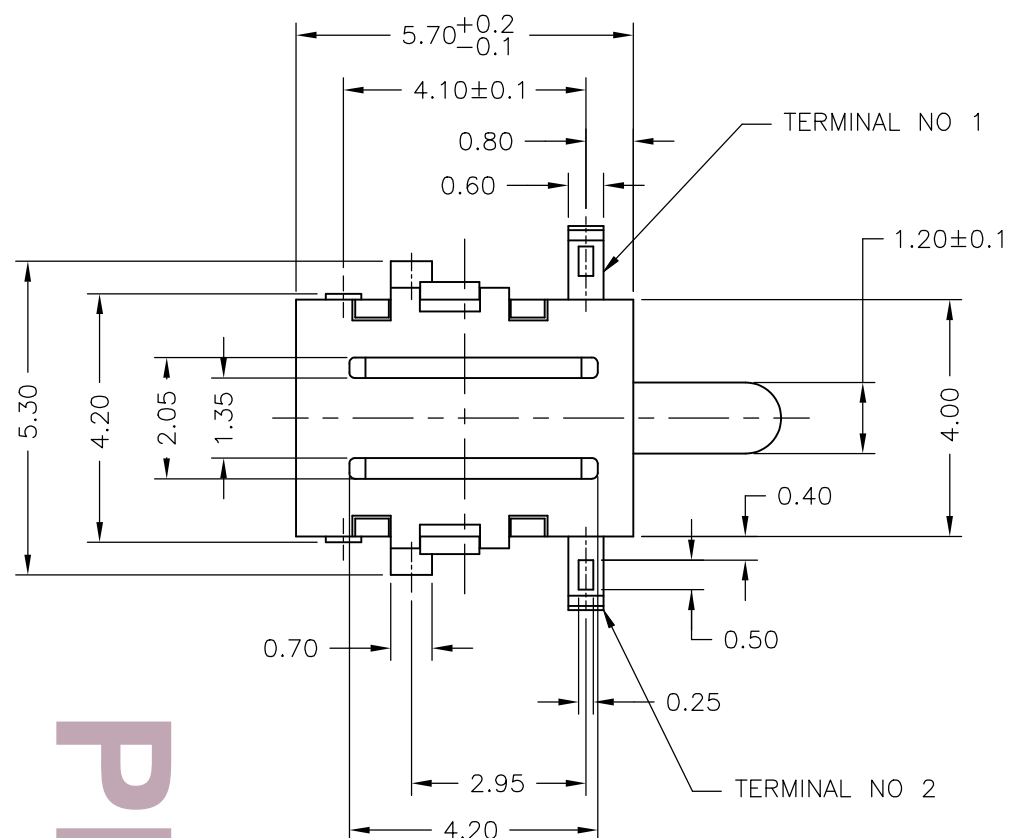


COPYRIGHT - TE Connectivity Ltd.

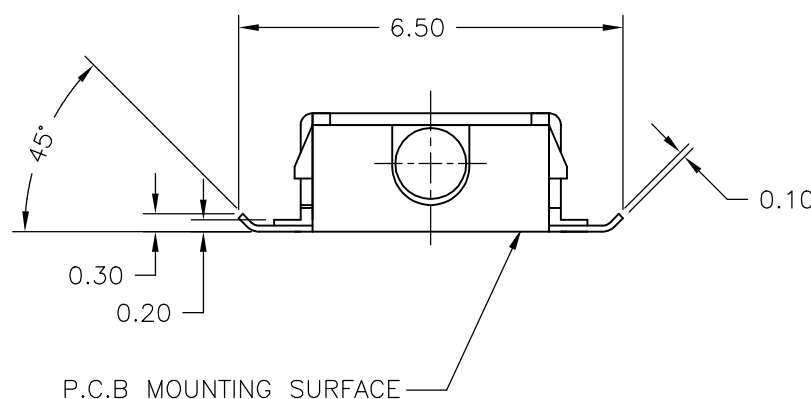
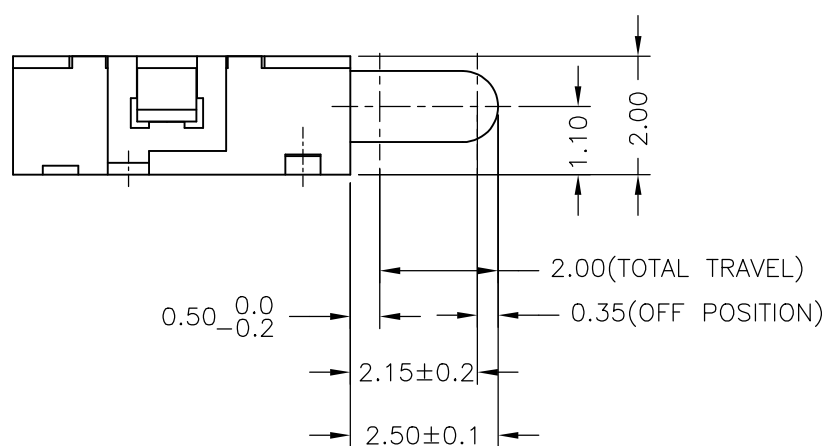
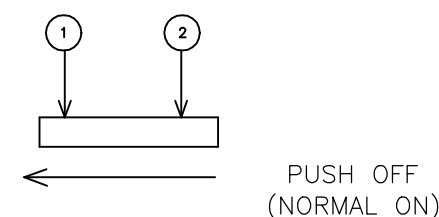
ALL RIGHTS RESERVED.

REVISIONS

P	LTR	DESCRIPTION	DATE	DWN	APVD
	1	NEW DRAWING	19APR2018	RS	AS

2331327-1
AS SHOWNPCB LAYOUT
(VIEWED FROM THE DIRECTION "A")

CIRCUIT DIAGRAM(NORMAL)



PRELIMINARY

THIS DRAWING IS A CONTROLLED DOCUMENT.

DWN 19APR2018
RAVI.SCHK 19APR2018
ALEXANDER SHARPEAPVD 19APR2018
ALEXANDER SHARPE

PRODUCT SPEC

APPLICATION SPEC

WEIGHT

CUSTOMER DRAWING



TE Connectivity Ltd.

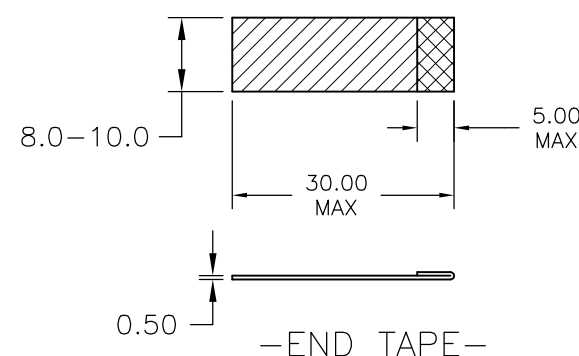
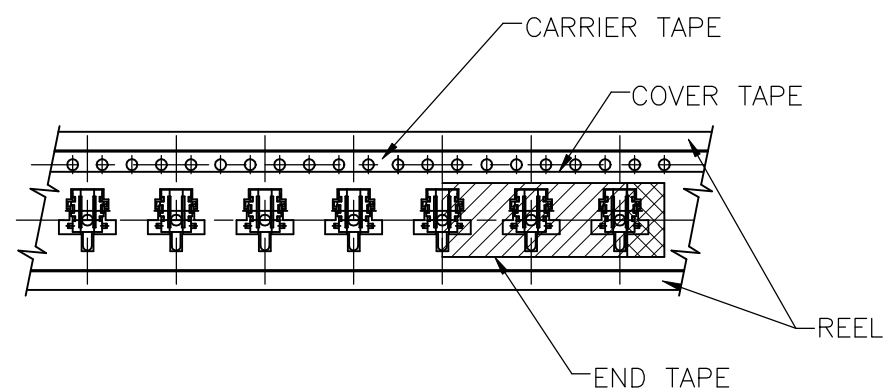
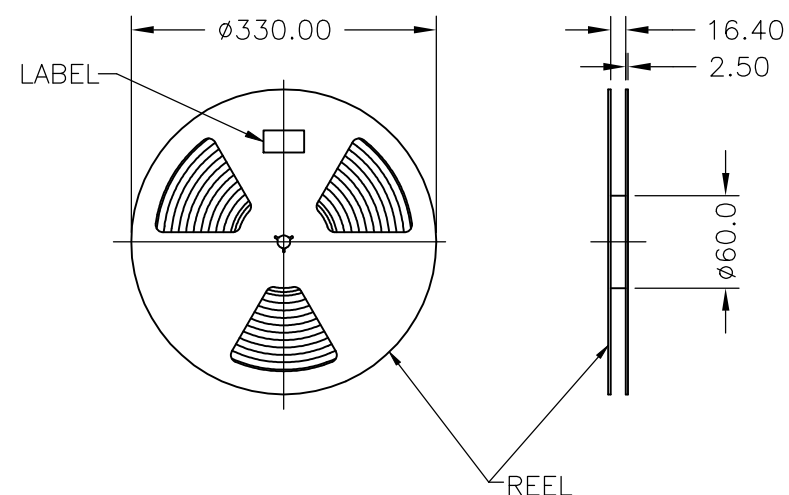
NAME
DETECTOR SWITCH, JJM SERIES,
5.7X4.0mm, HORIZONTAL, SMT, WITHOUT POSTSSIZE CAGE CODE DRAWING NO RESTRICTED TO
A3 00779 C-2331327

SCALE 8:1 SHEET 1 OF 3 REV 1

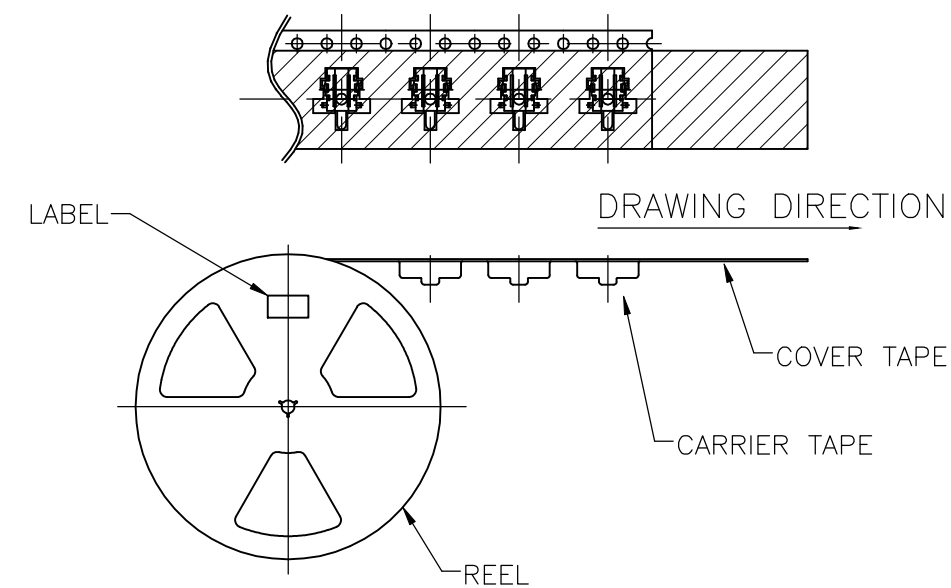
RELEASED FOR PUBLICATION

ALL RIGHTS RESERVED.

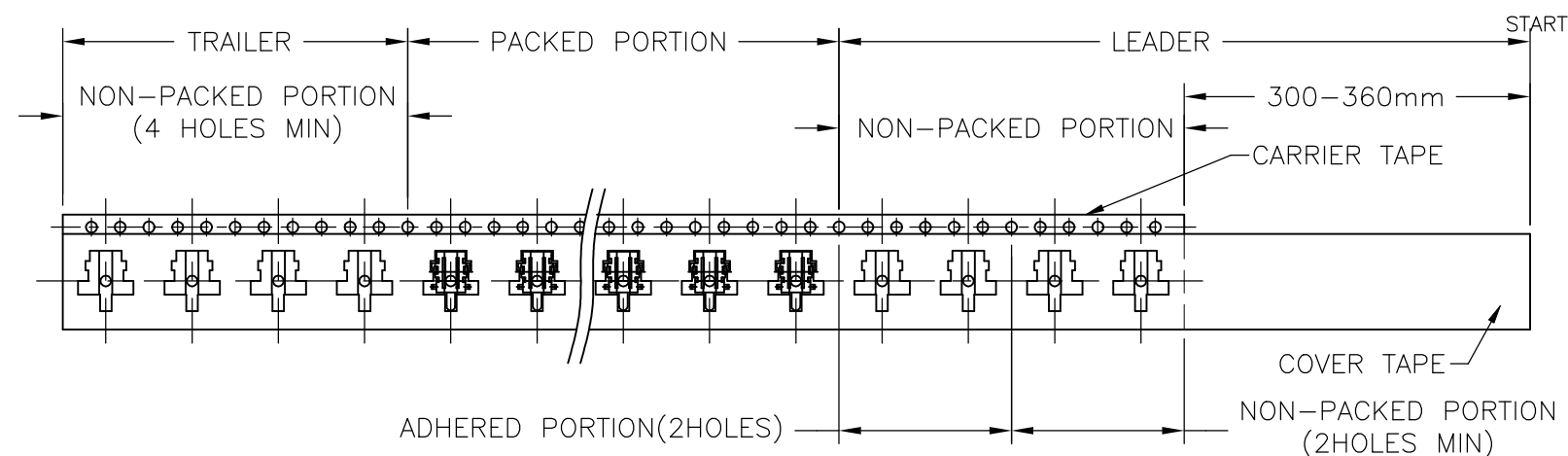
P	LTR	DESCRIPTION	DATE	DWN	APVD
	—	SEE SHEET 1	—	—	—



NOTE
1. 1,900 SWITCHES PER REEL



—THE DIRECTION OF PILOT HOLES—



PRELIMINARY

DWN	19APR2018
RAVI.S	
CHK	19APR2018
ALEXANDER SHARPE	
APVD	19APR2018
ALEXANDER SHARPE	
PRODUCT SPEC	

	WEIGHT
--	--------

CUSTOMER DRAWING

TE Connectivity Ltd.

DETECTOR SWITCH, JJM SERIES,
5.7X4.0mm, HORIZONTAL, SMT, WITHOUT POSTS

C-2331327

SCALE 1 : 1

SHEET 2 OF 4

REV	1
-----	---

4		3		2		1			
THIS DRAWING IS UNPUBLISHED.		RELEASED FOR PUBLICATION		REVISIONS					
© COPYRIGHT - TE Connectivity Ltd.		ALL RIGHTS RESERVED.		P	LTR	DESCRIPTION	DATE	DWN	APVD
					-	SEE SHEET 1	-	-	-
SOLDERING CONDITIONS				1 RATING: DC 12V, 100mA(RESISTIVE LOAD)					
REFLOW SOLDERING:				2 OPERATING FORCE: 70gf MAX					
1 PREHEAT: 150 TO 200°C, 120±20 SECONDS				3 LIFE CYCLE: 50,000 CYCLES WITHOUT LOAD					
2 PEAK TEMPERATURE: 260°C MAXIMUM, 10 SECONDS				4 CONTACT RESISTANCE: 80mΩ MAXIMUM					
3 SOLDERING AREA TEMPERATURE: 217°C, 90 TO 120 SECONDS				5 INSULATION RESISTANCE: 100MΩ MINIMUM					
<div>TEMP. °C</div> <div><div><div>260</div><div>220</div><div>150</div><div>25</div></div><div><div>PREHEATING AREA</div><div>SOLDERING AREA</div><div>PEAK TEMPERATURE</div></div><div>TIME (SECONDS)</div></div> <div>TEMPERATURE PROFILE</div>				6 OPERATING TEMPERATURE RANGE: -10° TO 60°C					
				7 STORAGE TEMPERATURE RANGE: -30° TO 80°C. NOTE: 96 HOURS MAXIMUM FOR CONTINUOUS STORAGE OVER A RANGE -20 TO -30°C AND 70 TO 80°C					
				8 COMPLIANCE- ALL MATERIALS AND FINISHES SHALL COMPLY WITH EU DIRECTIVE 2002/95/EC OF 27 JAN 2003 (RoHS)					
				-	-	-	STAINLESS STEEL	COIL SPRING	
				BLACK	UL 94V-0	-	THERMOPLASTIC	ACTUATOR	
				-	-	SILVER CLAD	COPPER ALLOY	CONTACTOR	
				-	-	SILVER PLATING	COPPER ALLOY	TERMINAL	
				-	-	TIN PLATING	STEEL	COVER	
				WHITE	UL 94V-0	-	THERMOPLASTIC	CASE	
				COLOR	RATING	FINISH	MATERIAL	PART NAME	
JJMH0UG200NCNMRT		2331327-1		THIS DRAWING IS A CONTROLLED DOCUMENT.		DWN 19APR2018 RAVIS			
SMART PART NUMBER		PART NUMBER		DIMENSIONS: mm		CHK 19APR2018 ALEXANDER SHARPE			
				TOLERANCES UNLESS OTHERWISE SPECIFIED:		APVD 19APR2018 ALEXANDER SHARPE			
				0 PLC ± -		PRODUCT SPEC			
				1 PLC ± -		APPLICATION SPEC			
				2 PLC ± 0.20		-			
				3 PLC ± -		WEIGHT			
				4 PLC ± -		CUSTOMER DRAWING			
				ANGLES ± -		SCALE 1:1			
				FINISH -		SHEET 3 OF 3			
						REV 1			
						RESTRICTED TO -			
						SIZE A3			
						CAGE CODE 00779			
						DRAWING NO C-2331327			
						TE Connectivity Ltd.			
						NAME DETECTOR SWITCH, JJM SERIES, 5.7X4.0mm, HORIZONTAL, SMT, WITHOUT POSTS			
						PRELIMINARY			