

THIS DRAWING IS UNPUBLISHED.

RELEASED FOR PUBLICATION

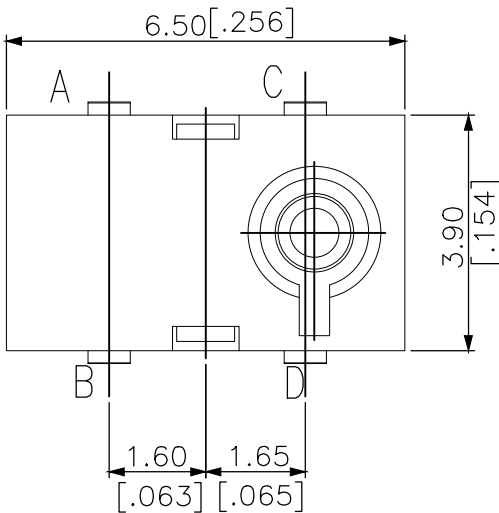
- . - .

REVISIONS

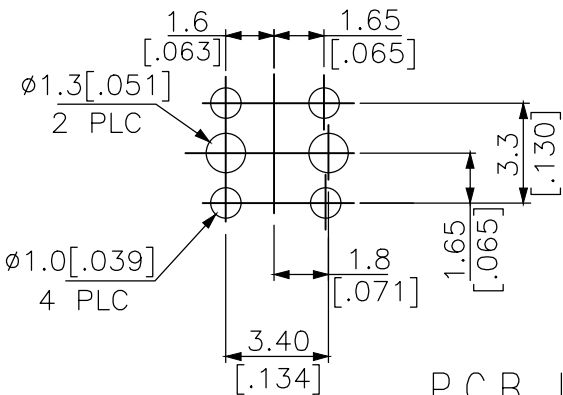
© COPYRIGHT - TE Connectivity Ltd.

ALL RIGHTS RESERVED.

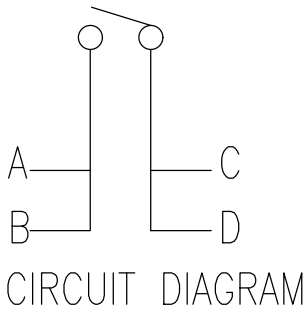
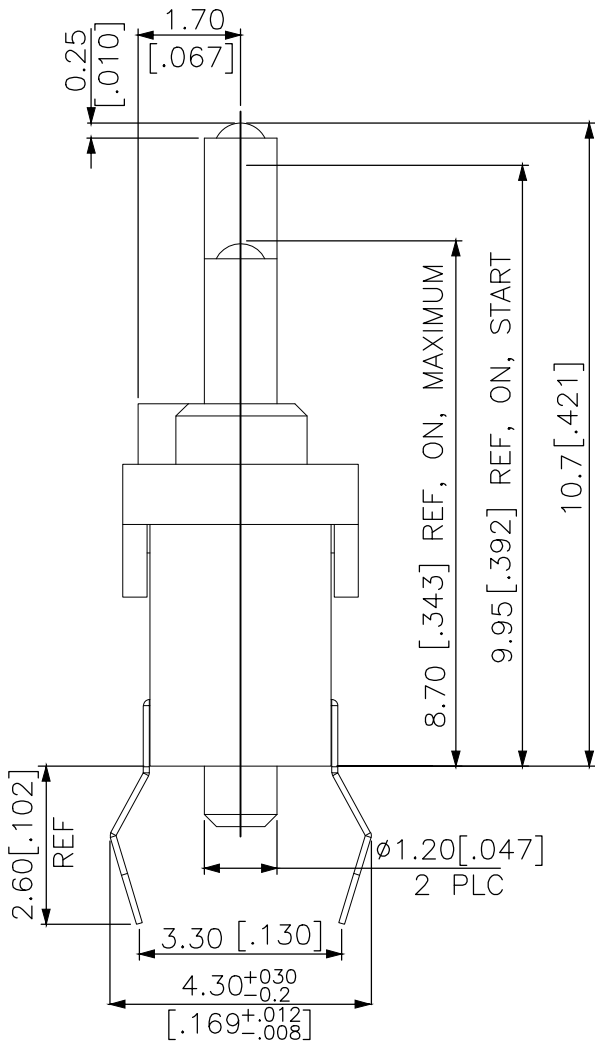
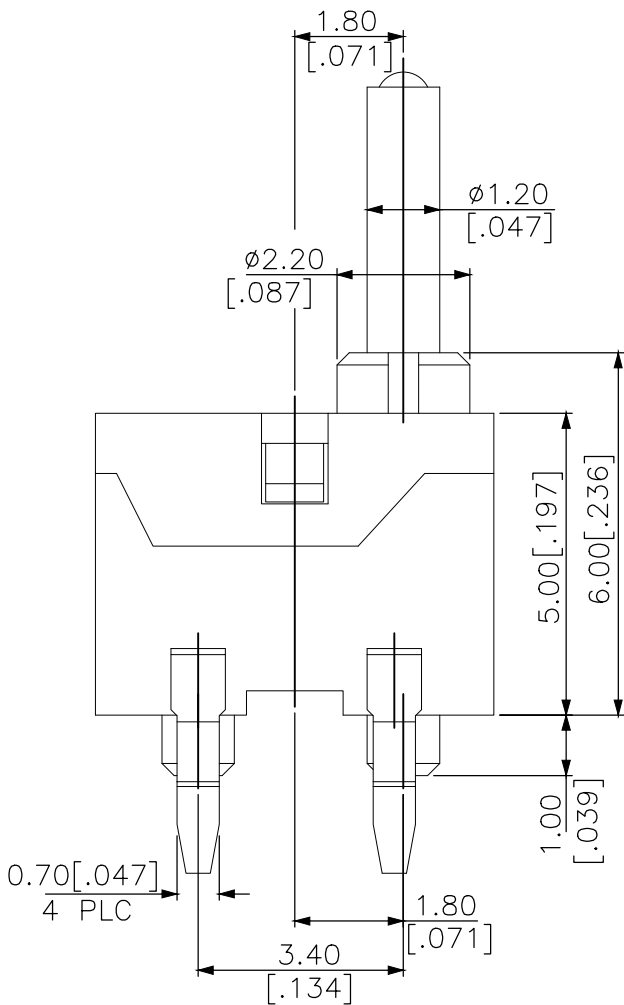
P	LTR	DESCRIPTION	DATE	DWN	APVD
	1	NEW DRAWING	03MAY2018	GCM	AS




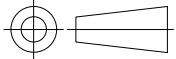
2331396-1
AS SHOWN



P.C.B. LAYOUT



PRELIMINARY

THIS DRAWING IS A CONTROLLED DOCUMENT.		DWN GANESH C M 03MAY2018		<div>PRELIMINARY</div> <div>TE Connectivity Ltd.</div> <div>NAME</div> <div>SWITCH, DETECTOR, JXL SERIES, 6.5X3.9mm, VERTICAL, THROUGH HOLE, POSTS, 10.7mm</div> <div>—</div>						
DIMENSIONS: mm [INCHES]	TOLERANCES UNLESS OTHERWISE SPECIFIED:	CHK ALEXANDER SHARPE 03MAY2018	APVD ALEXANDER SHARPE 03MAY2018							
		PRODUCT SPEC								
		APPLICATION SPEC								
	0 PLC ± — 1 PLC ± — 2 PLC ± 0.20 [.008] 3 PLC ± — 4 PLC ± — ANGLES ± —	—		SIZE	CAGE CODE	DRAWING NO	RESTRICTED TO			
		—		A3	00779	C-2331396	—			
MATERIAL	FINISH	WEIGHT		CUSTOMER DRAWING				SCALE	SHEET	REV
—	—							NTS	1 OF 2	1

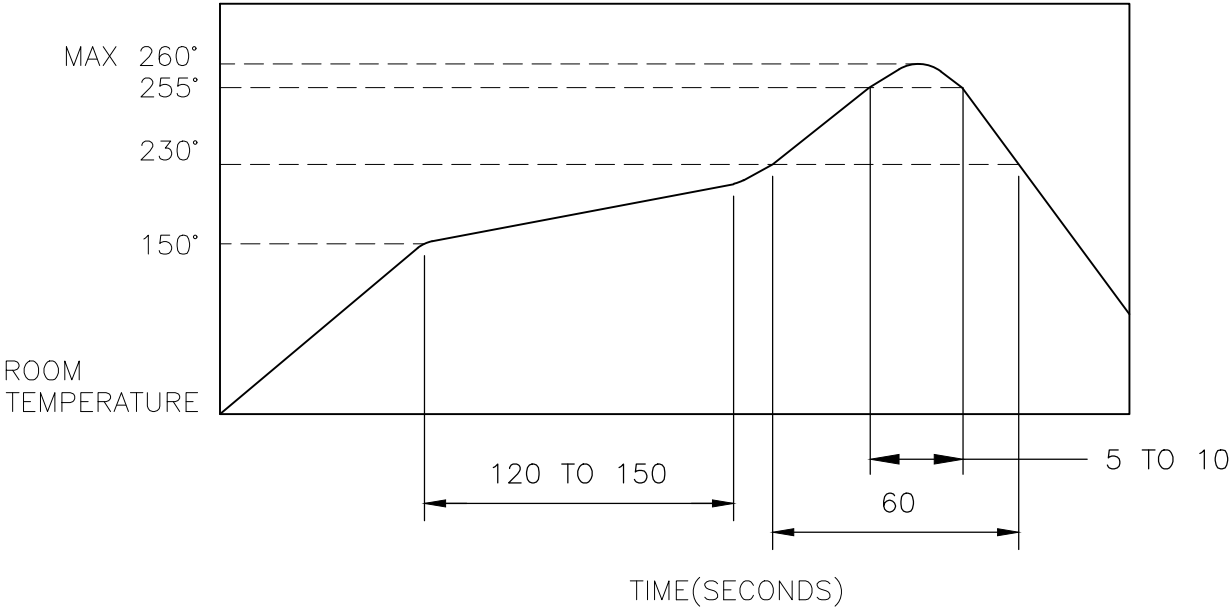
REVISIONS					
P	LTR	DESCRIPTION	DATE	DWN	APVD
	—	SEE SHEET 1	—	—	—

NOTES:

1. MATERIALS
ACTUATOR: THERMOPLASTIC, UL 94V-0, BLACK
BASE: THERMOPLASTIC, UL 94V-0, BLACK
COVER: THERMOPLASTIC, UL 94V-0, BLACK
TERMINAL: COPPER ALLOY, SILVER PLATE
CONTACT: STAINLESS STEEL, SILVER CLAD
2. PACKAGING: 70 SWITCHES PER TUBE

TUBE LENGTH: 500 [19.68] REF
3. COMPLIANCE:
ALL MATERIALS AND FINISHES SHALL COMPLY WITH EU
DIRECTIVE 2002/95/EC OF 27JAN2003(RoHS)
4. SPECIFICATIONS:
RATING: 5mA 5V DC
CONTACT RESISTANCE: 500mΩ MAXIMUM(INITIAL)
INSULATION RESISTANCE: 100MΩ MINIMUM AT 250V DC
DIELECTRIC STRENGTH: 250V AC, 1 MINUTE
OPERATING LIFE: 50,000 CYCLES WITH LOAD
TOTAL TRAVEL: 2.0 [.079]
ACTUATION FORCE: 35gf MAXIMUM
OPERATING TEMPERATURE: -20°C TO 70° C
STORAGE TEMPERATURE: -30°C TO 80° C

5. SOLDER CONDITIONS:



THE CONDITION MENTIONED ABOVE IS THE TEMPERATURE ON THE CU FOIL OF THE PCB SURFACE. THERE ARE CASES WHERE THE BOARD’S TEMPERATURE GREATLY DIFFERS FROM THE SWITCH’S SURFACE. DO NOT TO ALLOW SWITCH’S SURFACE TEMPERATURE TO EXCEED 260°C

MANUAL SOLDERING


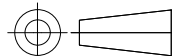
SOLDERING TEMPERATURE	MAX.350°C.
CONTINUOUS SOLDERING TIME	MAX. 5 SECONDS.

PRECAUTIONS IN HANDLING

1. CARE SHOULD BE EXERCISED SO THAT FLUX FROM THE UPPER PART OF THE PRINTED CIRCUIT BOARD DOES NOT ADHERE TO THE SWITCH.

JJLVOUT1070NOPPRTB	2331396-1
SMART PART NUMBER	PART NUMBER

PRELIMINARY

THIS DRAWING IS A CONTROLLED DOCUMENT.		DWN GANESH C M 03MAY2018		<div>TE Connectivity Ltd.</div>				
DIMENSIONS: mm [INCHES]	TOLERANCES UNLESS OTHERWISE SPECIFIED:	CHK ALEXANDER SHARPE 03MAY2018						
		APVD ALEXANDER SHARPE 03MAY2018	NAME SWITCH, DETECTOR, JVL SERIES, 6.5X3.9mm, VERTICAL, THROUGH HOLE, POSTS, 10.7mm —					
	0 PLC ± — 1 PLC ± — 2 PLC ± 0.20 [.008] 3 PLC ± — 4 PLC ± — ANGLES ± —	PRODUCT SPEC —	SIZE A3			CAGE CODE 00779	DRAWING NO C-2331396	RESTRICTED TO —
		APPLICATION SPEC —						
MATERIAL —	FINISH —	WEIGHT						
			CUSTOMER DRAWING					
			SCALE NTS		SHEET 2 of 2		REV 1	