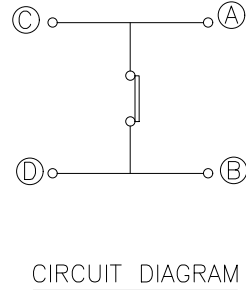
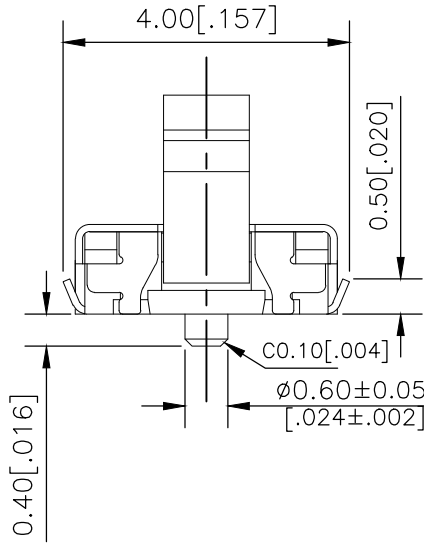
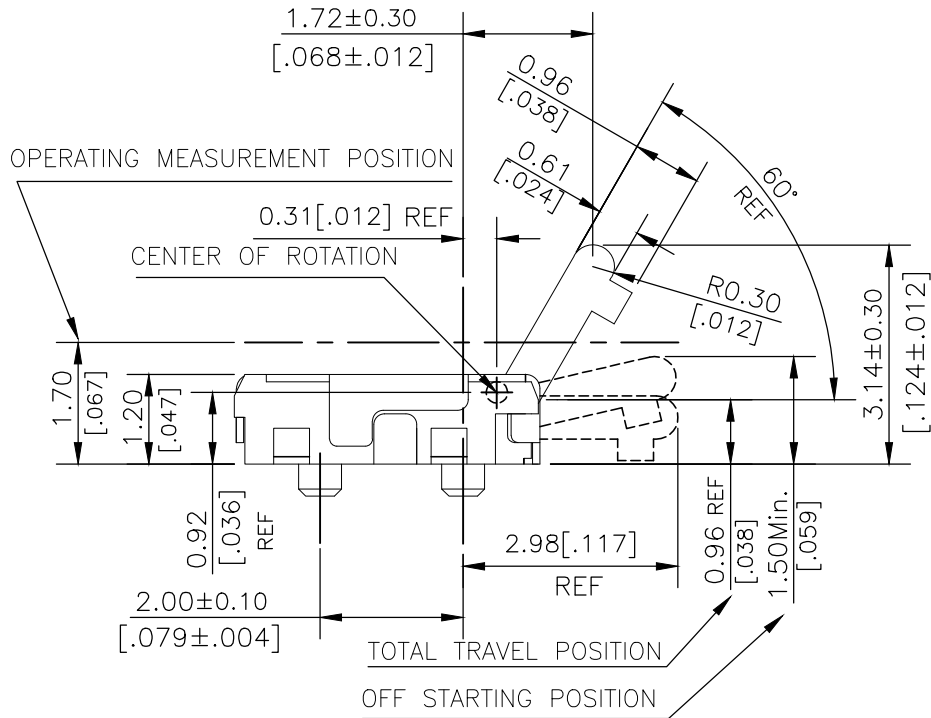
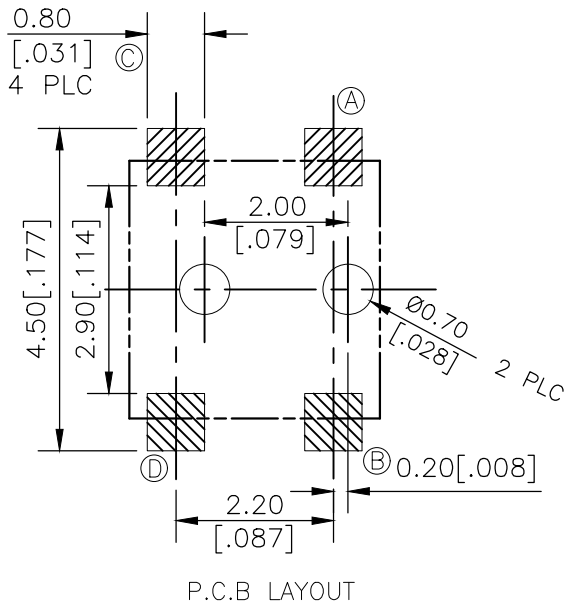
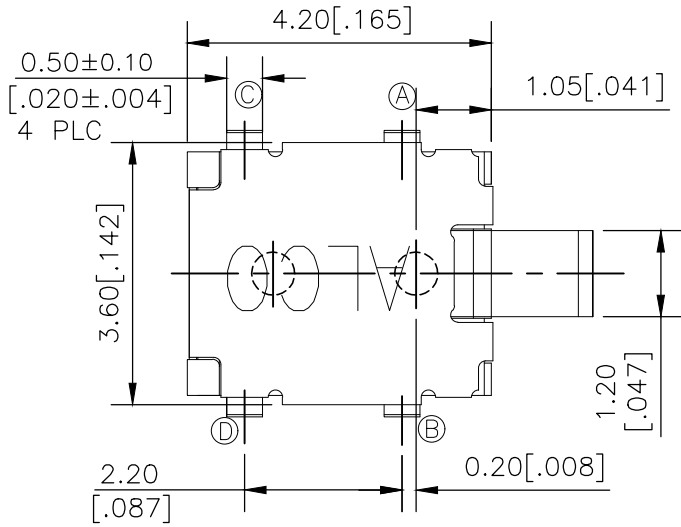


REVISIONS					
P	LTR	DESCRIPTION	DATE	DWN	APVD
	1	NEW DRAWING	07MAR2018	GCM	AS

2331389-1
AS SHOWN



PRELIMINARY

THIS DRAWING IS A CONTROLLED DOCUMENT.		DWN GANESH C M 07MAR2018	<div><div><div>TE</div><div>TE Connectivity Ltd.</div></div><div>PRELIMINARY</div><div>SWITCH, DETECTOR, JJD SERIES, 4.2X3.6mm, VERTICAL, SMT, POSTS</div></div>			
DIMENSIONS: mm [INCHES]	TOLERANCES UNLESS OTHERWISE SPECIFIED:	CHK ALEXANDER SHARPE 07MAR2018				
		APVD ALEXANDER SHARPE 07MAR2018				
		PRODUCT SPEC				
	MATERIAL	APPLICATION SPEC	NAME			
		WEIGHT	SIZE	CAGE CODE	DRAWING NO	RESTRICTED TO
CUSTOMER DRAWING		A300779		C-2331389		—
				SCALE	SHEET	REV
				NTS	1 OF 3	1

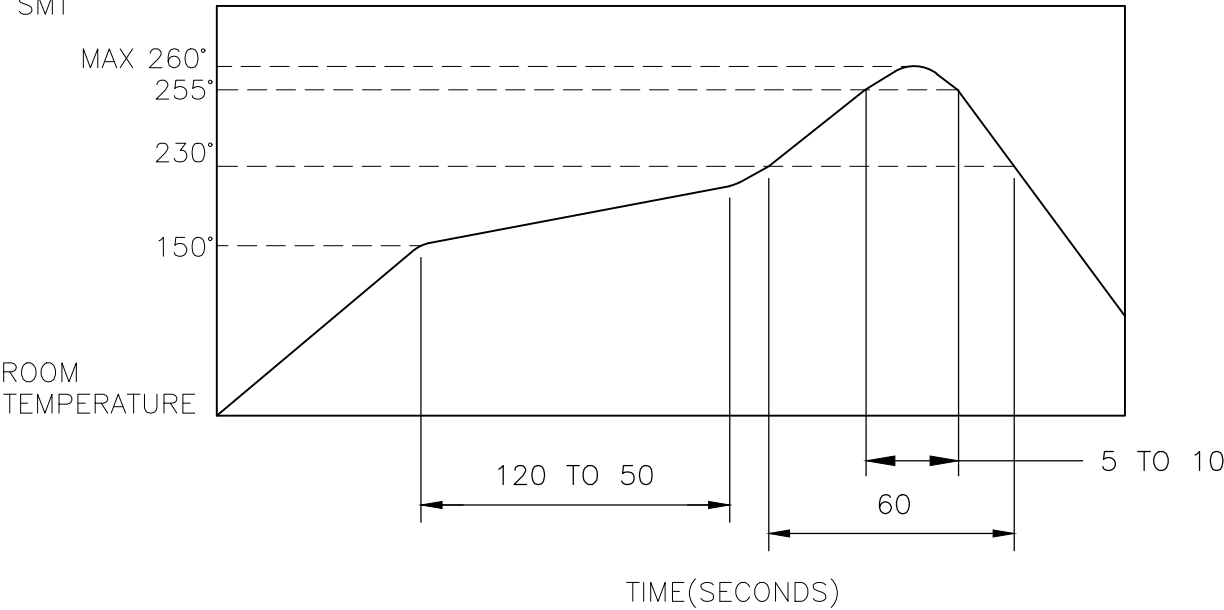
THIS DRAWING IS UNPUBLISHED.	RELEASED FOR PUBLICATION
© COPYRIGHT — TE Connectivity Ltd.	ALL RIGHTS RESERVED.

REVISIONS					
P	LTR	DESCRIPTION	DATE	DWN	APVD
	—	SEE SHEET 1	—	—	—

NOTES:

1. MATERIALS:
ACTUATOR: THERMOPLASTIC, UL 94V-0, BLACK
BODY: THERMOPLASTIC, UL 94V-0, BLACK
COVER: STAINLESS STEEL
TERMINAL: COPPER ALLOY, SILVER PLATE
CONTACT: COPPER ALLOY, SILVER PLATE
2. COMPLIANCE:
ALL MATERIALS AND FINISHES SHALL COMPLY WITH EU
DIRECTIVE 2002/95/EC OF 27JAN2003(RoHS)
3. SPECIFICATIONS:
RATING: 100µA, 3V DC TO 1mA, 5V DC
CONTACT RESISTANCE: 3Ω MAXIMUM(INITIAL)
INSULATION RESISTANCE: 100MΩ MINIMUM AT 100 V DC
DIELECTRIC STRENGTH: 100 V AC, 1 MINUTE
OPERATING LIFE: 50,000 CYCLES WITH LOAD
TOTAL TRAVEL: 2.18 [.086]
ACTUATION FORCE: 35gf MAXIMUM
OPERATING TEMPERATURE: -40°C TO 85° C
STORAGE TEMPERATURE: -20°C TO 70° C

4. SOLDER CONDITIONS:
SMT



THE CONDITION MENTIONED ABOVE IS THE TEMPERATURE ON THE CU FOIL OF THE PCB SURFACE. THERE ARE CASES WHERE THE BOARD’S TEMPERATURE GREATLY DIFFERS FROM THE SWITCH’S SURFACE. DO NOT ALLOW SWITCH’S SURFACE TEMPERATURE TO EXCEED 260°C.

MANUAL SOLDERING


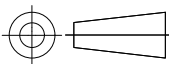
SOLDERING TEMPERATURE	MAX 350°C
CONTINUOUS SOLDERING TIME	5 SECONDS MAX.

PRECAUTIONS IN HANDLING

1. CARE SHOULD BE EXERCISED SO THAT FLUX FROM THE UPPER PART OF THE PRINTED CIRCUIT BOARD DOES NOT ADHERE TO THE SWITCH.

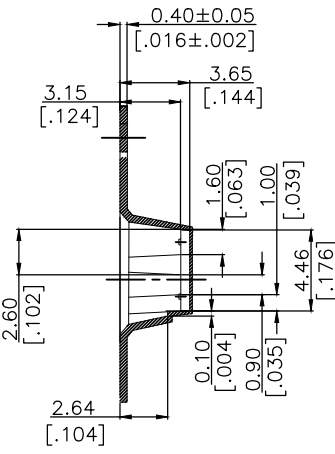
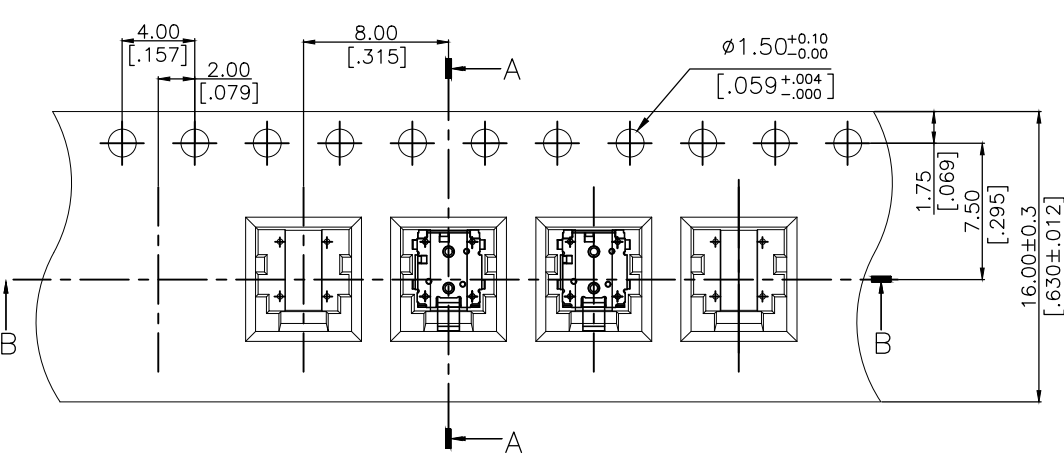
JJDVDUJ314NCPMRTR	2331389-1
SMART PART NUMBER	PART NUMBER

PRELIMINARY

THIS DRAWING IS A CONTROLLED DOCUMENT.		DWN GANESH C M 07MAR2018	<div>TE Connectivity Ltd.</div>			
DIMENSIONS: mm [INCHES]	TOLERANCES UNLESS OTHERWISE SPECIFIED:	CHK ALEXANDER SHARPE 07MAR2018				
		APVD ALEXANDER SHARPE 07MAR2018	NAME SWITCH, DETECTOR, JJD SERIES, 4.2X3.6mm, VERTICAL, SMT, POSTS —			
	0 PLC ± — 1 PLC ± — 2 PLC ± 0.20 [.008] 3 PLC ± — 4 PLC ± — ANGLES ± —	PRODUCT SPEC —	SIZE	CAGE CODE	DRAWING NO	RESTRICTED TO —
		APPLICATION SPEC —	A3	00779	C=2331389	
MATERIAL —		FINISH —	WEIGHT			
CUSTOMER DRAWING			SCALE	SHEET		REV
			NTS	2 of 3		1

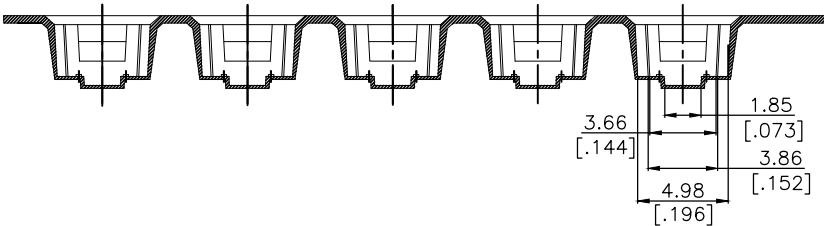
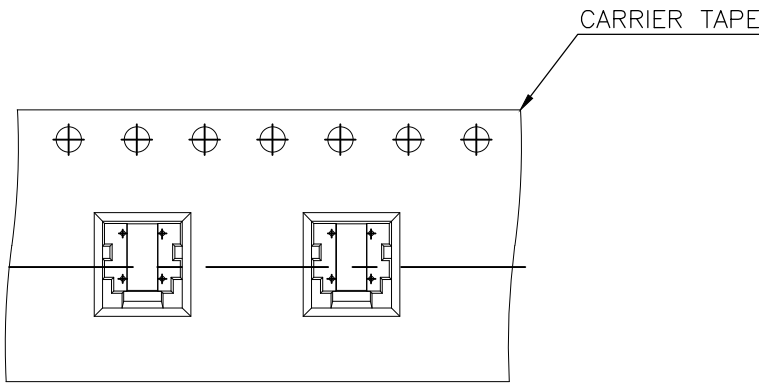
REVISIONS					
P	LTR	DESCRIPTION	DATE	DWN	APVD
	—	SEE SHEET 1	—	—	—

PACKAGING:
2000 SWITCHES PER REEL
THE DIMENSION OF CARRIER TAPE, COVER TAPE AND REEL

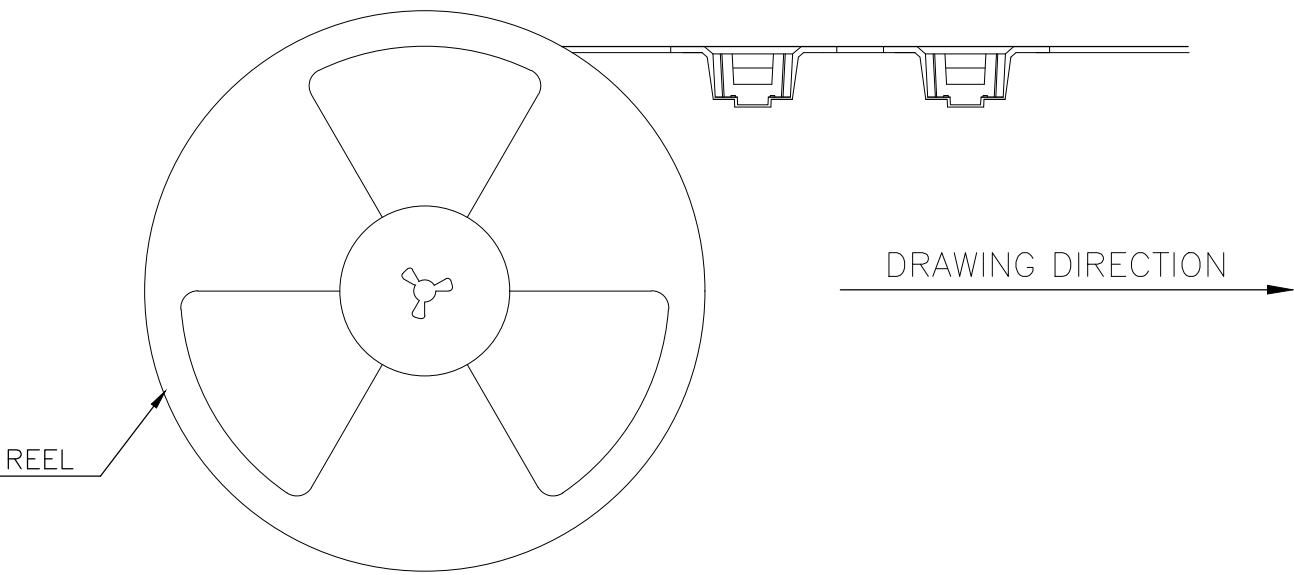
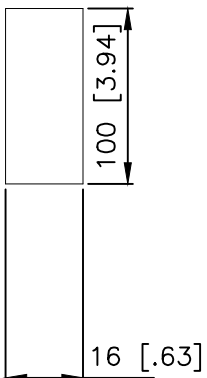
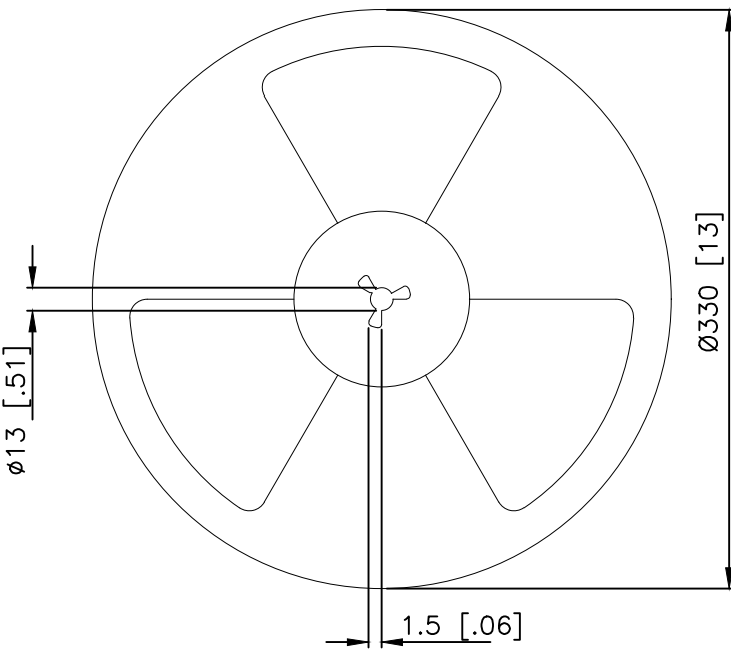


SECTION A-A

THE DIRECTION OF PILOT HOLES




SECTION B-B



DRAWING DIRECTION

PRELIMINARY

THIS DRAWING IS A CONTROLLED DOCUMENT.		DWN GANESH C M 07MAR2018	 TE Connectivity Ltd.		
DIMENSIONS: mm [INCHES]		CHK ALEXANDER SHARPE 07MAR2018			
TOLERANCES UNLESS OTHERWISE SPECIFIED:		APVD ALEXANDER SHARPE 07MAR2018	NAME SWITCH, DETECTOR, JJD SERIES, 4.2X3.6mm, VERTICAL, SMT, POSTS		
MATERIAL		PRODUCT SPEC	SIZE A3		
FINISH		APPLICATION SPEC	CAGE CODE 00779		
—		WEIGHT	DRAWING NO C-2331389		
—		CUSTOMER DRAWING	RESTRICTED TO —		
		SCALE NTS	SHEET 3 OF 3		
			REV 1		