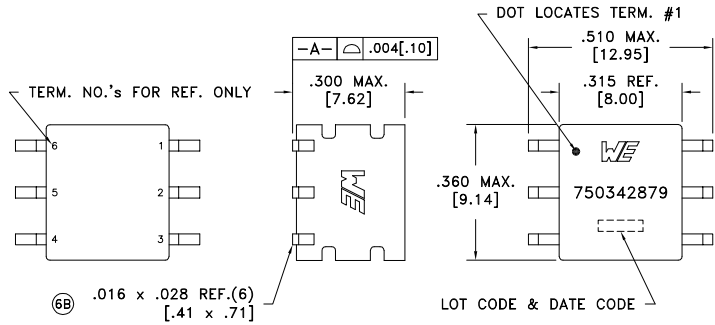


CUSTOMER TERMINAL	RoHS	LEAD(Pb)-FREE
Sn96%, Ag4%	Yes	Yes



ELECTRICAL SPECIFICATIONS @ 25°C unless otherwise noted:

PARAMETER	TEST CONDITIONS	VALUE
D.C. RESISTANCE	1-3 @20°C	0.330 ohms max.
D.C. RESISTANCE	6-4 @20°C	0.750 ohms max.
INDUCTANCE	1-2 100kHz, 10mVAC, Ls	50uH min.
DIELECTRIC	1-6 6250Vrms, 1 second	5000Vrms, 1 minute
TURNS RATIO	(6-4):(1-3)	3.5:1, ±2%



6C

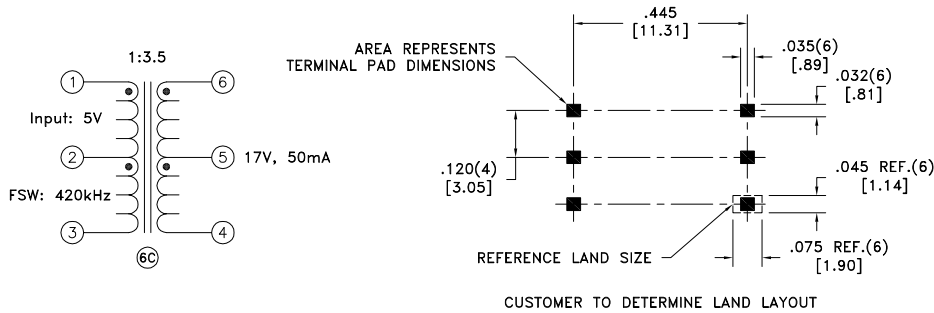
GENERAL SPECIFICATIONS:

OPERATING TEMPERATURE RANGE: -40°C to +125°C including temp rise.

Designed to comply with 9.2mm min. creepage and 8.0mm min. clearance as defined by IEC61800-5-1.

COPLANARITY: All 6 terminals must lie on a plane within .004 [0.10] of Surface A after lead tinning.

6B Qualified to AEC-Q200.



Wire insulation & RoHS status not affected by wire color.  
Wire insulation color may vary depending on availability.

REV.	DATE	Packaging Specifications Method: Tape & Reel PKG-0948 www.we-online.com/midcom		Tolerances unless otherwise specified: Angles: ±1° Fractions: ±1/64 Decimals: ±.005 [.13] Footprint: ±.005 [.13]	DRAWING TITLE <b>TRANSFORMER</b>	PART NO. <b>750342879</b>
6C	4/18					
6B	9/16					
6A	1/16	SEE REVISION SHEET FOR REVISION LEVEL		This drawing is dual dimensioned. Dimensions in brackets are in millimeters.	eiSos p/n: 750342879	SPECIFICATION SHEET 1 OF 1