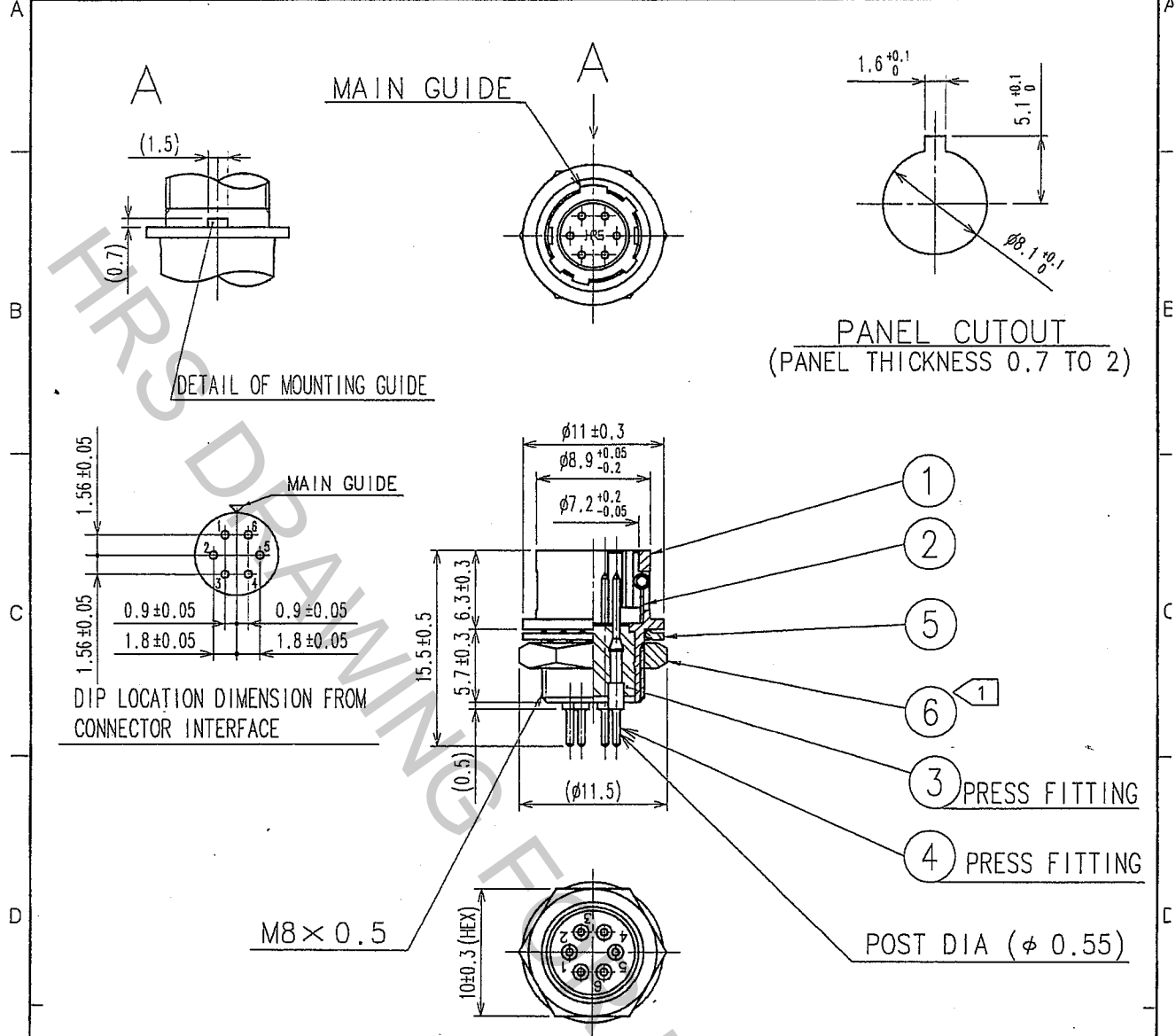


Sep.1.2018 Copyright 2018 HIROSE ELECTRIC CO., LTD. All Rights Reserved.  
 In case that the application demands a high level of reliability, such as automotive,  
 please contact a company representative for further information.

1		2			3			4		
COUNT	DESCRIPTION OF REVISIONS	BY	CHKD	DATE	COUNT	DESCRIPTION OF REVISIONS	BY	CHKD	DATE	
△				..	△				..	
△				..	△				..	
△				..	△				..	



NOTE: ① THE RECOMMENDED TIGHTEN TORQUE OF REF.NO. ⑥: 1.5 N · m.  
 ADHESIVE LOCTITE 242, HENKEL JAPAN LOCTITE OR EQUIVALENT IS  
 RECOMMENDED TO PREVENT REF.NO. ⑥ FROM LOOSENING.

NO.	MATERIAL	FINISH, REMARKS	NO.	MATERIAL	FINISH, REMARKS
3	POLYAMIDE	(BLUE)	6	BRASS	NICKEL PLATED
2	STAINLESS STEEL		5	PHOSPHOR BRONZE	NICKEL PLATED
1	ZINC ALLOY	MATTE FINISH NICKEL PLATED	4	BRASS	OVERPLATING : GOLD 0.2µm min UNDERPLATING : NICKEL 2.0µm min

CODE NO. (OLD)	DRAWN	DESIGNED	CHECKED	APPROVED	RELEASED
	T.SUZUKI	y.y. Yamada	R. Gawa	M. Serto	
	06.07.22	06.07.22	06.07.22	06.07.22	

 SCALE 2 : 1 UNITS mm	DRAWING NO. EDC4-025293-73	PART NO. HR10-7R-6PA(73)
	 HIROSE ELECTRIC CO., LTD.	CODE NO. CL110-0061-0-73

TO
R