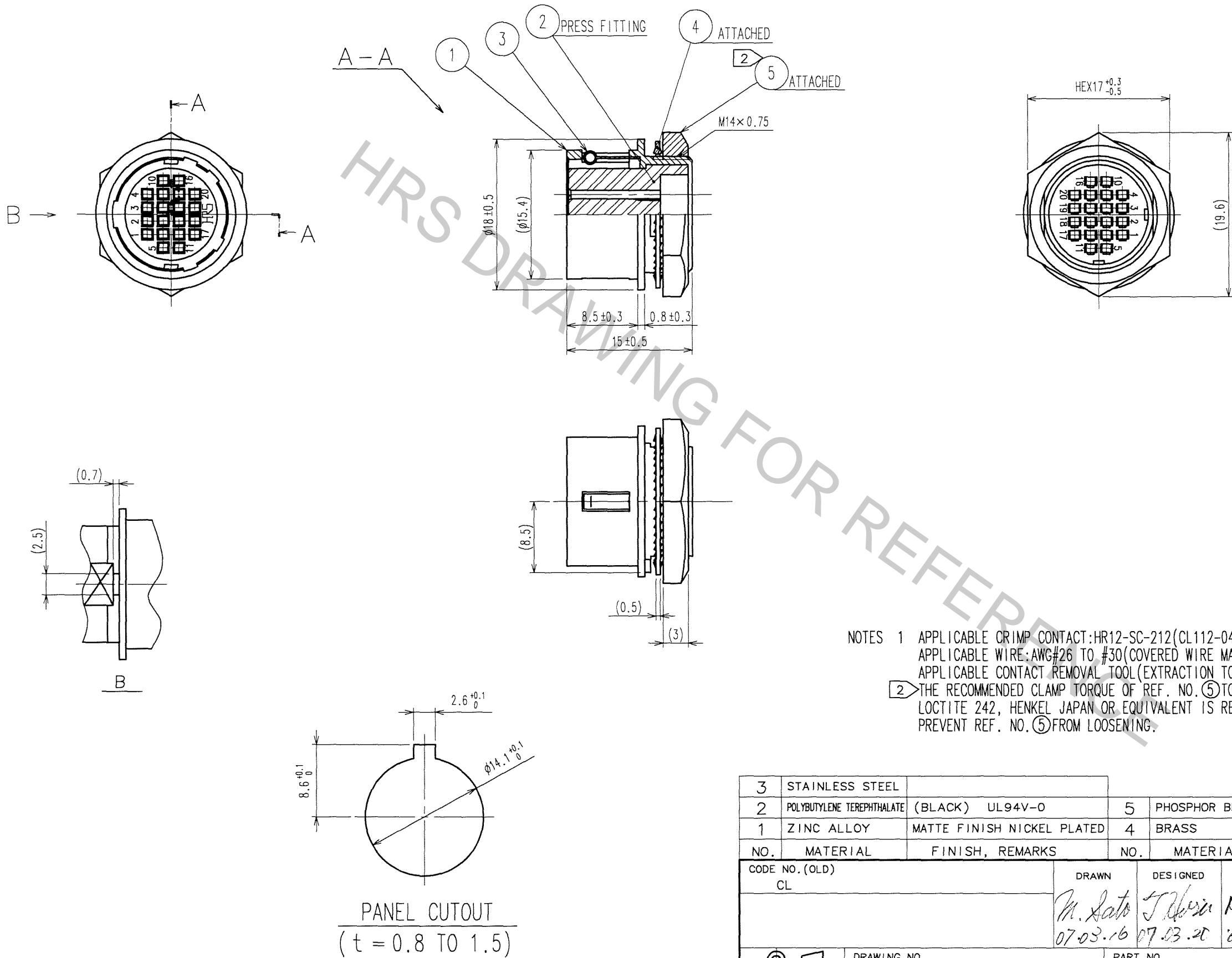


Sep.1.2018 Copyright 2018 HIROSE ELECTRIC CO., LTD. All Rights Reserved.
In case that the application demands a high level of reliability, such as automotive,
please contact a company representative for further information.

TO
R

A
B
C
D
E
F



NOTES 1 APPLICABLE CRIMP CONTACT:HR12-SC-212(CL112-0408-9)
APPLICABLE WIRE:AWG#26 TO #30(COVERED WIRE MAX,OUTSIDE DIA.φ 1)
APPLICABLE CONTACT REMOVAL TOOL(EXTRACTION TOOL):HR12-SC-TP(CL150-0050-3)
2 THE RECOMMENDED CLAMP TORQUE OF REF. NO. ⑤ TO BE 2 TO 2.5 N·m.
LOCTITE 242, HENKEL JAPAN OR EQUIVALENT IS RECOMMENDED TO
PREVENT REF. NO. ⑤ FROM LOOSENING.

3	STAINLESS STEEL		5	PHOSPHOR BRONZE	NICKEL PLATING
2	POLYBUTYLENE TEREPHTHALATE	(BLACK) UL94V-0	4	BRASS	NICKEL PLATING
1	ZINC ALLOY	MATTE FINISH NICKEL PLATED			
NO.	MATERIAL	FINISH, REMARKS	NO.	MATERIAL	FINISH, REMARKS
CODE NO. (OLD)	CL	DRAWN	DESIGNED	CHECKED	APPROVED
		M. Sato	T. Hori	M. Sato	M. Sato
		07-03-16	07-03-20	07-03-20	07-03-20
SCALE	2 : 1	DRAWING NO.	EDC3-023284-73	PART NO.	HR10A-13R-20SC(73)
UNITS	mm	HRS	HIROSE ELECTRIC CO., LTD	CODE NO.	CL110-0703-6-73

COUNT	DESCRIPTION OF REVISIONS	BY	CHKD	DATE	COUNT	DESCRIPTION OF REVISIONS	BY	CHKD	DATE
△				..	△				..
△				..	△				..
△				..	△				..

A
B
C
D
E
F