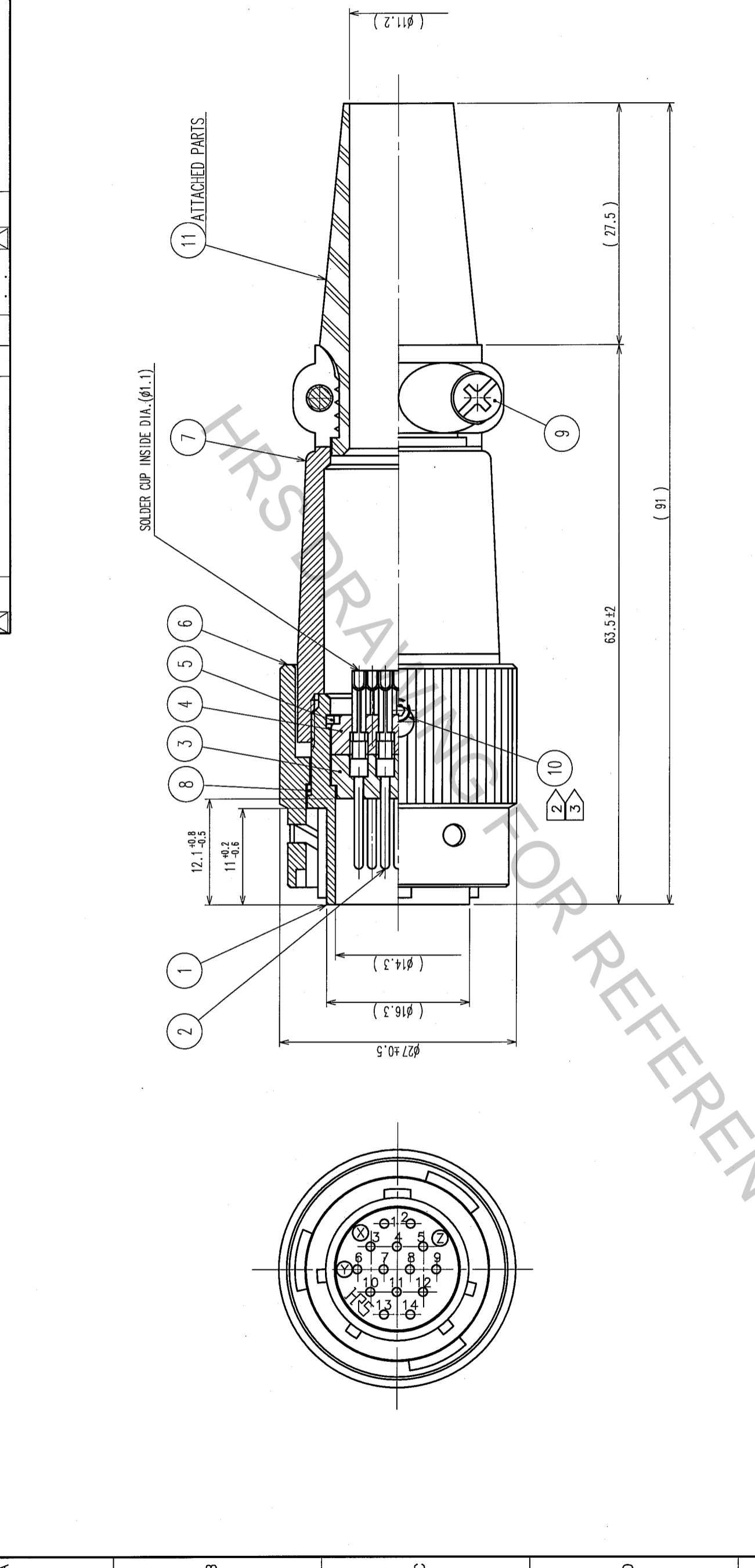


| NO. | DATE | BY | CHKD | DESCRIPTION OF REVISIONS | COUNT |
|-----|------|----|------|--------------------------|-------|
| 1 | | | | | |
| 2 | | | | | |
| 3 | | | | | |
| 4 | | | | | |
| 5 | | | | | |
| 6 | | | | | |
| 7 | | | | | |
| 8 | | | | | |

| NO. | DATE | BY | CHKD | DESCRIPTION OF REVISIONS | COUNT |
|-----|------|----|------|--------------------------|-------|
| 1 | | | | | |
| 2 | | | | | |
| 3 | | | | | |
| 4 | | | | | |
| 5 | | | | | |
| 6 | | | | | |
| 7 | | | | | |
| 8 | | | | | |

In case that the application demands a high level of reliability, such as automotive, please contact a company representative for further information.



- NOTES
- 1 ROTATION EXAMPLES OF REF. ① AND ② ARE SHOWN.
 - 2 THE RECOMMENDED CLAMP TORQUE OF REF. NO. ①: 0.2 TO 0.3 N · m.
 - 3 ACROSS FLATS OF HEXAGON HOLE OF REF. NO. ① TO BE 1.27.

| NO. | MATERIAL | FINISH, REMARKS | NO. | MATERIAL | FINISH, REMARKS |
|-----|----------------------|----------------------------|-----|-----------------|--|
| 6 | ALUMINIUM ALLOY | MATTE FINISH NICKEL PLATED | 11 | CR | (BLACK) |
| 5 | PHOSPHOR BRONZE | NICKEL PLATING | 10 | STEEL | NICKEL PLATING JIS B 1177 HEXAGON SOCKET SET SCREW M2.6x0.45x2 |
| 4 | PHENOL-FORMAL DEHYDE | (BLACK) UL94V-0 | 9 | BRASS | NICKEL PLATING JIS B 1111 PIN HEAD MACHINE SCREW M2x0.5x8 |
| 3 | PHENOL-FORMAL DEHYDE | (BLACK) UL94V-0 | 8 | POLYACETAL | |
| 2 | BRASS | SILVER PLATING 2μm min. | 7 | ALUMINIUM ALLOY | MATTE FINISH NICKEL PLATED |
| 1 | ALUMINIUM ALLOY | NICKEL PLATING | | | |
| NO. | MATERIAL | FINISH, REMARKS | NO. | MATERIAL | FINISH, REMARKS |

CODE NO. (OLD)
CL

DRAWN
M. Hanyu

DESIGNED
M. Nagano

CHECKED
E. Hamai

APPROVED
M. Sato

RELEASED

DATE
05.8.26

DATE
05.08.26

DATE
05.08.30

PART NO.
JRC16BP-14P(71)

DRAWING NO.
EDC3-009737-71

SCALE
2 : 1

UNITS
mm

HIROSE ELECTRIC CO., LTD

CL114-0251-1-71