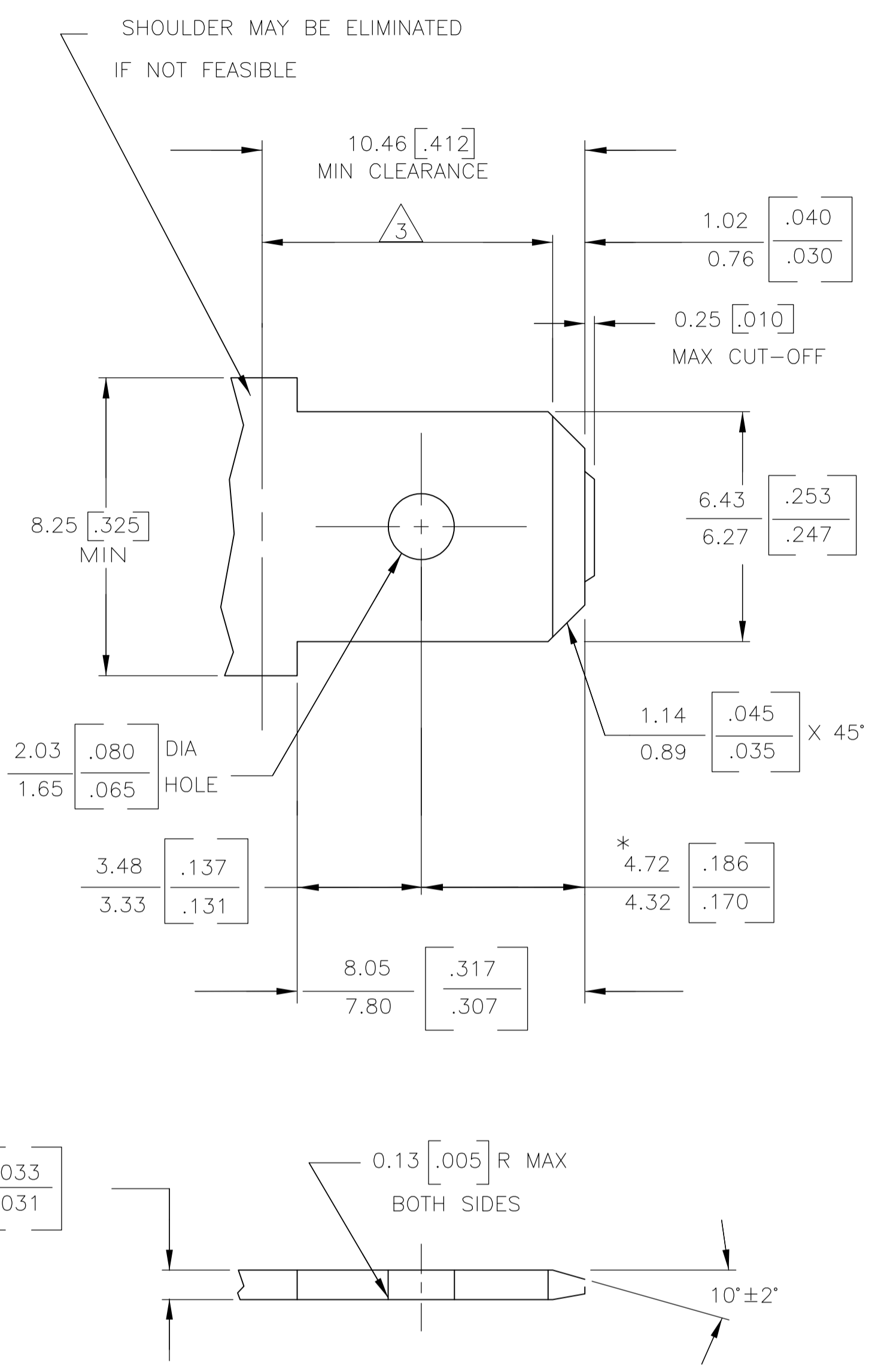
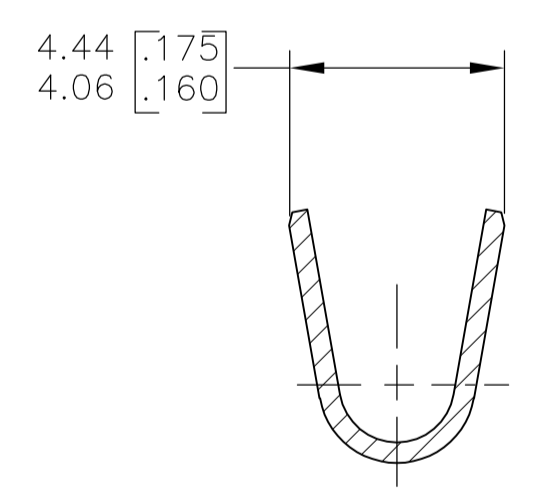
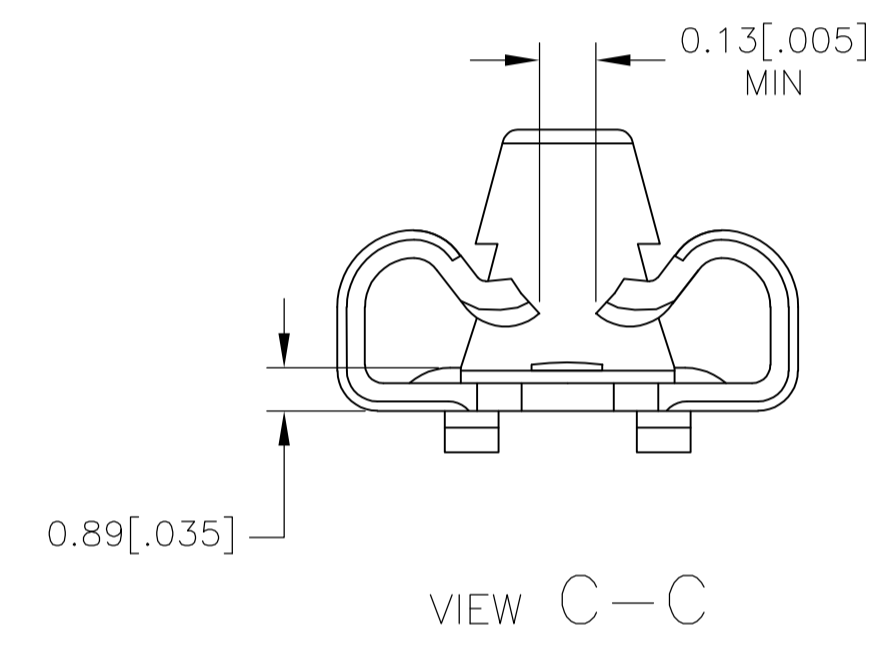
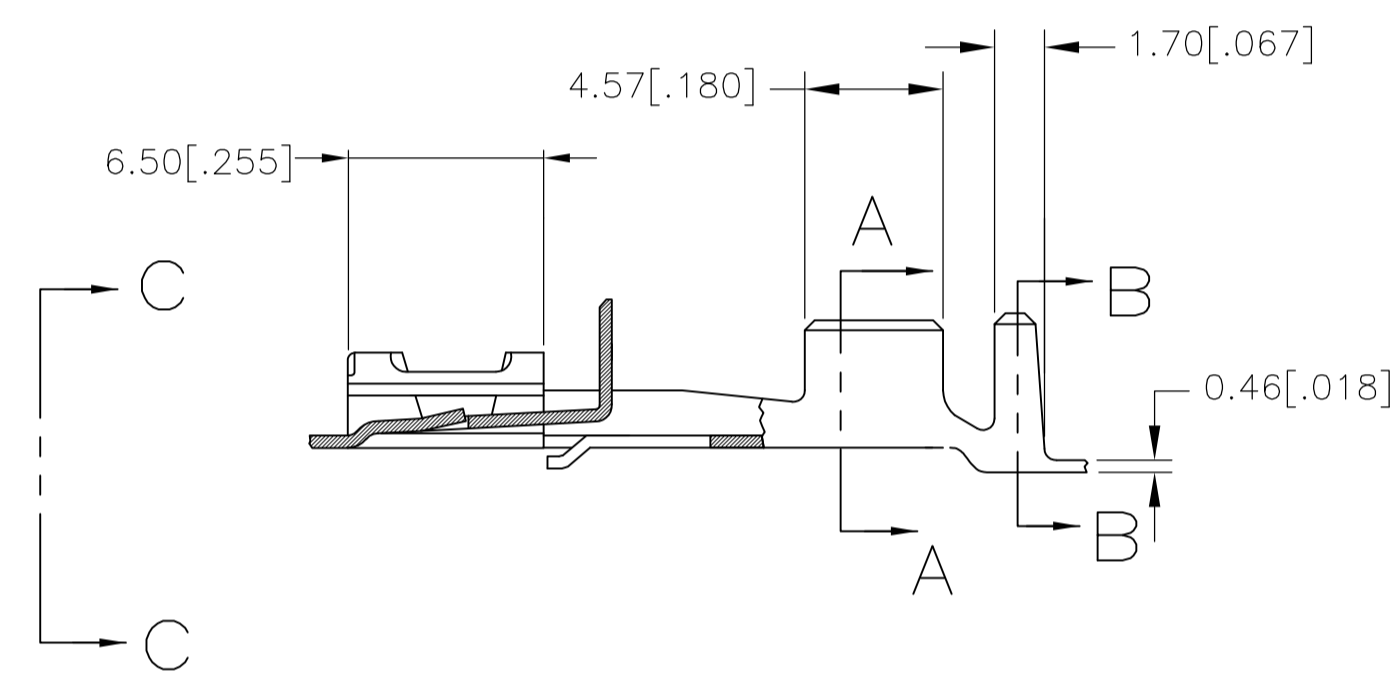
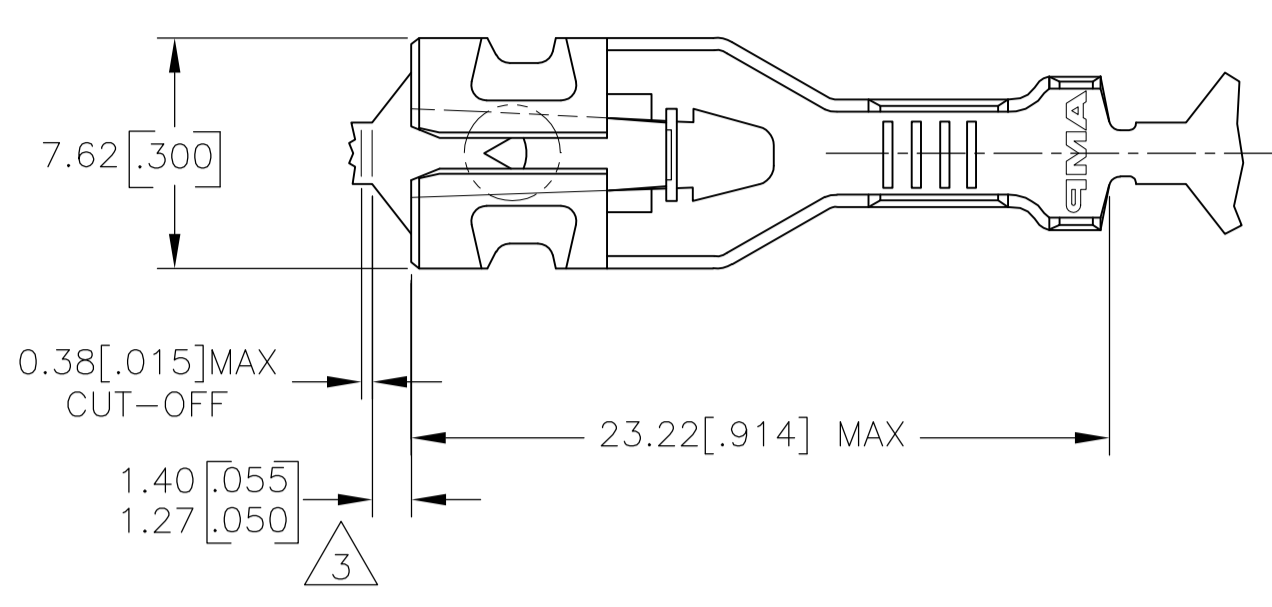


REVISIONS					
P	LTR	DESCRIPTION	DATE	DMN	APVD
A1		REVISED PER ECR-17-006852	23MAY2017	BW	MD

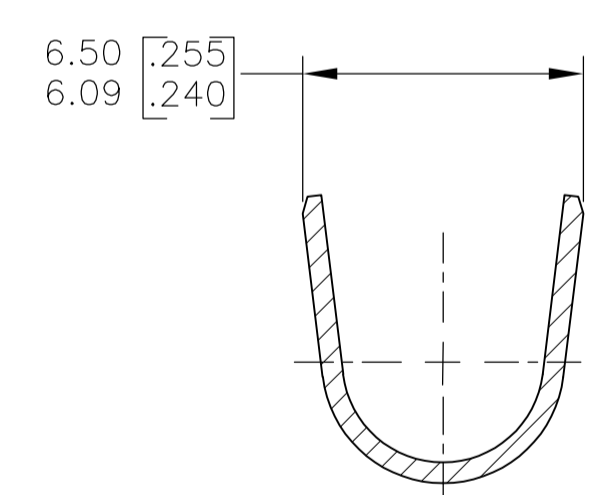
SUGGESTED MATING TAB



- MATL: 1/2 H BRASS OR NICKEL PL STEEL.
 - NO BURRS PERMISSIBLE AT HOLE.
 - MUST BE FLAT WITHIN 0.076 [.003] OVER THIS LENGTH.
 - TIN PLATING IS REQUIRED ON BRASS WHEN TERMINAL TEMP. IS OVER 225°F
 - HOLE MUST BE SYMMETRICAL ABOUT TAB Q_C WITHIN 0.076 [.003]
- * TO BE USED ONLY WHEN SHOULDER IS ELIMINATED.



SECTION A-A
SCALE 6:1



SECTION B-B
SCALE 6:1

- DIMENSIONS IN BRACKETS ARE IN INCHES.
 - CONTINUOUS STRIP ON REELS.
- 3 THE 1.40 [.055] DIMENSION MUST BE MAINTAINED BY THE APPLICATOR CUT-OFF TO ENSURE THE PROPER LOCKING FUNCTION OF THE RECEPTACLE.

3.81-5.08 [.150-.200] DIA	#12-#10 AWG	2825084-1
INSULATION RANGE	WIRE SIZE	PART NUMBER

THIS DRAWING IS A CONTROLLED DOCUMENT.		DIN BASVESH WARAD 15APR2016		STE TE Connectivity	
DIMENSIONS: mm[INCHES]		CIRK MIKE DIDONATO 15APR2016		NAME	
TOLERANCES UNLESS OTHERWISE SPECIFIED:		APVD MIKE DIDONATO 15APR2016		PRODUCT SPEC	
0 PLC ± -		APPLICATION SPEC		108-143022	
1 PLC ± -		WEIGHT		0	
2 PLC ± -		MATERIAL		-	
3 PLC ± 0.25[.010]		FINISH		-	
4 PLC ± ± 1°		CUSTOMER DRAWING		SCALE 4:1 SHEET 1 OF 1 REV A1	
ANGLES		SIZE		A1 00779 C=2825084	