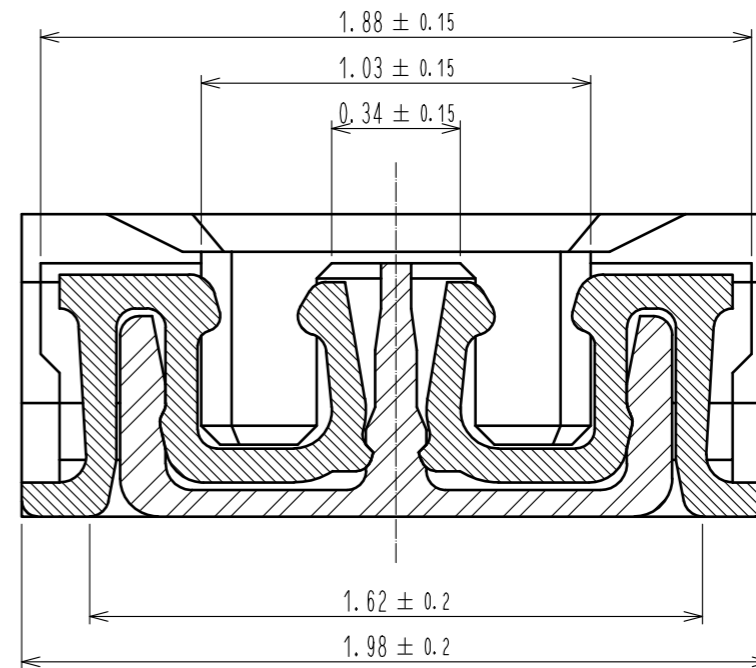
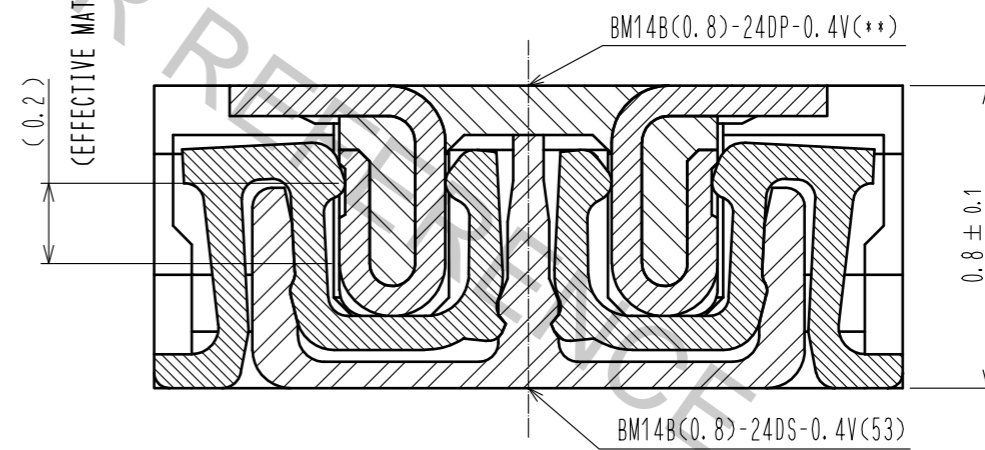


A-A (50:1)



ENGAGEMENT FIGURE (50:1)



NOTE) 1. ALL LEAD CO-PLANARITY SHALL BE 0.08mm MAX

2. CONTACT PLATING SPECIFICATIONS.

CONTACT AREA : GOLD 0.05 μ m MIN

SMT LEAD : GOLD 0.05 μ m MIN

UNDERPLATING : NICKEL 1 μ m MIN

(SURFACE : SEALING)

3. EACH CONTACTS AT 4 CORNERS ARE PROVIDED FOR METAL FITTINGS AND GROUNDING PURPOSE.

4. HRS MARK AND CAV NO. ARE INDICATED IN APPROX POSITION SHOWN.

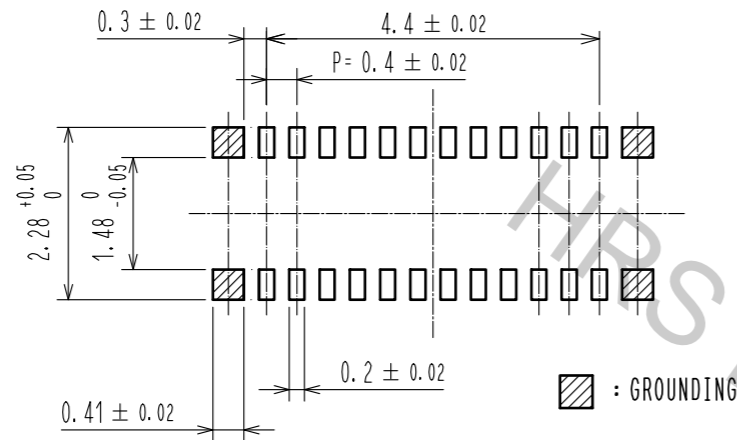
5. GATE POSITION IS INDICATED IN APPROX POSITION SHOWN.

NO.	MATERIAL	FINISH . REMARKS	NO.	MATERIAL	FINISH . REMARKS
3	PS	CLEAR (ENBOSSED CARRIER TAPE)	6	PS	CLEAR (REINFORCEMENT COLLAR)
2	PHOSPHOR BRONZE	2	5	PS	BLACK (PLASTIC REEL)
1	LCP	UL94 V-0, BLACK	4	POLYESTER	CLEAR (COVER TAPE)

UNITS	SCALE	COUNT	DESCRIPTION OF REVISIONS	DESIGNED	CHECKED	DATE
mm	10:1	1				
APPROVED : MO. ISHIDA			17.01.19	DRAWING NO. EDC-319840-53-00		
CHECKED : TS. MIYAZAKI			17.01.19	PART NO. BM14B(0.8)-24DS-0.4V(53)		
DESIGNED : NY. YAMASHIRO			17.01.19	CODE NO. CL684-8005-0-53		
DRAWN : SN. NUMAZAKI			17.01.18	1/3		

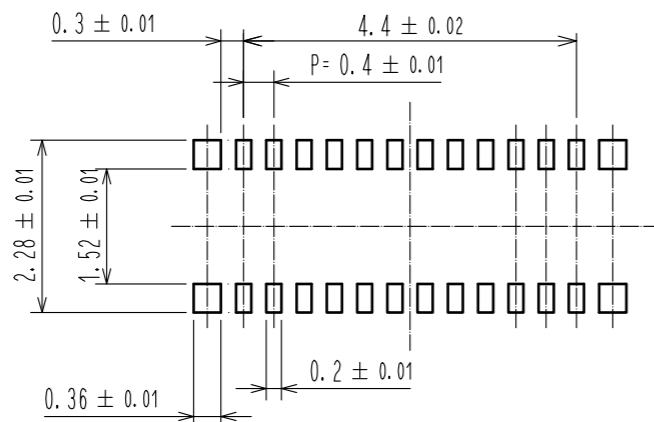
Oct.1.2018 Copyright 2018 HIROSE ELECTRIC CO., LTD. All Rights Reserved.
 In case that the application demands a high level of reliability, such as automotive,
 please contact a company representative for further information.

◆ RECOMMENDED PCB LAYOUT

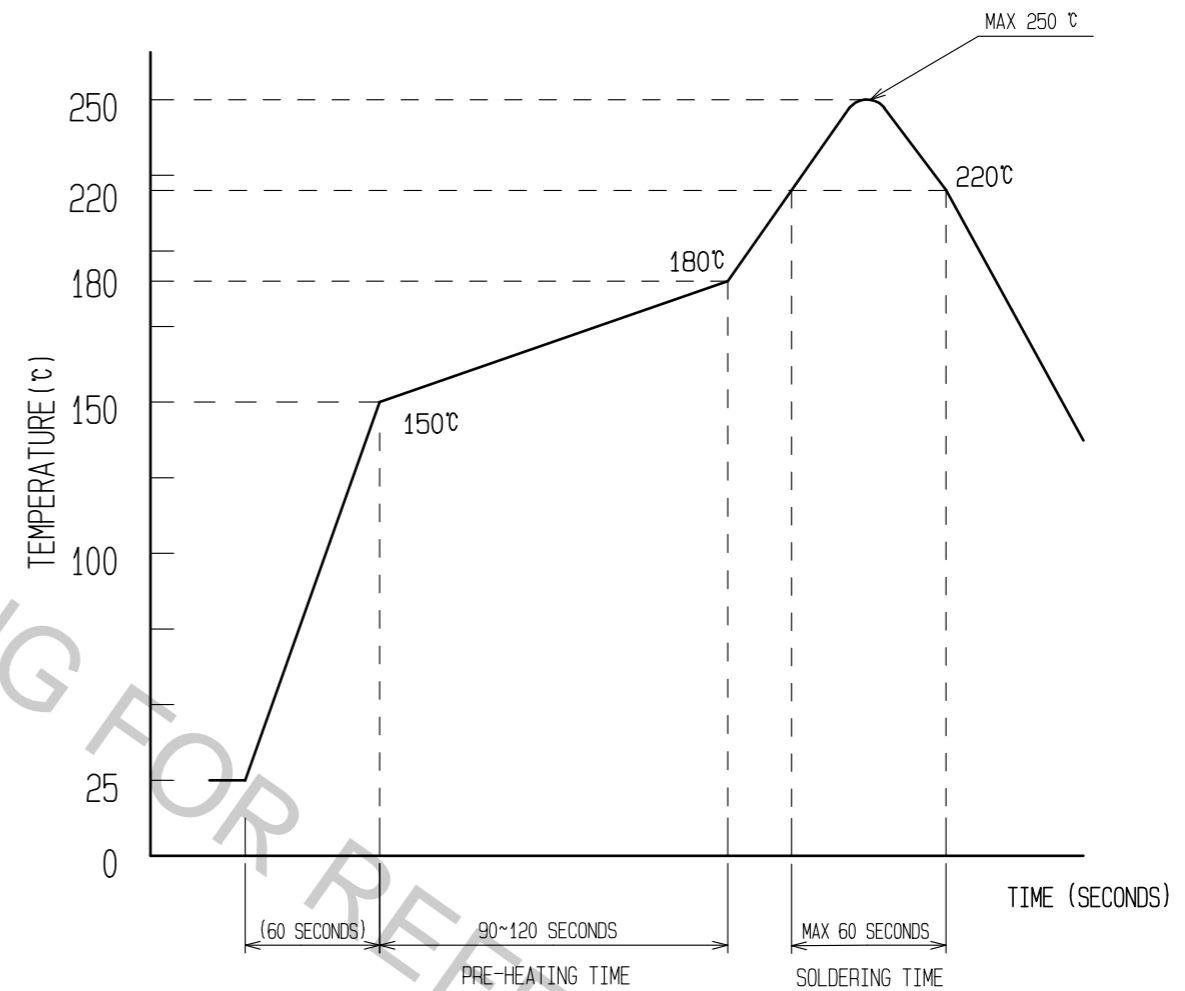


◆ RECOMMENDED METAL MASK DIMENSIONS

METAL MASK THICKNESS : 100 μm



6 RECOMMENDED REFLOW TEMPERATURE PROFILE USING LEAD-FREE SOLDER PASTE.



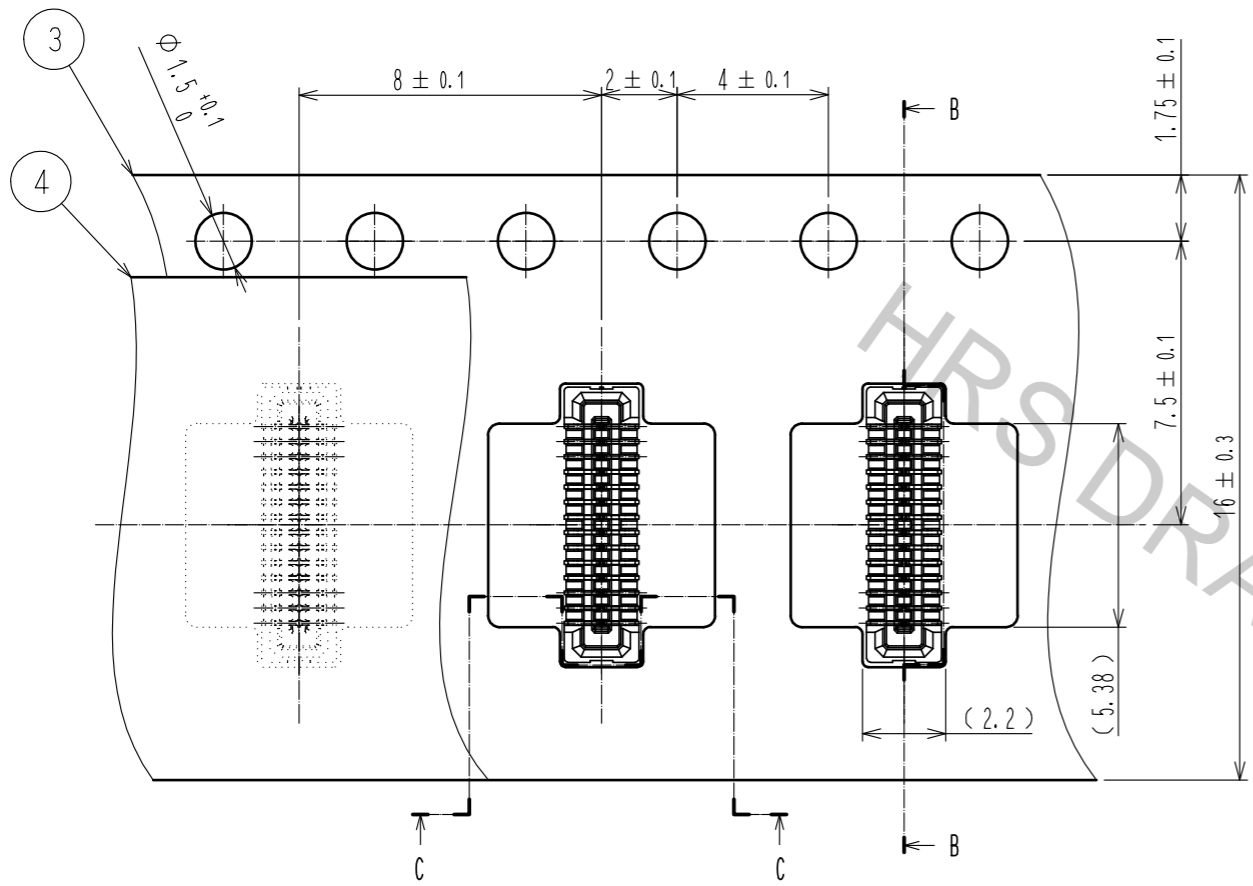
- REFLOW METHOD: IR REFLOW.
 NUMBER OF REFLOW CYCLES: 2 CYCLES MAX.
 1) REFLOW TIME
 DURATION ABOVE 220°C, 60 SEC. MAX.
 (PEAK TEMPERATURE: 250°C MAX)
 2) PRE-HEAT TIME
 PRE-HEAT TEMPERATURE(MIN): 150°C
 PRE-HEAT TEMPERATURE(MAX): 180°C
 PRE-HEAT TIME: 90-120 sec.

6 THIS TEMPERATURE PROFILE IS PER THE CONDITIONS SHOWN ABOVE.
 ADDITIONAL FACTORS, SUCH AS SOLDER PASTE TYPE, PCB SIZE AND
 OTHER MOUNTED COMPONENTS COULD AFFECT THE PROFILE, THEREFORE,
 A THOROUGH EVALUATION OF MOUNTING CONDITION IS REQUIRED
 PRIOR TO PRODUCTION. TEMPERATURE IS MEASURED AT CONTACT LEAD.

HRS	DRAWING NO.	EDC-319840-53-00
	PART NO.	BM14B(0.8)-24DS-0.4V(53)
	CODE NO.	CL684-8005-0-53

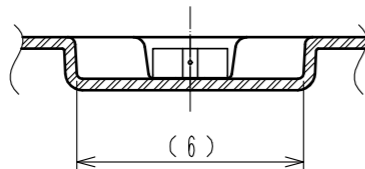
2/3

EMBOSED CARRIER TAPE PACKAGING (5:1)

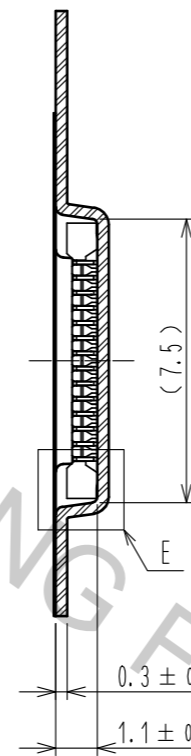


DIRECTION OF UNREELING

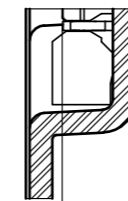
C-C (5:1)



B-B (5:1)

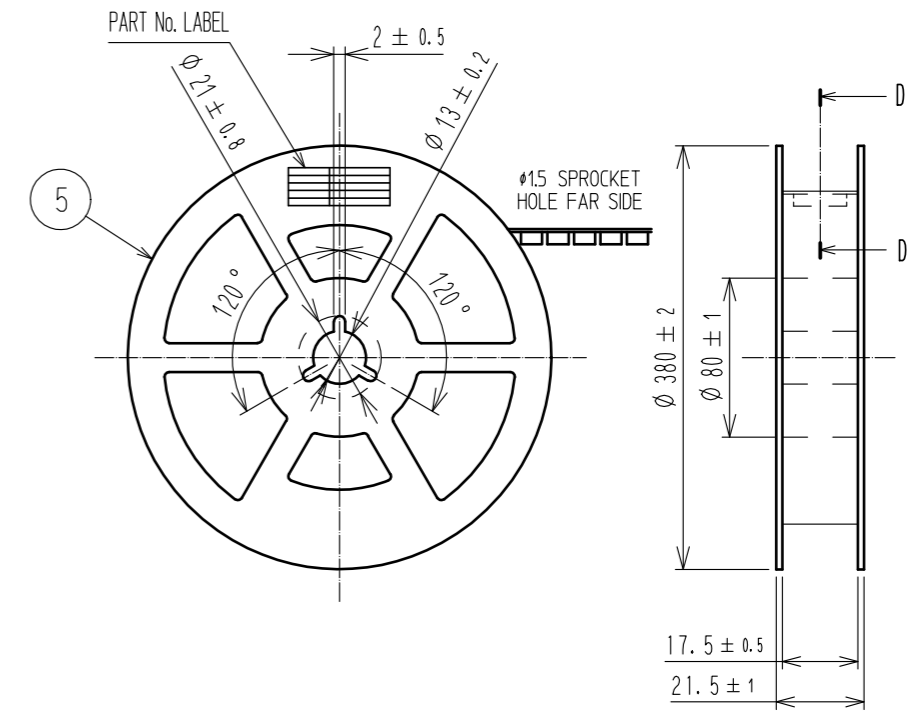


E(10:1)



PICK UP AREA : (0.13)

STYLE AND DIMENTION OF REEL (FREE)

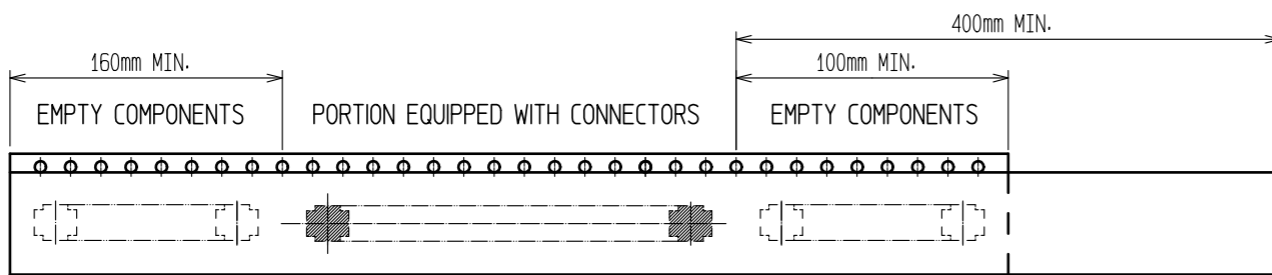
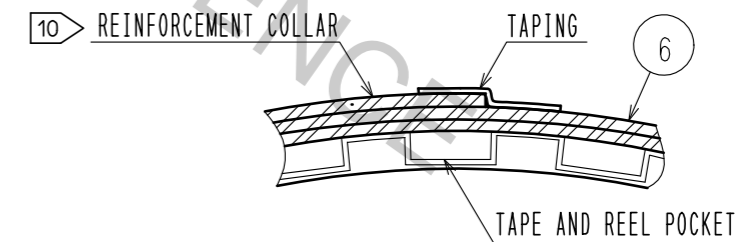


DETAIL OF PART No. LABEL

製造年月日	** ** *
製品コード	CL684-8005-0-53
製品名	BM14B(0.8)-24DS-0.4V(53)
数量	1,000
納入者	ヒロセ電機(株)

DATE OF MANUFACTURED
 CODE No.
 PART No.
 QUANTITY
 SUPPLIER

D-D (FREE)



TRAILER

9 TAPING (FREE)

LEADER

- 7. PER REEL 1000 CONNECTORS.
- 8. THE DIMENSIONS IN PARENTHESES ARE FOR REFERENCE.
- 9 REFER TO JIS C 0806(PACKAGING OF COMPONENTS FOR AUTOMATIC HANDLING)
- 10 AFTER PACKAGING, ROLL 2 METERS OF THE REINFORCEMENT COLLAR TO OUTER CIRCUMFERENCE OF TAPE AND REEL POCKET, AND TAPE DOWN AT THE END THE COLLAR.

HRS	DRAWING NO.	EDC-319840-53-00
	PART NO.	BM14B(0.8)-24DS-0.4V(53)
	CODE NO.	CL684-8005-0-53