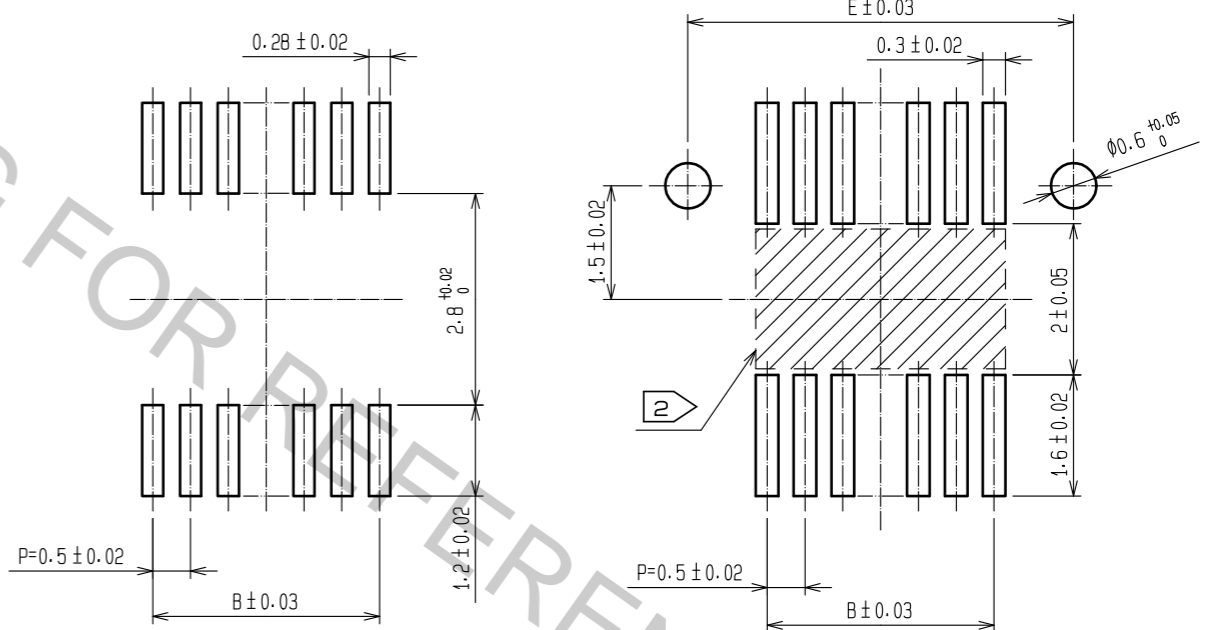


△	CODE No.	CONTACT	A	B	C	D	E	F
	CL537-0453-2-81	20	7.2	4.5	5.3	5.7	6.6	5.3
	CL537-0455-8-81	30	9.7	7.0	7.8	8.2	9.1	7.8
	CL537-0456-0-81	36	11.2	8.5	9.3	9.7	10.6	9.3
	CL537-0457-3-81	40	12.2	9.5	10.3	10.7	11.6	10.3
	CL537-0459-9-81	50	14.7	12.0	12.8	13.2	14.1	12.8
	CL537-0461-0-81	60	17.2	14.5	15.3	15.7	16.6	15.3

RECOMMEND METAL MASK PATTERN (10:1)

RECOMMENDED LAND PATTERN (10:1)



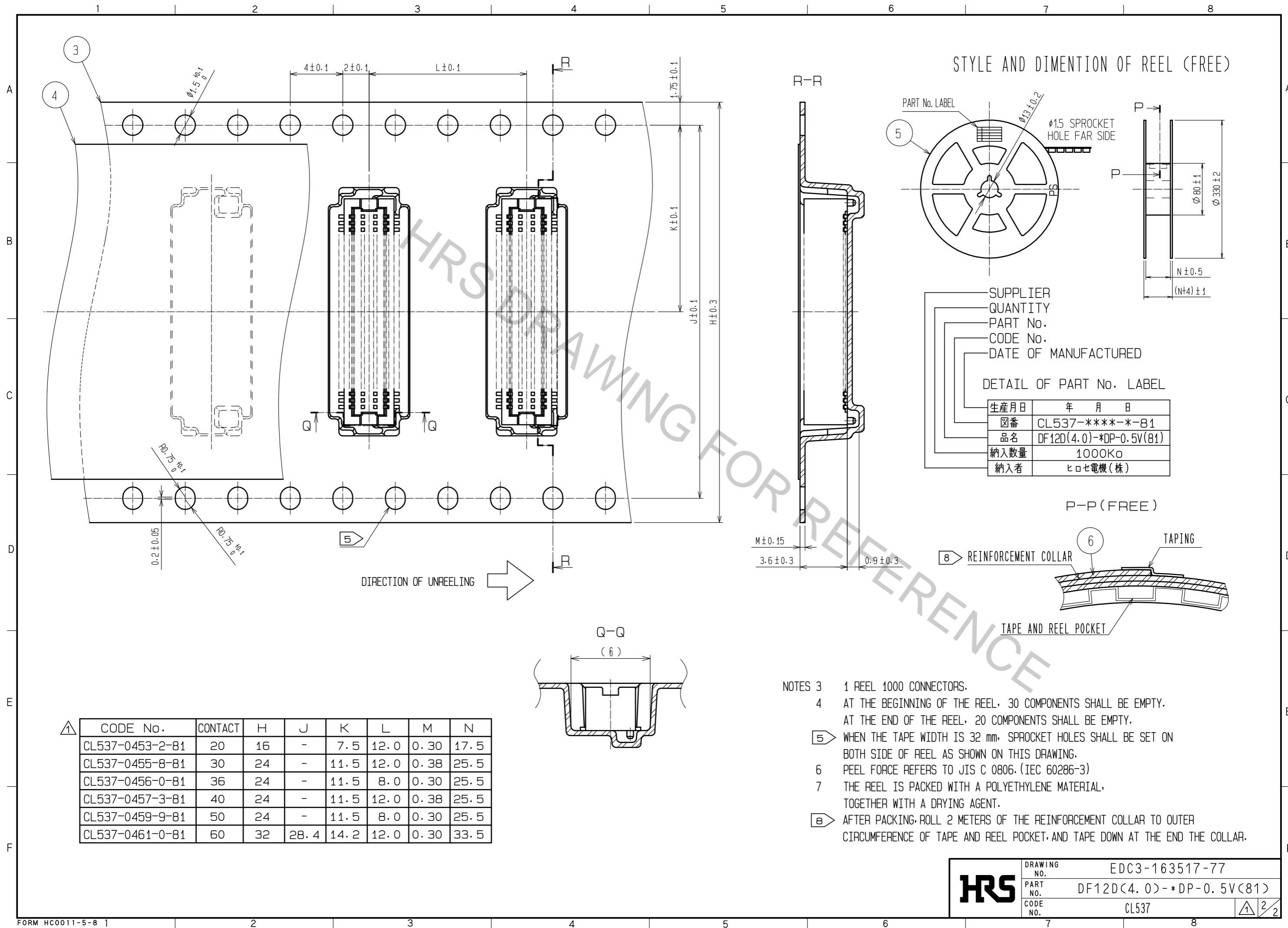
RECOMMENDED THICKNESS OF METAL MASK : 120 μm

RECOMMENDED THICKNESS OF SOLDER PASTE : 120 μm

NOTES 1 LEAD CO-PLANARITY SHALL BE 0.08 mm MAX.
 2 IF THERE IS PATTERN ON PART, THERE IS A POSSIBILITY THAT IT WILL MAKE CONTACT WITH THE LEADS.

2	PHOSPHOR BRONZE	CONTACT AREA:GOLD PLATED 0.2μm min	6	PS	CLEAR (REINFORCEMENT COLLAR)		
		LEAD AREA:GOLD PLATED 0.015μm min	5	PS	BLACK (PLASTIC REEL)		
		OTHERS(UNDER PLATING):NICKEL PLATED 2μm min	4	POLYESTER	CLEAR (COVER TAPE)		
1	POLYAMIDE	UL94V-0-NATURAL(BEIGE)	3	PS	CLEAR (EMBOSSED CARRIER TAPE)		
NO.	MATERIAL	FINISH . REMARKS	NO.	MATERIAL	FINISH . REMARKS		
UNITS mm		SCALE 5 : 1	COUNT 2	DESCRIPTION OF REVISIONS DIS-H-00002752	DESIGNED SH. HOSODA	CHECKED TS. MIYAZAKI	DATE 17. 10. 10
HRS HIROSE ELECTRIC CO., LTD.		APPROVED : KH. IKEDA	13. 08. 19	DRAWING NO. EDC3-163517-77			
		CHECED : YH. MICHIDA	13. 08. 09	PART NO. DF12D(4.0)-*DP-0.5V(81)			
		DESIGNED : YN. SAKAMOTO	13. 08. 08	CODE NO. CL537			
		DRAWN : KR. AJITO	13. 08. 08				

Oct.1.2018 Copyright 2018 HIROSE ELECTRIC CO., LTD. All Rights Reserved.
 In case that the application demands a high level of reliability, such as automotive,
 please contact a company representative for further information.



HRS	DRAWING NO.	EDC3-163517-77
	PART NO.	DF12D(4.0)-*DP-0.5V(81)
	CODE NO.	CL537
		2/2