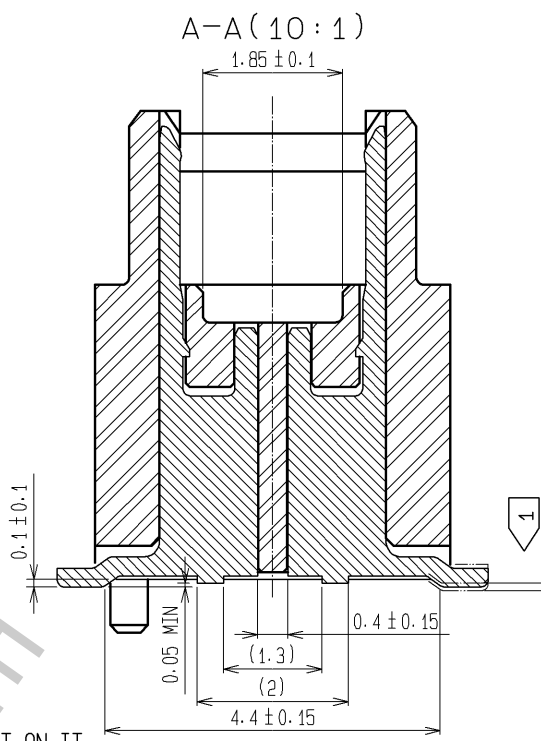
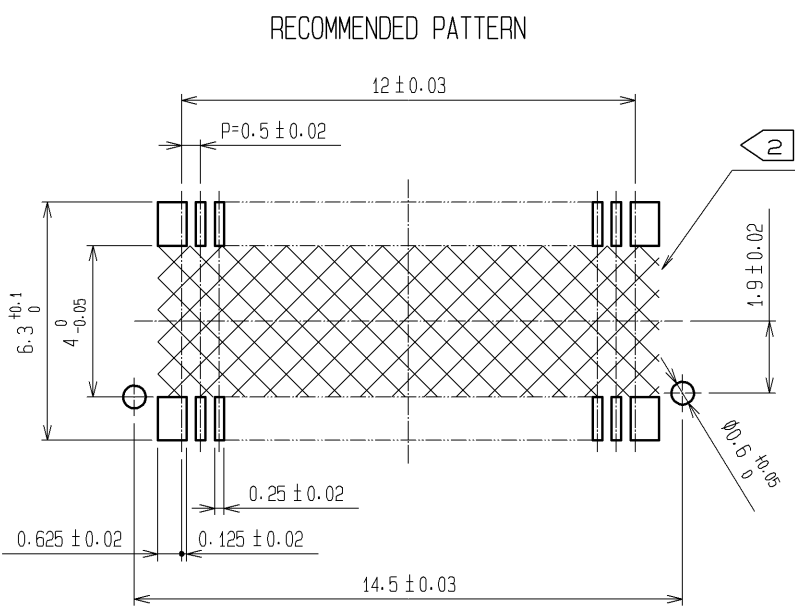
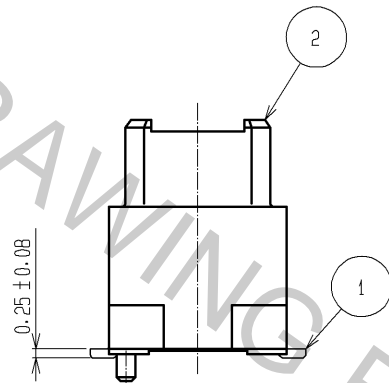
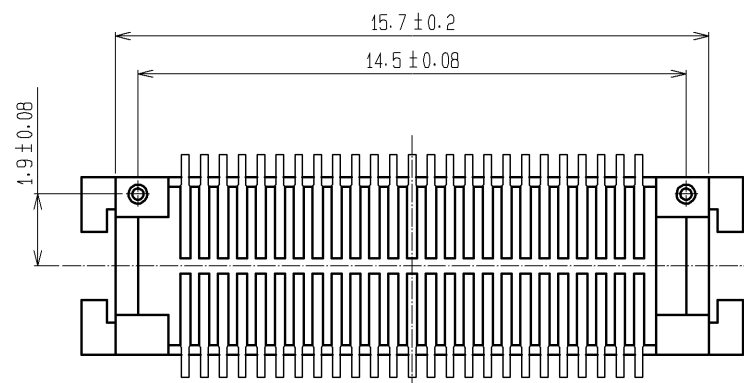
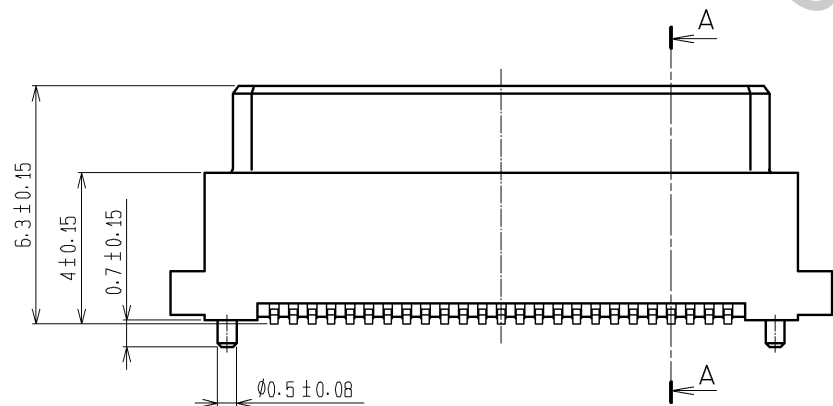
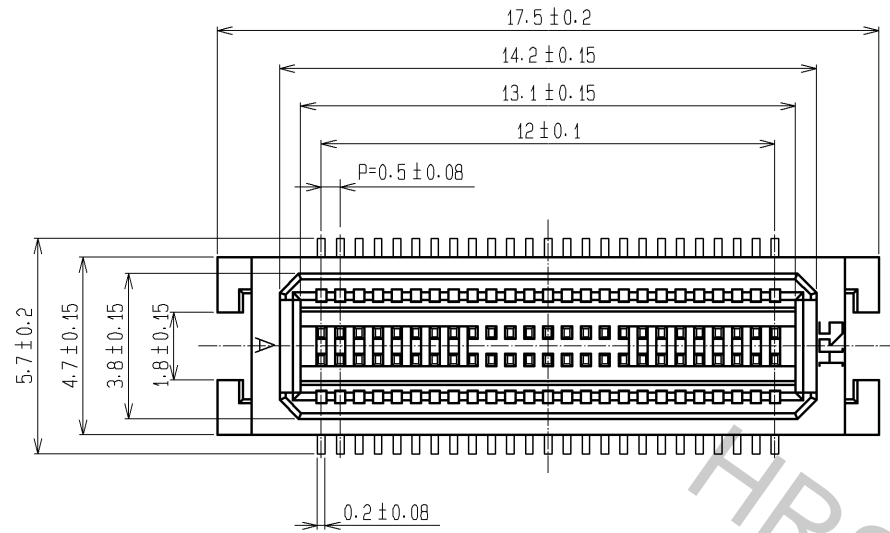
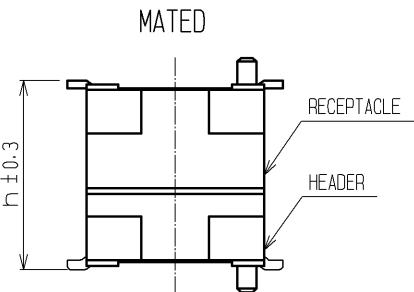


Oct.1.2018 Copyright 2018 HIROSE ELECTRIC CO., LTD. All Rights Reserved.
In case that the application demands a high level of reliability, such as automotive,
please contact a company representative for further information.



NOTES 1> LEAD CO-PLANARITY INCLUDE REINFORCED METAL FITTINGS SHALL BE 0.1 mm MAX.
2> WHEN A PART MARKED WITH HAS A PATTERN BUT NO RESIST ON IT. TAKE CARE TO PREVENT THE CONNECTOR FROM TOUCHING IT.

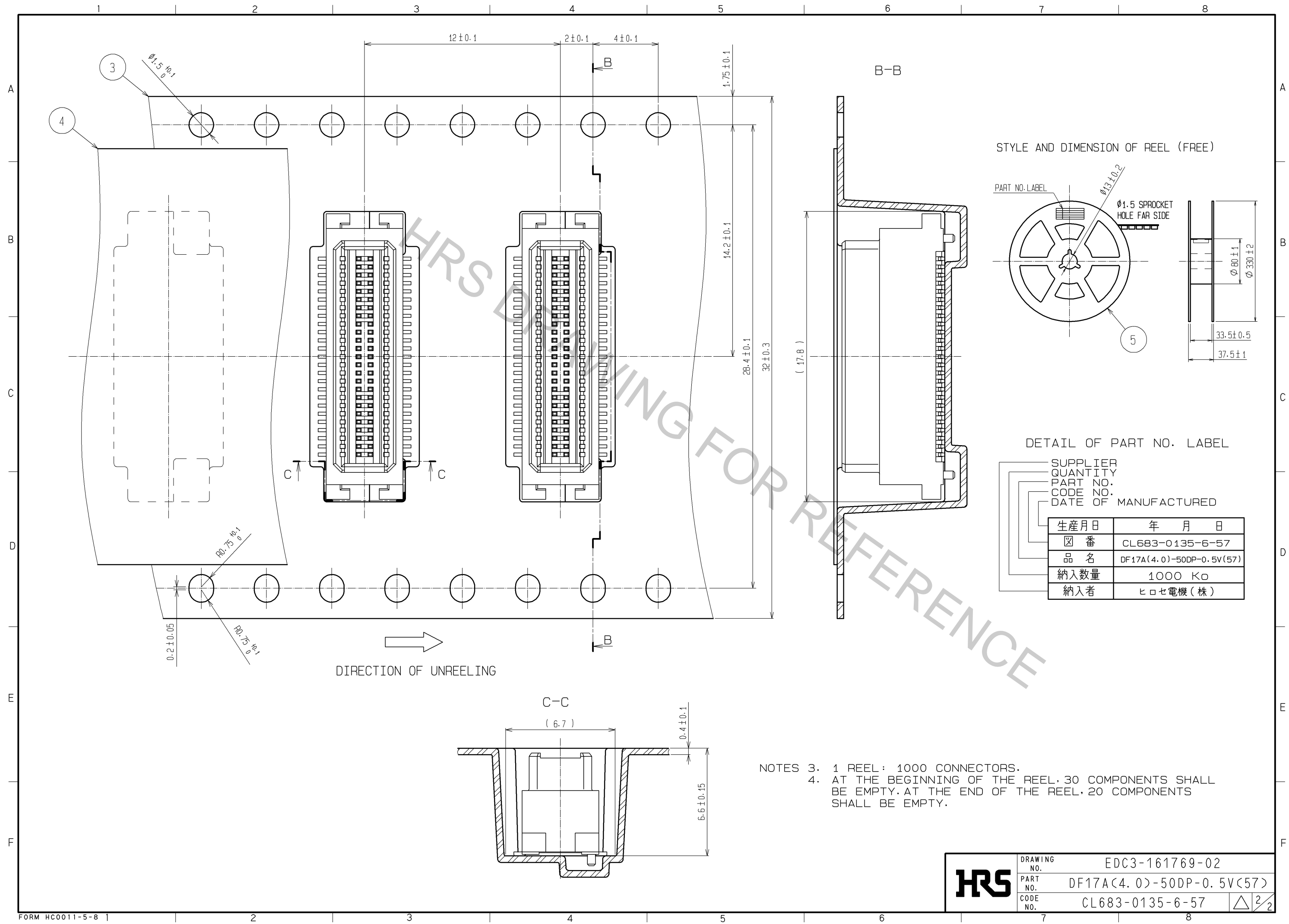
MATED HIGHT (h)		(mm)	
HEADER NO.	RECEPTACLE NO.	DF17*(3.0)-50DS-0.5V(57)	DF17*(4.0)-50DS-0.5V(57)
DF17A(4.0)-50DP-0.5V(57)	7	7	8



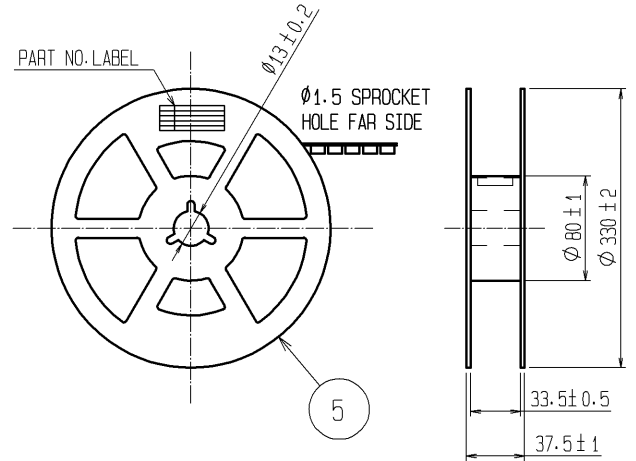
1	PHOSPHOR BRONZE	CONTACT AREA:GOLD PLATED 0.1µm min LEAD AREA:TIN PLATED 1µm min UNDER PLATING:NICKEL PLATED 1µm min	5	PS	PLASTIC REEL・BLACK
			4	POLYESTER	CLEAR (COVER TAPE)
			3	A-PET	CLEAR (EMBOSSED CARRIER TAPE)
			2	POLYAMIDE (PA6T)	NATURAL (BEIGE)・UL94V-0
NO.	MATERIAL	FINISH・REMARKS	NO.	MATERIAL	FINISH・REMARKS
UNITS mm		SCALE 5:1	COUNT		DESCRIPTION OF REVISIONS
DESIGNED		CHECKED		DATE	
APPROVED : KH. IKEDA		08.09.25		DRAWING NO. EDC3-161769-02	
CHECED : TS. MIYAZAKI		08.09.25		PART NO. DF17A(4.0)-50DP-0.5V(57)	
DESIGNED : TY. YAMASAKI		08.09.03		CODE NO. CL683-0135-6-57	
DRAWN : TY. YAMASAKI		08.09.03		1/2	

HRS HIROSE ELECTRIC CO., LTD.

Oct.1.2018 Copyright 2018 HIROSE ELECTRIC CO., LTD. All Rights Reserved.
In case that the application demands a high level of reliability, such as automotive,
please contact a company representative for further information.



STYLE AND DIMENSION OF REEL (FREE)



DETAIL OF PART NO. LABEL

SUPPLIER	生産月日	年	月	日
QUANTITY	図番	CL683-0135-6-57		
PART NO.	品名	DF17A(4.0)-50DP-0.5V(57)		
CODE NO.	納入数量	1000 K0		
DATE OF MANUFACTURED	納入者	ヒロセ電機(株)		

NOTES 3. 1 REEL: 1000 CONNECTORS.
4. AT THE BEGINNING OF THE REEL, 30 COMPONENTS SHALL BE EMPTY. AT THE END OF THE REEL, 20 COMPONENTS SHALL BE EMPTY.

DRAWING NO.	EDC3-161769-02
PART NO.	DF17A(4.0)-50DP-0.5V(57)
CODE NO.	CL683-0135-6-57